



SACRE NEWSLETTER

(Edition 19) Spring 2025

Contents

Page 1

[RE Self Evaluation Survey 24 - Thank You](#)
[SACRE FAQ's](#)

Page 2

[Virtual Tour – Park Primary School, Colne](#)
[FREE RE Network Meetings](#)

Page 3

[SACRE Spotlight—Keith Pennington](#)
[Training for staff new to role of Subject leads](#)

Page 4

[Hinduism Workshops with by Aruna Patel](#)

Page 5

[Understanding Humanism](#)
[Understanding Muslims, Understanding Islam](#)
[New Features on the RE Hubs Website](#)

Page 6

[RE Chat UK](#)
[Religious Festivals 2025](#)
[Spirited Arts Competition 2025](#)

Page 7

[Want to challenge your more able pupils in RE?](#)
[Discover Sikhism & Punjabi Heritage w/shop](#)

Page 8

[New Resource: Introducing Religion & Worldviews](#)
[North West SACRE Hub Pupil Voice Event](#)

Page 9

[RE Inspirations for Secondary schools – A Professional Development opportunity](#)

Page 10

[Our Associate RE Consultants](#)
[Needing help with anything RE?](#)

Page 11

[Lancashire Directory of Visits & Visitors](#)
[School Portal—Did you know?](#)
[Lancashire Agreed Syllabus 2026](#)

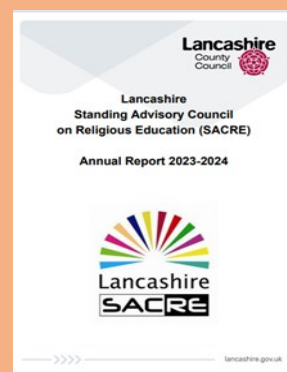
Page 12

[LPDS/RE Website Information](#)

THANK YOU

Lancashire SACRE would like to thank every school who responded to their annual RE survey. More schools responded this year than any other year. The data gathered is invaluable and informs the writing of new resources and the content of future training. A brief analysis can be found in the SACRE annual report for 2023-2024 which is available to download from the RE website.

Here is the link to the RE Website where you can read the report
[lancashire-sacre-annual-report-2023-2024.pdf](#)



FAQ's

The Lancashire SACRE team have created a FAQ area on the new RE website with the intention of enabling schools to find answers to some of the more commonly asked questions.

[FAQ's - The Lancashire Agreed Syllabus for Religious Education - LPDS Resources](#)

You need to have a LPDS account, to be able to see these, see [page 12](#) on how to create one if you have not done so already.

Virtual Tour – Park Primary School, Colne

Virtual Tour – Park Primary School, Colne

Lancashire are so proud that the RE Hub for the north west chose to showcase provision in one of our east schools.



Please click this link to see the virtual tour and learn more about their RE curriculum.

[RE Hubs with Park Primary Virtual Tour](#)

FREE RE NETWORK MEETINGS

Our **FREE** network meetings can be booked via the LPDS website [Details - Lancashire Professional Development Service](#)

These sessions will focus on teaching RE through the disciplinary lens of philosophy.

All meetings run from 4.00pm—5.30pm

East: St Pauls CE Primary, Rawtenstall – **20 April 2025**

Central: Lea Comm Primary School, Preston – **29 April 2025**

South: Westhead Latham St James, Ormskirk – **1 May 2025**

There will also be an additional online training session on 6 May 2025 for any teachers who are unable to join a face to face session.

Please book via LPDS, here:

[Details - Lancashire Professional Development Service](#)

The purpose of the meetings is to:

- Network and share ideas with other RE subject leads.
- Find answers to questions linked to the RE syllabus and assessment procedures
- Keep up to date with new developments in RE both locally and nationally.

SACRE SPOTLIGHT



Keith joined the SACRE team during COVID and as the Humanist representative speaks on behalf of those people who hold a non-religious worldview. He is also the Chair of Lancashire Humanists and a volunteer with Humanists UK.

His volunteer work leads him to be involved with the UCLan Chaplaincy team, Interfaith Dialogue across Lancashire and carrying out school talks about Humanism when requested by the relevant RE lead.

Keith lives in Longridge and after 40 years in the chemical industry is now retired. This gives him time to carry out the various volunteer roles and still have time to enjoy playing golf.

Originally raised in the Church of England, he became an atheist at the age of 13 and after about 40 years became aware of Humanism as a positive approach to life for those with no religious beliefs. During this time he spent many years as a Samaritan volunteer and feel that this contributed greatly to his approach to living.

Training for those who are new to Primary RE Subject Leadership

Training is available for those who are new to Primary RE Subject Leadership

Friday 20 June 2025 9.30-4.00pm at The Exchange, County Hall Preston

Course content:

To introduce the requirements of the Lancashire Agreed Syllabus

To provide guidance on how to audit, monitor and evaluate RE provision in your school.

To examine progression and assessment of RE skills and concepts.

To support staff with planning and resources.

To explore creative approaches to the teaching of RE with examples of good practice.

This course is suitable for those who are new to subject leadership in RE or those wish to further develop their current role.

Please book via LPDS. [Details - Lancashire Professional Development Service](#)

Hinduism Workshops delivered by Aruna Patel



Learn About Sanatana Dharma....

Aruna is an experienced primary teacher, accredited speaker for the RE Hub and vice-chair of Lancashire SACRE.

Offering school-based workshops on Hinduism, she aims to share her beliefs and understanding of Sanatana Dharma in a way that makes sense in the western world.

Phone: 07914 464548

E-mail: [sanatanadharmabritishhindus@gmail.com](mailto:sananadharmabritishhindus@gmail.com)

These charges include preparation and planning time and all bespoke resources created.

Mornings: £166.95

Afternoons: £111.30

Full day: £278.25



Shap Audio Glossary

Not sure of religious vocabulary? Need a simple, clear explanation for what a word means? This Shap audio glossary reads the words to you, explains what they mean and tells you which religion and worldview they belong to. Really helpful! See the link

www.shapcalendar.org.uk/glossary.html

If this does not work for you, try another browser.

Understanding Humanism

Understanding Humanism is a great resource to support teachers in exploring non-religious worldviews.

You can book a free, trained visitor (such as Keith) to share their life experience and access a wealth of teacher resources. For more information can be found here

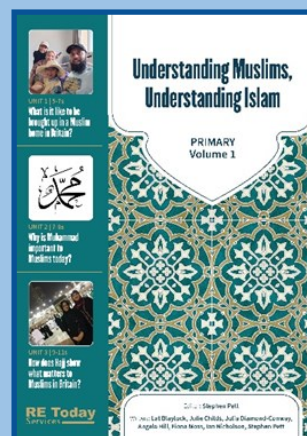
[Understanding Humanism](#)



Understanding Muslims, Understanding Islam

[Understanding Muslims Understanding Islam series](#)

This new resource explores lived Islam using the voices of contemporary Muslims in Britain and beyond. It applies different disciplinary tools in line with a religions and worldviews approach.



New Features on the RE Hubs Website

In the [Access Classroom Resources](#) section (in Resourcing RE or Upkill), there is a new section called [Films in RE](#). This contains a range of filmed based resources from national organisations such as the Faith and Belief Forum, True Tube, Understanding Humanism and BBC.

It also includes resources from the North West and other regions developed as part of projects such as the Pennine Learning films and the Cumbria Virtual Voices in RE Project.

If you have any suggestions for additional film based resources to add, please contact Jane Yates, northwest@re-hubs.com

REChatUK

NATRE's monthly X (formally Twitter) forum, #REChatUK takes place on the first Monday of the month, from 8pm—9pm. These fast-paced, fun and informative discussions are a great way to discover new ideas, resources and conversations.

The forum is also an effective place to network and meet new people on X Follow [@NATREupdate](#) on X and the hashtag #REChatUK.



Spirited Arts Competition 2025

Get creative through this cross-curricular competition!

Join hundreds of schools worldwide participating in this year's Spirited Arts competition! We welcome entries in (almost!) any art form your pupils can think of.

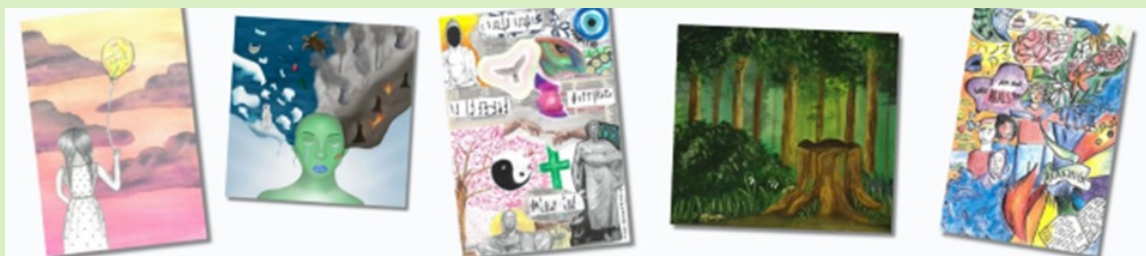
The competition runs from the beginning of the school year to 31 July 2025.

Themes for 2025 are designed to stimulate deep thinking and artistic expression. Choose from:

- Living in a Diverse World -Stories that Change Lives -Thinking about God - Sacred Places**
- All God's Creatures -Making sense of Life.**

For further details please click here:

[Enter Spirited Arts | NATRE Competition](#)



Wanting to challenge your more able pupils in Religious Education?

NATRE has been working in partnership with **NACE (National Association for Able Children in Education)** to develop a suite of resources designed to support teachers in delivering high-quality Religious Education (RE) to able pupils.

These carefully curated resources include lesson ideas, teacher reflections, and blog posts, offering practical guidance and inspiration for both **primary and secondary RE teachers**. The aim is to enhance classroom practice and ensure that able pupils are effectively challenged and engaged in their learning.

They are pleased to offer these resources **free of charge**. Please head to our website for more information on how to access: [Access to NACE resources](#)

Religious studies

Resources specially created for the NACE community by NATRE

- Ideas for challenge in RE
- Pilgrimage discussion activity
- RE activities to challenge children in Reception
- Identify a child as more able in the RE classroom



Discover Sikhism & Punjabi Heritage Workshop

Join Harry for this interactive Sikhism & Punjabi Heritage Workshop

- ✓ Explore Sikh artefacts
- ✓ Turban-tying experience
- ✓ Try on Punjabi cultural clothing
- ✓ Play the Punjabi Dhol (drum)
- ✓ Learn and perform traditional Bhangra dance



We also offer guided visits to our Sikh Gurdwara in Preston, providing students with an opportunity to experience Sikh worship and community values firsthand.

<https://www.facebook.com/DiscoverSikhismLancashire>

<https://www.instagram.com/discover.sikhism.lancashire/>

Contact Harry Singh directly on **07393 686409**

New Resource: Introducing Religion and Worldviews



Adopting a Religion & Worldviews approach in Religious Education

New Resource: Introducing Religion and Worldviews

The University of Nottingham have created a series of (free) training resources (co-created with teachers) for those who want to support colleagues and help adopt a Religion & Worldviews approach in school. The packs have been designed to be delivered in schools by teachers, for teachers. The resources introduce trainers and their colleagues to the 'Religion and Worldviews' approach, focusing on what that might look like in the religious education classroom at primary and secondary levels, and build on a series of videos previously produced.

You can explore all the materials here:

[Introducing Religion and Worldviews - The University of Nottingham](#)

North West SACRE Hub Pupil Voice Event

Pairs of Y10 pupils from ten schools, representing five SACREs across the North West, joined together for a special online RE event in December. Initiated by the North West SACRE Hub, the event was set up by North West RE Hubs Lead, Jane Yates.

The event began with input about the AREIAC Young Ambassadors for RE Project and the project focus on Freedom of Religion or Belief (FoRB). This was followed by Dr Heather Marshall, Senior Lecturer and PGCE RE Course Leader at Edge Hill University, who made a presentation about the importance of RE. Trainee RE teachers from Edge Hill University then facilitated break out discussion groups through a series of prepared questions about current issues in RE. To conclude, the RE Ambassadors from The Queen Katherine School in Kendal made a presentation about how they are championing RE in five key areas: a Y5 Open Evening Langar, Primary liaison, Philocoffee sessions, involvement in a UK Parliament Week Interfaith Discussion and the role they are playing to promote GCSE RS to Year 9s. You can read more about their activities [here](#).

More information about the event can be found here [Introducing Religion and Worldviews - The University of Nottingham](#)

RE Inspirations for Secondary schools

Secondary teachers of RE don't find it easy to get professional development. This day course is designed to help.

I invite you to join us at St Michael's High School, Chorley, on Thursday June 5th, the link to book on is here <https://forms.office.com/e/pTdeZ9urfe>

Please direct any questions to Lat Blaylock Lat@retoday.org.uk

RE Inspirations for Secondary Schools:

A one-day RE course led by RE Today consultant Lat Blaylock. Hosted at St Michael's CE High School, Chorley on 5th June 2025.

Cost: £100 per delegate. Reduction to £80 per place if two or more teachers book together, i.e. from the same school or the same MAT. Includes lunch and refreshments.

Venue: Saint Michael's Church of England High School, Astley Rd, Chorley PR7 1RS (Near M61 J8 and M6 J28)

Programme:

Arrivals from 8.30am for coffee and welcome

Session 1: 9-10.30: **Inspirational task setting for 11-16 RE**

6 exemplar practical KS3 activities that demonstrate how curricular RE can be a creative, mind-opening and transformative experience for 11-14s.

Session 2: 10.50-12.15 **RE: deep and meaningful? Responding to OFSTED's latest with vigour and practicality**

5 approaches to RE that take OFSTED's 'Deep and Meaningful?' RE report seriously, and provide excellent practical ways to respond in your RE department. Lat's presentation will also be informed by the latest and the newest version of SIAMS Section 48 inspection.

Session 3: 1-2.15 **Special Needs and RE: inclusion for all**

This session will focus on learning activity and appropriate aims for SEND+ pupils in RE, referring to the government's 'engagement model and applying its approaches to RE. Examples of adaptive learning in RE will be shared.

Session 4: 2.35 – 3.40 **Non religious worldviews – progression and diversity**

This session will use 6 activities for approaching non-religious worldviews which enable pupils to engage with diverse ways of being non-religious and show progress in understanding through challenging activities.

Our Associate RE Consultants

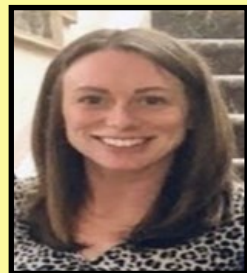
Helen Hall - My name is Helen Hall, I am currently Lead Practitioner at Lea Community Primary School in Preston. I have a degree in Religious Studies and love teaching RE in school. I have been working with the RE team for a number of years now and have thoroughly enjoyed taking my passion for the subject beyond my school and working with other professionals in the area to ensure that children receive a high-quality religious education.



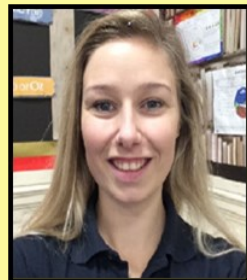
Michelle Smyth — I currently work as a Year 3/4 class teacher at Westhead Lathom St James and am responsible for RE. I have worked extensively across primary schools in Manchester and Stockport as an R.E. coordinator and I am passionate about the teaching of R.E creatively. I am excited to join the Lancashire R.E team and I look forward to supporting others, on their journey to delivering a great R.E curriculum for all their pupils.



Rebekah Fielding Hi! I'm Rebekah and I am part of the RE Advisory team. My Leadership roles have included Assistant Headteacher and Acting Headteacher. I am KS1 manager, SENDCo and RE Leader, with a degree in the subject. I currently lead the RE Hub for Manchester Diocese. These roles have equipped me with the knowledge and skills to support, encourage and enable RE Colleagues to teach high quality Religious Education, with an interesting, practical and creative approach for our children.



Natalie Goodman - I am currently the subject lead for RE and in Year 2 at Duke Street Primary School. I have been one of the Lancashire RE consultants since 2019 and absolutely love the role. I enjoy training others to create the best RE curriculums for their schools and supporting new RE subject leads as they learn what their role involves.



Needing Help with RE?

- Are you finding the Agreed Syllabus a challenge?
- Not sure how to assess in RE?
- Needing to increase subject knowledge of a specific religion?
- Wanting to raise the profile of RE in your school?
- Committed to developing the effectiveness of the subject leader for Religious Education?

Religious Education Consultant -
(REC) Enquiry Form



To enquire about RE support and/or to find out more about what we offer please click the link or use the QR code and someone will be in touch with you very soon.

<https://forms.office.com/e/p6qIcmVWzE>

Lancashire Agreed Syllabus 2026: Searching for Meaning.

Every 5 years it is a statutory duty for each Local Authority to review their RE syllabus. This review process is now underway in Lancashire and is a two year process. Further communications and training opportunities for all schools will be provided prior to launch in 2026. The review will build on the current syllabus and good practice in existence.



LCC School Portal

Did you know that the LCC Schools' Portal provides secure access to a number of online systems, including an electronic post system, traded services & a range of information aimed at supporting schools across Lancashire. We put lots of updates, newsletters, training opportunities, and other important RE/SACRE information on to the schools portal, these posts get addressed to the headteacher and to the RE Lead. If as an RE lead you are not getting these please check with your head and make sure that you are nominated as the RE Lead on the portal so that you get these important updates

[Schools' Portal \(lancsngfl.ac.uk\)](http://lancsngfl.ac.uk)



schools'portal

Lancashire SACRE Directory of Visits and Visitors

For schools wishing to independently arrange RE visits and visitors we are starting to compile contact details for a range of religions and worldviews. This is a work in progress however details for each religion can be found on a new tab added to the RE website. To supplement this, school speakers across the North West are also listed on the **RE Hubs.Uk** website.

Enriching the RE curriculum by building opportunities for pupils to encounter the diversity of living religious traditions in their area roots teaching in the disciplinary lens of human science. Good RE teaching ensures that pupils appreciate the diversity **within and between** religions and worldviews. For example, when talking to pupils this stresses the importance of saying, '**SOME** Christians believe' rather than 'Christians believe'.

Building Bridges continue to offer a Service Level Agreement to schools. They can create a bespoke package of enrichment by arranging tours of places of worship or asking vetted faith representatives to visit schools.

Please contact: Jessica Hind - 07375 841701 - interfaithbookings1@outlook.com

LPDS Website (Teaching & Learning)

The **LPDS Teaching and Learning Website** can be accessed here:

www.lancashire.gov.uk/lpds If you have a RE website subscription it is located here: [Religious Education - LPDS Resources \(lancashire.gov.uk\)](http://www.lancashire.gov.uk/religious-education)

In order to access all of the password protected materials that are available to your school in the **premium & exclusive areas** of the website that you or your school subscribes to, to book on o a course or order a publication you first need your own teacher account to be set up on the new LPDS website, the head has to do this in the first instance, they need to follow the guidance sent to them periodically since July 2022 via the portal & via email, help is also available on the website [Help - LPDS Resources \(lancashire.gov.uk\)](http://www.lancashire.gov.uk/help)

Account Set up order;

1. **Head** to set up an LPDS account for themselves using this link (if not already done so), it is suggested using the head@ email address [Register - Lancashire Professional Development Service](http://www.lancashire.gov.uk/register)
2. **Head to** email LPDS@lancashire.gov.uk & let them know which email address has been used to register, LPDS will then add the RE subscription on to your account.
3. **Head** to set up an LPDS account for all teachers
4. **Head** to then give teachers access to each subscription (SLA) as required, such as RE, Maths, Music, PE & English
5. **Teachers** to use forgotten password link to access materials

The help section on the website will answer any questions; [Help - Lancashire Professional Development Service](http://www.lancashire.gov.uk/help)

Please note that teachers cannot do stage 5 if the head has not already set up an account on their behalf.

If you need any **technical support** regarding logging on **after** your head has set you up with an account then please contact lpds@lancashire.gov.uk

For other queries such as website content please do not hesitate to contact us on 01257 516166 or advisory.support@lancashire.gov.uk

