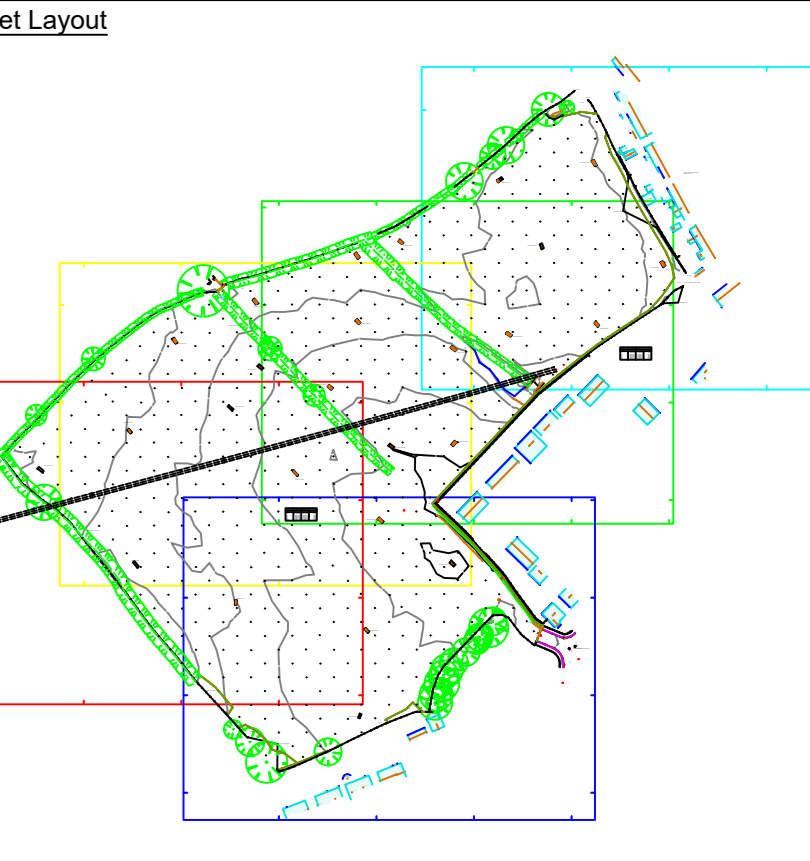


Annotations and Symbols			
7	unknown cover	10	trial hole
ac	air conditioning box	11	concrete bollard
av	air valve	12	concrete wall
bb	bedside beacon	13	concrete wall
bl	bell	14	concrete wall
br	bracket	15	concrete wall
bt	bracket	16	concrete wall
bu	bus	17	concrete wall
bu	bus shelter	18	concrete wall
bu	bus shelter	19	concrete wall
bu	bus shelter	20	concrete wall
bu	bus shelter	21	concrete wall
bu	bus shelter	22	concrete wall
bu	bus shelter	23	concrete wall
bu	bus shelter	24	concrete wall
bu	bus shelter	25	concrete wall
bu	bus shelter	26	concrete wall
bu	bus shelter	27	concrete wall
bu	bus shelter	28	concrete wall
bu	bus shelter	29	concrete wall
bu	bus shelter	30	concrete wall
bu	bus shelter	31	concrete wall
bu	bus shelter	32	concrete wall
bu	bus shelter	33	concrete wall
bu	bus shelter	34	concrete wall
bu	bus shelter	35	concrete wall
bu	bus shelter	36	concrete wall
bu	bus shelter	37	concrete wall
bu	bus shelter	38	concrete wall
bu	bus shelter	39	concrete wall
bu	bus shelter	40	concrete wall
bu	bus shelter	41	concrete wall
bu	bus shelter	42	concrete wall
bu	bus shelter	43	concrete wall
bu	bus shelter	44	concrete wall
bu	bus shelter	45	concrete wall
bu	bus shelter	46	concrete wall
bu	bus shelter	47	concrete wall
bu	bus shelter	48	concrete wall
bu	bus shelter	49	concrete wall
bu	bus shelter	50	concrete wall
bu	bus shelter	51	concrete wall
bu	bus shelter	52	concrete wall
bu	bus shelter	53	concrete wall
bu	bus shelter	54	concrete wall
bu	bus shelter	55	concrete wall
bu	bus shelter	56	concrete wall
bu	bus shelter	57	concrete wall
bu	bus shelter	58	concrete wall
bu	bus shelter	59	concrete wall
bu	bus shelter	60	concrete wall
bu	bus shelter	61	concrete wall
bu	bus shelter	62	concrete wall
bu	bus shelter	63	concrete wall
bu	bus shelter	64	concrete wall
bu	bus shelter	65	concrete wall
bu	bus shelter	66	concrete wall
bu	bus shelter	67	concrete wall
bu	bus shelter	68	concrete wall
bu	bus shelter	69	concrete wall
bu	bus shelter	70	concrete wall
bu	bus shelter	71	concrete wall
bu	bus shelter	72	concrete wall
bu	bus shelter	73	concrete wall
bu	bus shelter	74	concrete wall
bu	bus shelter	75	concrete wall
bu	bus shelter	76	concrete wall
bu	bus shelter	77	concrete wall
bu	bus shelter	78	concrete wall
bu	bus shelter	79	concrete wall
bu	bus shelter	80	concrete wall
bu	bus shelter	81	concrete wall
bu	bus shelter	82	concrete wall
bu	bus shelter	83	concrete wall
bu	bus shelter	84	concrete wall
bu	bus shelter	85	concrete wall
bu	bus shelter	86	concrete wall
bu	bus shelter	87	concrete wall
bu	bus shelter	88	concrete wall
bu	bus shelter	89	concrete wall
bu	bus shelter	90	concrete wall
bu	bus shelter	91	concrete wall
bu	bus shelter	92	concrete wall
bu	bus shelter	93	concrete wall
bu	bus shelter	94	concrete wall
bu	bus shelter	95	concrete wall
bu	bus shelter	96	concrete wall
bu	bus shelter	97	concrete wall
bu	bus shelter	98	concrete wall
bu	bus shelter	99	concrete wall
bu	bus shelter	100	concrete wall

Line Features	
bottom of batter / wood / ridge / timber face / gutter	—
break line / discontinuity	—
top of batter	—
wall (see text nearby for height / width / type)	—
retaining wall (see text nearby for height / width / type)	—
channel (all levels at channel unless noted)	—
kerb levels (shown parallel to channel -)	—
railway	—
drain / river / canal	—
overhead lines / buildings (not surveyed unless specified)	—
concrete / ramp	—
building	—
face of cladding / flower bed	—
canopy	—
verge	—
fence (see text nearby for height / width / type)	—
columns / griddings / conveyors / column face	—
brick	—
cycle lane / bus lane / white line (see text)	—
tanks / decking	—
hedge scaled to width	—
line may be as above, if just one edge	—
path / window / door	—
track	—
contours 50.00	—
contours 50.50	—



1. The survey has been accurately positioned on the Ordnance Survey National Grid system using GPS observations to the OS Active Network and the latest Ordnance Survey transformation (OSTN15/OSGM15)

2. All levels relate to Ordnance Survey Datum (Newlyn). Vertical control has been established using GPS observations to the OS Active Network and the latest Ordnance Survey transformation (OSTN15/OSGM15).

3. Local Scale Factor has been removed to transform the survey to a flat earth grid (scale factor 1.00000).
 Local Grid Origin is Control Station L1LOC.
 This is the only point where OS Grid coordinates are true.

Drawn by	Initials - LK	Dates Surveyed - 21/01/25		
Checked by				
Approved by				
Rev	Rev. Date	Purpose of revision	Drawn	Checked

site surveying services
 Site Surveying Services Ltd, Unit 1, Shawbridge Sawmill
 Taylor St, Clitheroe BB7 1LY
 T: 01200 438320 W: www.sitesurvey.co.uk

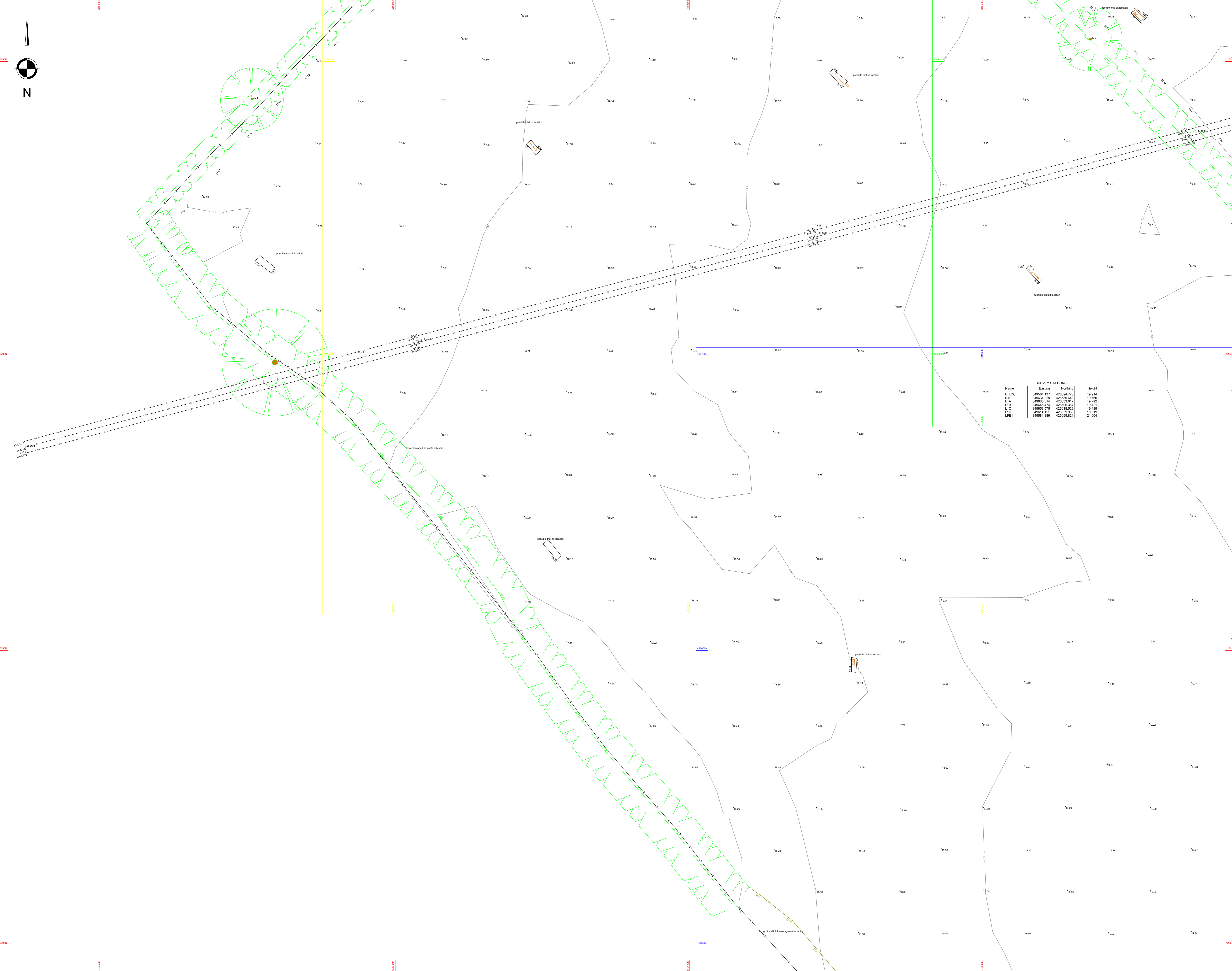
Client: Lancashire County Council

Project: Land at Walton Gardens, Liverpool Road, Hutton

Drawing title: Topographical Survey

Scale	1:200 @ A0	DO NOT SCALE
Client Job No.	S241197	
Drawing number	S241197-DR-T-001	Rev
		A

This drawing is not to be used in whole or part other than for the intended purpose and project as defined on this drawing. Refer to the contract for full terms and conditions.



Annotations and Symbols

7	unknown cover	10	trial hole
8	air conditioning box	11	concrete bollard
9	air valve	12	concrete wall
10	air conditioning box	13	concrete wall
11	air valve	14	concrete wall
12	air conditioning box	15	concrete wall
13	air valve	16	concrete wall
14	air conditioning box	17	concrete wall
15	air valve	18	concrete wall
16	air conditioning box	19	concrete wall
17	air valve	20	concrete wall
18	air conditioning box	21	concrete wall
19	air valve	22	concrete wall
20	air conditioning box	23	concrete wall
21	air valve	24	concrete wall
22	air conditioning box	25	concrete wall
23	air valve	26	concrete wall
24	air conditioning box	27	concrete wall
25	air valve	28	concrete wall
26	air conditioning box	29	concrete wall
27	air valve	30	concrete wall
28	air conditioning box	31	concrete wall
29	air valve	32	concrete wall
30	air conditioning box	33	concrete wall
31	air valve	34	concrete wall
32	air conditioning box	35	concrete wall
33	air valve	36	concrete wall
34	air conditioning box	37	concrete wall
35	air valve	38	concrete wall
36	air conditioning box	39	concrete wall
37	air valve	40	concrete wall
38	air conditioning box	41	concrete wall
39	air valve	42	concrete wall
40	air conditioning box	43	concrete wall
41	air valve	44	concrete wall
42	air conditioning box	45	concrete wall
43	air valve	46	concrete wall
44	air conditioning box	47	concrete wall
45	air valve	48	concrete wall
46	air conditioning box	49	concrete wall
47	air valve	50	concrete wall
48	air conditioning box	51	concrete wall
49	air valve	52	concrete wall
50	air conditioning box	53	concrete wall
51	air valve	54	concrete wall
52	air conditioning box	55	concrete wall
53	air valve	56	concrete wall
54	air conditioning box	57	concrete wall
55	air valve	58	concrete wall
56	air conditioning box	59	concrete wall
57	air valve	60	concrete wall
58	air conditioning box	61	concrete wall
59	air valve	62	concrete wall
60	air conditioning box	63	concrete wall
61	air valve	64	concrete wall
62	air conditioning box	65	concrete wall
63	air valve	66	concrete wall
64	air conditioning box	67	concrete wall
65	air valve	68	concrete wall
66	air conditioning box	69	concrete wall
67	air valve	70	concrete wall
68	air conditioning box	71	concrete wall
69	air valve	72	concrete wall
70	air conditioning box	73	concrete wall
71	air valve	74	concrete wall
72	air conditioning box	75	concrete wall
73	air valve	76	concrete wall
74	air conditioning box	77	concrete wall
75	air valve	78	concrete wall
76	air conditioning box	79	concrete wall
77	air valve	80	concrete wall
78	air conditioning box	81	concrete wall
79	air valve	82	concrete wall
80	air conditioning box	83	concrete wall
81	air valve	84	concrete wall
82	air conditioning box	85	concrete wall
83	air valve	86	concrete wall
84	air conditioning box	87	concrete wall
85	air valve	88	concrete wall
86	air conditioning box	89	concrete wall
87	air valve	90	concrete wall
88	air conditioning box	91	concrete wall
89	air valve	92	concrete wall
90	air conditioning box	93	concrete wall
91	air valve	94	concrete wall
92	air conditioning box	95	concrete wall
93	air valve	96	concrete wall
94	air conditioning box	97	concrete wall
95	air valve	98	concrete wall
96	air conditioning box	99	concrete wall
97	air valve	100	concrete wall

Line Features

bottom of batter / wood / ridge / timber face / gutter

break line / discontinuity

top of batter

wall (see text nearby for height / width / type)

retaining wall (see text nearby for height / width / type)

channel (all levels at channel unless noted)

kerb levels (shown parallel to channel -)

railway

drain / river / canal

overhead lines / buildings (not surveyed unless specified)

OH

concrete / ramp

building

stone

face of cladding / flower bed

canopy

verge

fence (see text nearby for height / width / type)

() (panel / security / etc.)

columns / grilles / conveyors / column face

brick

cycle lane / bus lane / white line (see text)

tanks / decking

hedge scaled to width

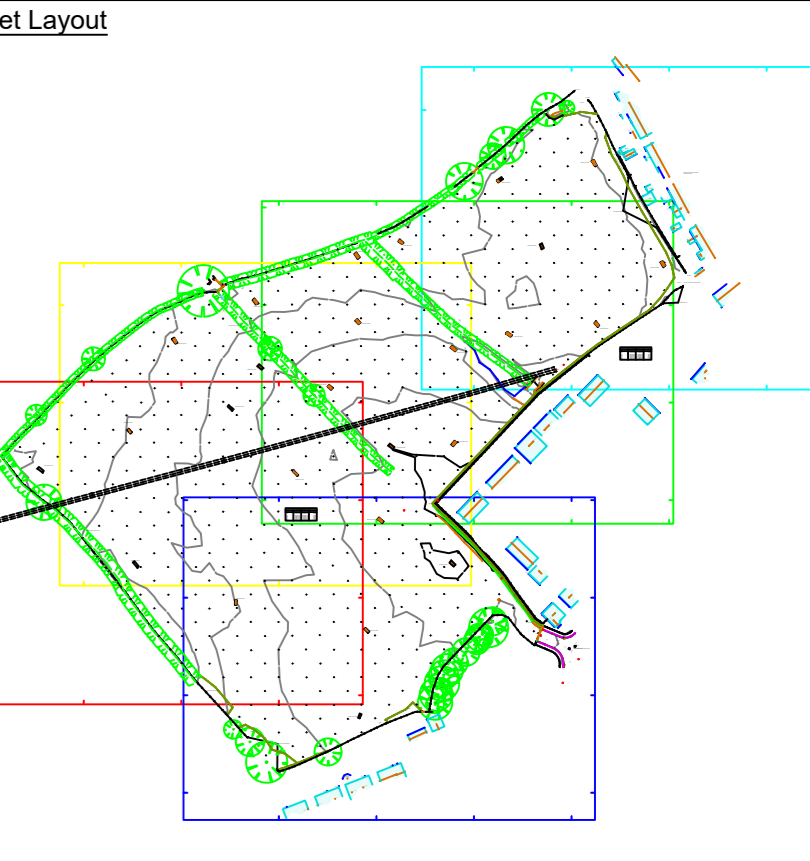
line may be as above, if just one edge
i.e. for level specific surveys both sides measured not to show level change
(see text for type / height / width / etc)

path / window / door

track

contours 50.00

50.50



- The survey has been accurately positioned on the Ordnance Survey National Grid system using GPS observations to the OS Active Network and the latest Ordnance Survey transformation (OSTN15/OSGM15)
- All levels relate to Ordnance Survey Datum (Newlyn). Vertical control has been established using GPS observations to the OS Active Network and the latest Ordnance Survey transformation (OSTN15/OSGM15).
- Local Scale Factor has been removed to transform the survey to a flat earth grid (scale factor 1.0000). This is the only point where OS Grid coordinates are true.

Surveyed by	Initials - LK	Dates Surveyed - 21/01/25		
D				
C				
A	22/01/25	Original Issue		
Rev	Rev. Date	Purpose of revision	Drawn	Checked

SSS
site surveying services

Site Surveying Services Ltd, Unit 1, Shawbridge Sawmill
Taylor St, Clitheroe BB7 1LY
T: 01200 438320 W: www.sitesurvey.co.uk

Client
Lancashire County Council

Project
Land at Walton Gardens, Liverpool Road, Hutton

Drawing title
Topographical Survey

Scale
1:200 @ A0 DO NOT SCALE

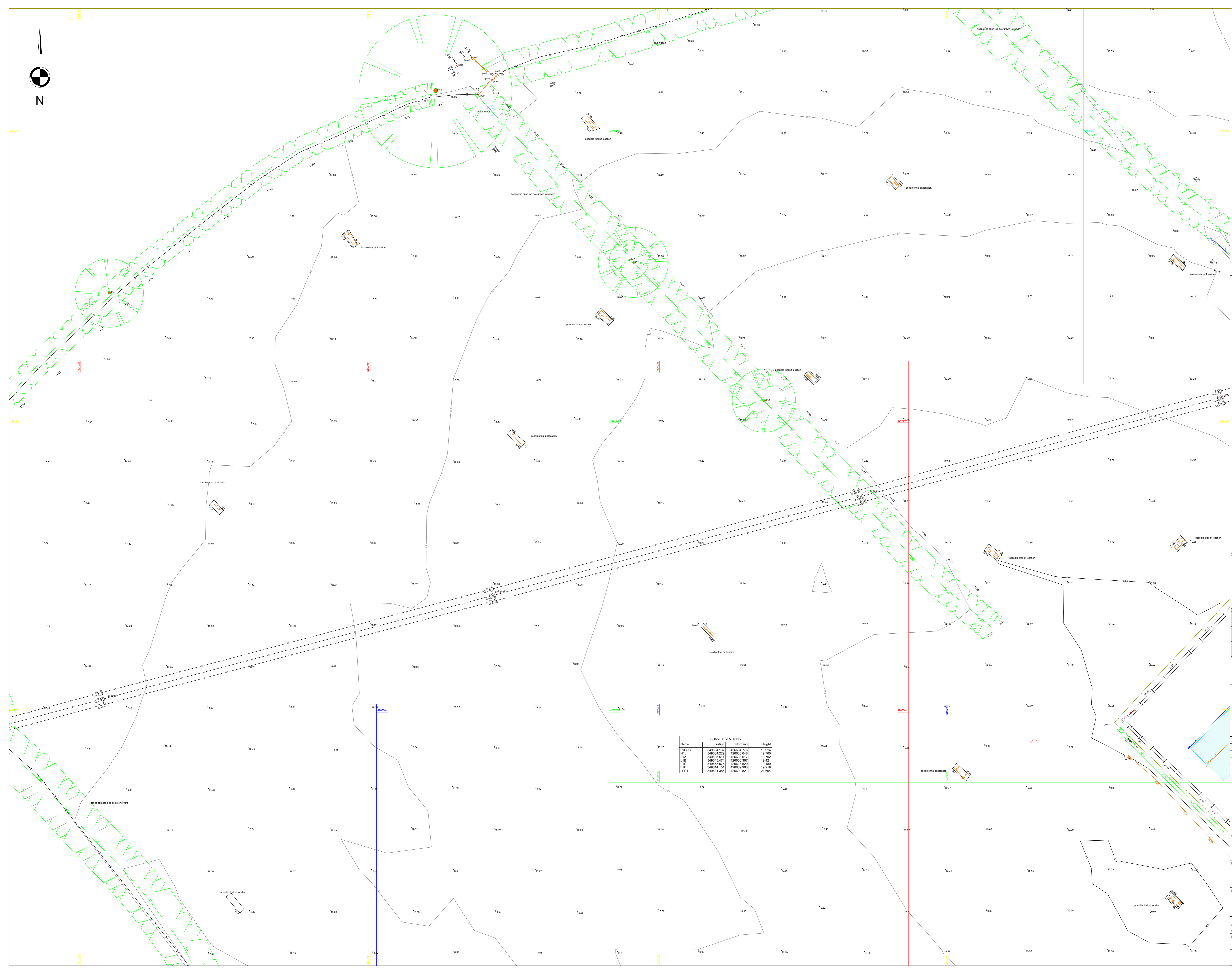
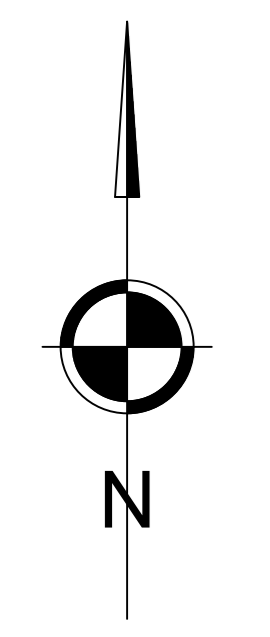
SSS Job No.
S241197

Client Job No.
S241197

Drawing number
S241197-DR-T-002

Rev
A

This drawing is not to be used in whole or part other than for the intended purpose and project as defined on this drawing. Refer to the contract for full terms and conditions.

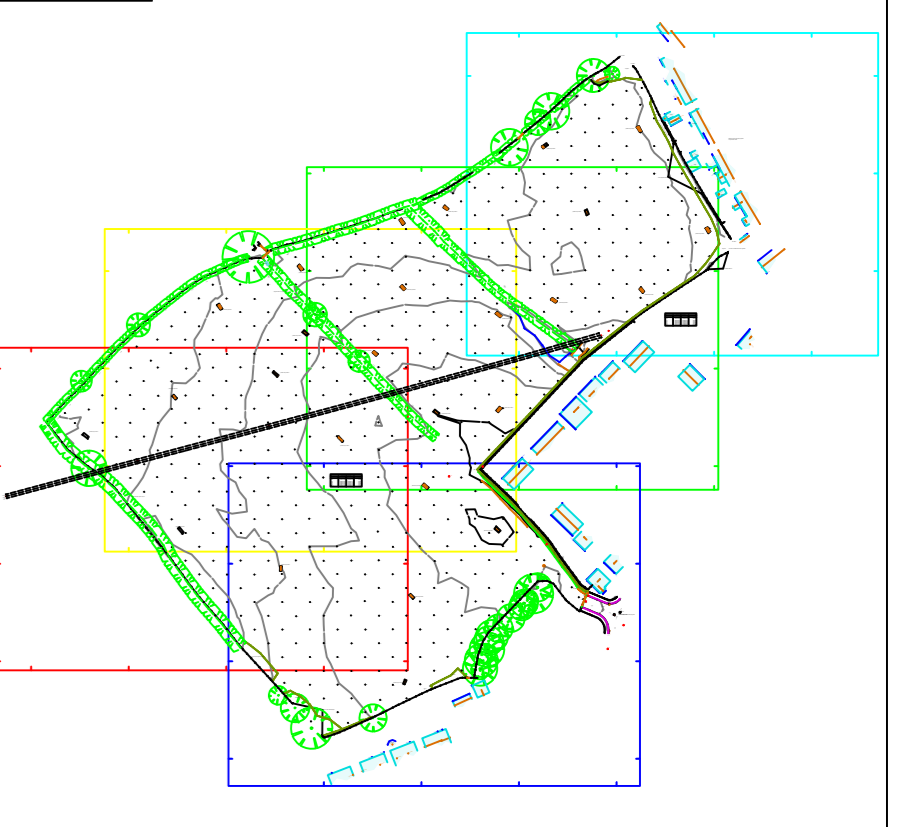


Annotations and Symbols

7	unknown cover	10	trial hole
8	air conditioning box	11	concrete bollard
9	air valve	12	concrete wall
10	air vent	13	concrete wall
11	air vent	14	concrete wall
12	air vent	15	concrete wall
13	air vent	16	concrete wall
14	air vent	17	concrete wall
15	air vent	18	concrete wall
16	air vent	19	concrete wall
17	air vent	20	concrete wall
18	air vent	21	concrete wall
19	air vent	22	concrete wall
20	air vent	23	concrete wall
21	air vent	24	concrete wall
22	air vent	25	concrete wall
23	air vent	26	concrete wall
24	air vent	27	concrete wall
25	air vent	28	concrete wall
26	air vent	29	concrete wall
27	air vent	30	concrete wall
28	air vent	31	concrete wall
29	air vent	32	concrete wall
30	air vent	33	concrete wall
31	air vent	34	concrete wall
32	air vent	35	concrete wall
33	air vent	36	concrete wall
34	air vent	37	concrete wall
35	air vent	38	concrete wall
36	air vent	39	concrete wall
37	air vent	40	concrete wall
38	air vent	41	concrete wall
39	air vent	42	concrete wall
40	air vent	43	concrete wall
41	air vent	44	concrete wall
42	air vent	45	concrete wall
43	air vent	46	concrete wall
44	air vent	47	concrete wall
45	air vent	48	concrete wall
46	air vent	49	concrete wall
47	air vent	50	concrete wall
48	air vent	51	concrete wall
49	air vent	52	concrete wall
50	air vent	53	concrete wall
51	air vent	54	concrete wall
52	air vent	55	concrete wall
53	air vent	56	concrete wall
54	air vent	57	concrete wall
55	air vent	58	concrete wall
56	air vent	59	concrete wall
57	air vent	60	concrete wall
58	air vent	61	concrete wall
59	air vent	62	concrete wall
60	air vent	63	concrete wall
61	air vent	64	concrete wall
62	air vent	65	concrete wall
63	air vent	66	concrete wall
64	air vent	67	concrete wall
65	air vent	68	concrete wall
66	air vent	69	concrete wall
67	air vent	70	concrete wall
68	air vent	71	concrete wall
69	air vent	72	concrete wall
70	air vent	73	concrete wall
71	air vent	74	concrete wall
72	air vent	75	concrete wall
73	air vent	76	concrete wall
74	air vent	77	concrete wall
75	air vent	78	concrete wall
76	air vent	79	concrete wall
77	air vent	80	concrete wall
78	air vent	81	concrete wall
79	air vent	82	concrete wall
80	air vent	83	concrete wall
81	air vent	84	concrete wall
82	air vent	85	concrete wall
83	air vent	86	concrete wall
84	air vent	87	concrete wall
85	air vent	88	concrete wall
86	air vent	89	concrete wall
87	air vent	90	concrete wall
88	air vent	91	concrete wall
89	air vent	92	concrete wall
90	air vent	93	concrete wall
91	air vent	94	concrete wall
92	air vent	95	concrete wall
93	air vent	96	concrete wall
94	air vent	97	concrete wall
95	air vent	98	concrete wall
96	air vent	99	concrete wall
97	air vent	100	concrete wall

Line Features

- bottom of batter / wood / ridge / timber face / gutter
- top of batter
- break line / discontinuity
- wall (see text nearby for height / width / type)
- retaining wall (see text nearby for height / width / type)
- channel (all levels at channel unless noted)
- kerb levels (shown parallel to channel -)
- railway
- drain / river / canal
- overhead lines / buildings (not surveyed unless specified)
- concrete / ramp
- building
- face of cladding / flower bed
- canopy
- verge
- fence (see text nearby for height / width / type)
- columns / grilles / conveyors / column face
- brick
- cycle lane / bus lane / white line (see text)
- tanks / decking
- hedge scaled to width
- line may be as above, if just one edge i.e. for level specific surveys both sides measured not to show level change (see text for type / height / width / etc)
- path / window / door
- track
- contours 50.00
- contours 50.50



1. The survey has been accurately positioned on the Ordnance Survey National Grid system using GPS observations to the OS Active Network and the latest Ordnance Survey transformation (OSTN15/OSGM15)

2. All levels relate to Ordnance Survey Datum (Newlyn). Vertical control has been established using GPS observations to the OS Active Network and the latest Ordnance Survey transformation (OSTN15/OSGM15)

3. Local Scale Factor has been removed to transform the survey to a flat earth grid (scale factor 1.00000).
Local Grid Origin is Control Station **L1LOC**.
This is the only point where OS Grid coordinates are true.

SURVEY STATIONS

Name	Eastings	Northings	Height
L1LOC	349564.137	426694.776	19.914
L1A	349564.226	426693.048	19.760
L1B	349563.514	426693.017	19.792
L1C	349564.474	426693.307	19.423
L1D	349563.075	426693.529	19.489
L1E	349564.151	426693.963	19.916
L1F1	349561.386	426699.821	21.654

Surveyed by: Initials - LK Dates Surveyed - 21/01/25

Drawn	Checked
D	
C	
B	
A	

Rev: Rev. Date Purpose of revision

Rev	Rev. Date	Purpose of revision	LK	SK	Drawn
1	23/01/25	Original Issue			



Client: Lancashire County Council

Project: Land at Walton Gardens, Liverpool Road, Hutton

Drawing title: Topographical Survey

Scale: 1:200 @ A0 DO NOT SCALE

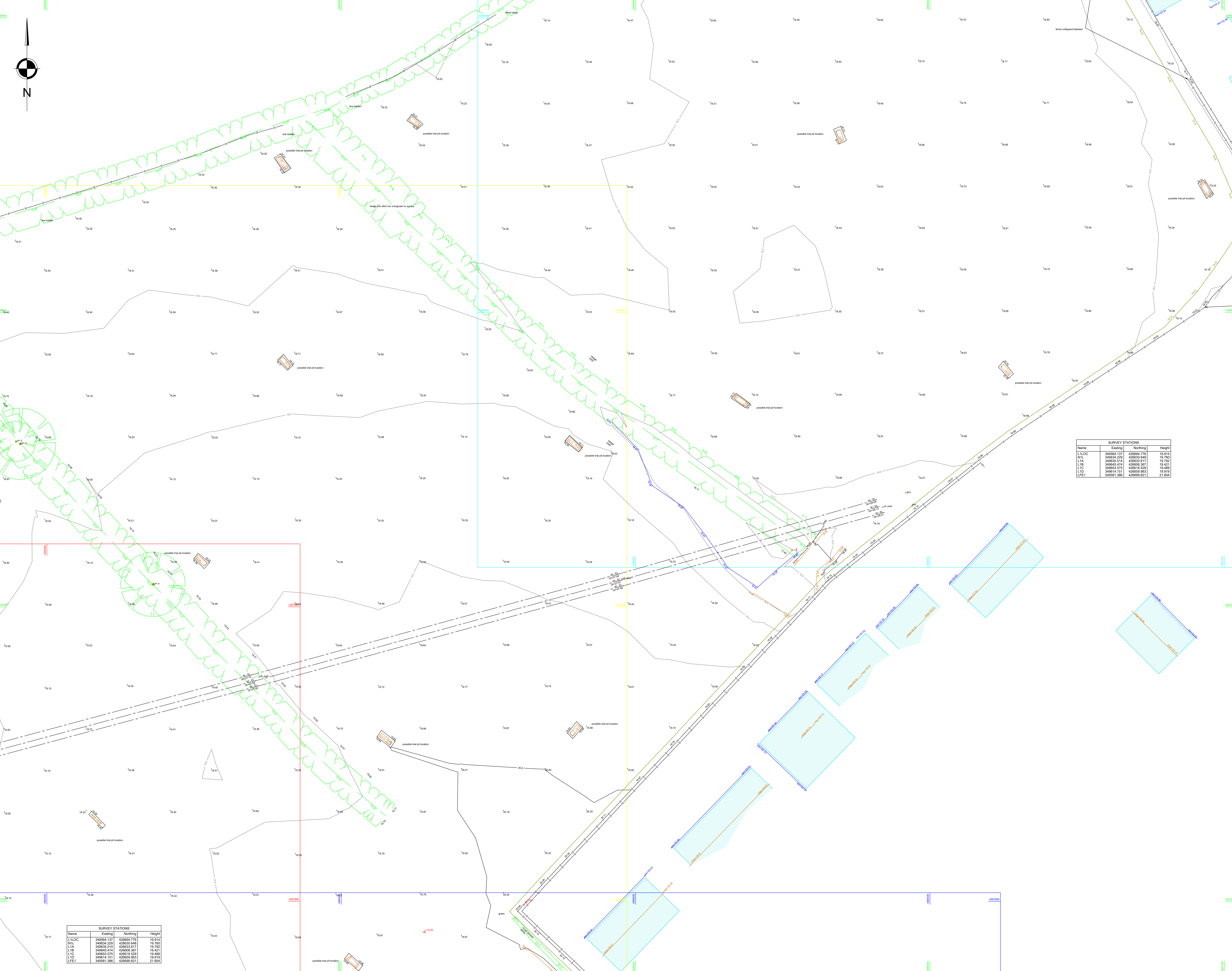
SSS Job No: S241197

Client Job No: S241197

Drawing number: S241197-DR-T-003

Rev: A

This drawing is not to be used in whole or part other than for the intended purpose and project as defined on this drawing. Refer to the contract for full terms and conditions.



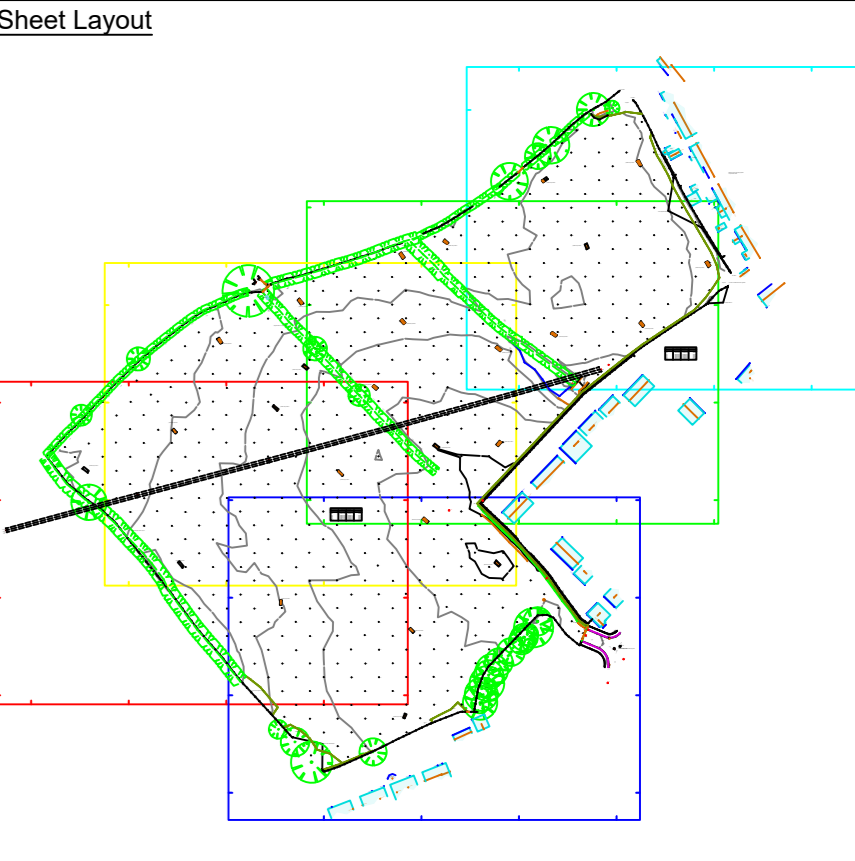
Annotations and Symbols

ac	air conditioning box	ac	air conditioning box	ac	air conditioning box
ac	air wave	ac	air wave	ac	air wave
ac	air conditioning box	ac	air conditioning box	ac	air conditioning box
ac	air conditioning box	ac	air conditioning box	ac	air conditioning box
ac	air conditioning box	ac	air conditioning box	ac	air conditioning box
ac	air conditioning box	ac	air conditioning box	ac	air conditioning box
ac	air conditioning box	ac	air conditioning box	ac	air conditioning box
ac	air conditioning box	ac	air conditioning box	ac	air conditioning box
ac	air conditioning box	ac	air conditioning box	ac	air conditioning box
ac	air conditioning box	ac	air conditioning box	ac	air conditioning box

SURVEY STATIONS

Name	Easting	Northing	Height
L1LOC	349564.137	426694.776	19.914
N1L	349634.229	426630.645	19.760
L1A	349635.514	426633.817	19.782
L1B	349645.474	426606.381	19.421
L1C	349645.574	426618.529	19.489
L1D	349645.131	426650.883	19.871
L1E1	349581.385	426659.821	21.604

- Line Features**
- bottom of batter / wood / ridge / timber face / gutter
 - top of batter
 - break line / discontinuity
 - wall (see text nearby for height / width / type)
 - retaining wall (see text nearby for height / width / type)
 - channel (all levels at channel unless noted)
 - kerb levels (shown parallel to channel -)
 - railway
 - drain / river / canal
 - overhead lines / buildings (not surveyed unless specified)
 - concrete / ramp
 - building
 - concrete
 - stone
 - face of cladding / flower bed
 - canopy
 - verge
 - fence (see text nearby for height / width / type)
 - panel / security / etc.
 - columns / griddings / conveyors / column face
 - brick
 - cycle lane / bus lane / white line (see text)
 - tanks / decking
 - hedge scaled to width
 - line may be as above, if just one edge
 - i.e. for level specific surveys both sides measured not to show level change (see text for type / height / width / etc)
 - path / window / door
 - track
 - contours
 - 50.00
 - 50.50



1. The survey has been accurately positioned on the Ordnance Survey National Grid system using GPS observations to the OS Active Network and the latest Ordnance Survey transformation (OSTN15/OSGM15)

2. All levels relate to Ordnance Survey Datum (Newlyn). Vertical control has been established using GPS observations to the OS Active Network and the latest Ordnance Survey transformation (OSTN15/OSGM15)

3. Local Scale Factor has been removed to transform the survey to a flat earth grid (scale factor 1.0000). Local Grid Origin is Control Station **L1LOC**. This is the only point where OS Grid coordinates are true.

Surveyed by: Initials - LK Dates Surveyed - 21/01/25

D			
E			
F			
Rev	Rev Date	Purpose of revision	Drawn/Checked
A	22/01/25	Original Issue	LK SK

site surveying services

Site Surveying Services Ltd, Unit 1, Shawbridge Sawmill
Taylor St, Clitheroe BB7 1LY
T: 01200 438320 W: www.sitesurvey.co.uk

Client: Lancashire County Council

Project: Land at Walton Gardens, Liverpool Road, Hutton

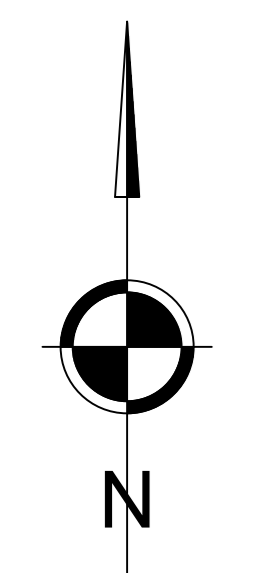
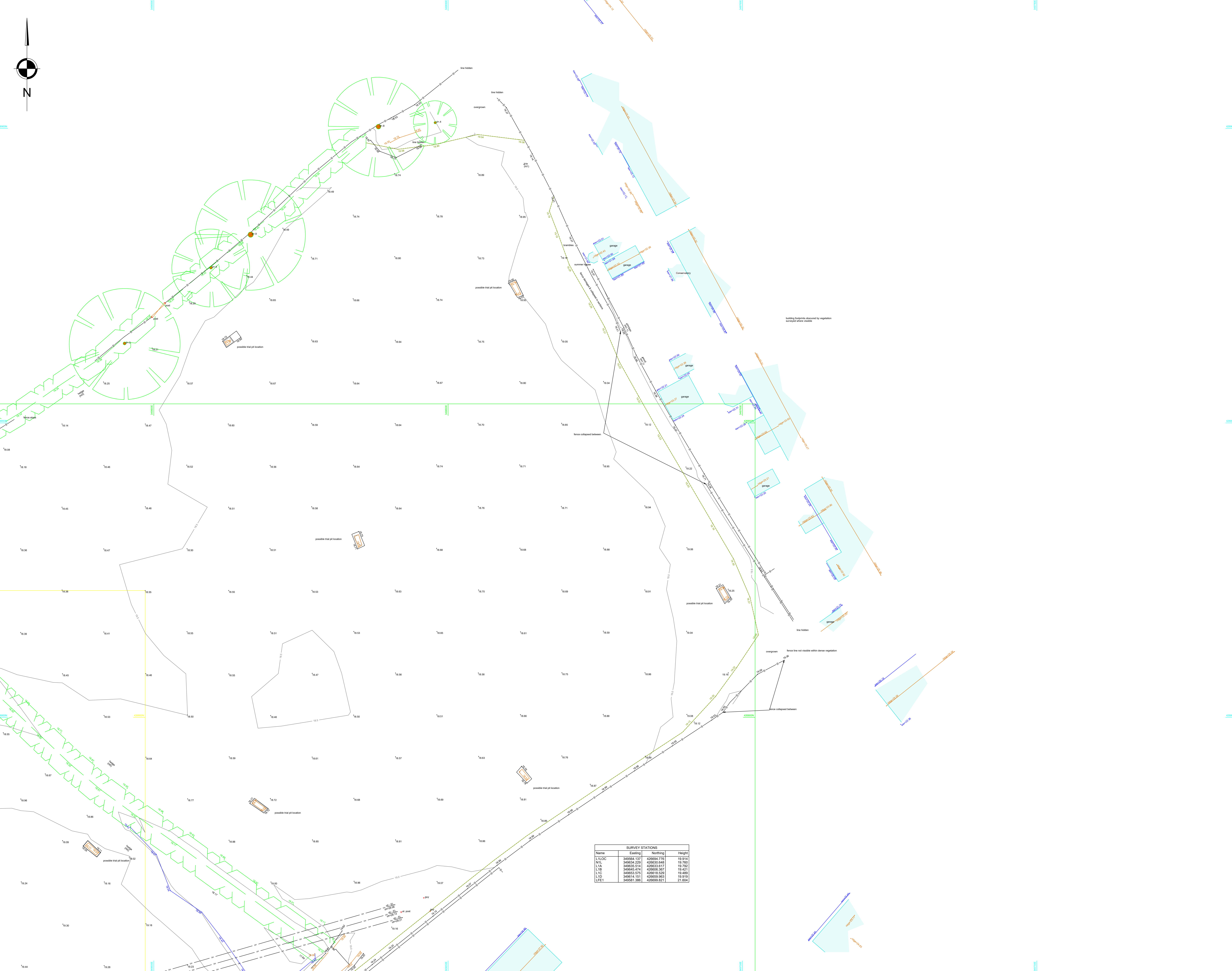
Drawing title: Topographical Survey

Scale	1:200 @ A0	DO NOT SCALE
Client Job No.	S241197	
Drawing number	S241197-DR-T-004	
		Rev A

This drawing is not to be used in whole or part other than for the intended purpose and project as defined on this drawing. Refer to the contract for full terms and conditions.

SURVEY STATIONS

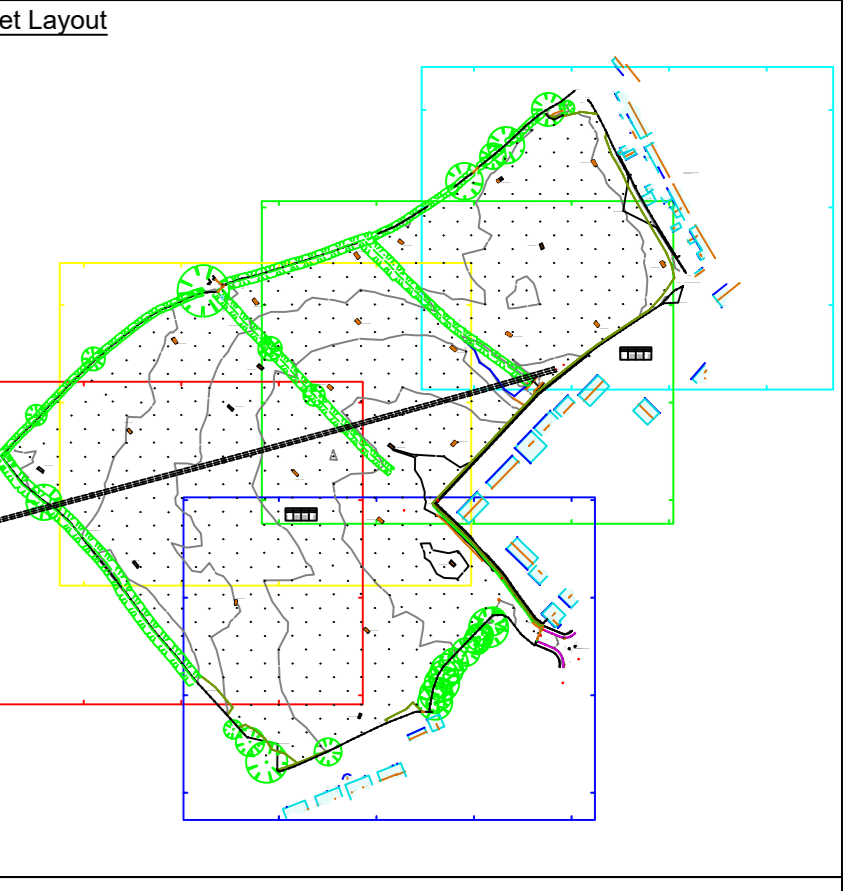
Name	Easting	Northing	Height
L1LOC	349564.137	426694.776	19.914
N1L	349634.229	426630.645	19.760
L1A	349635.514	426633.817	19.782
L1B	349645.474	426606.381	19.421
L1C	349645.574	426618.529	19.489
L1D	349645.131	426650.883	19.871
L1E1	349581.385	426659.821	21.604



SURVEY STATIONS			
Name	Easting	Northing	Height
L1LOC	349564.137	420694.778	19.914
N1L	349634.229	420630.648	19.760
L1B	349625.514	420623.817	19.752
L1C	349625.474	420620.387	19.421
L1D	349653.575	420618.320	19.489
L1E	349616.121	420650.882	19.978
L1F1	349581.386	420659.821	21.604

Annotations and Symbols			
7	unfrozen cover	10	trial hole
8	air conditioning box	11	concrete bollard
9	air valve	12	concrete wall
10	air conditioning box	13	concrete wall
11	air valve	14	concrete wall
12	air conditioning box	15	concrete wall
13	air valve	16	concrete wall
14	air conditioning box	17	concrete wall
15	air valve	18	concrete wall
16	air conditioning box	19	concrete wall
17	air valve	20	concrete wall
18	air conditioning box	21	concrete wall
19	air valve	22	concrete wall
20	air conditioning box	23	concrete wall
21	air valve	24	concrete wall
22	air conditioning box	25	concrete wall
23	air valve	26	concrete wall
24	air conditioning box	27	concrete wall
25	air valve	28	concrete wall
26	air conditioning box	29	concrete wall
27	air valve	30	concrete wall
28	air conditioning box	31	concrete wall
29	air valve	32	concrete wall
30	air conditioning box	33	concrete wall
31	air valve	34	concrete wall
32	air conditioning box	35	concrete wall
33	air valve	36	concrete wall
34	air conditioning box	37	concrete wall
35	air valve	38	concrete wall
36	air conditioning box	39	concrete wall
37	air valve	40	concrete wall
38	air conditioning box	41	concrete wall
39	air valve	42	concrete wall
40	air conditioning box	43	concrete wall
41	air valve	44	concrete wall
42	air conditioning box	45	concrete wall
43	air valve	46	concrete wall
44	air conditioning box	47	concrete wall
45	air valve	48	concrete wall
46	air conditioning box	49	concrete wall
47	air valve	50	concrete wall
48	air conditioning box	51	concrete wall
49	air valve	52	concrete wall
50	air conditioning box	53	concrete wall
51	air valve	54	concrete wall
52	air conditioning box	55	concrete wall
53	air valve	56	concrete wall
54	air conditioning box	57	concrete wall
55	air valve	58	concrete wall
56	air conditioning box	59	concrete wall
57	air valve	60	concrete wall
58	air conditioning box	61	concrete wall
59	air valve	62	concrete wall
60	air conditioning box	63	concrete wall
61	air valve	64	concrete wall
62	air conditioning box	65	concrete wall
63	air valve	66	concrete wall
64	air conditioning box	67	concrete wall
65	air valve	68	concrete wall
66	air conditioning box	69	concrete wall
67	air valve	70	concrete wall
68	air conditioning box	71	concrete wall
69	air valve	72	concrete wall
70	air conditioning box	73	concrete wall
71	air valve	74	concrete wall
72	air conditioning box	75	concrete wall
73	air valve	76	concrete wall
74	air conditioning box	77	concrete wall
75	air valve	78	concrete wall
76	air conditioning box	79	concrete wall
77	air valve	80	concrete wall
78	air conditioning box	81	concrete wall
79	air valve	82	concrete wall
80	air conditioning box	83	concrete wall
81	air valve	84	concrete wall
82	air conditioning box	85	concrete wall
83	air valve	86	concrete wall
84	air conditioning box	87	concrete wall
85	air valve	88	concrete wall
86	air conditioning box	89	concrete wall
87	air valve	90	concrete wall
88	air conditioning box	91	concrete wall
89	air valve	92	concrete wall
90	air conditioning box	93	concrete wall
91	air valve	94	concrete wall
92	air conditioning box	95	concrete wall
93	air valve	96	concrete wall
94	air conditioning box	97	concrete wall
95	air valve	98	concrete wall
96	air conditioning box	99	concrete wall
97	air valve	100	concrete wall

Line Features	
bottom of batter / wood / ridge / timber face / gutter	—
break line / discontinuity	—
top of batter	—
retaining wall (see text nearby for height / width / type)	—
wall (see text nearby for height / width / type)	—
channel (all levels at channel unless noted)	—
kerb levels (shown parallel to channel -)	—
railway	—
drain / river / canal	—
overhead lines / buildings (not surveyed unless specified)	—
concrete / ramp	—
building	—
stone	—
face of cladding / flower bed	—
canopy	—
verge	—
fence (see text nearby for height / width / type)	—
(panel / security / etc.)	—
columns / griddines / conveyors / column face	—
brick	—
cycle lane / bus lane / white line (see text)	—
tanks / decking	—
hedge scaled to width	—
line may be as above, if just one edge	—
i.e. for level specific surveys both sides	—
measured not to show level change	—
(see text for type / height / width / etc)	—
path / window / door	—
track	—
contours	—
50.00	—
50.50	—



1. The survey has been accurately positioned on the Ordnance Survey National Grid system using GPS observations to the OS Active Network and the latest Ordnance Survey transformation (OSTN15/OSGM15)

2. All levels relate to Ordnance Survey Datum (Newlyn). Vertical control has been established using GPS observations to the OS Active Network and the latest Ordnance Survey transformation (OSTN15/OSGM15).

3. Local Scale Factor has been removed to transform the survey to a flat earth grid (scale factor 1.00000). This is the only point where OS Grid coordinates are true.

Surveyed by	Initials - LK	Dates Surveyed - 21/01/25
D		
C		
B		
A	22/01/25	Original Issue
Rev	Rev. Date	Purpose of revision

SSS
site surveying services

Site Surveying Services Ltd, Unit 1, Shawbridge Sawmill
Taylor St, Clitheroe BB7 1LY
T: 01200 438320 W: www.sitesurvey.co.uk

Client	Lancashire County Council
Project	Land at Walton Gardens, Liverpool Road, Hutton
Drawing title	Topographical Survey
Scale	1:200 @ A0 DO NOT SCALE
SSS Job No.	S241197
Client Job No.	
Drawing number	S241197-DR-T-005
Rev	A
This drawing is not to be used in whole or part other than for the intended purpose and project as defined on this drawing. Refer to the contract for full terms and conditions.	