



Lancashire Joint SEND Commissioning Arrangements 2024/2026

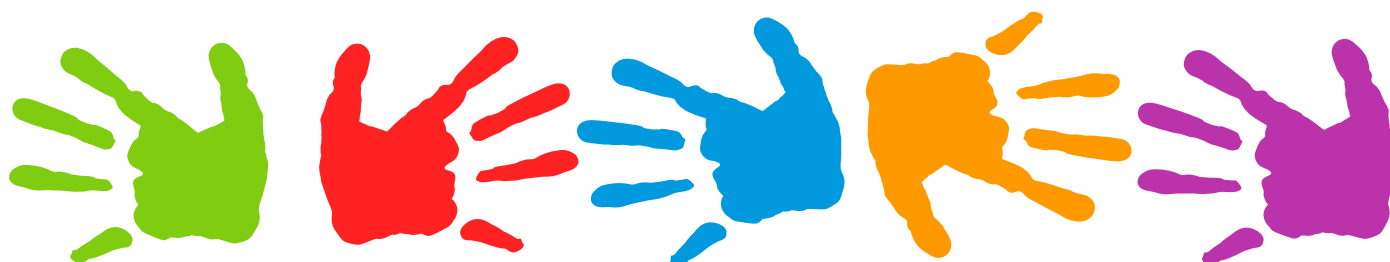
Lancashire County Council and Lancashire and
South Cumbria NHS Integrated Care Board



**Improving the lives of children and young people
with SEND, and their families**

Contents

Introduction	3
What do we know about SEND in Lancashire?	4
What does our needs analysis recommend as areas of focus?	6
The Lancashire SEND Vision.....	7
Why is it important to Joint Commission?	8
Lancashire's joint commissioning approach	9
Who are services commissioned for?	9
Three levels of Joint Commissioning	10
Planning joint commissioning	11
Governance Structure	12
The Local Offer.....	12
Measuring performance	13
Appendix 1: Lancashire Action Plan.....	14



Introduction

This document sets out the process for joint commissioning between agencies to meet the needs of 0–25-year-olds with Special Educational Needs and/or Disabilities who are resident within the Lancashire County Council area.

It outlines the process for both those with an Education, Health and Care Plan and those with identified needs who do not require this level of provision. The Lancashire vision and priorities for children and young people aged 0–25 with Special Educational Needs and/or Disabilities are set out within the Lancashire SEND Plan 2021–2025.

In developing these joint commissioning arrangements, we have been guided by:

- The requirements placed on education, health and social care services for children with SEND as set out within the Children and Families Act 2014. Services for children with SEND should be integrated where this would promote wellbeing and improve the quality of provision for disabled young people and those with SEND.
- The requirement on local authorities and Integrated Care Boards to make joint commissioning arrangements for education, health and care provision for children and young people with SEND.
- The introduction of the Care Act 2014 which requires local authorities to ensure co-operation between children’s and adults’ services to promote the integration of care and support with health services and ensure smooth transitions.
- The duties placed on local authorities and partners commissioning bodies for developing joint commissioning arrangements within the Special Educational Needs and Disability Code of Practice: 0 to 25 years.

These arrangements will lead to improved access to appropriate services, greater choice and better outcomes for individuals.

For organisations, the arrangements will see commissioning for joint objectives, efficiency and streamlining of decision-making processes and better use of collective resources.

This document provides the foundation for partners to develop integrated commissioning arrangements for children with SEND. It is intended to be a “live” document to be continually reviewed and updated in order to take account of feedback from families and other key partners.

An action plan (Appendix 1) has been developed to support implementation. The action plan will be monitored through the Lancashire SEND Partnership Board.



Priorities: Lancashire SEND Plan, 2021–25

What do we know about SEND in Lancashire?



15.5% of pupils in Lancashire have an identified special educational need



More boys than girls have an identified special educational need



A higher proportion of white children are identified as having a special educational need



Over 58% of children in need and 49% of children in care have an identified special educational need



Children eligible for Free School Meals make up 38% of the SEN population in Lancashire



Early learning goals for children with an identified special educational need are lower than comparator groups



Speech, Language and Communication Needs are the most prevalent need in primary schools, and are increasing



Social, emotional and mental health needs have risen substantially in secondary schools



Children with an identified special educational need are more likely to be absent from school, or excluded from school, than their peers



More children in Lancashire with an identified special educational need go on to education, employment and training than in comparator groups



There has been a significant rise in the % of pupils whose primary need is linked to Autistic Spectrum Condition in primary schools, but the % has stayed relatively static in secondary schools



What does our needs analysis recommend as areas of focus?

The 2024 SEN Needs assessment identified 8 key recommendations for the Lancashire system, which have informed our priorities for joint commissioning.

The recommendations were that the Local Area should:



The Lancashire SEND Vision



"Improving the lives of children and young people with SEND, and their families"

Our approach to commissioning the SEND Vision	Our purpose and success measures will be judged by children, young people and their families	Our outcomes will drive the commissioning of support services
<p>Personalised</p> <p>Building on the strengths of the family and their community to find solutions through a person and family centred planning approach.</p> <p>Integrated</p> <p>Working to keep children and young people with special educational needs and disabilities in education and care local to their home by providing coherent and joined up arrangements across services and the community.</p> <p>Local</p> <p>Based and developed within local communities by families, children and young people with additional needs.</p>	<p><i>In Lancashire, we will see...</i></p> <ul style="list-style-type: none"> • more young people in employment, education and training • more children and young people using public places and spaces • more children and young people having fun with friends and family <p><i>Children and young people in Lancashire will say...</i></p> <ul style="list-style-type: none"> • they have lots of different things to do that they enjoy • they are happy to go to school/college and that they're learning lots • their thoughts and ideas really matter and help to make a difference <p><i>Children and young people in Lancashire will feel...</i></p> <ul style="list-style-type: none"> • happy, healthy and safe • they get the right help and support, when and where they need it • positive about their futures and reaching their goals 	<ul style="list-style-type: none"> • Identifying and responding to needs in a timely and effective manner. • Meeting needs and responding to increased demand for specialist and alternative provision. • Improving the experiences of children and young people so that their outcomes are consistently good. • Strengthening confidence with children and young people, their families and our partners.



Why is it important to Joint Commission?

There are several reasons for putting in place arrangements for joint commissioning:



Children and Young People

- Improving outcomes for children and young people
- Increasing choice through use of personal budgets and joined-up support
- Telling their story once
- Move successfully into adult life
- Improved and easier-to-understand services
- Greater consistency in services and in the eligibility to access the services



The wider system

- Joint assessment and early planning to make the best uses of resources and interventions
- Working towards the same objectives and outcomes
- Make better use of data to help us improve the services and support we offer
- Ensure the voice of children, young people and their families shapes all we do
- Create stronger links between services to further improve how we work together
- Ensure children and young people are well prepared for adulthood increasing awareness of the challenges facing children and young people and how best to help them overcome them
- More efficient use of scarce resources



Lancashire's joint commissioning approach

Joint commissioning is the process by which partners across education, health and care agree at a strategic level what is needed in an area and how they will work together to commission and deliver it. Critical to doing this well is engaging with children and young people with special educational needs and disabilities and their families.

Joint commissioning is a continuous improvement cycle, which will enable partners to integrate the local support, reduce unnecessary duplication and improve the outcomes and user experience of accessing support.

Who are the Commissioners?

The partners involved in commissioning services for children, young people and families with special educational needs and disabilities include:

- Lancashire County Council – this is known as the local authority and refers to all early years, social care and education provision provided as well as universal health services commissioned such as health visitors and school nurses
- Educational establishments including schools, academies, colleges and free schools – this may include any speech and language services, pastoral care and counselling services to support pupils provided by the setting
- NHS Lancashire and South Cumbria Integrated Care Board are the commissioners of health provision such as acute hospital care, GPs, dentists, pharmacies, community services including speech and language therapy, occupational therapy and physiotherapy and special health services for example, for children that require a ventilator for support at home.
- NHS England are the commissioner for specialist provision such neonatal care and specialist children's hospitals.

Who are services commissioned for?

For the purpose of this strategy, these arrangements apply to all children and young people across Lancashire from birth to 25 who have SEND.

There are several different groups of children and young people with SEND that may require services and support to meet their identified needs, which include:

- Some children/young people who are receiving SEND support in schools
- Those children/young people up to the age of 25 with an education, health and care plan
- Young people aged 18 years and older who are eligible for an EHCP
- Children in care and care leavers who have SEND
- Children on the continuum of need with SEND
- Children who are eligible for continuing care
- Young Carers with SEND
- Children who require support in school to meet their medical needs



Three levels of Joint Commissioning

Lancashire's approach to joint commissioning is on three levels:

- Individual
- Operational
- Strategic



Objectives at each Approach

Strategic	Operational	Individual
<ul style="list-style-type: none"> • We will ensure our combined resources are used to best effect to meet the needs of the population, aligning and pooling resources to be most effective. • We will co-produce strategic plans whether that be on a Lancashire, or on a Lancashire and South Cumbria footprint, and put in place performance management and governance arrangements. • Underpinned by the Joint Strategic Needs Assessment (JSNA) and Health and Wellbeing Strategy. • Key decisions will be recommended jointly by the Lancashire SEND Partnership Board, made in consultation with parents, children and young people. • Partners will work together to monitor outcomes in education, health and care to understand the impact of provision on needs of the population • The changing needs of the population of children and young people with special education needs and disabilities will also be reviewed closely to establish whether services put in place are effective 	<ul style="list-style-type: none"> • We will review and reform specific services within our Local Offer to address gaps in provision and improve outcomes. • There will be opportunities around personalisation to look at the most cost effective and appropriate services. • It will follow either the individual or strategic commissioning approach as relevant. 	<ul style="list-style-type: none"> • Personalised support for children and young people with SEND whose needs are normally identified through an EHC Plan, utilising Personal Budgets and direct payments where appropriate. • Co-production of plans between families/children and young people and the brokers of the finance (e.g. schools/colleges/settings/ local authority/ health). • Schools, other educational providers and colleges will provide services for pupils/ students with SEN as part of their own offer. • Agreement by a multi-agency panel will occur prior to the sign off of EHCPs, where additional funding is required. • A joint review process will take place to see if the support in place is enabling the child or young person to achieve their desired outcomes and identify necessary changes to the EHCP.

Planning joint commissioning

Successful joint commissioning will enable the local authority and the ICB to make best use of all the resources available to improve outcomes for children and young people in the most efficient, effective, equitable and sustainable way.

The joint commissioning process outlined in this document will support commissioners to plan and commission based on a clear assessment of local need. The Lancashire and South Cumbria Commissioner's Network will provide a forum to identify and plan to meet needs across the ICB footprint.

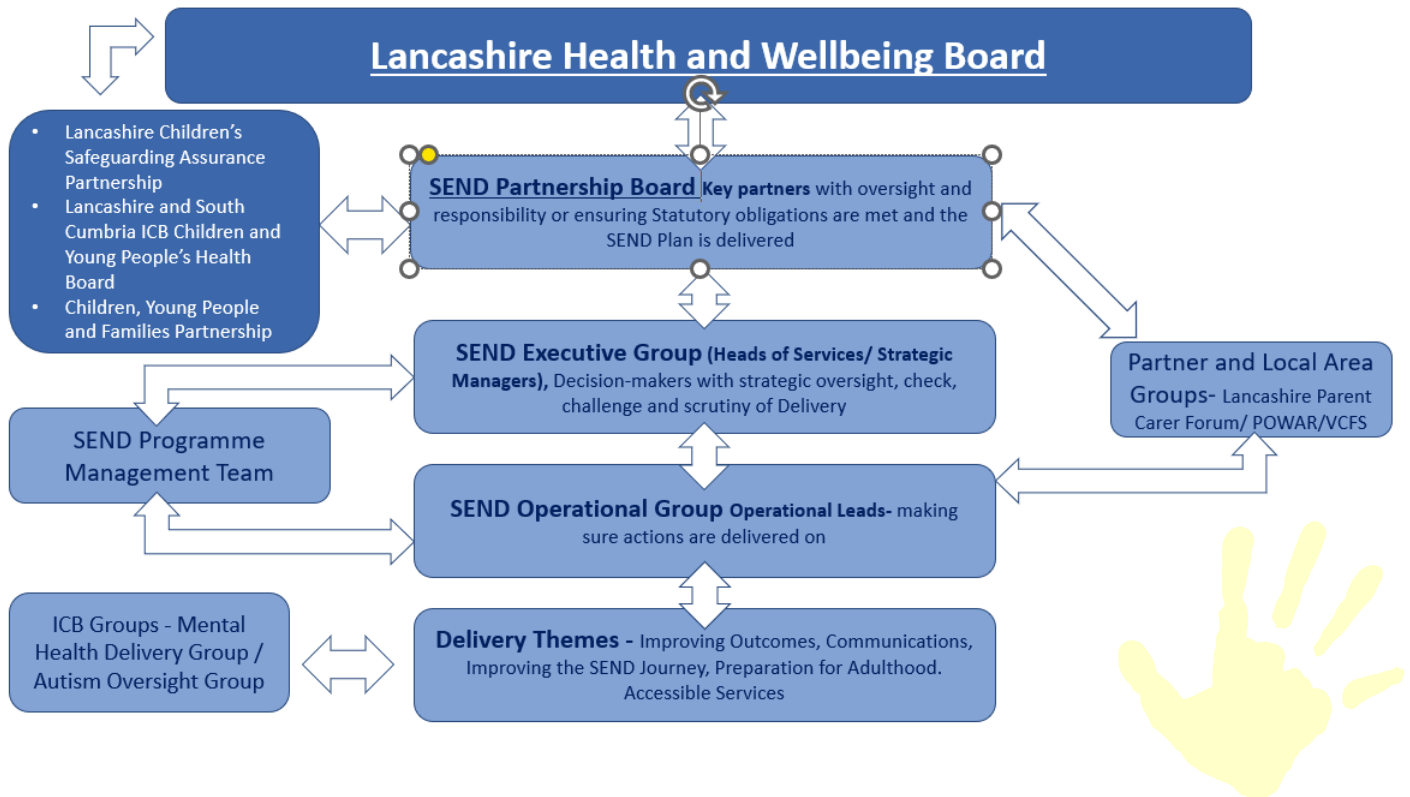
Strategic commissioning decisions will be identified by the Lancashire SEND Executive and recommended to the SEND Partnership Board and the ICB Children and Young People's Board, in advance of approval by individual organisations.

Task groups will be established as necessary, aligned to the priorities set out within the SEND Plan, to:



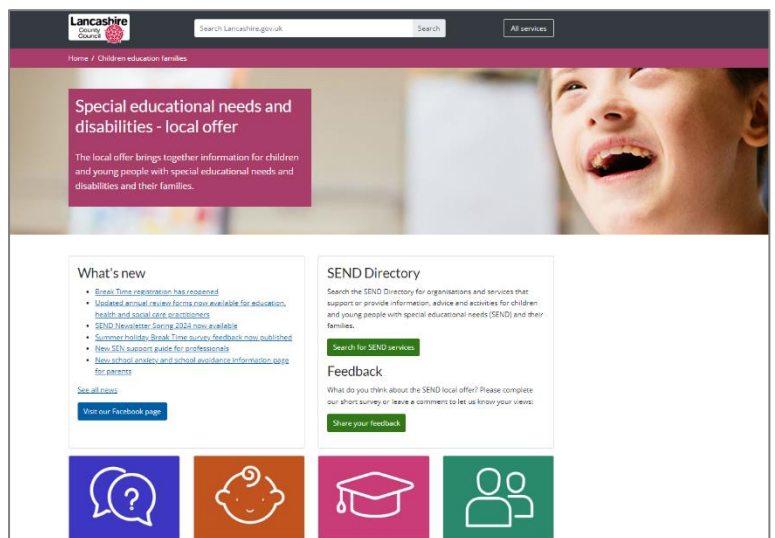
Governance Structure

The diagram below highlights the structure and connections within the Lancashire SEND partnership system:



The Local Offer

Access to information is essential to enabling children and young people with special educational needs and disabilities and their families to have a choice and make informed decisions. As part of the joint commissioning cycle, partners have worked together with children, young people, parents and carers to develop the Local Offer, mapping provision to meet the needs of children and young people with SEND in Lancashire. The local offer details the services that are available locally, aims to support personalisation and empower people to find their own solutions and plan for the future and transition, by providing information that is accessible, high quality and effective. The Local Offer is regularly reviewed and developed in consultation with children, young people, parents and carers. Representatives from the Parent Carer Forum and the Young People's Participation Group, POWAR, support the development and progress of the SEND local offer.



Measuring performance

We will be able to evaluate the impact of our arrangements and the quality of our offer through three key measures:

- Outcome measures for children and young people
- Feedback from children, young people and their families
- Ofsted and CQC inspection feedback of the local area partnership

We will know we have made a difference when:

- There is increased sufficiency within maintained, academies and free schools to better meet the needs of children and young people with special educational needs and disabilities and a reduced reliance on independent non maintained provision
- Family Hub Networks are making a positive difference to more children and families throughout Lancashire
- Waiting times for education, health and care are reduced
- Children and families feel supported whilst waiting for their needs to be assessed
- More young people are supported to remain in a school
- Services provide effective support for transition
- Children and young people with special educational needs and disabilities and parent carers are integral to co-production of services.

The arrangements will be reviewed annually in January of each year. This will be carried out by a task group comprising commissioners and managers from the local authority and ICB and reported up through the Lancashire SEND Executive, Lancashire SEND Partnership Board and ICB Children and Young People's Board. Account of feedback from parents, carers, children and young people and feedback from the Local Offer will form part of this process.

Progress against the attached action plan will be reported up to the SEND Partnership Board on a quarterly basis.



Appendix 1: Lancashire Action Plan

Key

	Work not started
	Work in progress
	Work complete

Action	Target Date	Lead	What does success look like?	RAG
Refresh the SEND JSNA	31 July 2024	LA and ICB	Refreshed joint evidence base to inform future joint commissioning.	
Further strengthen our partnership approach to participation and co-production with children, young people and their families	31 March 2025	LA and ICB	We co-produce with children, young people and their families as our default starting point. We listen, hear and understand each other, as well as giving and receiving meaningful updates.	
Strengthen the multi-agency use of data through the continued development of shared data dashboard	31 October 2024	LA and ICB	Partners have a shared understanding of performance.	
Continue to strengthen the SEND Local Offer	31 March 2025	LA	Recommissioned ICT solution promotes further join up of information across all partners.	
Continued development of Family Hubs Networks in Lancashire	Ongoing	LA with support from health	Support is available for all stages of family life, from pregnancy through to 19 years old or 25 for those with special educational needs and disabilities (SEND).	
Continued strengthening of the Break Time offer and provision of inclusive leisure activities	Ongoing	LA with support from all partners	More parent / carers able to access a break from caring.	
Ensure sufficient school places to meet the needs to children and young people with additional needs	Ongoing	LA with support from all partners	Children and young people have access to education	
Implement the graduated response to speech and language	Ongoing	ICB with support from all partners	Improved communication outcomes by supporting parents, adapting environments, developing the workforce, identifying needs, and providing appropriate interventions.	

Action	Target Date	Lead	What does success look like?	RAG
Further strengthen the emotional wellbeing and mental health services for children and young people through the Lancashire and South Cumbria Children and Young People's Mental Health Transformation Programme	Ongoing per Transformation Plan	ICB with support from LA	Access targets met. Reduced waiting times for CAMHS services. Evidence of positive outcomes.	
Further strengthen the short breaks offer for children and young people with complex needs	31 March 2025	LA with support from health	Families of children and young people with complex needs are better supported to remain together. Reduction in new entrants in to care.	
Establish new in-house children's home with joint staffing from LA and NHS to better support children in care with complex needs	31 August 2025	LA with support from ICB	More children in regulated children's homes that can meet needs. Fewer children inappropriately on paediatric wards.	
Oversight of the joint packages of care pilot	Ongoing	ICB & LA	Reduction in time taken to agree packages. To reduce wait times for children waiting for a package. Alternative and sustainable options to packages of care to meet need.	
Develop opportunities through alternative provision and expand the number and range of vocational options at school and college and work with local employers to increase employment opportunities.	Ongoing	LA /Schools and settings	More children and young people supported to remain in school and to successfully transition to adulthood.	
Strengthen the ND Pathway	Full business case to be developed by September 2024	ICB with LA support	Reduction in waiting times for needs to be assessed. Range of support services commissioned to meet CYP and family needs. Improved outcomes for children and young people with Neurodiversity Improved experience reported by CYP and their parents /carers	
Review of health input into youth offending	Ongoing	Health with support from the LA	To have the appropriate level of support in the youth offending team to meet the health needs of children and young people.	

Action	Target Date	Lead	What does success look like?	RAG
Strengthening the new multi-agency contextual safeguarding teams	Full launch April 2024. Ongoing strengthening.	LA / ICB	Strengthened support to meet the needs of young people who are/at risk of exploitation.	
Preparation for Adulthood	Ongoing	LA with support from health	Consistent pathways across health and care. Improvements in transition between services.	
Establish guidance and implement process for health professionals in responding to and managing tribunals	Ongoing	ICB with support from LA	Guidance and process in place, leading to more effective response and efficient management of tribunal work.	
Review of sensory needs across LSC, and identify recommendations	Presentation on pilot Mar 2024 Proposal within ND business case Sep 2024	ICB	Sensory needs identified and met	
Respond to the recommendations in Lancashire Joint Targeted Area Inspection (May 2024)	Ongoing	ICB / LA	Reduction in unnecessary criminalisation of children and young people with special educational needs and disabilities and those in care through timelier access to specialist diagnostic health assessments, tighter risk assessment tools, and embedding in practice the capture the voice of children and young people.	