



# SACRE NEWSLETTER

(Issue 18) Autumn 2024

## Contents

### Page 1

[RE Self Evaluation Survey 24 & SACRE FAQ's](#)

### Page 2

[Lancashire Directory of Visits & Visitors](#)

[School Portal—Did you know?](#)

[Lancashire Agreed Syllabus 2026](#)

### Page 3

[RE Champions at Park Primary](#)

### Page 4

[Peter Martin – Goodbye & Thank you](#)

[Teaching Religious & Worldviews Creatively](#)

[School Governor Information](#)

### Page 5

[NATRE -Strictly RE 2025](#)

[The North West SACRE Hub](#)

[Shap Audio Glossary](#)

### Page 6

[Essential Reading for Subject Leaders](#)

[Sacred Texts](#)

[Dealing with controversial issues in RE?](#)

### Page 7

[Little people, big dreams](#)

[Religious Festivals 2024 & 2025 calendars](#)

[Inter Faith Week, 10 -17 November 2024](#)

### Page 8

[Books to enrich the teaching of Islam -KS2](#)

[RE Subject knowledge improvement](#)

### Page 9

[RE:Quest](#)

[Searching for a Virtual Tour?](#)

### Page 10

[Our Associate RE Consultants](#)

[Needing help with anything RE?](#)

### Page 11

[LPDS/RE website Information](#)

## Annual (RE) Self Evaluation Survey 2024

Lancashire SACRE wishes to thank every school that contributed to our annual RE survey. The data collected helps to inform Lancashire's RE action plan and the programme of CPD that is offered to all schools. If you are one of the few schools that hasn't yet responded, please do!

Findings are reported to the DFE and NA-SACRE annually.

Just click this link for **Primary** <https://clickquestion.lancashire.gov.uk/runQuestionnaire.asp?qid=916818>

And this link for **Secondary** <https://clickquestion.lancashire.gov.uk/runQuestionnaire.asp?qid=916900>

## FAQ's

The Lancashire SACRE team have created a FAQ area on the new RE website with the intention of enabling schools to find answers to some of the more commonly asked questions.

[FAQ's - The Lancashire Agreed Syllabus for Religious Education - LPDS Resources](#)

**You need to have a LPDS account, to be able to see these, see [page 12](#) on how to create one if you have not done so already.**

## Lancashire Agreed Syllabus 2026: Searching for Meaning.

Every 5 years it is a statutory duty for each Local Authority to review their RE syllabus. This review process is now underway in Lancashire and is a two year process. Further communications and training opportunities for all schools will be provided prior to launch in 2026. The review will build on the current syllabus and good practice in existence.



## LCC School Portal

Did you know that the LCC Schools' Portal provides secure access to a number of online systems, including an electronic post system, traded services & a range of information aimed at supporting schools across Lancashire. We put lots of updates, newsletters, training opportunities, and other important RE/SACRE information on to the schools portal, these posts get addressed to the headteacher and to the RE Lead. If as an RE lead you are not getting these please check with your head and make sure that you are nominated as the RE Lead on the portal so that you get these important updates

[Schools' Portal \(lancsngfl.ac.uk\)](http://lancsngfl.ac.uk)



**schools'portal**

## Lancashire SACRE Directory of Visits and Visitors

For schools wishing to independently arrange RE visits and visitors we are starting to compile contact details for a range of religions and worldviews. This is a work in progress however details for each religion can be found on a new tab added to the RE website. To supplement this, school speakers across the North West are also listed on the **RE Hubs.Uk** website.

Enriching the RE curriculum by building opportunities for pupils to encounter the diversity of living religious traditions in their area roots teaching in the disciplinary lens of human science. Good RE teaching ensures that pupils appreciate the diversity **within and between** religions and worldviews. For example, when talking to pupils this stresses the importance of saying, '**SOME** Christians believe' rather than 'Christians believe'.

**Building Bridges** continue to offer a Service Level Agreement to schools. They can create a bespoke package of enrichment by arranging tours of places of worship or asking vetted faith representatives to visit schools. Please contact: Jessica Hind - 07375 841701 - [interfaithbookings1@outlook.com](mailto:interfaithbookings1@outlook.com)

## RE Champions at Park Primary School, Colne

At Park Primary School, we are committed to raising the profile of Religious Education (RE) and highlighting the importance of teaching our children about differences, encouraging them to be open-minded, respectful, and achieve greater self-awareness. We really value our RE lessons and dedicate a week each half term as our 'RE Week', this allows children to embed their learning and engage fully with the topic throughout the week.

As part of raising the profile of RE, we have established a group of 'RE Champions' at Park. This is a team of 12 children, ranging from EYFS to Year 6, who visit different places of worship throughout the year. They share their experiences with their peers during assemblies, creating a sense of excitement around religion, culture, and traditions. We are especially excited about our upcoming visit to a Hindu Mandir temple at the end of October!

Last year, some of our Muslim pupils enjoyed visiting two local schools to deliver an assembly on Islam. This was very well received, and we hope that continuing similar projects will further develop community cohesion in our town.

We also enjoy inviting a variety of speakers into our school to discuss their religion. Our relationship with our local church, St. Bartholomew's, is particularly strong. Recently, the whole school visited the church to deliver our Harvest donations, and we are very proud of the work we do at Park to foster respect and understanding across different faiths.



*4 of our pupils delivering an assembly on Islam at a nearby school*



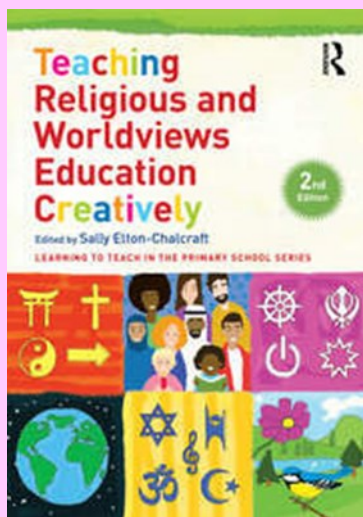
*Miss Richardson (RE Lead) and the RE Champions*

## SACRE Chair- Goodbye & Thank you



**Peter Martin** - SACRE members were very sad to say goodbye to Peter who retired as the SACRE chair in November. He has championed community cohesion and the teaching of RE across Lancashire schools for many years and will be greatly missed by all.

## Teaching Religious and Worldviews Education Creatively



This new book *Teaching Religious and Worldviews Education Creatively* offers practical lesson ideas.

Chapters cover topics such as:

- Visits, visitors and persona dolls
- The RE Searchers approach
- New ideas about policy, practice & assessment
- Insights into RE in the UK and around the world
- Anti-discriminatory RE
- New & updated practical classroom ideas from practicing teachers.

[Teaching Religious and Worldviews Education Creatively | Sally Elton-C \(taylorfrancis.com\)](https://www.taylorfrancis.com)

## School Governor Information

**Are you a School Governor? Do you want to see effective RE provision in your school?**

**This article by Lat Blaylock identifies 10 questions that you can ask your leadership team.**

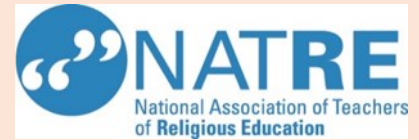
[Ten ways governors can help RE.pdf \(natre.org.uk\)](https://natre.org.uk)



## NATRE -Strictly RE 2025

Strictly RE is back in person again and is being held in Birmingham on Saturday 25<sup>th</sup> January.

Follow this link ([Strictly RE 2025](#)) for more details and to book. Member discounts are also available.



## The North West SACRE Hub

The North West SACRE Hub is hosting a special **online event** for Year 10 pupils on **Tuesday 17 December 2024 1.30- 3.00pm**

Students will be facilitated in groups by trainee RE teachers from Edge Hill University.

They will be asked to debate topical questions with other Y10 students from across the North West.

There will be presentations from two AREIAC Young Ambassadors for RE.

Maximum 2 pupils per school.

To register interest please contact Jane Yates at [northwest@re-hubs.com](mailto:northwest@re-hubs.com)

Please sign up quickly as this is proving to be a popular opportunity for students!



## Shap Audio Glossary

Not sure of religious vocabulary? Need a simple, clear explanation for what a word means?

This Shap audio glossary reads the words to you, explains what they mean and tells you which religion and worldview they belong to. Really helpful! See the link below.

[www.shapcalendar.org.uk/glossary.html](http://www.shapcalendar.org.uk/glossary.html)

# Essential Reading for Subject Leaders

## Deep and Meaningful? The Religious Education Subject Report

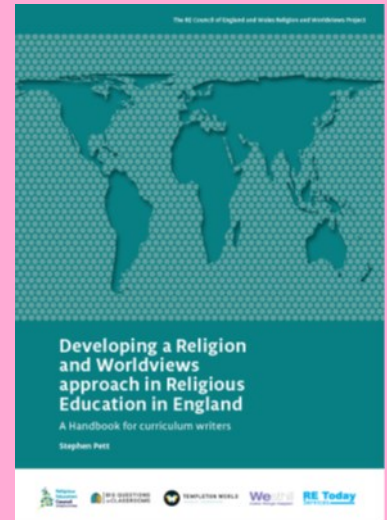
April 2024

This Ofsted subject report evaluates the common strengths & weaknesses of religious education in schools. It builds on the Ofsted religious education research review which identified factors that can contribute to high-quality school religious education.

## **Developing a Religion and Worldviews approach in Religious Education in England.**

**May 2024**

The Handbook sets out practical steps for developing a religion and worldviews curriculum.



## **SACRED TEXTS**

Providing pupils with opportunities to explore and interpret SACRED texts develops their skills as theologians. This useful online resource from the British Library provides access to SACRED texts from a range of religions and can enrich RE teaching.

[Discovering Sacred Texts - YouTube](#)



## **Dealing with controversial issues in RE?**

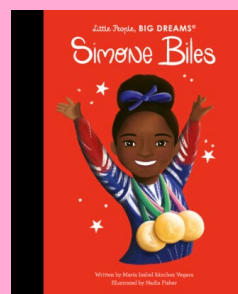
On this page on the RE Hub site ( [Controversial issues in RE \(re-hubs.uk\)](https://re-hubs.uk)) you will find links to a number of resources and websites that seek to help teachers navigate controversial and sensitive issues in the classroom.

A controversial issue is often one that might cause children and young people to get upset and argue. This webpage offers advice on how to deal well with potential disagreements and arguments in the classroom.

For teachers it is about finding and using research evidenced based approaches to help our pupils learn about difference and diversity.

## Little people big dreams

The **Little People, BIG DREAMS** series is a best-selling collection of biographies for children, created by Maria Isabel Sánchez Vegara. The series introduces young readers to the lives of inspiring figures from various fields, including activists, scientists, and politicians.



Explore the full range of titles. Discover sports stars, scientists, artists and much more... [Little People, BIG DREAMS - Be Bold, Be Brave, DREAM BIG!](https://www.littlepeoplebigdreams.com)  
([littlepeoplebigdreams.com](https://www.littlepeoplebigdreams.com))

It's a great resource for enriching teaching across Y3 in response to the Lancashire RE Key Question 'Who Should We Follow?'

## Religious Festivals 2024/2025

Follow this link for a Religious festivals 2024 calendar (this is not an exhaustive list ) [Interfaith Resources - Lancashire Professional Development Service—2025](#) dates are coming soon

Log on using your LPDS account, please see [page 11](#) for help on how to create an account if needed.

For a more detailed month by month calendar, head to the Interfaith Network website [religious festivals - Resources -](#)



## Inter Faith Week, 10 - 17 November 2024

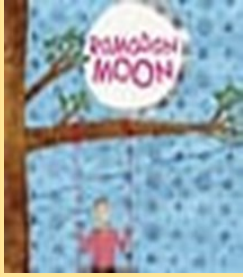
*Theme: Sharing My Story: Building Our Future*

[Inter Faith Week](#) fosters empathy, understanding & social cohesion amongst students, while enriching their knowledge of diverse faiths & beliefs.

Although the Inter Faith Network (IFN) no longer exists, a group of former member organisations - NASACRE, United Religions Initiative UK (URI), Faith & Belief Forum (F&BF), Religions for Peace, Council of Christians & Jews & All Faiths Network - are committed to moving Inter Faith Week forward in this & future years. Please click here [Inter Faith Week](#) to access a range of resources and activities.

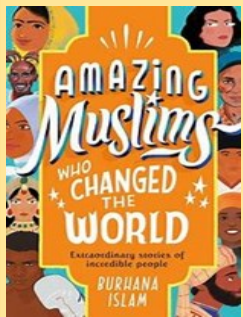
[Join the mailing list](#) to be kept up to date on Inter Faith Week developments.

## Books to enrich the teaching of Islam for KS2 pupils.



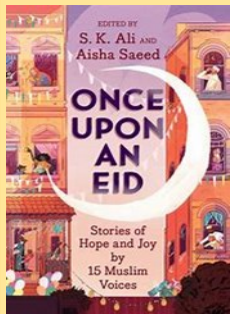
### **Ramadan Moon** by Na'ima B Robert

A Muslim family watches for the Ramadan Moon. The family describes what they do during Ramadan and how they celebrate Eid. The book explains the kinds of actions that are carried out during Ramadan and Eid and the emotions behind them.



### **Amazing Muslims who Changed the World** by Burhana Islam

This is a book of mini biographies about Muslims who, through history, have changed the world. It includes Ibtihaj Muhammad: the Olympic and World Champion fencer and the first American to compete in the games wearing a hijab. Noor Inayat Khan: the Indian Princess who became a British spy during WWII.



### **Once upon an Eid** by SK Ali and Aisha Saeed A

This is a series of short stories about the celebrations of Eid ul Fitr and Eid ul Adha. A range of Muslim authors talk about every element of the festival from the sound of frying samosas to the joy of picking out a new outfit and the obligation of prayer.

## RE Subject knowledge improvement

For teachers wanting to improve their RE subject knowledge, the Culham St Gabriel's Short courses are recommended. There are a number of free courses available. For more information see

[Culham St Gabriel's Trust Moodle \(cstg.org.uk\)](http://cstg.org.uk)



**CULHAM ST GABRIEL'S**  
CHAMPIONING RELIGION AND WORLDVIEWS EDUCATION



# RE:Quest

[RE:Quest \(request.org.uk\)](http://request.org.uk)

The RE:QUEST website offers a wealth of resources to support the teaching of Christianity. Just search by key word and a host of resources and videos become available.

The screenshot shows the RE:QUEST website interface. At the top, there is a navigation bar with the RE:QUEST logo, the text 'Region: England, Wales and Northern Ireland', and a Facebook icon. The main navigation menu includes 'Home', 'Resources', 'Boards', 'Teachers', 'Get in Touch', and 'Log In'. Below the navigation, there is a grid of six resource cards, each with a title, a brief description, and a 'View' button. The cards are:

- Adult Baptism**: Why is baptism so important to Christians? (Text icon)
- Adult Baptism**: A number of Christians talk about their decision to be baptised (Video icon)
- Adult Baptism**: What happens during a believer's baptism? (Text icon)
- An Explanation of Infant Baptism**: (Text icon)
- Baptism and Confirmation**: An interactive introduction to baptism and confirmation (Interactive icon)
- Baptism Explained**: Why is baptism important for Christians? (Text icon)

## Searching for a Virtual Tour?

The RE Hub site provides links to virtual tours for all the main religions.

Click Here: [Virtual Tours \(re-hubs.uk\)](http://re-hubs.uk)

The screenshot shows the RE HUBS website. The header includes the RE HUBS logo and a navigation menu with 'Home', 'Hubs', 'Calendar', 'Upskill', 'RE Jobs', 'Get Involved', 'About', 'Contact', and 'Search'. The main content area is titled 'Virtual Tours' and contains a sub-header: 'Find below a selection of websites providing virtual tours for places of interest.' Below this, there is a grid of four virtual tour cards:

- A virtual tour website for RE and SMSC (Cumbria DEC)**
- Buddhism, Warwickshire SACRE Religions of the world**
- Christian Canterbury Cathedral - Canterbury**
- Christian Westminster Abbey - London**

Below these cards, the start of another row is visible with titles like 'Christian Newark', 'Christian The', 'Christian', and 'Hindu ISKCON'.

# Our Associate RE Consultants

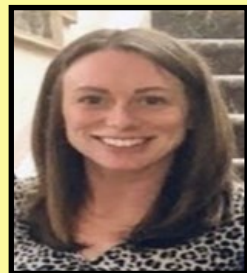
**Helen Hall** - My name is Helen Hall. I am currently Lead Practitioner at Lea Community Primary School in Preston. I have a degree in Religious Studies and love teaching RE in school. I have been working with the RE team for a number of years now and have thoroughly enjoyed taking my passion for the subject beyond my school and working with other professionals in the area to ensure that children receive a high-quality religious education.



**Michelle Smyth** — I currently work as a Year 3/4 class teacher at Westhead Lathom St James and am responsible for RE. I have worked extensively across primary schools in Manchester and Stockport as an R.E. coordinator and I am passionate about the teaching of R.E creatively. I am excited to join the Lancashire R.E team and I look forward to supporting others, on their journey to delivering a great R.E curriculum for all their pupils.



**Rebekah Fielding** Hi! I'm Rebekah and I am part of the RE Advisory team. My Leadership roles have included Assistant Headteacher and Acting Headteacher. I am KS1 manager, SENDCo and RE Leader, with a degree in the subject. I currently lead the RE Hub for Manchester Diocese. These roles have equipped me with the knowledge and skills to support, encourage and enable RE Colleagues to teach high quality Religious Education, with an interesting, practical and creative approach for our children.



**Natalie Gould**—Coming soon

## Needing Help with RE?

- Are you finding the Agreed Syllabus a challenge?
- Not sure how to assess in RE?
- Needing to increase subject knowledge of a specific religion?
- Wanting to raise the profile of RE in your school?
- Committed to developing the effectiveness of the subject leader for Religious Education?

To enquire about RE support and/or to find out more about what we offer please click this link and fill out the enquiry form, and someone will be in touch with you very soon.

<https://clickquestion.lancashire.gov.uk/runQuestionnaire.asp?qid=909700>

## New LPDS Website (Teaching & Learning)

You should be aware by now that the Lancashire Grid for Learning (LancsNGFL) moved in July 2022 & is now combined with the Lancashire Professional Development Service (LPDS) website.

The **LPDS Teaching and Learning Website** can be accessed here: [www.lancashire.gov.uk/lpds](http://www.lancashire.gov.uk/lpds) If you have a RE website subscription it is located here:

[Religious Education - LPDS Resources \(lancashire.gov.uk\)](http://www.lancashire.gov.uk/lpds/resources/religious-education)

In order to access all of the password protected materials that are available to your school in the **premium & exclusive areas** of the website that you or your school subscribes to, to book on o a course or order a publication you first need your own teacher account to be set up on the new LPDS website, the head has to do this in the first instance, they need to follow the guidance sent to them periodically since July 2022 via the portal & via email, attached to this email, help is also available on the website [Help - LPDS Resources \(lancashire.gov.uk\)](http://www.lancashire.gov.uk/lpds/resources/help)

### **Account Set up order;**

1. **Head** to set up an LPDS account for themselves using this link (if not already done so), it is suggested using the head@ email address [Register - Lancashire Professional Development Service](http://www.lancashire.gov.uk/lpds/register)
2. **Head** to email [LPDS@lancashire.gov.uk](mailto:LPDS@lancashire.gov.uk) & let them know which email address has been used to register, LPDS will then add the RE subscription on to your account.
3. **Head** to set up an LPDS account for all teachers
4. **Head** to then give teachers access to each subscription (SLA) as required, such as RE, Maths, Music, PE & English
5. **Teachers** to use forgotten password link to access materials

The help section on the website will answer any questions;

[Help - Lancashire Professional Development Service](http://www.lancashire.gov.uk/lpds/resources/help)

**Please note that teachers cannot do stage 5 if the head has not already set up an account on their behalf.**

If you need any **technical support** regarding logging on **after** your head has set you up with an account then please contact [lpds@lancashire.gov.uk](mailto:lpds@lancashire.gov.uk)

For other queries such as website content please do not hesitate to contact us on 01257 516166 or [advisory.support@lancashire.gov.uk](mailto:advisory.support@lancashire.gov.uk)

