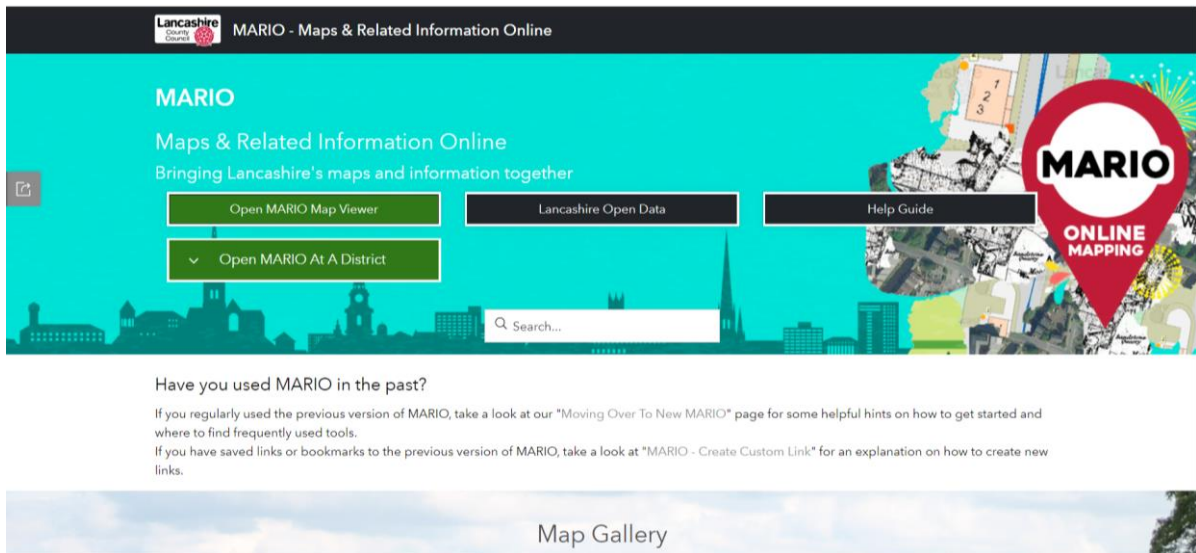


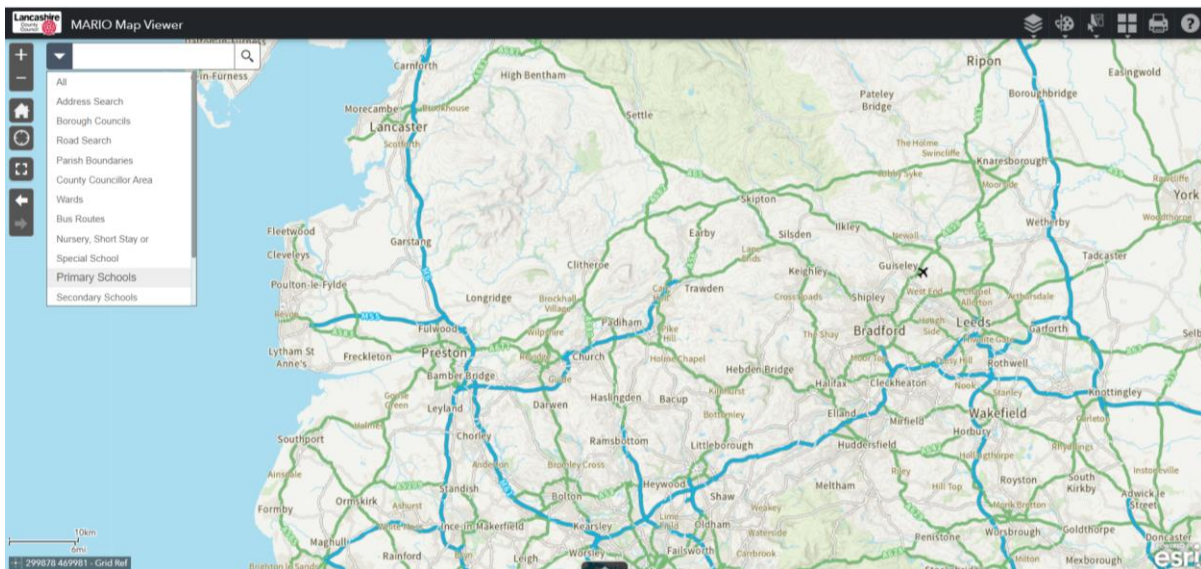


Step-By-Step Guide on how to use Mario map-overlying website

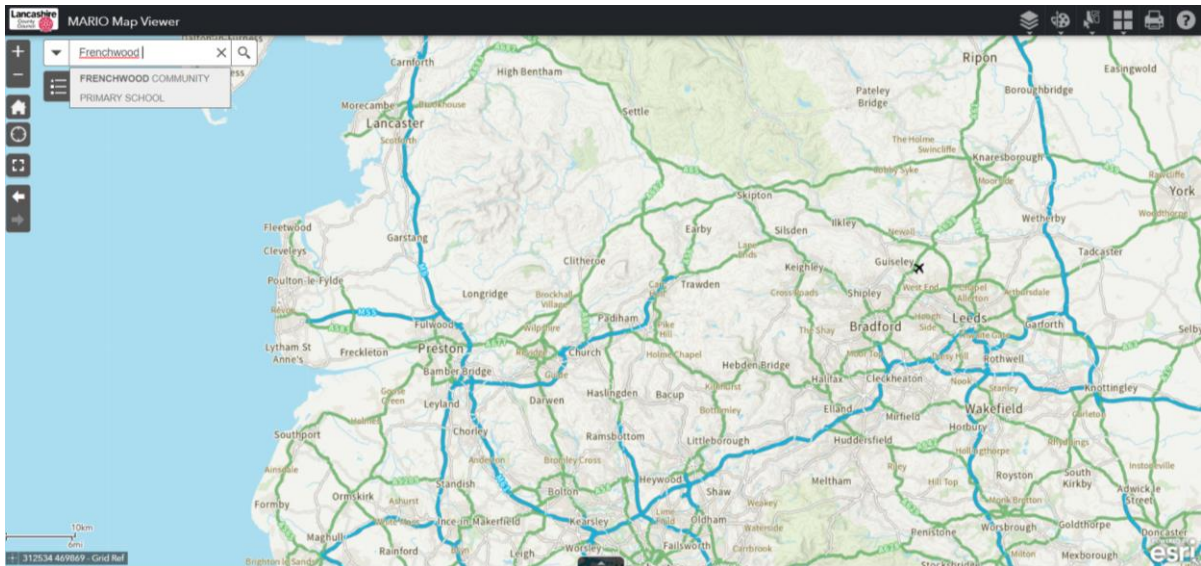
1. Click on 'Open MARIO Map Viewer'



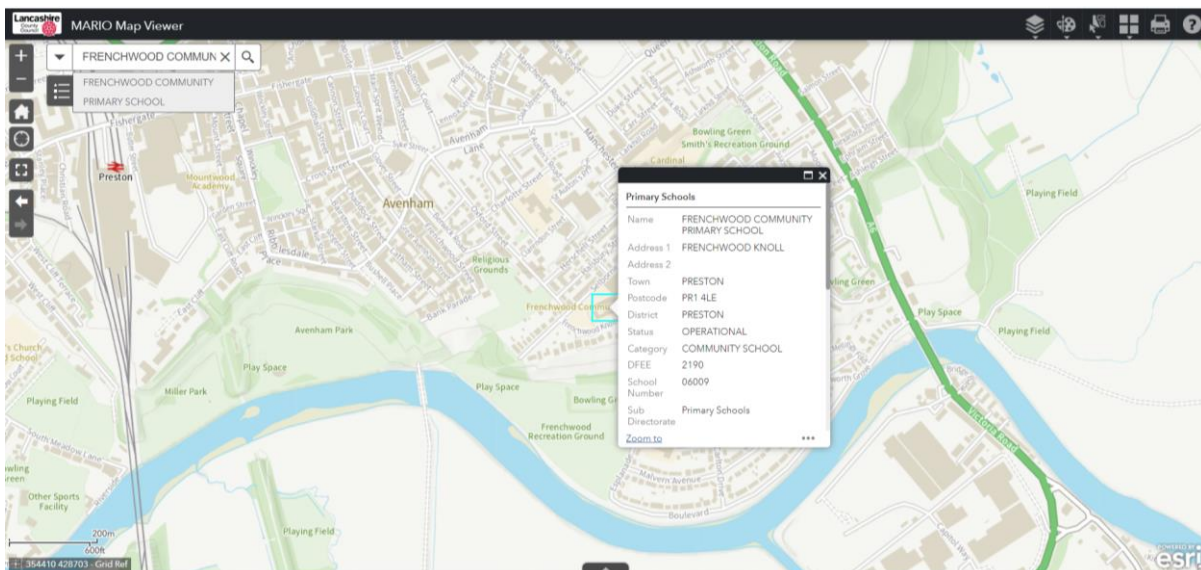
2. Click on the downward arrow adjacent to the typing field on the left side of the screen and select 'primary schools'



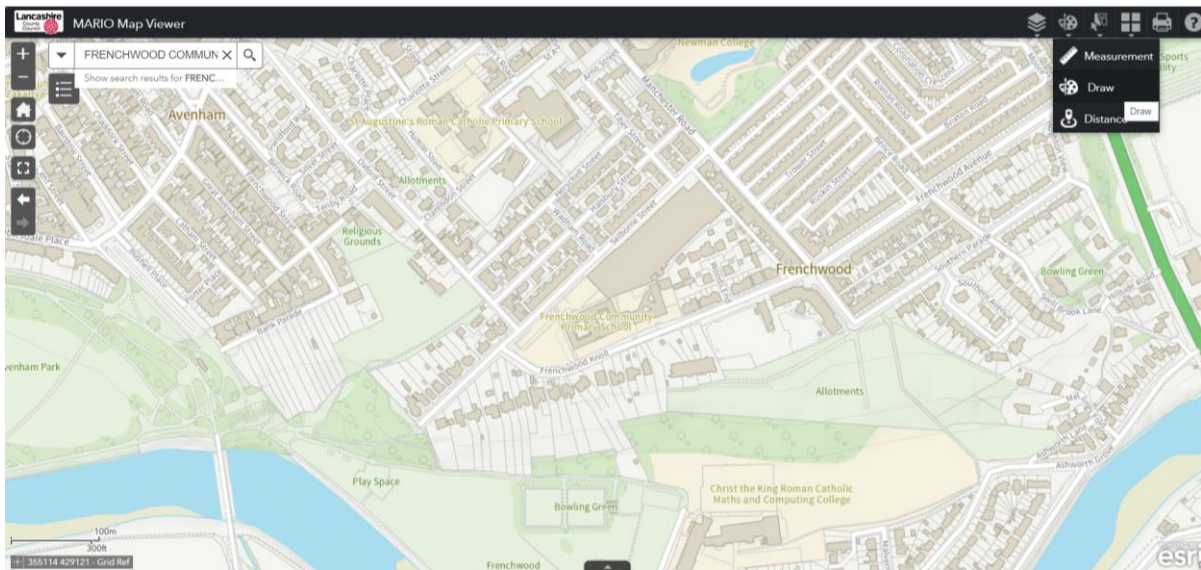
- Type in the name of your school and select it when it appears below the typing field. Should your school not appear after typing it in, return to the drop down menu and select 'Road Search' and then type in the road your school is located.



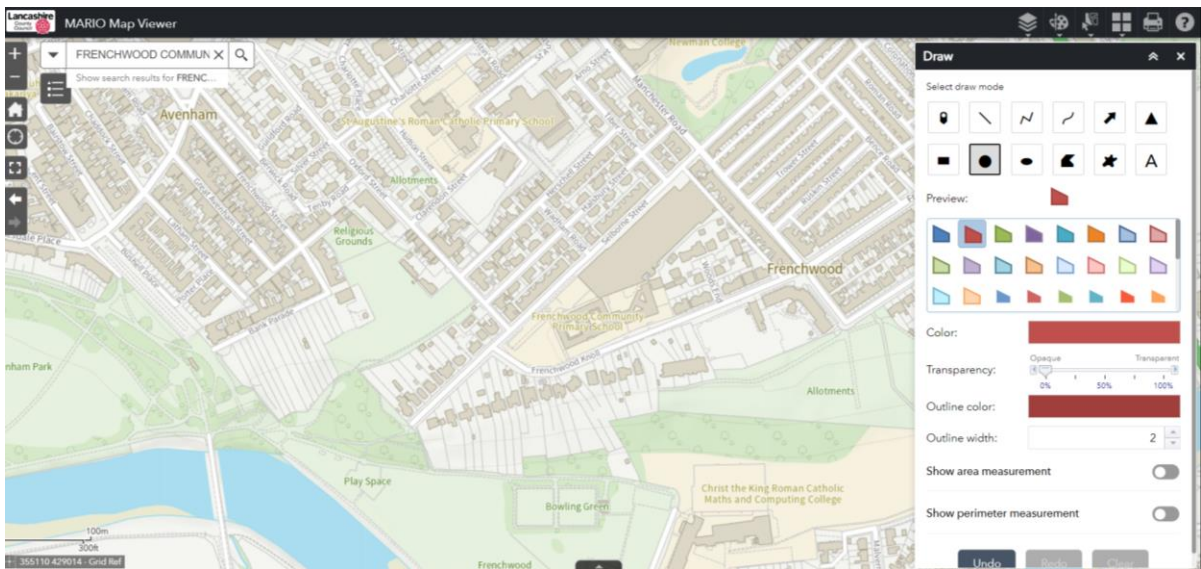
- Once selected you will see some credentials relating to your school. Once viewed this can be shut down by clicking on the 'x' on the top right of the box.



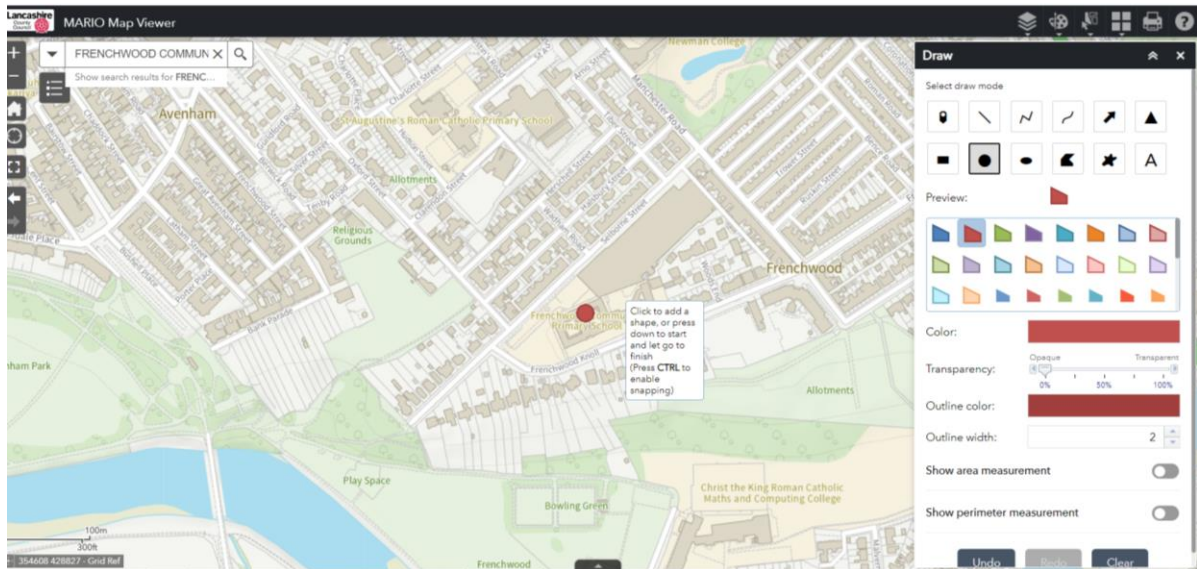
5. Click on the 'art palette' icon in the top right corner and select 'Draw'



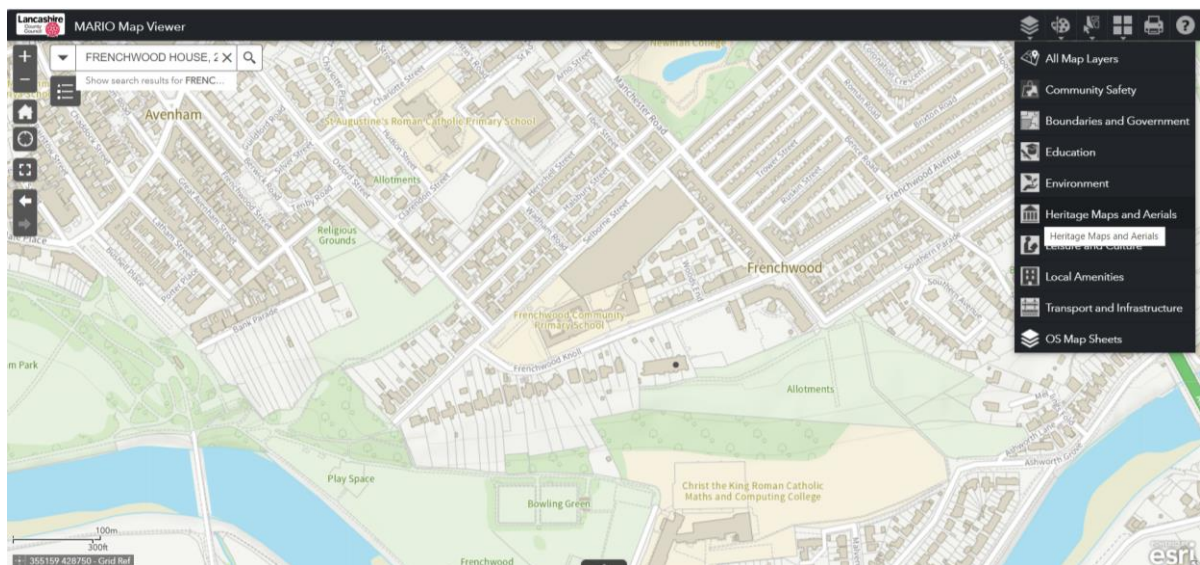
6. Once opened you can select what type of mark you prefer to make on your map. I have chosen a red circle here as this will show up nicely on all overlays.



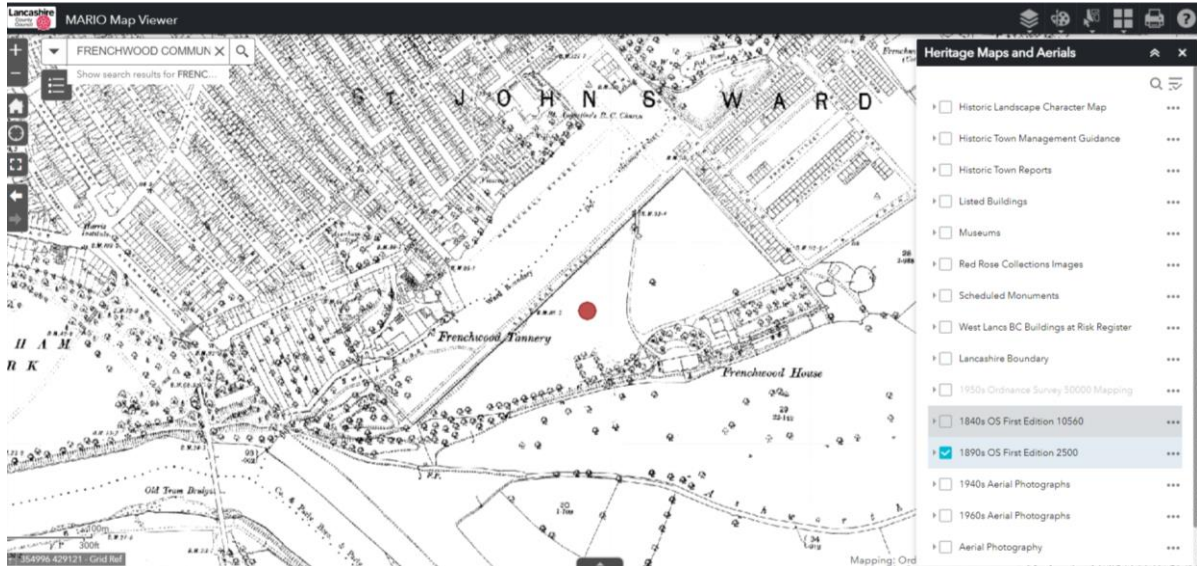
- Then click and drag the mouse over the area where you would like to draw your marker, making it as small or as large as you like, and then release the mouse button. To close the 'Draw' screen simply click on the 'x' or if you prefer to keep it open but still out of the way, select the double chevrons next to it.



- Next click on the piled books icon in the top right corner and select 'Heritage Maps and Aerials' option



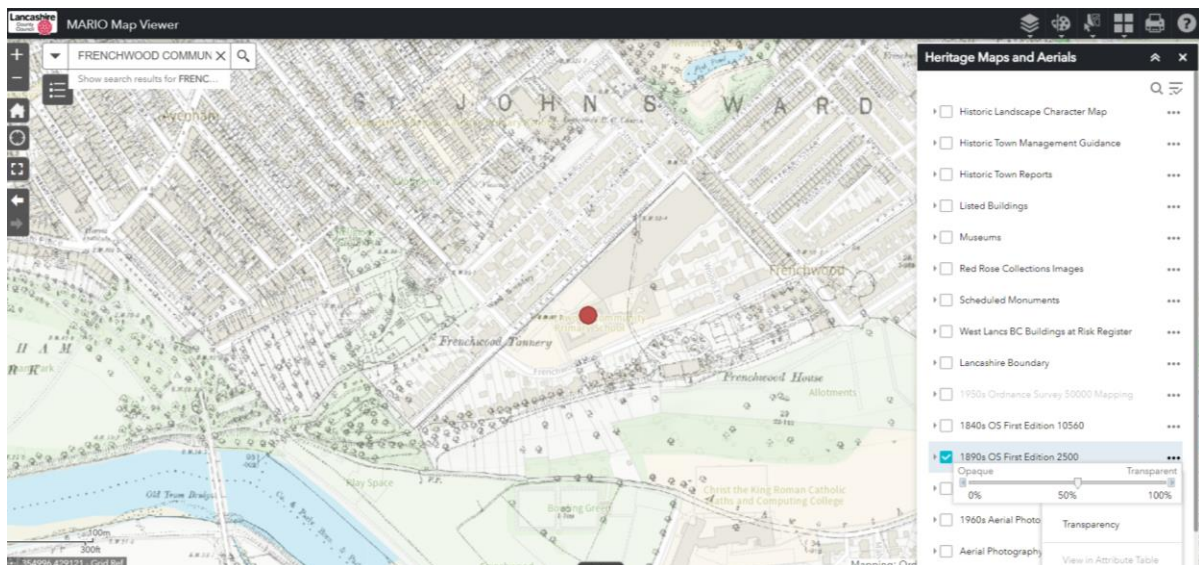
9. From the list of overlays, select one of two historical ordnance survey map of the area. Here I have selected the '1890s OS First Edition 2500'. Simply tick the box on the left side of the text for the map to appear. If you would like to view more of the map you can do so by clicking and dragging your mouse over the map. You can also zoom in and out by using your mouse wheel.



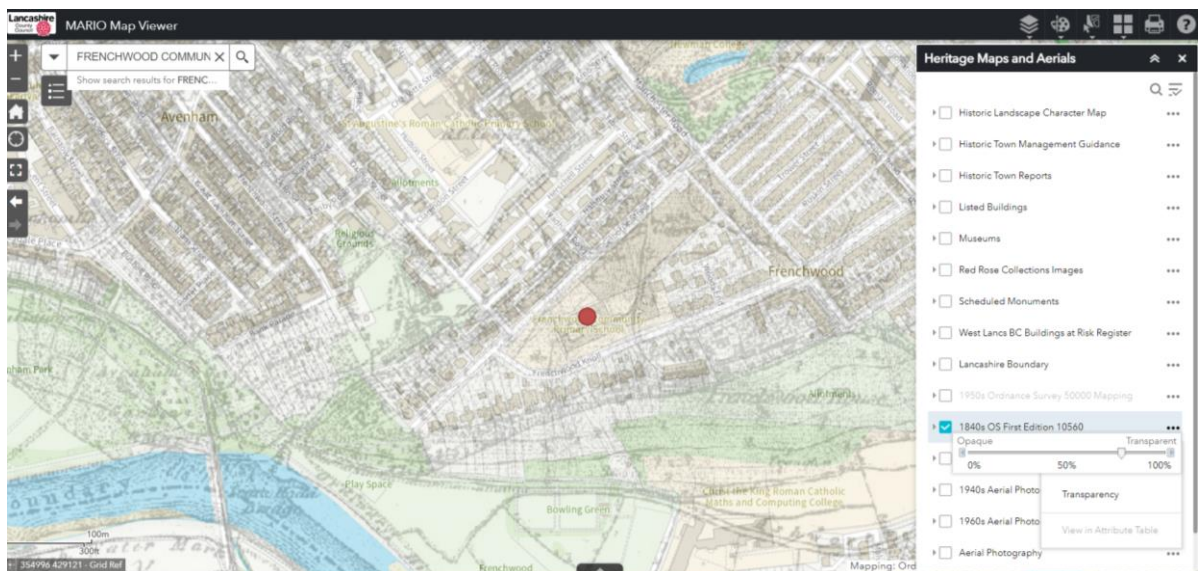
10. Then click on the three dots on the right side of the text as shown below and select 'transparency'



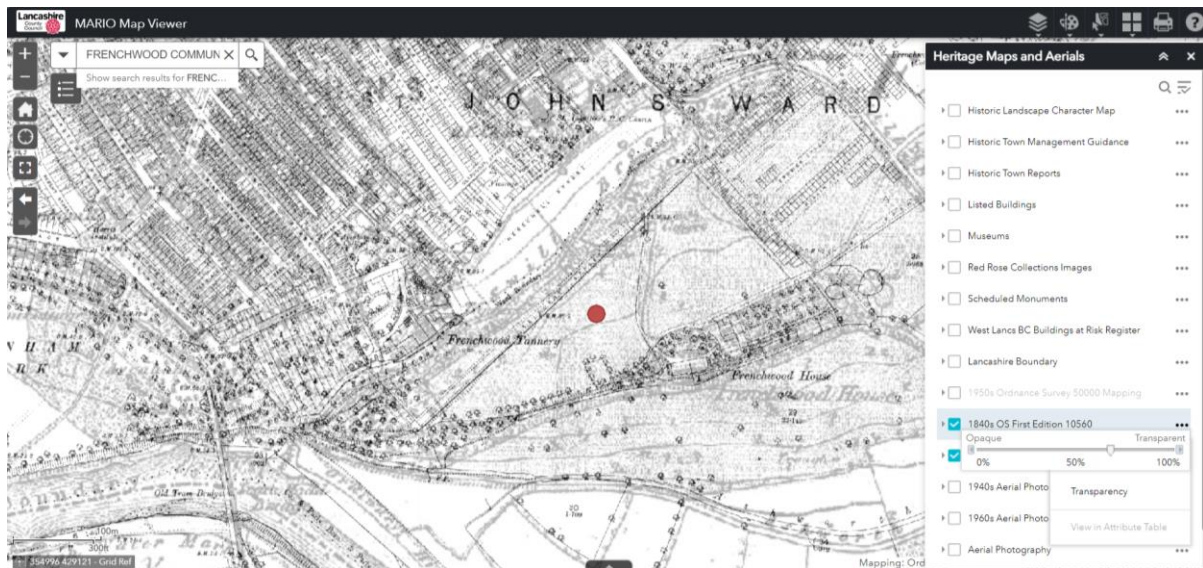
11. Now you can overlay this old map with the current modern map of the area by using the transparency bar as seen below. Once you have finished viewing this overlay be sure to return the bar back to '0%' before you select another one so there isn't any confusion with your image.



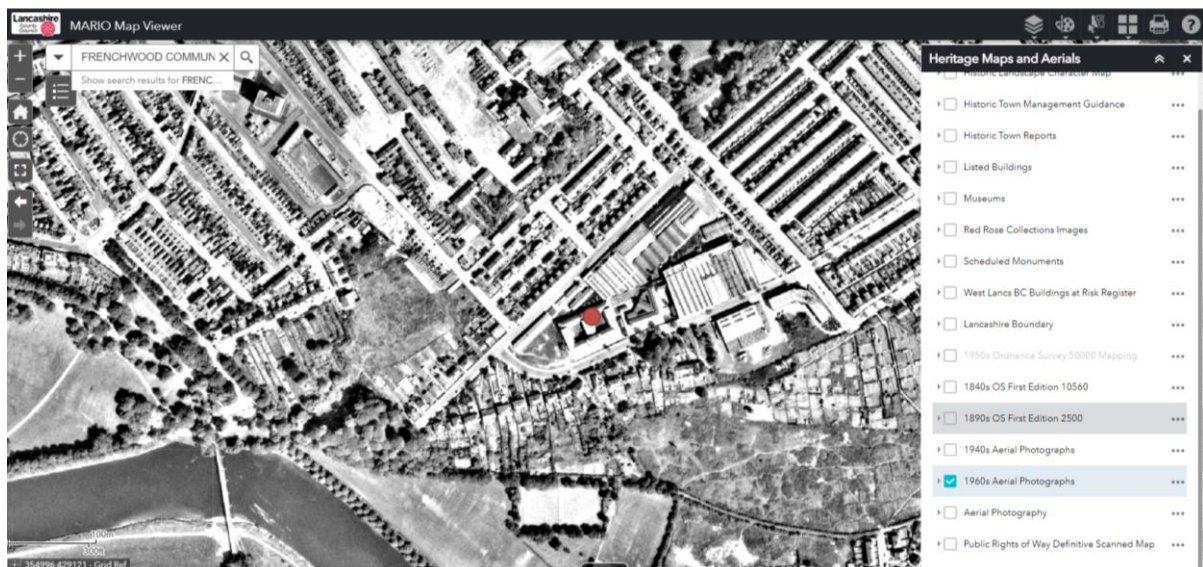
12. Then deselect the overlay and select the other historical map – '1840s OS First Edition 10560' and repeat the above to see what this map looks like and how it overlays with the modern map.



13. You can also select more than one map overlay. Try selecting both historical maps at the same time so they are both highlighted blue. Click on the three dots again and then 'transparency' to overlay the 1840s map with the 1890s one.



14. You can also click on all of the other overlay options and repeat the same process. Below I have selected the '1960s Aerial Photographs' option. Try some of them for yourself.



15. Finally if you would like to view your map 'full screen' simply select on the square target like icon on the left side menu bar. To exit full screen hit the escape button on your keyboard.

