

DOE 22705

( 30th March 1976)

NEW TOWNS ACT 1965

ORDER FOR THE EXTINGUISHMENT OF PUBLIC RIGHTS OF WAY

CENTRAL LANCASHIRE NEW TOWN DEVELOPMENT CORPORATION

BOROUGH OF SOUTH RIBBLE

WHEREAS (1) by virtue of section 23(1) of the New Towns Act 1965 the Secretary of State for the Environment (hereinafter called "the Secretary of State") may by order extinguish any public right of way over land which has been acquired and is for the time being held by a development corporation for the purposes of the New Towns Act 1965;

(2) the Central Lancashire New Town Development Corporation has applied to the Secretary of State for an order extinguishing the public rights of way over the highways described in the Schedule hereto and shown by continuous heavy black lines on the map, being rights of way to which the said Act applies;

(3) the Secretary of State has caused a notice to be published in accordance with the provisions of section 23(2) of the said Act, and five objections to the proposal were made, one of which has been withdrawn.

NOW THEREFORE the Secretary of State in exercise of the powers given to him in that behalf, hereby orders as follows:-

(1). The public rights of way over the highways described in the Schedule hereto and shown by continuous heavy black lines on the map shall be extinguished as from the date of this order.

(2). The expression "the map" means the map prepared in duplicate, signed by a Senior Principal in the Department of the Environment and marked "Map referred to in the Borough of South Ribble (Central Lancashire New Town Development Corporation; Walton Summit, Preston) Rights of Way Order, 1976", one duplicate of which is deposited and available for inspection at the offices of the Central Lancashire New Town Development Corporation and the other at the offices of the Secretary of State.

(3). This order may be cited as the Borough of South Ribble (Central Lancashire New Town Development Corporation: Walton Summit, Preston) Rights of Way Order, 1976.

#### SCHEDULE

1. Footpath 51 starting from a point marked 'A' on the map, near to the intersection of the M6 motorway and the Preston to Blackburn railway line, and extending in a southerly direction for a distance of approximately 170 metres to a point marked 'B' on the map, approximately 20 metres to the east of the M6 motorway.
2. Footpath 50 starting from a point marked 'B' on the map and extending in a southerly direction for a distance of approximately 170 metres to a point marked 'C' on the map, approximately 60 metres to the east of the M6 motorway.
3. Footpath 45 starting from point 'B' and extending in a south-easterly, then a north-easterly, and then a south-easterly direction for a distance of approximately 300 metres to a point marked 'D' on the map near Bradkirk House.
4. Footpath 44 starting from point 'D' and extending in a north-easterly and then an easterly direction for a distance of approximately 220 metres to a point marked 'E' on the map at the southern end of Bradkirk Lane.
5. Footpath 46, known as Bradkirk Lane, starting from point 'E' and extending in a northerly direction for a distance of approximately 175 metres to a point marked 'F' on the map at the level crossing known as the Lion's Den Crossing.
6. Footpath 43 starting from point 'E' and extending in a southerly direction for a distance of approximately 310 metres to a point marked 'G' on the map, approximately midway between Bradkirk Lane and Kellet Lane.

7. Footpath 41 starting from point 'G' and extending in a southerly direction for a distance of approximately 290 metres to a point on Kellet Lane marked 'H' on the map, opposite Pear Tree Cottage.
8. Footpath 42 starting from point 'G' and extending in a north-easterly direction for a distance of approximately 485 metres to a point marked 'J' on the map, approximately 100 metres west of Brindle Road.
9. Footpath 47 starting from point 'G' and extending in a westerly direction for a distance of approximately 30 metres to a point marked 'I' on the map.
10. Footpath 47 starting from point 'P' and extending in a southerly direction for a distance of approximately 75 metres to a point marked 'O' on the map, north of Old Lemmon House.
11. Footpath 47 starting from point 'O' and extending in a north-westerly direction for a distance of approximately 155 metres to a point marked 'K' on the map, approximately 220 metres south-east of point 'G'.
12. Footpath 48 starting from point 'K' and extending in a south-westerly direction for a distance of approximately 330 metres to a point marked 'L' on the map, south of New Lemmon House.
13. Footpath <sup>120</sup>40 starting from point 'L' and extending in a south-westerly direction for a distance of approximately 200 metres to a point on Preston Road marked 'N' on the map.
14. Footpath 49 starting from point 'L' and extending in a south-easterly direction for a distance of approximately 130 metres to a point on Kellet Lane marked 'M' on the map, approximately 30 metres to the east of No.15 Kellet Lane.
15. Footpath 38 starting from a point on Preston Road, marked 'R' on the map approximately 130 metres north-west of Woodside Nurseries, and extending in a north-easterly direction for a distance of approximately 240 metres to a point marked 'Q' on the map, approximately 60 metres north-east of Green Lane Farm.

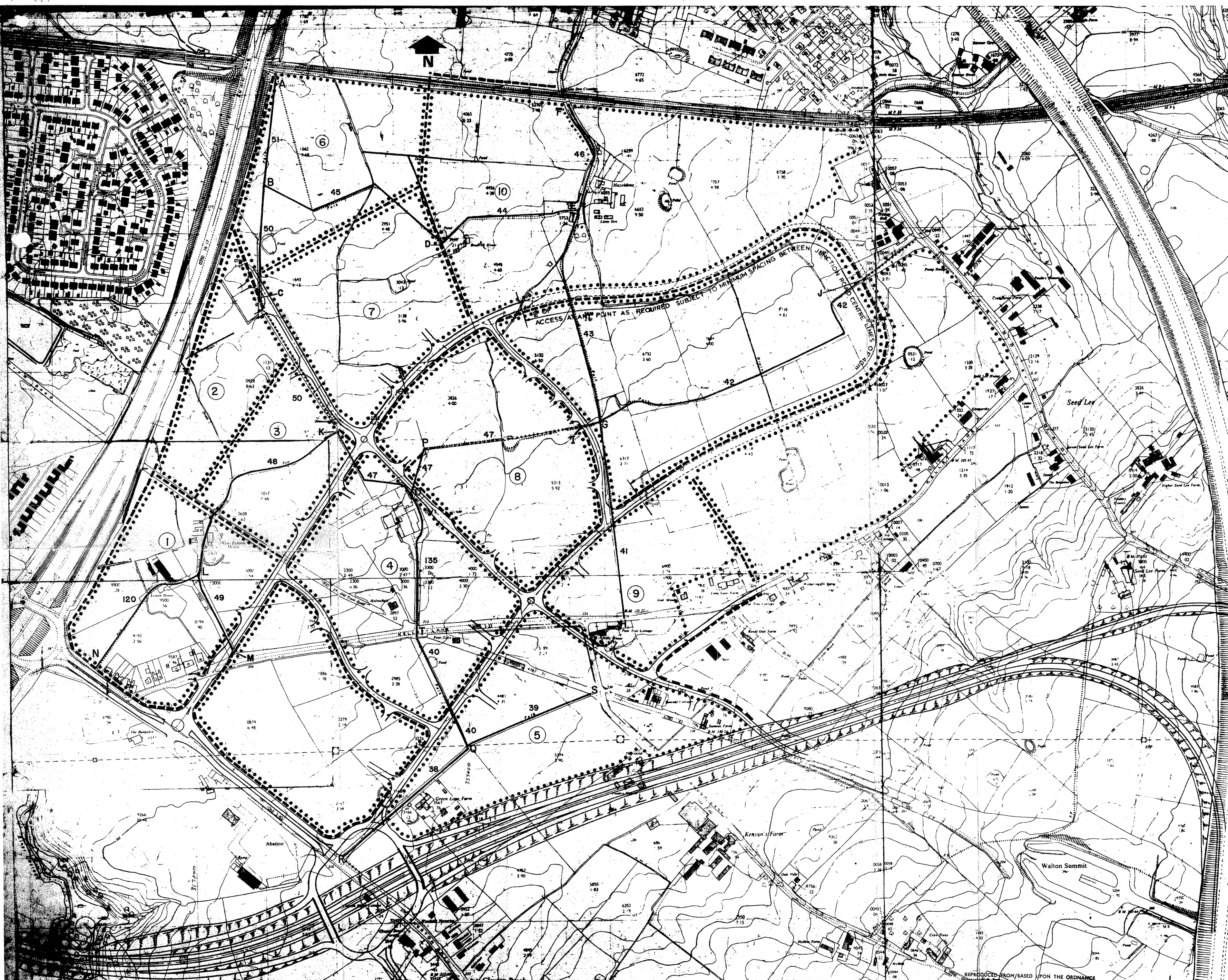
16. Footpath 39 starting from point 'Q' and extending in a north-easterly direction for a distance of approximately 200 metres to a point on Gough Lane marked 'S' on the map, approximately 60 metres west of Summit Cottages.
17. Footpath 40 starting from point 'Q' and extending in a north-westerly direction for a distance of approximately 175 metres to a point on Kellet Lane marked 'T' on the map, to the south-east of Holmefield.
18. Footpath 135 starting from point 'T' and extending in a northerly direction for a distance of approximately 200 metres to the aforementioned point marked 'O' on the map.

*Norman S. F. Palmer*

Signed by authority of  
the Secretary of State.  
30th March 1976

A Senior Principal  
in the Department  
of the Environment.





**KEY**

- Site Boundaries. ....
- Footpaths to be Closed. \_\_\_\_\_
- New Footpaths. - - - - -
- Existing Footpaths retained. ....

F	1-8-74	LINK TO GAS REGULATOR SITE ADDED. LINK TO HOUSING AREA AND ACCESS POSITIONS AMENDED.	J.R.T.
E	4-2-74	MODIFICATIONS TO ROAD ALIGNMENTS & ACCESS POSITIONS	J.R.T.
D	14-1-74	MODIFICATION TO ROAD ALIGNMENT AND MINI ROUNDABOUT ADDED ON A6	J.R.T.
C	4-12-73	MODIFICATIONS TO ROAD ALIGNMENTS AND ACCESS POSITIONS	J.R.T.
B	2 3 73	ALTERATIONS TO ACCESS POSITIONS	N.L.H.
A	2 3 73	ALTERATIONS TO ROAD WIDTHS	N.L.H.
Rev	Date	Description	Sig.

**Central Lancashire Development Corporation**

Job Title  
**WALTON SUMMIT EMPLOYMENT AREA**

Drg Title  
**S. 23 NEW TOWNS ACT 1965 PROPOSED FOOTPATH CLOSURES**

Scale	Date	Drawn	Checked
1:2500	22-1-73	J.R.T. M.P.	J.F.W.
Job No	Drg No.	Rev.	
	6/92/8g		
Contract Drg No		Rev.	