

**ROAD TRAFFIC REGULATION ACT 1984**  
**LANCASHIRE COUNTY COUNCIL**  
**(MOORGATE, MOOR STREET, RAILWAY ROAD AND ST HELENS ROAD,  
ORMSKIRK, WEST LANCASHIRE BOROUGH) (REVOCATION, PROHIBITION OF  
WAITING AND LOADING, RESTRICTION OF LOADING AND GOODS VEHICLE  
LOADING) ORDER 2023**

The County Council of Lancashire ("the Council") in exercise of its powers under Sections 1, 2 and 4 of and Part IV of Schedule 9 to the Road Traffic Regulation Act 1984, as amended ("the Act") and of all other enabling powers, after consultation with the Chief Officer of Police hereby make the following Order: -

**1. Definitions and Interpretations**

For all the purposes of this Order the terms described in this Article shall have the meanings specified:

- a) **"Centreline"** means the centre line of a highway as shown on Ordnance Survey graphical information systems at the time that the Order was prepared;
- b) **"Civil Enforcement Officer"** means a person authorised by or on behalf of Lancashire County Council in accordance with Section 76 of the Traffic Management Act 2004;
- c) **"Disabled Person's Vehicle"** means a Vehicle displaying a Disabled Person's Badge in the circumstances prescribed in Regulations 13, 14, 15 or 16 of The Disabled Persons (Badges for Motor Vehicles) (England) Regulations 2000;
- d) **"Disabled Person's Badge"** means a badge which was -
  - i) issued, or has effect as if issued, to a disabled person or an institution under The Disabled Persons (Badges for Motor Vehicles) (England) Regulations or under regulations having effect in Scotland or Wales under Section 21 of the Chronically Sick and Disabled Persons Act 1970; and
  - ii) has not ceased to be in force.
- e) **"Goods Vehicle"** has the same meaning as in section 192 (1) of the Road Traffic Act 1988;
- f) **"Loading"** and **"Unloading"** means the continuous transference from (or to) a Vehicle to (or from) premises adjacent to where the Vehicle is parked of heavy or unmanageable goods that are not designed to be carried by hand other than over a very short distance;
- g) **"Parking Disc"** means a device which -
  - i) is 125 millimetres square and coloured blue, if issued on or after 1<sup>st</sup> April, 2000 or orange if issued before that date;
  - ii) has been issued by a local authority and has not ceased to be valid; and
  - iii) is capable of showing the quarter hour period during which a period of waiting has begun.
- h) **"Parking Place"** means any length of road subject to restriction in accordance with Article 5;

- i) **“Penalty Charge Notice”** means a notice served by a Civil Enforcement Officer pursuant to the provisions of section 78 of the 2004 Act and supporting regulations.
- j) a Vehicle displays a Disabled Person’s Badge or Parking Disc in the **“Relevant Position”** if –
  - i) the badge/disc is exhibited on the dashboard or fascia of the Vehicle; or
  - ii) where the Vehicle is not fitted with a dashboard or fascia the badge/disc is exhibited in a conspicuous position on the Vehicle, so that the front of the badge/disc is clearly legible from the outside of the Vehicle.
- k) **“The Council’s Duly Authorised Officer”** means a person appointed by the council or its local agent, or authority, to administer the powers conferred on the said Council by the 1984 Act, with respect to this and other Traffic Regulations;
- l) **“Vehicle”** means a motor vehicle, a passenger vehicle, a dual-purpose vehicle, a goods vehicle, a motorcycle or an invalid carriage or any other vehicle of any description whether drawn or propelled along a road by animal or mechanical power.

## **2. Revocations**

- a) Those parts of the "Lancashire County Council (West Lancs Area) (On Street Parking Places, Prohibition and Restriction of Waiting) Consolidation Order 2009", as set out in Schedule 1A to this Order, are hereby revoked.
- b) Those parts of the "Lancashire County Council (Aughton Street, Burscough Street, Church Street and Moor Street, Ormskirk, West Lancashire Borough) (Revocation and Introduction of Prohibition of Waiting and Prohibition of Loading) Order 2017", as set out in Schedule 1B to this Order, are hereby revoked.
- c) Those parts of the "Lancashire County Council (Various Roads, Chorley, Fylde, Hyndburn, Lancaster, Pendle, Preston, Ribble Valley, Rossendale, South Ribble, West Lancashire, Wyre) (Revocations and Various Parking Restrictions 2018 September (No1)) Order 2020", as set out in Schedule 1C to this Order, are hereby revoked.

## **3. Prohibition of Waiting**

Save as is hereinafter provided, no person shall, except upon the direction or with the permission of a police constable in uniform, or a Civil Enforcement Officer, cause or permit any Vehicle to wait at any time, on any day, in the lengths of road set out in the Schedule 2 to this Order.

## **4. Prohibition of Loading and Unloading**

Save as is hereinafter provided, no person shall, except upon the direction or with the permission of a police constable in uniform, or a Civil Enforcement Officer, cause or permit any Vehicle to wait at any time, on any day, for the purposes of Loading or Unloading, in the lengths of road set out in Schedule 3 to this Order.

### **5. Goods Vehicle Loading Bay**

Save as is hereinafter provided, no person shall, except upon the direction or with the permission of a police constable in uniform, or a Civil Enforcement Officer, cause or permit any Vehicle to wait in the Parking Places set out in Schedule 4 to this Order, on any day at any time, unless that Vehicle is a Goods Vehicle and it is engaged in Loading or Unloading.

### **6. Restriction of Loading/Unloading 7pm – Midnight and Midnight – 7am, and 10am – 4pm**

Save as is hereinafter provided, no person shall, except upon the direction or with the permission of a police constable in uniform, or a Civil Enforcement Officer, cause or permit any Vehicle to wait between 7pm – midnight and midnight and 7am, and 10am – 4pm, for the purposes of Loading or Unloading, in the length of road set out in Schedule 5 to this Order.

### **7. General Exemptions**

Nothing in Articles 3, 4, 5 and 6 of this Order shall render it unlawful to cause or permit any Vehicle to wait in the lengths of road referred to therein for so long as may be necessary to enable :-

- a) a person to board or alight from the Vehicle;
- b) if it cannot conveniently be used for such purpose in any other road to be used in connection with any of the following:-
  - i) building, industrial or demolition operations;
  - ii) the removal of any obstruction to traffic;
  - iii) the maintenance, improvement or reconstruction of the said lengths of road;
  - iv) the laying, erection, alteration or repair in, or in land adjacent to the said lengths of road of any sewer or of any main, pipe or apparatus or the exercise of any other statutory power or duty for the maintenance and supply of gas, water or electricity or of any telecommunications system as defined in Section 4 of the Telecommunications Act 1984.
- c) the Vehicle to be used for the purposes of a local authority in pursuance of statutory powers or duties if it cannot conveniently be used for such purpose in any other road;
- d) the Vehicle to be used for fire brigade, ambulance or police purposes in pursuance of statutory powers or duties.

### **8. Exemptions to Article 3**

Nothing in Article 3 of this Order shall render it unlawful to cause or permit any Vehicle to wait in the lengths of road referred to therein for so long as may be necessary to enable :-

- a) goods to be loaded onto or unloaded from the Vehicle;
- b) a Royal Mail liveried Vehicle engaged in the collection and/or delivery of letters in accordance with the statutory provisions as defined in the Postal Services Act 2000;



- c) the Vehicle to wait at or near to any premises situated on or adjacent to the said length of road for so long as such waiting by the Vehicle is reasonably necessary in connection with any wedding or funeral.

#### **9. Exemption for Disabled Person's Vehicle**

Nothing in Article 3 of this Order shall render it unlawful to cause or permit any Vehicle to wait in the lengths of road referred to therein for a period not exceeding three hours (not being a period separated by an interval of less than one hour from a previous period of waiting by the same Vehicle in the same length of road on the same day) if the Vehicle is a Disabled Person's Vehicle which displays in the Relevant Position both a Disabled Person's Badge and a Parking Disc marked to show the quarter hour period during which the period of waiting began.

#### **10. Additional Exemptions**

Nothing in Articles 3, 4, 5 and 6 of this Order shall render it unlawful to cause or permit any Vehicle to wait, in the lengths of road referred to therein when the person in control of the Vehicle:

- a) is required by law to stop;
- b) is obliged to stop in order to avoid an accident; or
- c) is prevented from proceeding along the road due to circumstances beyond his/her control.

#### **11. Manner of standing in a Parking Place**

- a) The driver of a motor Vehicle using a Parking Place shall stop the engine as soon as the Vehicle is in a position in the Parking Place and shall not start the engine except when about to change the position of the Vehicle in or, or depart from, the Parking Place.
- b) Every Vehicle left in a Parking Place in accordance with the foregoing provisions of this Order shall be left so that every part of the Vehicle is within the limits of the Parking Place.
- c) A driver of a Vehicle shall not use a Parking Place so as unreasonably to prevent access to any premises adjoining a road or the use of a road by other persons or so as to be a nuisance.

#### **12. Alteration of position of a Vehicle in a Parking Place**

Where any Vehicle is left standing in a Parking Place in contravention of the provisions of Article 11 of this Order, a police constable in uniform or a Civil Enforcement Officer may alter or cause to be altered the position of the Vehicle in order that its position shall comply with those provisions.

#### **13. Removal of a Vehicle from a Parking Place**

Where a police constable in uniform or a Civil Enforcement Officer is of the opinion that any of the provisions contained in Article 11 of this Order have been contravened or not complied with in respect of a Vehicle left in a Parking Place, he/she may remove or cause to be removed the Vehicle from the said Parking Place, and where it is so removed, shall provide for the safe custody of the said Vehicle.

#### **14. Movement of a Vehicle in a Parking Place in an Emergency**

- a) A police constable in uniform or a Civil Enforcement Officer may in case of emergency move or cause to be moved any Vehicle left in a Parking Place to any place he thinks fit and shall provide for the safe custody of the Vehicle.
- b) A person causing or permitting a Vehicle to wait in a Parking Place by virtue of the provisions of this Order shall take all such steps as are necessary to ensure that in the case of a Parking Place it shall stand in accordance with Article 11 so that every part of the Vehicle is within the limits of the Parking Place.

#### **15. Power to suspend use of Parking Places**

- a) The Council's Duly Authorised officer may suspend the use of a Parking Place or any part thereof whenever he/she considers such suspensions reasonably necessary and make such charge for the administration of this service, as may from time to time be determined by the Council.
- b) A police constable in uniform may suspend for not longer than 7 days the use of a Parking Place or any part thereof whenever he/she considers such suspension reasonably necessary for the purpose of mitigating congestion or obstruction of traffic or a danger to or from traffic in consequence of extraordinary circumstances.
- c) Any persons suspending the use of a Parking Place or any part thereof in accordance with the provisions of paragraph a) or b) of this Article shall thereupon place or cause to be placed in or adjacent to any part of that Parking Place the use of which is suspended, an authorised Traffic Sign or cone indicating that waiting by Vehicles is prohibited.
- d) No person shall cause or permit a Vehicle to be left in any part of a Parking Place during such period when an authorised Traffic Sign or cone is placed in or adjacent to that part of the Parking Place pursuant to paragraph c) of this Article provided that this paragraph shall not apply to a Vehicle:
  - i) being used by the respective Fire or Police Authority or Ambulance Health Trust to deal with an emergency; or
  - ii) being used for any purpose specified in Article 10; or
  - iii) left in such Parking Place with the permission of the person suspending the use of the Parking Place.

#### **16. Restriction of use of a Vehicle in a Parking Place**

While any Vehicle is in the lengths of road set out in the schedule to this Order no person shall use the said Vehicle in connection with the sale of any article to any person in or near the Parking Place or in connection with the selling of or offering for sale of his/her skills or services.

#### **17. Miscellaneous**

The Restriction imposed by this Order shall be in addition to and not in derogation of any restrictions or requirements imposed by any regulations made, or having effect as if made, under the Act or by or under any other enactment.

**18. Effect of Contravention**

Failure by a person to comply with any prohibition or restriction contained within this order or any subsequent orders shall constitute a contravention of the same and shall result in the issue by the Council and/or its agents of a Penalty Charge Notice which shall be payable by such persons in accordance with the legislation.

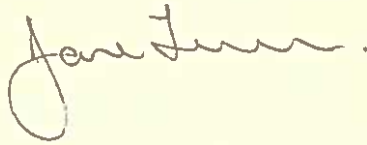
**19. Commencement of Order**

This Order shall come into force on the 04<sup>th</sup> day of September 2023 and may be cited as the "Lancashire County Council (Moorgate, Moor Street, Railway Road And St Helens Road, Ormskirk, West Lancashire Borough) (Revocation, Prohibition Of Waiting And Loading, Restriction Of Loading And Goods Vehicle Loading) Order 2023".

Dated this 23<sup>rd</sup> day of August 2023.

THE COMMON SEAL of the Lancashire County Council was hereunto affixed pursuant to the Scheme of Delegation to Chief Officers.

Authorised Signatory



31534



### **Schedule 1A – Revocation**

- a) Items (123)b)(ii), (123)c)(i), (124)e)(iii), (150)a), (150)b)(ii), (182)a), (182)b) and (183)a) of Schedule 10.01.
- b) Item (5)a) of Schedule 12.093.

### **Schedule 1B – Revocation**

- a) Item d) of Schedule 1.
- b) Item d) of Schedule 2.

### **Schedule 1C - Revocation**

Item ee) of Schedule 2.

### **Schedule 2 – Prohibition of Waiting**

- a) Moor Street, Ormskirk, all sides, from its Centreline junction with Aughton Street/Burscough Street/Church Street to a point 7.5 metres west of its Centreline junction with Moorgate.
- b) Moor Street, Ormskirk, the north side, from a point 42 metres west of its junction with the Centreline of Stanley Street in a westerly direction, to its junction with Moor Street/Railway Road.
- c) Moor Street, Ormskirk, the north side, from a point 7.5 metres west of its Centreline junction with Moorgate for a distance of 20 metres in an easterly direction.
- d) Moor Street, Ormskirk, the north side, from a point 48 metres east of its Centreline junction with Moorgate in an easterly direction to its Centreline junction with Railway Road.
- e) Moor Street, Ormskirk, the south side, from a point 42 metres west of its junction with the Centreline of Knowsley Road in a westerly direction, to a point 17 metres west of its junction with the Centreline of St Helens Road.
- f) Moor Street, Ormskirk, the south side, from its Centreline junction with Moorgate in an easterly direction to its Centreline junction with Railway Road.
- g) Moor Street, Ormskirk, the south side, from a point 33 metres west of its junction with the Centreline of St. Helens Road in a westerly direction, to its Centreline junction with Moor Street/Railway Road.
- h) Moorgate, Ormskirk, both sides, from a point 33 metres north of its junction with the Centreline of Market Way to its Centreline junction with Moor Street.
- i) Moorgate, Ormskirk, the west side, from a point 33 metres north of its junction with the Centreline of Market Way in a southerly direction to its junction with the Centreline of Bridge Street.
- j) Railway Road, Ormskirk, both sides, from its Centreline junction with Moor Street for a distance of 11 metres in a northerly direction.
- k) Railway Road, Ormskirk, the east side, from a point 11 metres north of its Centreline junction with Moor Street in a northerly direction to its Centreline junction with Derby Street.
- l) Railway Road, Ormskirk, the west side, from a point 11 metres north of its Centreline junction with Moor Street in a northerly direction to its Centreline junction with Leyland Way.
- m) St Helens Road, Ormskirk, both sides, from a point 72 metres south of its junction with the Centreline of Moor Street in a southerly direction, to its junction with the Centreline of Park Road.
- n) St Helens Road, Ormskirk, the east side, from its Centreline junction with Park Road, in a southerly direction to a point 30 metres south of its Centreline junction with Ruff Lane.
- o) St Helens Road, Ormskirk, the east side, from its junction with the Centreline of Moor Street for a distance of 28.5 metres in a southerly direction.
- p) St Helens Road, Ormskirk, the east side, from a point 34.5 metres south of its junction with the Centreline of Moor Street for a distance of 3.5 metres in a southerly direction.
- q) St Helens Road, Ormskirk, the east side, from a point 44 metres south of its junction with the Centreline of Moor Street for distance of 28 metres in a southerly direction.
- r) St Helens Road, Ormskirk, the west side, from its junction with the Centreline of Moor Street for a distance of 72 metres in a southerly direction.

### **Schedule 3 – Prohibition of Loading and Unloading**

- a) Moor Street, Ormskirk, the north side, from a point 42 metres west of its junction with the Centreline of Stanley Street in a westerly direction, to its junction with Moor Street/Railway Road.
- b) Moor Street, Ormskirk, the north side, from a point 7.5 metres west of its Centreline junction with Moorgate for a distance of 20 metres in an easterly direction.
- c) Moor Street, Ormskirk, the north side, from a point 48 metres east of its Centreline junction with Moorgate in an easterly direction to its Centreline junction with Railway Road.
- d) Moor Street, Ormskirk, the south side, from a point 42 metres west of its junction with the Centreline of Knowsley Road in a westerly direction, to a point 17 metres west of its junction with the Centreline of St Helens Road.
- e) Moor Street, Ormskirk, the south side, from its Centreline junction with Moorgate in an easterly direction to its Centreline junction with Railway Road.
- f) Moor Street, Ormskirk, the south side, from a point 33 metres west of its junction with the Centreline of St. Helens Road in a westerly direction, to its Centreline junction with Moor Street/Railway Road.
- g) Moorgate, Ormskirk, both sides, from a point 33 metres north of its junction with the Centreline of Market Way to its Centreline junction with Moor Street.
- h) Railway Road, Ormskirk, both sides, from its Centreline junction with Moor Street for a distance of 11 metres in a northerly direction.
- i) St Helens Road, Ormskirk, the east side, from its junction with the Centreline of Moor Street for a distance of 28.5 metres in a southerly direction.
- j) St Helens Road, Ormskirk, the east side, from a point 34.5 metres south of its junction with the Centreline of Moor Street for a distance of 3.5 metres in a southerly direction.
- k) St Helens Road, Ormskirk, the east side, from a point 44 metres south of its junction with the Centreline of Moor Street for a distance of 28 metres in a southerly direction.
- l) St Helens Road, Ormskirk, the west side, from its junction with the Centreline of Moor Street for a distance of 72 in a southerly direction.

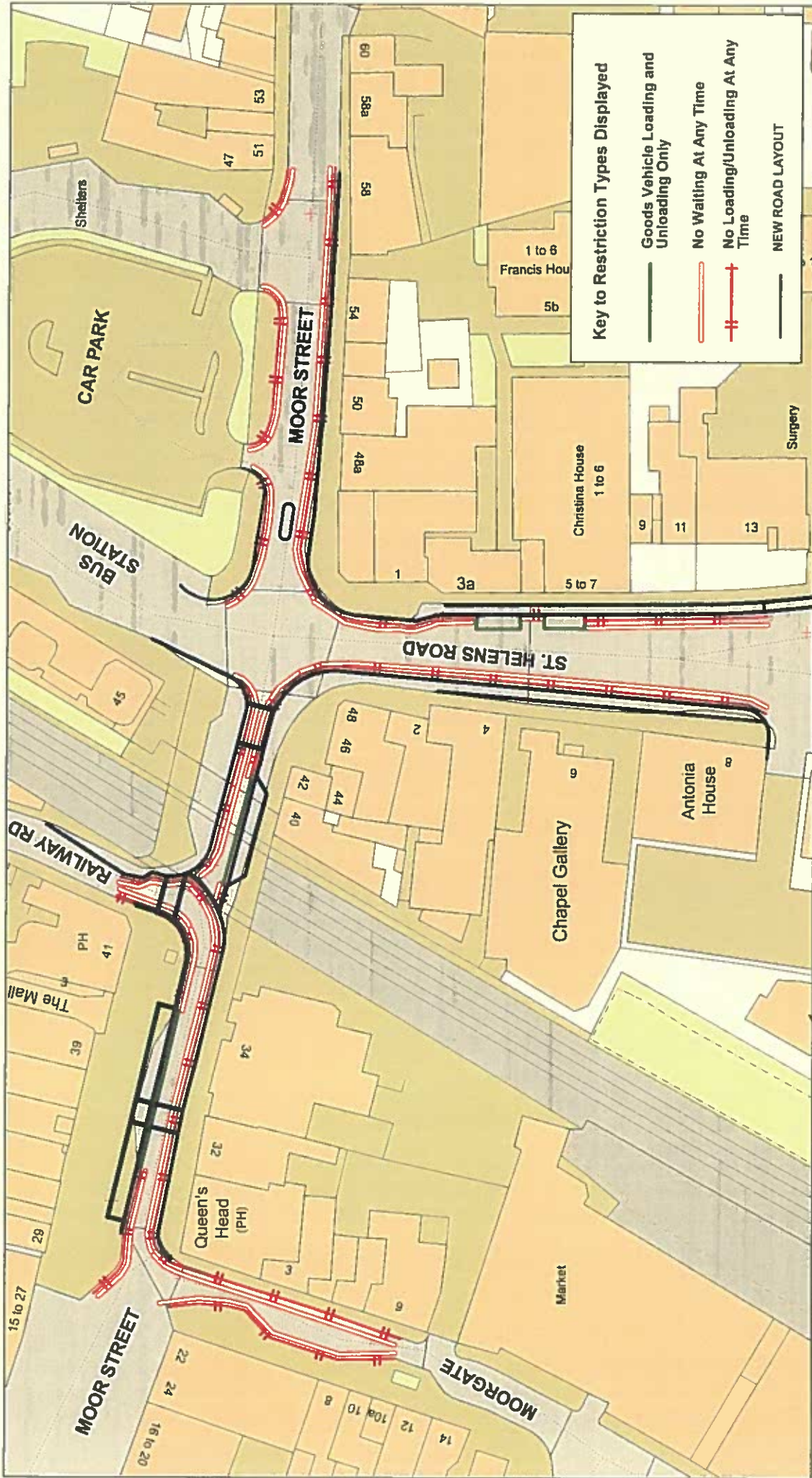
### **Schedule 4 – Goods Vehicle Loading Bay**

- a) Moor Street, Ormskirk, the north side, from a point 27.5 metres east of its Centreline junction with Moorgate for a distance of 20.5 metres in an easterly direction.
- b) Moor Street, Ormskirk, the south side, from a point 17 metres west of its junction with the Centreline of St. Helens Road for a distance of 16 metres in a westerly direction.
- c) St Helens Road, Ormskirk, the east side, from a point 38 metres south of its junction with the Centreline of Moor Street for a distance of 6 metres in a southerly direction.
- d) St Helens Road, Ormskirk, the east side, from a point 28.5 metres south of its junction with the Centreline of Moor Street for a distance of 6 metres in a southerly direction.

### **Schedule 5 – Restriction of Loading/Unloading 7pm – Midnight and Midnight – 7am, and 10am – 4pm**

Moor Street, Ormskirk, all sides, from its Centreline junction with Aughton Street/Burscough Street/Church Street to a point 7.5 metres west of its Centreline junction with Moorgate.





SCALE	1 : 750
DATE	28/05/2021
DRAWING No.	RPZ-OEG
DRAWN BY	TJP
Scale with care as distortion may occur	

© Crown copyright. All rights reserved  
 Lancashire County Council  
 Licence No. 100019820 2021

**Phil Durnell**  
 Director of Highways  
 and Transportation  
 P.O. Box 100, County Hall,  
 PRESTON PR1 0LD

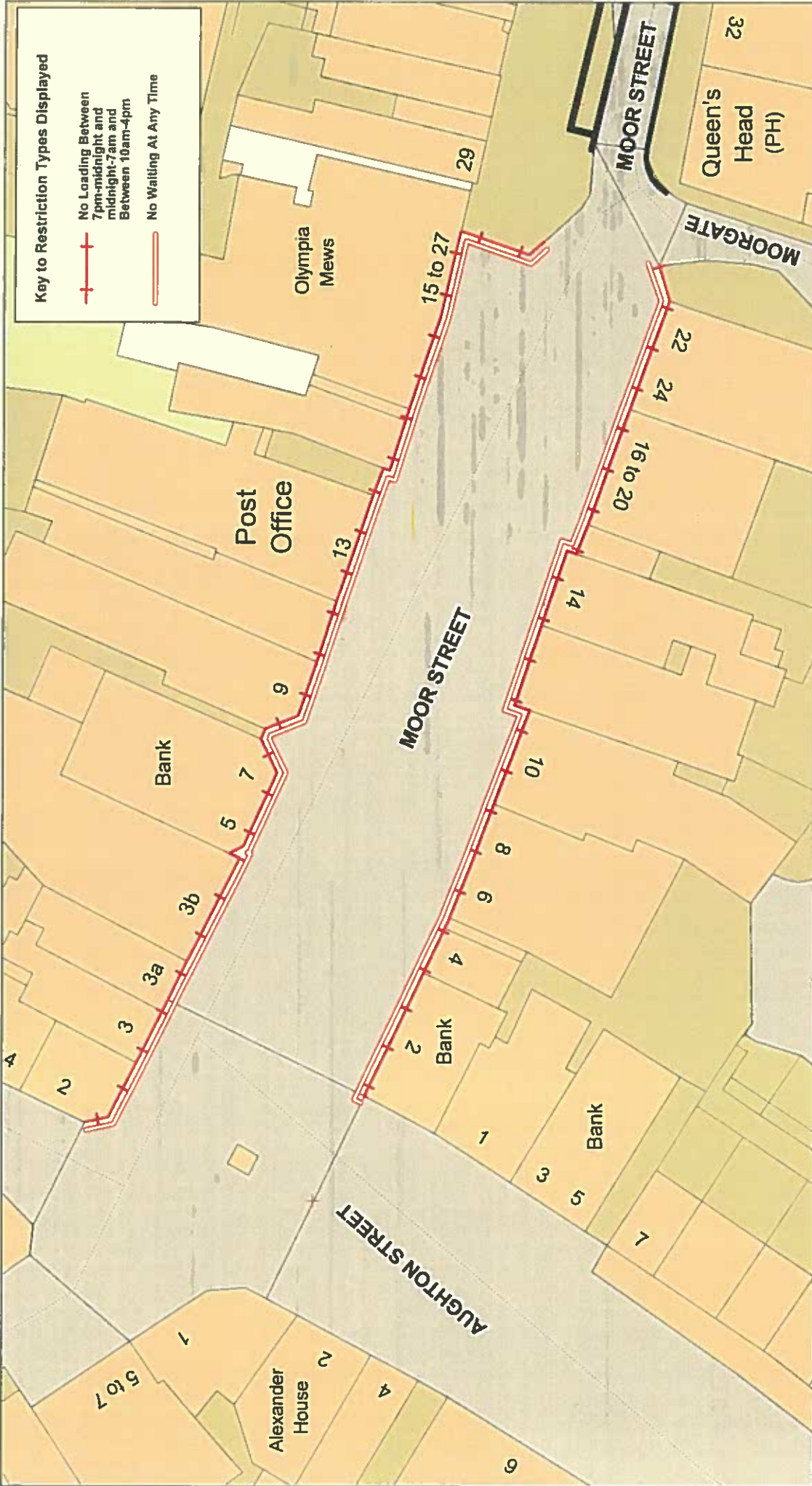
**RESTRICTED PARKING ZONE**  
 No Waiting and No Loading at Any Time  
 except in Signed Bays

Moor Street; Moorgate;  
 Railway Road; St. Helens Road,  
 Ormskirk

**Lancashire**  
 County Council

ParkMap Version 7.3

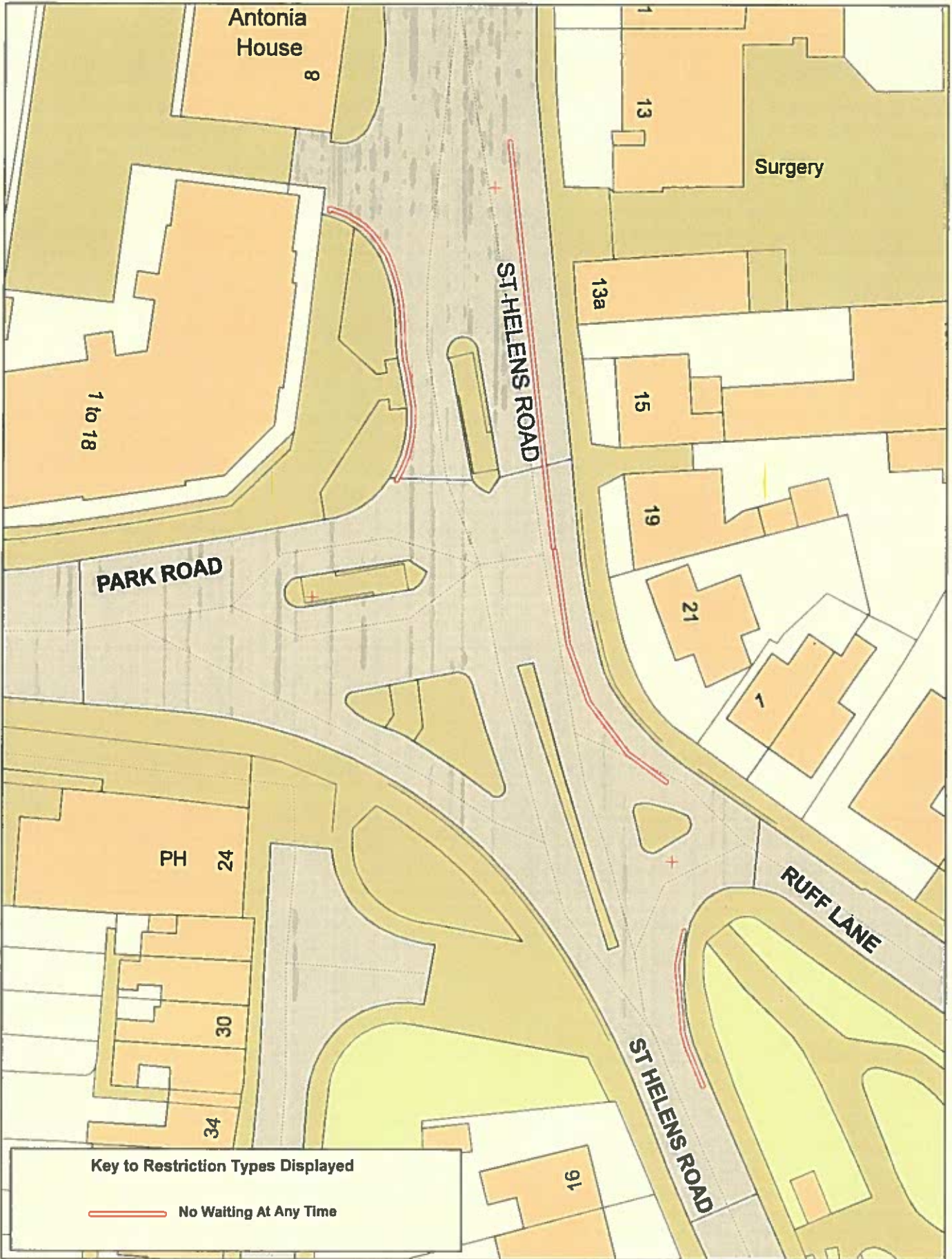




SCALE	1 : 500
DATE	17/05/2021
DRAWING No.	RPZ-OEG-2
DRAWN BY	TJP
Scale with care as distortion may occur	

© Crown copyright. All rights reserved  
Lancashire County Council  
Licence No. 100019820 2021





**Key to Restriction Types Displayed**

 No Waiting At Any Time



**St. Helens Road, Ormskirk**

confirming existing restrictions with reduced length due to proposed Restricted Zone



© Crown copyright. All rights reserved  
Lancashire County Council  
Licence No. 100018833 2021

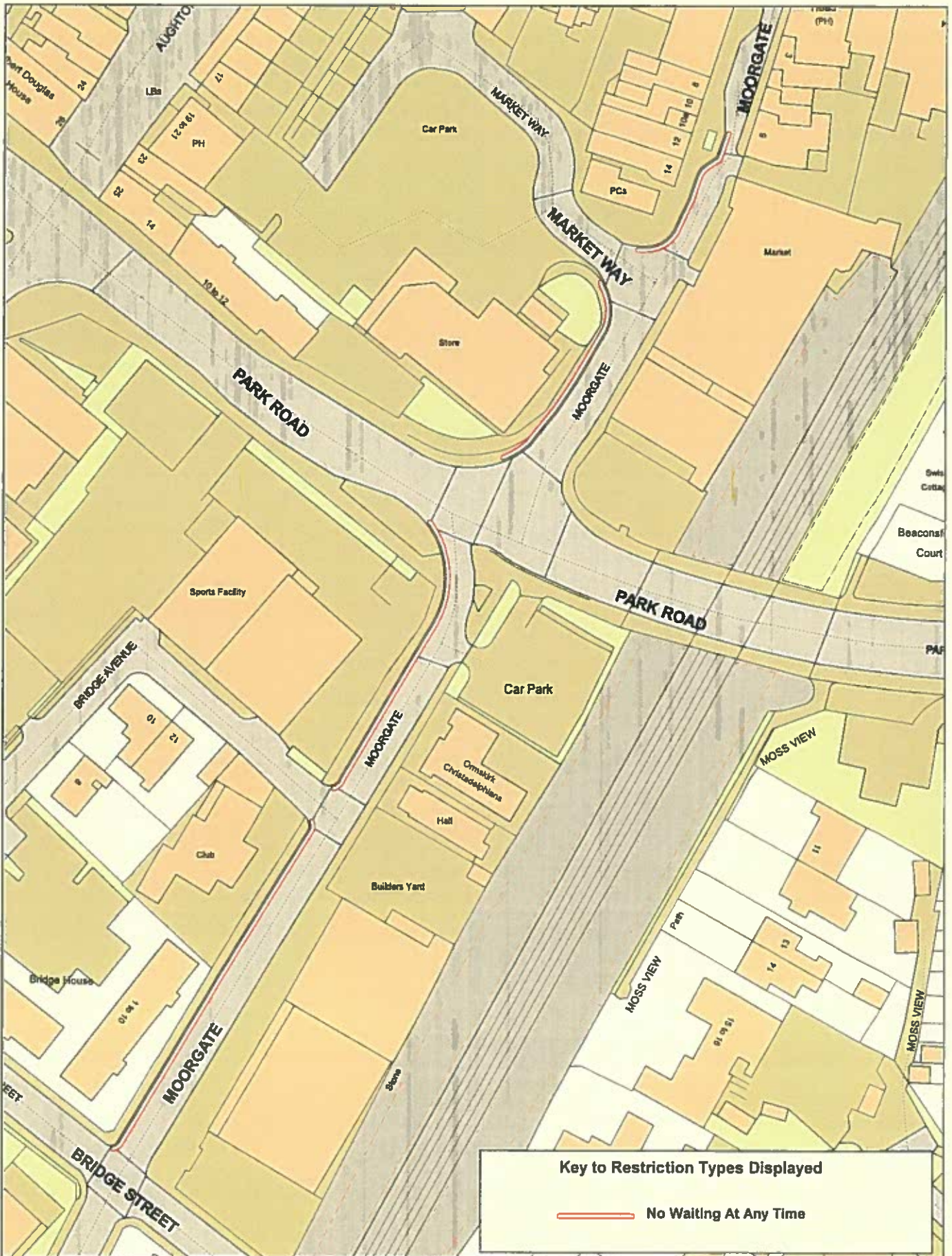
**Phil Durnell**  
Director of Highways and Transportation

P.O. Box 100, County Hall,  
PRESTON PR1 0LD


SCALE	<b>1 : 500</b>
DATE	<b>23/08/2021</b>
DRAWING No	<b>RPZ-OEG-3</b>
DRAWN BY	<b>TJP</b>

Scale with care as distortion may occur





**Key to Restriction Types Displayed**

 No Waiting At Any Time



**Moorgate, Ormskirk**  
 confirming existing restrictions  
 with reduced length  
 due to proposed  
 Restricted Zone

© Crown copyright. All rights reserved  
 Lancashire County Council  
 Licence No. 100019820 2021

**Phil Durnell**  
 Director of Highways  
 and Transportation



P.O. Box 100, County Hall,  
 PRESTON PR1 6LD

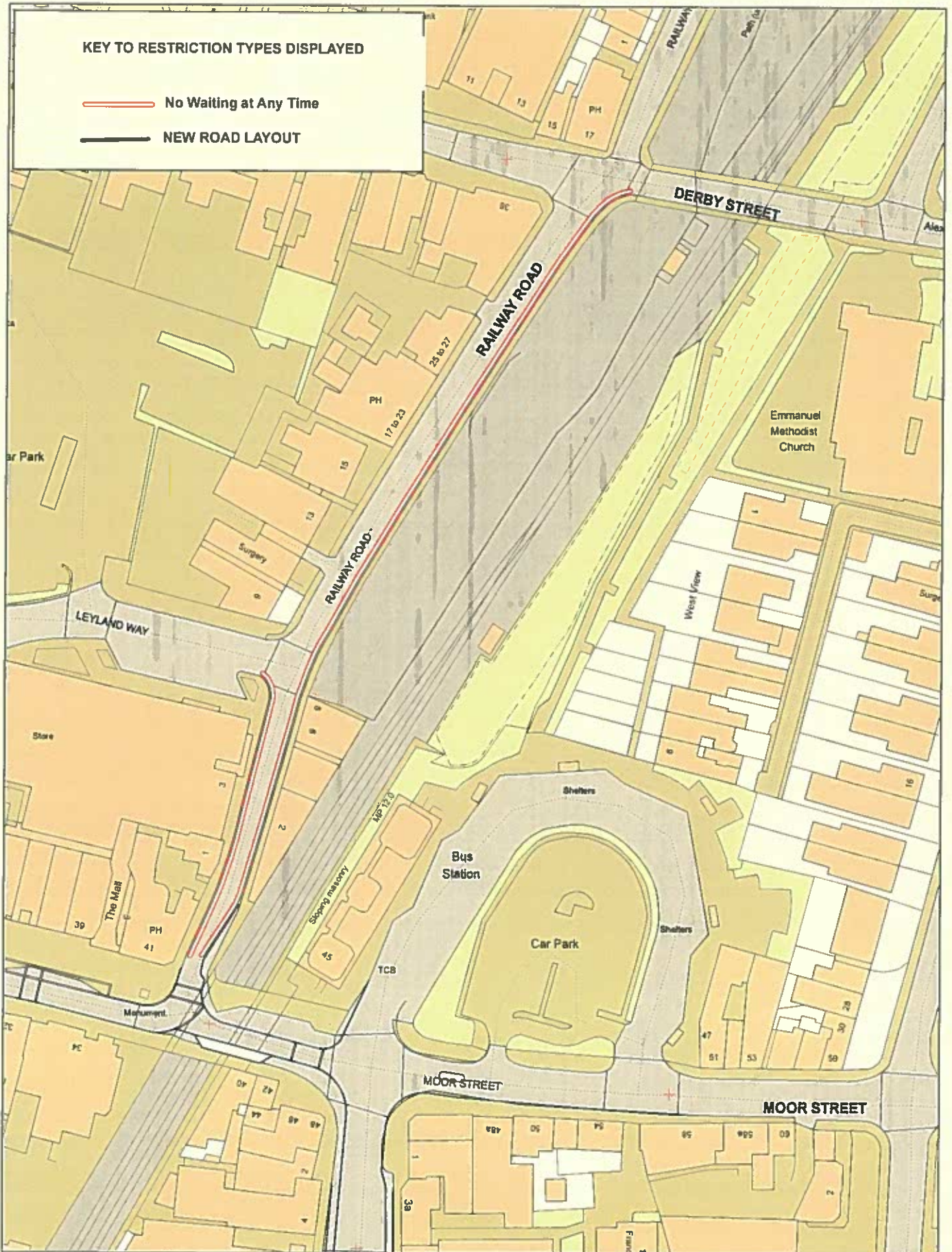
SCALE	<b>1 : 1000</b>
DATE	<b>24/08/2021</b>
DRAWING No.	<b>RPZ-OEG-4</b>
DRAWN BY	<b>TJP</b>
	Scale with care as distortion may occur





**KEY TO RESTRICTION TYPES DISPLAYED**

-  No Waiting at Any Time
-  NEW ROAD LAYOUT



**Railway Road, Ormskirk**

confirming existing restrictions  
with reduced length  
due to proposed  
Restricted Zone



© Crown copyright. All rights reserved  
Lancashire County Council  
Licence No. 100019420 2021

**Phil Durnell**  
Director of Highways  
and Transportation

P.O. Box 100, County Hall,  
PRESTON PR1 0LD

SCALE **1 : 1000**

DATE **24/08/2021**

DRAWING No. **RPZ-OEG-5**

DRAWN BY **TJP**

Scale with care as  
distortion may occur