

Lancashire County Council

Childcare Sufficiency Assessment

April 2023 - March 2024

Chorley



Contents

Introduction	Page 2
Lancashire Overview	Page 3-4
Local Demographics	Page 5
Parent Survey	Page 6-8
Childcare Provision	Page 9-10
Movement in the Market	Page 11
Childcare Places	Page 12-13
Early Education Funding	Page 14-15
Accessibility of Childcare	Page 16-17
Childcare Fees	Page 18
Quality of Provision	Page 19
Provision for Children with Special Educational Needs and/or Disabilities (SEND)	Page 20
Business and Finance	Page 21
Key Findings Actions & Conclusion	Page 22



Introduction

The Childcare Act 2006 places a statutory duty upon local authorities to secure sufficient childcare, so far as is reasonably practicable, for working parents or parents who are studying or training for employment, for children aged 0-14 or up to 18 for disabled children.

The Childcare Sufficiency Assessment (CSA) is a county wide review of the supply and demand of childcare, take up of funded provision, the availability of places, the quality and cost of provision. The information has been broken down into area reports for ease of reading, this provides the reader with an overview at a localised level.

Methodology

In order to gather up to date, accurate childcare supply data, we carried out an online survey with childcare providers. We also surveyed a sample of parents throughout Lancashire to ascertain demand including childcare needs, opinions and trends. As it is not possible to include data for all parents and providers in Lancashire, the information in this report should be seen as a guide to local provision, rather than being conclusive. It is also important to note that any figures represent a snapshot in time. Some tables will have blank cells as we may not have all provider types in each area, or the data has not been supplied by the providers. Caution should be given where there is only one provider type in that group. Data from the termly census and headcount claims is used to map the take up of funded childcare places and Ofsted data is used to identify the quality of childcare in Lancashire.

Types of Childcare

Childcare includes Childminders, Day Nurseries, Pre-Schools, Nursery Units of Independent Schools, Breakfast Clubs, After School Clubs, Holiday Schemes, Maintained Nursery Classes, Maintained Nursery Schools, and School Governor Led Provision (section 27).

Registered Childcare: Ofsted is the Office for Standards in Education, Children's Services and Skills. It regulates childcare for children from birth to 18 years of age. Ofsted operates two registers:

The Early Years Register: If a provider is caring for children from the age of birth to 5 years for more than two hours a day, on more than fourteen days per year they must register with Ofsted on the Early Years Register and meet the requirements of the Early Years Foundation Stage.

The Childcare Register: A childcare provider must register on the compulsory part of the Childcare Register if they provide care for children aged 5 to 8 years for more than two hours a day on more than fourteen days per year. A childcare provider will be on both the Early Years Register and the Childcare Register if they care for children under and over the age of 5 years. Some childcare providers who care for children over the age of 8 years, who provide care in the child's home, are activity based i.e., sports coaching or for very short periods of time can join the voluntary part of the childcare register.

Schools

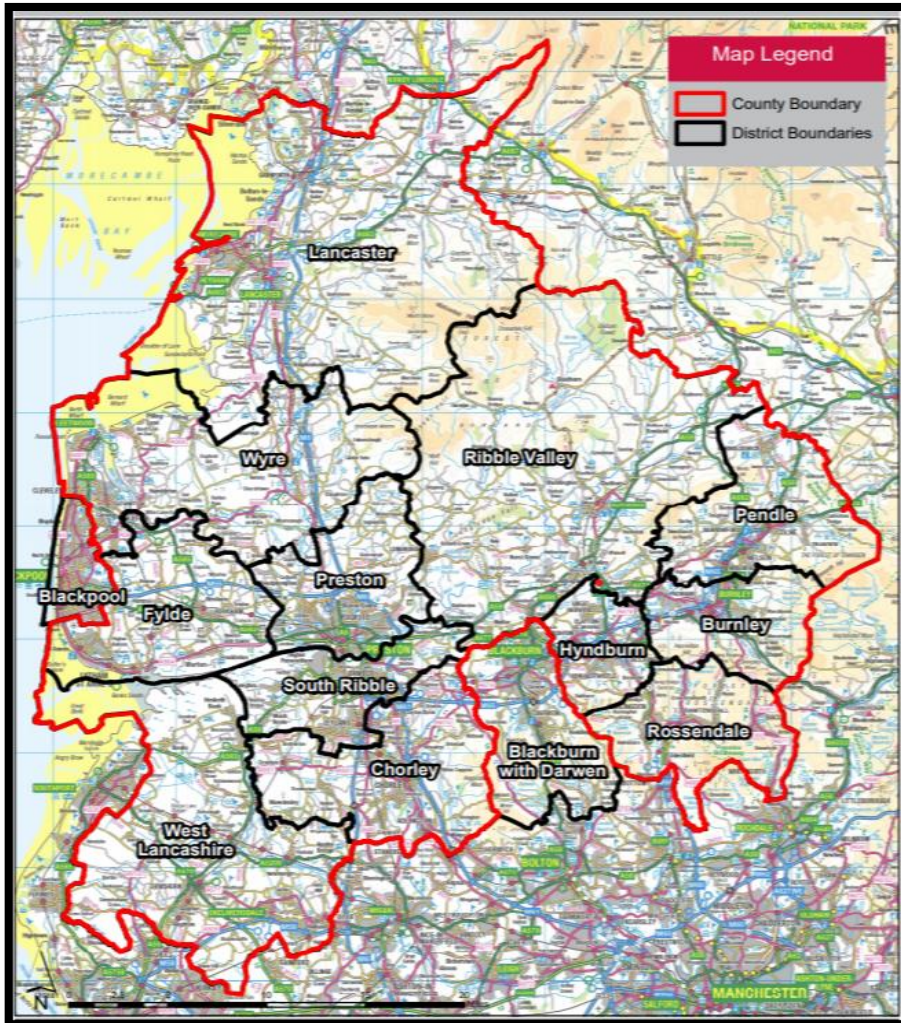
Maintained Nursery Classes and Governor Led Provision (section 27) are included within an overall school inspection and are not required to have a separate Early Years Ofsted registration; however, they must follow the Early Years Foundation Stage (EYFS) Statutory Framework.



Lancashire Overview

Lancashire County Council is the fourth largest County Council in the country. The population is 1,227,076. The population for 0-19 year olds within this figure is 281,290. Lancashire is made up of 12 districts. Below you can see a map of Lancashire showing the county and district boundaries.

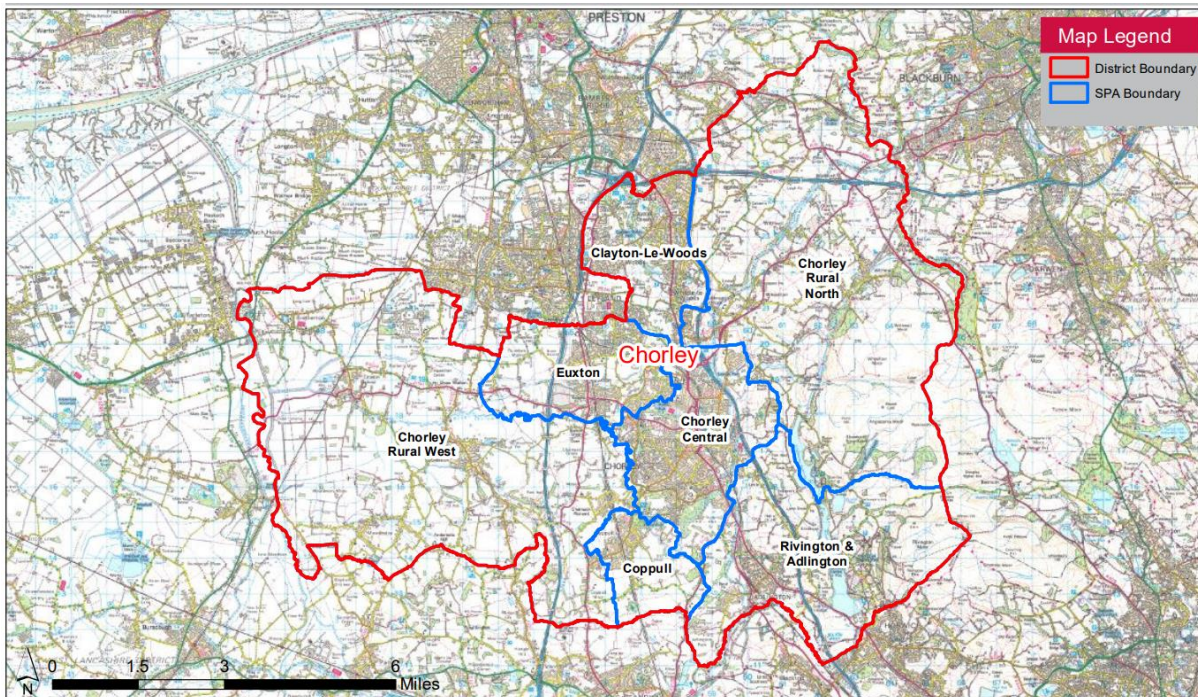
Lancashire's defining characteristics are its size and diversity. Each district has its own unique demography and geography. It is an area of vast contrasts with busy urban centres, coastal regions and large agricultural areas. For the purposes of this report these districts have been broken down further into localised geographical areas.



Chorley

The map below shows the local geographical areas for the Chorley district, these include.

- Chorley Central
- Chorley Rural North
- Chorley Rural West
- Clayton-Le-Woods
- Coppull
- Euxton
- Rivington and Adlington



Local Demographics

Chorley is a district in central Lancashire, it covers 203 square kilometres and the number of people per km² is similar to the North West average.

Over recent years the population has risen from 97,000 in 1991 to 118,870 in 2020. It is estimated that between 2018 and 2043 the population of Chorley will increase by 17.8%, the highest growth rate in Lancashire. It is also predicted the number of households will increase by 24.4% between 2018 and 2043.

The table below you can see the population figures for the district.

Area	Total Population	0-1 year olds	1 year olds	2 year olds	3&4 year olds	5-11 year olds
Chorley Central	37757	386	443	422	927	3389
Chorley Rural North	8731	52	65	67	154	605
Chorley Rural West	17042	104	100	114	268	1195
Clayton-Le-Woods	21404	204	232	214	531	1880
Coppull	6967	65	61	74	168	598
Euxton	16590	184	185	198	445	1614
Rivington & Adlington	10379	96	98	85	219	812
Chorley	118870	1091	1184	1174	2712	10093

The 2019 Indices of Multiple Deprivation (IMD) shows that Chorley was ranked the 193rd most deprived area out of 317 districts and unitary authorities in England.

Area	No. of wards	No. of LSOA's	IMD average rank *	IMD in 20% most deprived
Chorley	14	70	193	No

Chorley is part of Central Lancashire it has good transport links with the M61 and M65 providing access to the major motorways. Public transport can be easily accessed with railway stations and bus routes providing families with options for commuting throughout the district and beyond.



Parent Survey

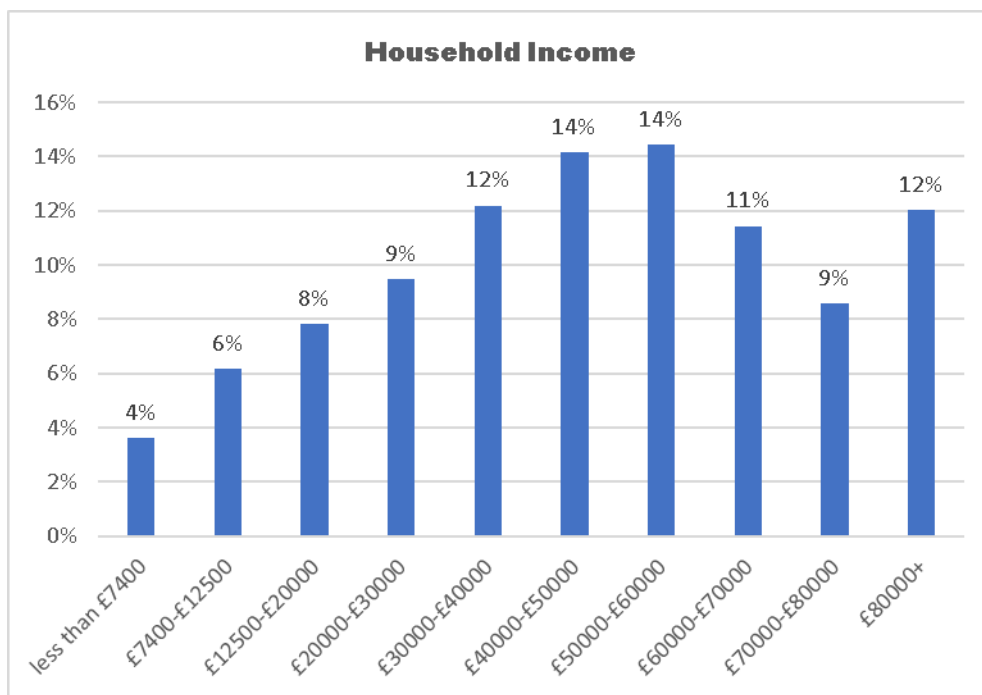
As part of our statutory duty, we gathered the views of parents and families that use formal childcare. Using the help of our early year's providers, parents were asked to complete a short online survey. Questions in the survey covered topics such as current childcare usage patterns, opening times, paying for childcare, satisfaction levels, Early Education Funding (EEF).

There were 664 completions in total. Whilst the majority of responses were from Preston, Chorley, Lancaster and South Ribble we did receive submissions from all 12 districts. The summary below is provided at a Lancashire level.

Your Household

Nearly all respondents to our survey are married or living with a partner, in most cases both partners are working full time. The majority of those surveyed have children aged 0-4 years. The most used childcare provider types are After School Club and Day Nursery.

We asked parents about their household income, this is displayed in the graph below.



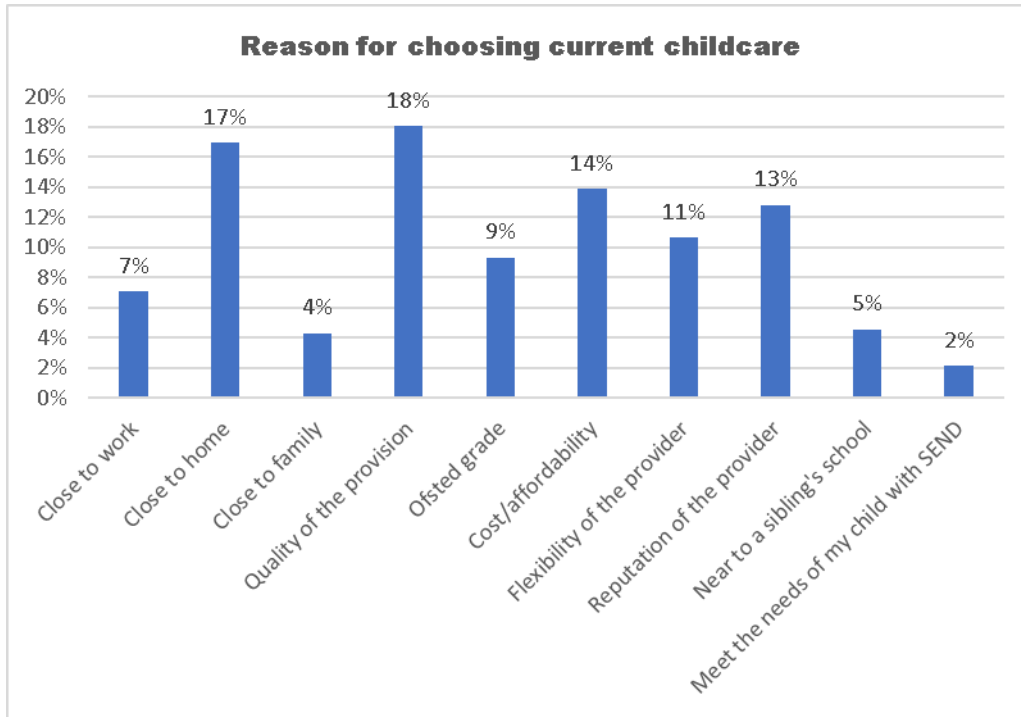
Childcare Needs

On average most parents/carers need between 10 and 30 hours of childcare per week. Nearly half of the responses received said they use childcare because they work, 23% told us it is also for their child's learning and development and a small percentage state they use childcare for respite and to look for work. 5% of parents/carers access childcare solely to use their child's Early Education Funding. A small number of parents need childcare after 6pm or other patterns not specified.

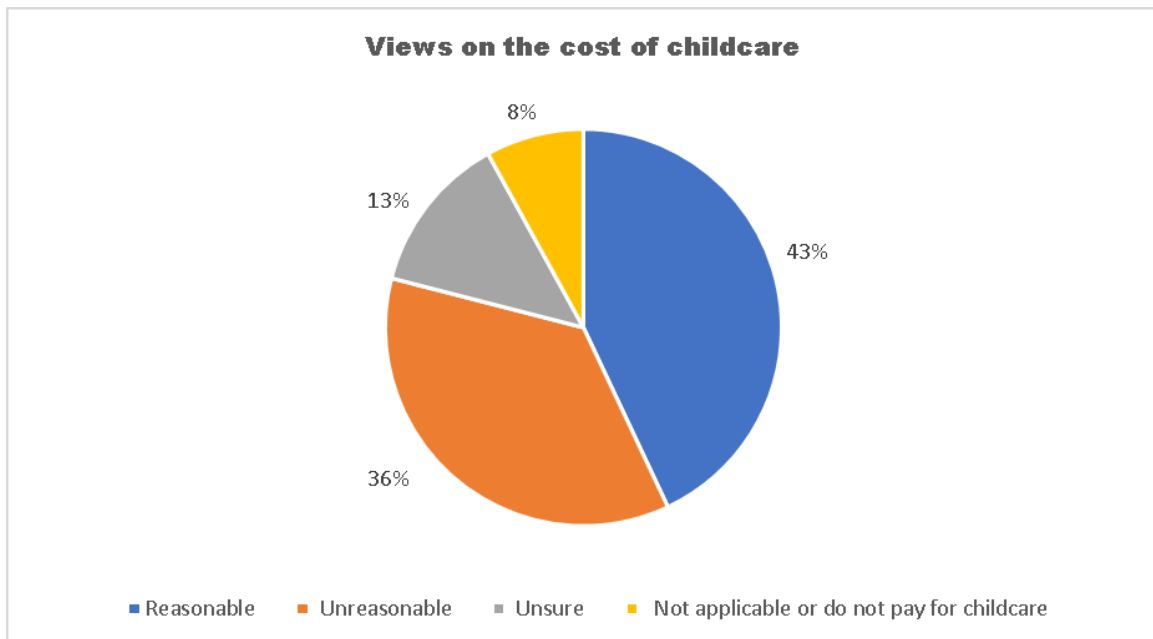
Nearly three quarters of the respondents said that finding information about suitable childcare was easy.



We asked parents/carers what their most important factors were when choosing childcare, the responses are summarised below.

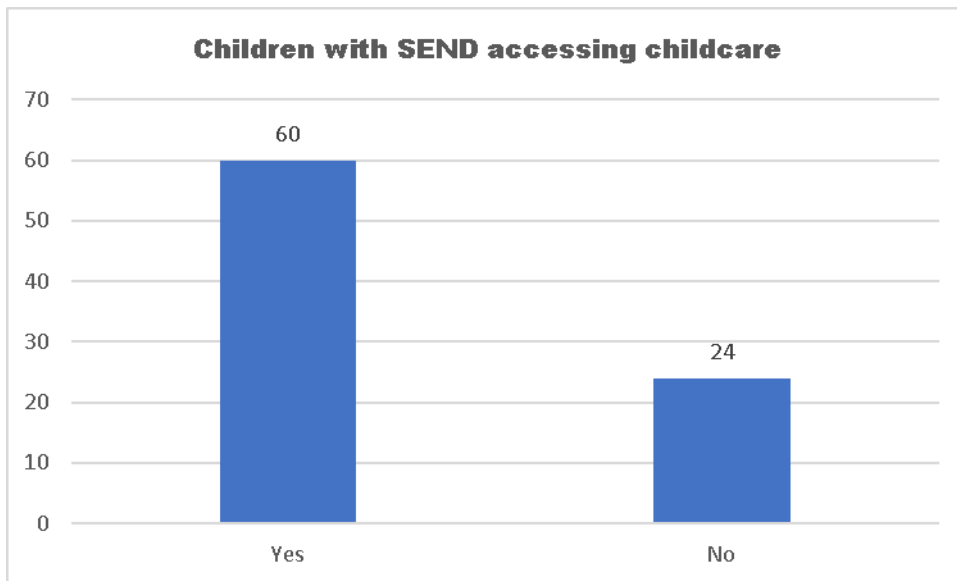
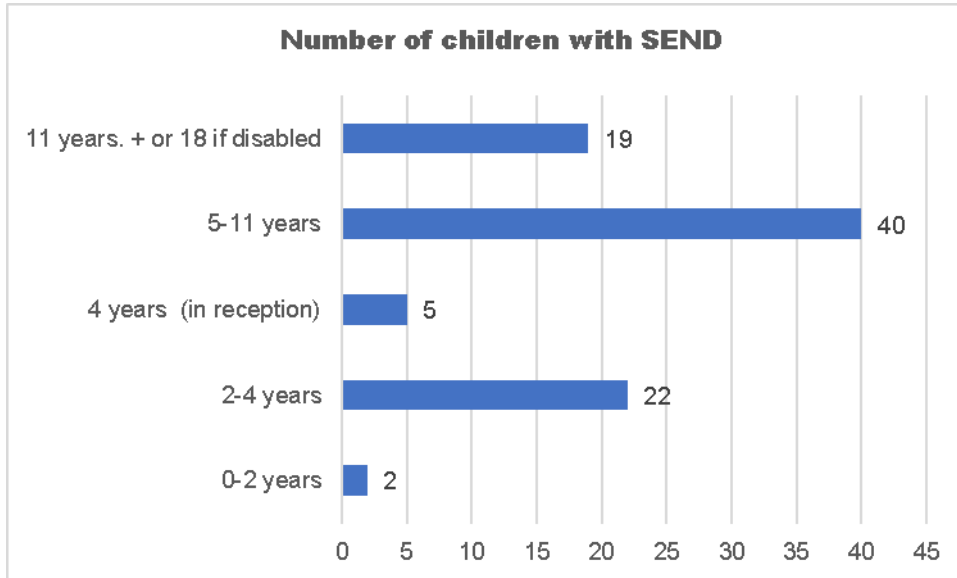


The chart below shows parent/carer views on the cost of childcare. Over half of parents/carers that completed our survey pay for their childcare using wages, followed by the Tax-Free Childcare scheme and finally using Early Education Funding.



Special Educational Needs and/or Disabilities (SEND)

We asked parents/carers if they have a child or children with SEND. The graphs below show the number of children with SEND and the following graph shows those who access formal childcare.



Early Education Funding

Nearly all our respondents were aware of the Early Education Funding for 2,3&4 year olds. 56% access a funded place however, 44% do not, this is due to the child's age either being too young or too old for funded places. Most parents access funded places at a Day Nursery or Pre-School Playgroup. 5% access funded places with a registered Childminder.



Childcare Provision

In Lancashire we have a large number of childcare providers offering a variety of childcare options and flexibility to enable families to access work and training.

The information provided in the tables below was captured in Autumn term 2023 and shows an overview of childcare providers in the area.

When counting the number of different providers, we include those who may offer more than one type of provision. In our provider type count this would be shown as three types of provision e.g., Pre-School Playgroup, Breakfast Club and After School Club however, those different types of provision may all come under one Ofsted registration. In the Movement in the Market and Quality of Provision sections of this report the numbers shown represent the number of Ofsted registrations rather than the number of provider types.

Provider Type Breakdown

The table below shows the district provider types available; on the following page the tables show provider types at a more localised level.

Provider Type	Chorley		
	Number	Responses	% Responses
Childminder	41	37	90%
Day Nursery	46	41	89%
Pre School Playgroup	7	6	86%
Maintained Nursery School	2	2	100%
Maintained Nursery Class	9	8	89%
Section 27	8	7	88%
Nursery Unit of Independent	0	0	0%
Breakfast Club	34	23	68%
After School Club	34	25	74%
Holiday Scheme	14	13	93%
Total	195	162	83%



Provider Type	Chorley Central			Chorley Rural North			Chorley Rural West			Clayton-le-Woods		
	Number	Responses	% Responses	Number	Responses	% Responses	Number	Responses	% Responses	Number	Responses	% Responses
Childminder	11	11	100%	1	1	100%	5	3	60%	9	8	89%
Day Nursery	12	10	83%	3	3	100%	7	7	100%	9	8	89%
Pre School Playgroup	1	1	100%	1	1	100%	3	3	100%	0	0	0%
Maintained Nursery School	2	2	100%	0	0	0%	0	0	0%	0	0	0%
Maintained Nursery Class	3	2	67%	0	0	0%	0	0	0%	3	3	100%
Section 27	2	2	100%	1	1	100%	2	1	50%	3	3	100%
Nursery Unit of Independent	0	0	0%	0	0	0%	0	0	0%	0	0	0%
Breakfast Club	9	6	67%	3	1	33%	4	2	50%	5	5	100%
After School Club	8	6	75%	3	1	33%	5	3	60%	6	6	100%
Holiday Scheme	4	4	100%	1	1	100%	3	3	100%	1	1	100%
Total	52	44	85%	13	9	69%	29	22	76%	36	34	94%

Provider Type	Coppull			Euxton			Rivington & Adlington		
	Number	Responses	% Responses	Number	Responses	% Responses	Number	Responses	% Responses
Childminder	4	4	100%	8	7	88%	3	3	100%
Day Nursery	1	1	100%	10	10	100%	4	2	50%
Pre School Playgroup	0	0	0%	1	1	100%	1	0	0%
Maintained Nursery School	0	0	0%	0	0	0%	0	0	0%
Maintained Nursery Class	1	1	100%	1	1	100%	1	1	100%
Section 27	0	0	0%	0	0	0%	0	0	0%
Nursery Unit of Independent	0	0	0%	0	0	0%	0	0	0%
Breakfast Club	1	1	100%	7	6	86%	5	2	40%
After School Club	1	1	100%	7	6	86%	4	2	50%
Holiday Scheme	0	0	0%	4	3	75%	1	1	100%
Total	8	8	100%	38	34	89%	19	11	58%



Movement in the Market

The table below shows the number of new Ofsted childcare registrations across Chorley alongside the number of providers who have closed.

In Chorley whilst there have been some closures during the past 12 months, overall, we have seen 8 providers join the childcare market and 13 leave. These numbers reflect the changes in the market and in some cases, provision may have been taken over by another provider or organisation. This shows in our data as a closed provider and a new provider, however, the provision and places available have remained in the area.

Area	Total Number of Providers	New/Altered Providers	Closed Providers	Net Change	% Change
Chorley Central	37	4	6	-2	-5%
Chorley Rural North	9	0	1	-1	-11%
Chorley Rural West	23	0	2	-2	-9%
Clayton-Le-Woods	24	2	1	1	4%
Coppull	6	0	0	0	0%
Euxton	25	2	2	0	0%
Rivington & Adlington	10	0	1	-1	-10%
Chorley	134	8	13	-5	-4%

Summary of Movement in the Market

Over the last year in Chorley 13 providers have closed, this includes 5 Childminders, 3 Day Nurseries, 1 Pre School Playgroup, 1 Maintained Nursery Class, 2 After School Clubs and 1 Breakfast Club. However, 8 providers have opened over the last year, and this includes 3 Childminders, 1 Maintained Nursery Class, 2 Governor Led Provision (s27) and 2 After School Clubs.

Whilst we have seen these changes in the area, we do still have capacity and some providers are willing to increase their capacity if demand requires it.

Area	Settings with Potential of Increasing Capacity if Required
Chorley Central	19
Chorley Rural North	4
Chorley Rural West	7
Clayton-Le-Woods	9
Coppull	3
Euxton	6
Rivington & Adlington	2
Chorley	50



Childcare Places

In this section we look at childcare places available in the area. The data is gathered over four weeks in Autumn term and should be seen as a snapshot of places at that time. Assessing childcare places is a complex process which depends on a large number of variables including but not limited to, the effects of changes in child population, demographics, housing developments, movement of families within an area, local geography and parental choice. The expansion of the Early Years Funding Entitlements and the Wraparound Programme is currently being delivered and rolled out, this is being reported on separately and is not included in this report.

The number of childcare places should be seen as an estimate as a provider will be limited by the requirements of the Statutory Framework for the Early Years Foundation Stage (EYFS). This includes having suitable floor space and staff to child ratio. Insurance policies may stipulate a maximum number of children they can care for at any one time.

The tables below show information for both the maximum number of places available, and the number of places a setting is currently 'working to' at any one time. For example, whilst we have floor space for 24 children, we are staffed for 16 children, therefore in the example given a provider would be working to 16 places.

0-4 Year Olds

Area	Population requiring childcare	Maximum Number of Places	Surplus Capacity (Maximum Places)	Working to Places	Surplus Capacity (Working to)
Chorley Central	1431	2281	850	2046	615
Chorley Rural North	219	264	45	252	33
Chorley Rural West	378	990	612	886	508
Clayton-Le-Woods	774	1248	474	1218	444
Coppull	243	304	61	304	61
Euxton	670	1279	609	1275	605
Rivington & Adlington	321	592	271	558	237
Chorley	4036	6958	2922	6539	2503

Summary of Childcare Places 0-4 Year Olds

When removing the population requiring childcare from the maximum places and the working to places. The table above shows we have sufficient places for 0-4 year olds at district level.

50 providers still have the capacity to increase to their maximum number of places if demand requires it. Families may also choose to travel across Chorley and neighbouring districts to access a childcare place. We will continue to monitor childcare places in the area, and in particular at any closures and any changes in demand for childcare.



5-14 Year Olds

Area	Population requiring childcare	Maximum Number of Places	Surplus Capacity (Maximum Places)	Childcare places working to	Surplus Capacity (Working to)
Chorley Central	452	689	237	598	146
Chorley Rural North	82	200	118	190	108
Chorley Rural West	161	504	343	357	196
Clayton-Le-Woods	254	268	14	267	13
Coppull	81	134	53	134	53
Euxton	216	775	559	770	554
Rivington & Adlington	112	326	214	322	210
Chorley	1357	2896	1539	2638	1281

Summary of Childcare Places 5-14 Year Olds

Childcare for children of school age is complex to report on due to the different requirements for Ofsted registration. Some schools in Lancashire operate their childcare under Section 27 of the (Education Act 2002), which allows schools to operate community services, including childcare, directly under the management of the school and its Governors. This type of provision is exempt from Ofsted registration, as it is inspected as part of the school inspection. Therefore, these childcare places may not all be counted in our data.

This is also true of childcare solely for over 8 year olds as Ofsted registration for these providers is voluntary. As a result, there are likely to be more places available than we can predict, particularly in this age group.

It is difficult to predict the population requiring childcare for this age group as families have more flexible working options available to them.

We will continue to monitor places in the area in case of any change in demand.



Early Education Funding

Please note the new extended entitlements are not being reported on in this report due to them not starting until 1st April 2024.

3&4 Year Olds (Universal Entitlement)

Every 3&4 year old is eligible for 15 hours funded childcare the term after their third birthday until they start school. Parents can choose to access this provision flexibly and use more than one provider to meet their childcare needs. The funding is available for 15 hours per week for 38 weeks per year. Some parents may choose more flexibility and use the funding throughout the year, a total of 570 hours is available.

3&4 Year Olds (30 Hours Extended Entitlement)

In addition, some families are eligible for the extended entitlement of 30 hours childcare for 3&4 year olds. This funding is targeted at working families who can access a total of 1,140 hours per year or 30 hours a week for 38 weeks of the year. It can also be used more flexibly over the year and with one or more childcare providers.

2 Year Olds

Some 2 year old children are eligible to access up to 15 hours of Early Education Funding. A child is eligible to access a place the term after their 2nd birthday, 570 hours are available 15 hours for 38 weeks per year, or parents may choose more flexibility and use the funding throughout the year.

Eligibility for a 2 year old funded place requires one of the following benefits:

- Income Support
- Income based Job Seekers Allowance (JSA)
- Income-related Employment and Support Allowance (ESA)
- Universal Credit
- Child Tax Credit and an annual income under (£16,190)
- The guaranteed element of State Pension Credit
- Support through part 6 of the Immigration and Asylum Act
- The Working Tax Credit 4 week run on (the payment you get when you stop qualifying for Working Tax Credit)

Children can also be eligible for 2 year old funding if they:

Are looked after by the council, have left care under a Special Guardianship Order, Child Arrangement Order or Adoption Order, if they get Disability Living Allowance, if they have a statement of Special Educational Needs (SEN), a current Education Health Care Plan (EHC), they are identified as a Child In Need, have a Child Protection Plan, are children of Gypsy Roma Heritage living in Lancashire, are children of Serving Armed Forces Personnel residing in Lancashire or are children who meet the criteria for Portage.

For more information about the criteria for 30 hours and 2 year olds funding please visit:

<https://www.lancashire.gov.uk/children-education-families/early-years-childcare-and-family-support/paying-for-childcare/>



Early Education Funding for 2 Year Olds

Eligible population data is provided by the Department for Education (DfE) based on a snapshot in time. Where the percentage take up is over 100% families may have become eligible after the data was provided therefore are not included in the eligible population.

Area	Spring Term 2023			Summer Term 2023			Autumn Term 2023		
	Eligible Population	No of Children	% take up	Eligible Population	No of Children	% take up	Eligible Population	No of Children	% take up
Chorley Central	101	110	109%	116	117	101%	120	110	92%
Chorley Rural North	7	5	71%	6	5	83%	11	8	73%
Chorley Rural West	12	15	125%	14	17	121%	12	12	100%
Clayton-Le-Woods	49	44	90%	52	50	96%	41	41	100%
Coppull	17	13	76%	19	17	89%	15	18	120%
Euxton	38	48	126%	39	39	100%	35	29	83%
Rivington & Adlington	15	15	100%	16	13	81%	13	11	85%
Chorley	239	250	105%	262	258	98%	247	229	93%

Summary of Take Up for 2 Year Olds

Increasing the take up of Early Education Funded places is key to helping ensure that all children have the best start in life and achieve their full potential. Accessing a funded place helps promote positive outcomes in children's health and wellbeing, learning and behaviour as well as preparing them for starting school.

Following actions from our last published CSA report a campaign to increase take-up of funded provision has been implemented. This has included working with partner agencies to encourage families to access provision and work with local childcare providers to promote marketing and advertising of the funded provision. This campaign is going to continue, and we will monitor the take up of places in the area.

Early Education Funding for 3&4 Year Olds

The eligible population data is taken from the Office for National Statistics (ONS) which may not reflect the actual number of 3&4 year olds living in an area.

Area	Spring Term 2023			Summer Term 2023			Autumn Term 2023		
	Eligible Population	No of Children	% take up	Eligible Population	No of Children	% take up	Eligible Population	No of Children	% take up
Chorley Central	866	787	91%	866	773	89%	866	780	90%
Chorley Rural North	144	150	104%	144	150	104%	144	137	95%
Chorley Rural West	250	226	90%	250	239	96%	250	243	97%
Clayton-Le-Woods	496	430	87%	496	435	88%	496	463	93%
Coppull	157	130	83%	157	121	77%	157	115	73%
Euxton	416	403	97%	416	395	95%	416	405	97%
Rivington & Adlington	205	156	76%	205	162	79%	205	177	86%
Chorley	2534	2282	90%	2534	2275	90%	2534	2320	92%

Summary of Take Up for 3&4 Year Olds

The take up for 3&4 year olds has been consistent over the year. Accessing a funded place helps promote positive outcomes in children's health and wellbeing, learning and behaviour as well as preparing them for starting school. Therefore, the take up of 3&4 year old Early Education Funded places will continue to be monitored.



Accessibility of Childcare

Some of the main factors which influence parent's decisions when considering childcare include opening hours, the cost of childcare, and the quality of provision, including provision for children with Special Educational Needs and or Disabilities (SEND). Flexibility of childcare enables parents to have a greater choice of provision and to balance work and family life. A summary of opening hours is contained in the table below. Please note if a provider selected multiple provider types in our survey and for example has selected a Day Nursery and Holiday Club and the Day Nursery is open 50 weeks of the year this will skew the opening hours for the Holiday Club. It may exaggerate the number of weeks the Holiday Club is open.

Opening Hours

Provider Type	Average Opening Days	Average Opening Weeks	Average Opening Hours	Open Weekends (%)
Childminder	5	47	10	2%
Day Nursery	5	50	10	0%
Pre-School Playgroup	5	38	7	0%
Maintained Nursery School	5	38	9	0%
Maintained Nursery Class	5	38	6	0%
Governor Led Provision (s27)	5	38	8	0%
Nursery Unit of Independent Schools	0	0	0	0%
Breakfast Club	5	39	1	0%
After School Club	5	40	3	0%
Holiday Scheme	4	28	10	0%
Chorley	5	43	7	1%



Help Paying for Childcare

There are many different kinds of financial support available to help families pay for childcare. The support available will depend on individual circumstances.

Support available for families

- Child Benefit
- Child Tax Credit
- Working Tax/Universal Credit
- Childcare Element of Working Tax Credit
- Childcare Vouchers
- Tax Free Childcare
- Early Education Funding for 2, 3&4 year olds

Support available for parents who are studying

- Care to Learn
- Childcare Grant
- Discretionary Learner Support Fund, Hardship Fund/Bursaries
- Parents Learning Allowance
- Access to Learning Fund
- NHS Student Grants and Bursaries
- Professional and Career Development Fund
- Educational or Charitable Trust Funding

Families living with disabilities or special educational needs

- Disability Living Allowance (DLA)
- Personal Independence Payment (PIP) (for children aged over 16)
- Direct Payments
- Disabled Childcare element of Child Tax Credit

<https://www.lancashire.gov.uk/children-education-families/early-years-childcare-and-family-support/paying-for-childcare/help-paying-for-childcare/>



Childcare Fees

Cost remains a deciding factor when parents are looking for childcare, we asked our providers about their fees, the responses are summarised below.

Provider Type	Under 2's				2 year olds				3-4 year olds				5-14 year olds (18 yrs SEND)			
	Hour	Session	Day	Week	Hour	Session	Day	Week	Hour	Session	Day	Week	Hour	Session	Day	Week
Childminder	£5.05		£42.35	£189.72	£5.05		£41.81	£188.61	£5.05		£41.81	£189.11	£5.18	£8.20	£37.36	£204.67
Day Nursery	£6.14		£57.56	£258.33	£5.95		£53.10	£241.53	£5.95		£52.49	£239.44				
Pre-School Playgroup	£7.00	£18.00	£40.00	£200.00	£6.40	£21.00	£40.00	£177.20	£6.00	£19.17	£36.40	£166.00				
Maintained Nursery School					£5.00	£15.00	£41.50	£206.50	£4.00	£13.00	£36.50	£181.50				
Maintained Nursery Class					£5.50	£16.00	£34.50	£171.50	£5.00	£13.71	£29.17	£146.60				
Governor Led Provision (s27)					£6.00	£15.50	£38.00	£189.00	£5.00	£14.14	£33.00	£171.50				
Nursery Unit of Independent Schools																
Breakfast Club						£5.00				£4.91				£5.48		
After School Club						£10.00				£8.64				£8.96		
Holiday Scheme											£30.00	£135.00			£26.62	£125.27

Summary of the Cost of Childcare

Childcare providers have supplied us with their hourly, sessional, daily and weekly fees. Some may have different charging patterns, and this can depend on age, opening times and additional services offered. Therefore, it is more difficult to compare childcare charges across the sector. In Chorley a parent can expect to pay between £4.00 and £7.00 per hour

Pre School Playgroup is the provider type that has the most expensive hourly rate at £7.00 per hour Maintained Nursery School is the provider type that has the lowest hourly rate at £4.00. Childcare fees in Chorley appear consistent without many extreme variables in hourly, sessional, daily and weekly charges. This should be seen as a guide to childcare fees in Chorley.



Quality of Childcare Provision

Quality of care and education is one of the most important aspects when a parent is choosing childcare for their children. Access to high quality childcare has long term benefits for children, particularly those from disadvantaged families. The tables below show an overview of Ofsted inspection outcomes for Outstanding, Good, Requires Improvement and Inadequate providers. The tables also include providers who have yet to be inspected and those providers on the childcare register who receive a met or not met outcome.

Childminders who are part of a Childminding Agency receive an overall judgement, in the table below this shows as effective or compliant. The majority of children in Lancashire will have access to good high-quality childcare.

Childcare on Domestic Premises - Childminders

Area	Outstanding	Good	Requires Improvement	Inadequate	Met	Not Met	Not Yet Inspected	Effective	Compliant
Chorley Central	2	8	0	0	0	0	0	1	0
Chorley Rural North	0	0	0	0	0	0	1	0	0
Chorley Rural West	0	4	0	0	1	0	0	0	0
Clayton-Le-Woods	0	5	1	0	0	0	2	0	1
Coppull	2	2	0	0	0	0	0	0	0
Euxton	1	6	0	0	0	0	1	0	0
Rivington & Adlington	0	3	0	0	0	0	0	0	0
Chorley	5	28	1	0	1	0	4	1	1

Childcare on Non-Domestic Premises – including, Day Nurseries, Pre-School Playgroups, Nursery Unit of Independent Schools, Maintained Nursery Classes, Maintained Nursery Schools, Governor Led Provision (S27), Breakfast Clubs, After School Clubs and Holiday Clubs

Area	Outstanding	Good	Requires Improvement	Inadequate	Met	Not Met	Not Yet Inspected	Excellent	Compliant
Chorley Central	5	14	0	0	1	0	6	0	0
Chorley Rural North	1	5	0	0	2	0	0	0	0
Chorley Rural West	2	9	0	0	1	0	6	0	0
Clayton-Le-Woods	1	14	0	0	0	0	0	0	0
Coppull	0	2	0	0	0	0	0	0	0
Euxton	1	8	1	0	2	0	5	0	0
Rivington & Adlington	1	5	0	0	0	0	1	0	0
Chorley	11	57	1	0	6	0	18	0	0

Summary of the Quality of Provision

From the information shown we can see that 101 childcare providers in Chorley have been inspected and are Good and Outstanding. 22 providers are still awaiting inspection. Some providers may not have had early years children present at the time of inspection and some providers may only be registered on the Childcare Register, therefore will have received a Met or Not Met judgement. Chorley Central has the highest number of Outstanding providers. We can summarise that families accessing childcare in these areas are using high-quality childcare provision.



Provision for Children with Special Educational Needs and/or Disabilities (SEND)

It is vital for children with SEND to be supported within high quality provision with practitioners who have an excellent understanding and are able to carry out effective observation, assessment and planning. Inclusion should be embedded as part of everyday practice, where staff are flexible and ensure individual needs are met.

The tables below show providers responses about their provision for children with SEND.

Area	Do You Offer Places for Children with SEND		Number of Children Accessing with SEND
	YES (%)	No (%)	
Chorley Central	94%	6%	121
Chorley Rural North	100%	0%	6
Chorley Rural West	100%	0%	38
Clayton-Le-Woods	91%	9%	71
Coppull	83%	17%	110
Euxton	100%	0%	101
Rivington & Adlington	83%	17%	11
Chorley	95%	5%	458

Area	Changes in Demand		
	Remained the same	Decreased	Increased
Chorley Central	70%	7%	23%
Chorley Rural North	71%	14%	14%
Chorley Rural West	58%	11%	32%
Clayton-Le-Woods	50%	5%	45%
Coppull	60%	0%	40%
Euxton	43%	9%	48%
Rivington & Adlington	80%	0%	20%
Chorley	59%	7%	34%

Summary of SEND provision

95% of providers in Chorley offer places for children with SEND. The numbers of children accessing a SEND place were highest in Chorley Central.

59% of providers in Chorley who responded to our survey said that demand for SEND places remained the same. Access to SEND places has increased most in Euxton with an overall increase of 34% across Chorley.



Business and Finance

Sustainability has been one of the main challenges for childcare providers. Changes in demand for childcare and the rising cost of living has placed financial pressure on the sector.

Providers are struggling to recruit knowledgeable, qualified practitioners. This has led, in some areas to settings reducing childcare places available or even closure.

Moving forwards, we will continue to monitor the take up of childcare places to understand the impact of the rising cost of living and the recruitment and retention of staff.

Childcare providers were asked about the sustainability of their business and the impact of any changes over the last year. The tables that follow summarise the responses.

Area	Are you Sustainable	
	YES (%)	No (%)
Chorley Central	100%	0%
Chorley Rural North	78%	22%
Chorley Rural West	91%	9%
Clayton-Le-Woods	56%	44%
Coppull	100%	0%
Euxton	100%	0%
Rivington & Adlington	82%	18%
Chorley	87%	13%

Area	Timescale of Providers Being Concerned About Longer Term Viability				
	3 months	6 months	12 months	24 months	No concerns
Chorley Central	0%	0%	12%	12%	76%
Chorley Rural North	0%	0%	40%	30%	30%
Chorley Rural West	3%	0%	14%	10%	72%
Clayton-Le-Woods	2%	17%	32%	15%	34%
Coppull	0%	0%	13%	7%	80%
Euxton	0%	2%	15%	7%	76%
Rivington & Adlington	0%	20%	7%	0%	73%
Chorley	1%	5%	19%	14%	61%

Summary of Business and Finance

At the time of responding to our survey the majority of providers in Chorley indicated they are currently sustainable. 19% of providers in Chorley have concerns about their longer term viability within the next 12 months.



Key Findings and Action Plan

Area	Key Findings
Chorley	Chorley has 134 Ofsted registered childcare providers. Over the last 12 months the net change in the number of providers is -5. 50 providers said they would increase their numbers if demand required it. Chorley district shows a surplus in places across all age groups. The average EEF2 take up for the district is 99% and the average take up for EEF 3&4 year olds is 91%. This is an increase in take up of EEF 2 since our last published CSA. 98% of providers have received an Ofsted judgement that was Good or Outstanding. 95% of providers offer places for children with SEND, 59% have said demand for places has remained the same. 87% are sustainable, however, 19% are concerned about their longer term viability over the next 12 months.
	Actions <ol style="list-style-type: none"> 1. We will continue to monitor childcare places in the area, in particular the impact of any closures and any changes in demand. 2. We will monitor providers who are concerned about the longer term viability and finance. 3. We will continue to monitor the take up for Early Education Funding for 2,3&4 year olds. 4. We will continue to support providers with staff recruitment by advertising vacancies on our website.

Conclusion

To summarise, Chorley has sufficient childcare places to meet the needs of working parents. Our latest assessment shows we have childcare places available across all age ranges and all provider types at district level.

The rising cost of living has placed financial pressure on the sector and providers are struggling to recruit qualified practitioners. This is leading some settings to reduce the number of childcare places available. We will continue to respond to providers who may require further support.

Monitoring the take up of Early Education Funding across all areas of Chorley is going to remain. We will continue to respond to areas where take up of Early Education Funding is low or if any childcare providers close.

