



SACRE NEWSLETTER

(Issue 17) Summer 2024

Link to the RE page on the LPDS website

[Religious Education - LPDS Resources \(lancashire.gov.uk\)](https://lancashire.gov.uk)

Contents

Page 1

[RE Self Evaluation Survey 2024](#)

[SACRE FAQ's](#)

Page 2

[Deep & meaningful](#)

[School Portal—Did you know?](#)

[The Jerusalem Trust](#)

Page 3

[Lancashire Schools—Bank's St Stephens](#)

Page 4

[Lancashire SACRE - Who are we?](#)

[School Governor Information](#)

Page 5

[Virtual Tour of Conway Hall](#)

[Stereotyping Toolkit](#)

[Shap Audio Glossary](#)

Page 6

[Spirited Arts competition](#)

[Visual Commentary on Scripture](#)

Page 7

[Treasure Champs & Migration Museum](#)

[Religious Festivals 2024 calendar](#)

Page 8

[Edenfield](#)

Page 9

[RE Today Roadshows](#)

[New RE Hub website is Live](#)

Page 10

[Religion & worldview approach](#)

[Assessment & Moderation training](#)

Page 11

[Our Associate RE Consultants](#)

[Needing help with anything RE?](#)

Page 12

[LPDS/RE website Information](#)

Annual (RE) Self Evaluation Survey 2024

The annual survey is now live & the deadline for submission is 1 October. Instructions, including a link to the survey, were uploaded to the School's Portal on 26 April.

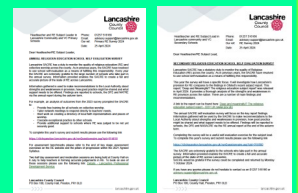
You can access the survey by double clicking on the Primary or Secondary letters below.

Lancashire SACRE are greatly appreciative of the increasing number of schools who are completing the survey each year. The SACRE have a duty to monitor RE provision & have to report their findings to the DFE, NATRE & schools via the annual report each autumn term.

Two moderation sessions are being provided this year to support teachers in

making summative assessment judgements in Religious Education. They are both being held at County Hall, Preston on 8 July 2024. The charge is £20 per teacher. To sign up please follow this link

[Details - Lancashire Professional Development Service](#)



FAQ's

The Lancashire SACRE team has created a FAQ area on the new RE website with the intention of enabling schools to find answers to some of the more commonly asked questions.

[FAQ's - The Lancashire Agreed Syllabus for Religious Education - LPDS Resources](#)

You need to have a LPDS account, to be able to see these, see [page 12](#) on how to create one if you have not done so already.

Subject Report 'Deep and Meaningful'

The Religious Education (RE) Subject Report – 'Deep and Meaningful'

April 2024 saw the release of the much awaited Ofsted RE Subject Report. Unsurprisingly it contains a range of recommendations for improving the quality of RE provision in both primary and secondary schools. Lancashire SACRE's secondary survey has been written to reflect the main report findings and recommendations. The survey can act as a useful self-evaluation exercise for the RE school lead.

To access the report please click here.

[Deep and meaningful? The religious education subject report - GOV.UK \(www.gov.uk\)](https://www.gov.uk/government/uploads/system/uploads/attachment_data/file/121212/Deep_and_meaningful?_ga=2.147111111.171212121.20240401.171212121.171212121)



LCC School Portal

Did you know that the LCC Schools' Portal provides secure access to a number of online systems, including an electronic post system, traded services & a range of information aimed at supporting schools across Lancashire. We put lots of updates, newsletters, training opportunities, and other important RE/SACRE information on to the schools portal, these posts get addressed to the headteacher and to the RE Lead. If as an RE lead you are not getting these please check with your head and make sure that you are nominated as the RE Lead on the portal so that you get these important updates

[Schools' Portal \(lancsngfl.ac.uk\)](https://lancsngfl.ac.uk)



schools'portal

The Jerusalem Trust

The Jerusalem Trust's Small Grants to Schools Scheme supports the teaching of Christianity within Religious Education. The scheme operates by providing schools with grants of up to £600 to purchase resources for use in RE lessons.

The scheme is open to state funded schools in England and Wales, with 40% awarded to secondary schools and 60% to primary schools. Grant availability during the school term, for both sectors, is notified on the website Home page.

[The Jerusalem Trust \(regrants.org.uk\)](https://regrants.org.uk)

The Jerusalem Trust

RE Grants
for schools

What are SACRE members up to?

Visit to Banks St. Stephen's CE Primary School *"Belonging, Serving, Succeeding"*

Visitors to Banks St Stephen's CE Primary School can have no doubts as to the importance of RE. This is evident in the high quality of displays on corridors and in classrooms, as well as in the environment around the school, where a cross proclaims the Church of England foundation in eco-woodland.

In March, three members of Lancashire SACRE visited Banks St Stephen's to meet with the headteacher, RE subject leader and four Year 6 pupils, who were members of the Worship council, and enjoyed an afternoon in the School. The pupils spoke confidently and proudly about the work in their RE books and about how much they enjoyed and gained from the subject. They took the SACRE members into each class, several of which were engaged in RE. It was clear that the subject is well-resourced and very well led. The schemes of work being thorough give sound support to all teachers. The children showed a good understanding of several world religions and it was interesting to find out that they deal with some difficult ideas such as martyrdom as shown in the life and death of Archbishop Oscar Romero.

As members of the Worship council, the pupils explained the importance of the School's Christian values and how these provide a focus each term and inspire the work the pupils undertake in the wider community. They also take a leading part in the worship life of the school, planning, taking a lead, writing the school prayer and helping in evaluation.

The SACRE members would like to thank Mr Allen, the headteacher, the staff and pupils of Banks St Stephen's for their hospitality and demonstration of excellent RE during their visit.

John Wilson

Vice Chair of Lancashire SACRE



SACRE Members – under the spotlight in this edition is:



Aruna Patel - I am proud to be the SACRE representative for the Lancashire Federation of the Teaching Union the NASUWT. I am Vice Chair of Governors at St Stephens Church of England School and a Junior Primary School teacher who has been responsible for leading and teaching Religious Education in a variety of faith and non-faith based schools across England. With the advantage of understanding the teaching and learning requirements of the Primary Curriculum, I have also delivered

whole school assemblies, dance and drama workshops to schools, beavers and cubs; teaching Hinduism my adapted way, so that it is relevant and accessible to a variety of groups and audiences, in modern Britain.

As a British born Hindu, who struggled with understanding my own Hindu beliefs and cultural identity, I have always hoped to promote the teaching of RE in our ever-evolving, diverse world. I recognised from my own childhood experiences, that it was vital that every child had a sense of belonging and could be proud of their heritage, celebrating their beliefs and traditions. I craved this spiritual nurturing and knowledge as a child. Indeed, it was this inquisitiveness and longing to understand that led me to study Theology at Westminster College, Oxford. After my pilgrimage to India, this was possibly one of the most spiritually empowering times of my life. Here I graduated learning that Religious Education was beyond vast; it was infinite. Moreover, I learned that RE was essential to ensure peace, love and understanding around the world.

So here I am, blessed to be a Lancashire SACRE member and committed to ensure and safeguard the provision of quality RE in Lanca-

School Governor Information

Are you a School Governor? Do you want to see effective RE provision in your school?

This article by Lat Blaylock identifies 10 questions that you can ask your leadership team.

[Ten ways governors can help RE.pdf \(natre.org.uk\)](https://www.natre.org.uk/Ten%20ways%20governors%20can%20help%20RE.pdf)



Virtual Tour of Conway Hall



Conway Hall is one of only two surviving buildings in the UK built by and for the non-religious. **A humanist building**, this was a place where non-religious people could gather, to come together and find community. The **virtual tour** provides teachers and students with the opportunity to explore the humanist worldview and its history. As well as introducing the history of the building and the people who have used it, the tour explores what it means to be 'humanist'.

To access the video tour and a wide range of resources click here:

[Conway Hall virtual tour » Understanding Humanism](#)

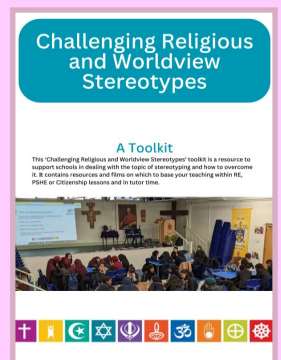


Challenging Religious and Worldviews Stereotyping Toolkit

This excellent toolkit supports schools in dealing with the topic of religious stereotyping. It contains lesson plans and ideas for collective worship.

To access it please follow this link to the Lancashire RE website;

[Toolkit 2.pdf \(lancashire.gov.uk\)](#)



Shap Audio Glossary

Not sure of religious vocabulary? Need a simple, clear explanation for what a word means?

This Shap audio glossary reads the words to you, explains what they mean and tells you which religion and worldview they belong to. Really helpful! See the link below.

www.shapcalendar.org.uk/glossary.html



Spirited Arts Competition 2024



Final date for entries: 31st July 2024

The themes have been released for this year's Spirited Arts competition, 2024 is the 20th anniversary of the competition. There will be up to 40 prizes – usually Amazon vouchers - for the competition plus certificates for all schools entering to give to their pupils.

For further details please click here: [Enter Spirited Arts | NATRE Competition](#)

Lancashire would be excited to show case entries to the Spirited Arts competition on our RE website. Please send photos of your entries to;

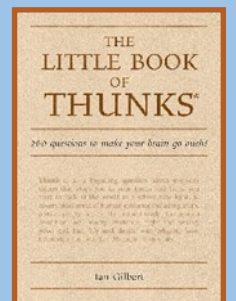
advisory.support@lancashire.gov.uk



Philosophy for Children

Wanting to challenge pupils with some thought – provoking questions?

A Think is a beguiling question about everyday things that stops you in your tracks and helps you start to look at the world in a whole new light. This little book can develop philosophical thinking for all ages



The Visual Commentary on Scripture (VCS)

The Visual Commentary on Scripture is a freely accessible online publication that provides theological commentary on the Bible in dialogue with works of art. It helps its users to (re)discover the Bible in new ways through the illuminating interaction of artworks, scriptural texts, and commissioned commentaries. [Visual Commentary On Scripture | VCS \(thevcs.org\)](#) watch their short introduction here

[About The VCS | VCS](#)



TREASURE CHAMPS

Treasure Champs is an early years BBC series that explores moral values common to different faiths and cultures.

There are 15 episodes covering values such as courage, perseverance, honesty & empathy

[BBC iPlayer - Treasure Champs](#)



Religious Festivals 2024

Follow this link for a Religious festivals 2024 calendar (this is not an exhaustive list) [Interfaith Resources - Lancashire Professional Development Service](#)

Log on using your LPDS account, please see [page 11](#) for help on how to create an account if needed.

For a more detailed calendar, head to the Interfaith Network website

[religious festivals - Resources - The Inter Faith Network \(IFN\)](#)



MIGRATION MUSEUM

The Migration Museum is an online resource bank to support teachers in addressing migration, diversity, race and equality.

[Migration Museum Resource bank - Migration Museum](#)



Edenfield Church of England Voluntary Controlled Primary School share how their involvement in the YLA has helped their pupils to challenge injustice and develop as global citizens.

The Archbishop of York Young Leaders in Class 1 and Class 5 at Edenfield C. E. Primary school have enjoyed a busy year planning and delivering social action projects and raising money for charity. The children are developing their roles as agents for change by working together to raise awareness and funds for local and worldwide issues.

In Year 1, pupils put their leadership skills into practice by launching a class food bank in order to collect goods for the local community and the people of Ukraine. This was inspired by the school hosting three Ukrainian children last year and our continued contact with their aunt, Oksana, who works closely with the Ukrainians in Rossendale Support Group. Our LCC governor, Mrs Anne Cheetham, informed us of the good work being achieved by this group and school were keen to contribute. The children promoted the foodbank amongst our school community, as well as launching this in their class 'Family Worship' and they have been well supported by parents who have donated non-perishable products which will be distributed to orphanages, local hospitals, and women and children who remain mostly on the frontline. Items will also be donated to The RAFT Foundation, our local foodbank. In this way the children are demonstrating their leadership skills of kindness, teamwork and perseverance.

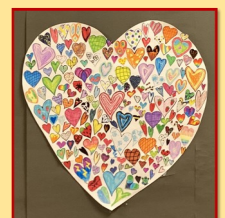
Our Y1 Young Leaders



Further up the school, Year 5 Young Leaders are focusing on protecting God's wonderful planet. Charity projects have included making and selling decorative pebbles and jewellery, both emblazoned with motivational phrases spreading awareness of environmental issues. Money raised was used to invest in extending the school's recycling system to include all plastic products which are now collected fortnightly. The children led this project, writing persuasive letters to the headteacher and governors to invest in the new recycling bins and collections so that all of the paper and plastic products used in school are recycled.

This was followed by the children putting together a proposal for the Diocesan 'Planet Savers Award' which includes leading a World Environment Day in June. This will involve spending a whole day learning without the use of electricity (including technology which has the most impact on all schools' carbon footprint). Instead, the children will enjoy outdoor learning, wearing environmentally friendly clothing, and work on various projects linked to protecting the environment.

A Little Bit of Love Goes a Long, Long Way
Inside the big heart are 196 small hearts to represent every pupil at Edenfield. We may be small but we work together to share out core values of LOVE, HOPE, JOY, FORGIVENESS, FAITH AND RESPECT



RE Today Roadshows - with Lat Blaylock, RE Adviser

If you are a primary teacher of religious education looking for support and intensely practical training to teach religious & non-religious worldviews, then book your place on to one of our regional face-to-face roadshows! Get affordable, high-quality, and intensely practical training, showcasing the best resources from RE Today and NATRE - giving you and your school the support and confidence to teach about religious and non-religious worldviews.

Led by one of the most inspiring speakers on Religious Education you will ever hear, Lat Blaylock will draw upon a career in RE to give a clear vision for the future of the subject in the next five years including an engagement with worldviews, using different ways of knowing in RE and the latest Ofsted requirements

Interested? Follow this link.

[RE Today Roadshows](#)



The New RE-Hub website is live!

This is a one-stop shop for all things RE.

The RE Hubs project aims to connect those who can provide resources with those who need them.



<https://www.re-hubs.uk/>


The screenshot shows the RE Hubs website interface. At the top left is the RE Hubs logo. A horizontal navigation menu contains the following links: Home (underlined), Hubs, Calendar, Upskill, Get Involved, About, Contact, and Search. Below the navigation are four distinct content boxes. The first box, titled 'Hubs', features a photograph of several lit candles and the text 'Find your hub location'. The second box, titled 'Calendar', shows a calendar with colorful pushpins and the text 'Courses and events'. The third box, titled 'Local groups', depicts a group of people in a meeting and the text 'Find local groups'. The fourth box, titled 'Places of interest', shows a group of children looking at a display and the text 'Find places of interest'.

RELIGION AND WORLDVIEW APPROACH

Unsure about a religion and worldview approach to the teaching of religious education?

Access this excellent series of videos from Nottingham University.

[Introducing the Religion and Worldview approach to religious education - MediaSpace - University of Nottingham](#)



Introducing
**Religion &
Worldviews**

Introducing the Religion and
Worldviews Approach to
Religious Education

1. What does good RE look like?

Final Call — Assessment and Moderation training

There are two RE Assessment and Moderation training sessions running on Monday 8th July at The Exchange in County Hall.

Two half day sessions are available to support teachers in forming assessment judgements in RE. This will include shared moderation for Y2 and Y6.

Book onto a session here for just £20 [Details - Lancashire Professional Development Service](#)



Our Associate RE Consultants

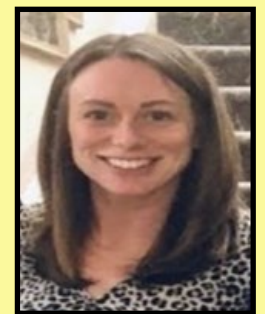
Helen Hall - I am currently working as Acting Deputy Headteacher at Buckshaw Primary School, based in a Year 2 class. I have worked as an Associate Consultant for Lancashire SACRE since 2019 and have thoroughly enjoyed working with colleagues from across the county to develop quality teaching, learning and assessment materials. Within my own class, I like to engage children in learning about different worldviews and how the belief has an effect on behaviour and choices through a variety of approaches.



Michelle Smyth — I currently work as a Year 3/4 class teacher at Westhead Lathom St James and am responsible for RE. I have worked extensively across primary schools in Manchester and Stockport as an R.E. coordinator and I am passionate about the teaching of R.E creatively. I am excited to join the Lancashire R.E team and I look forward to supporting others, on their journey to delivering a great R.E curriculum for all their pupils.



Rebekah Fielding Hi! I'm Rebekah and I am part of the RE Advisory team. My Leadership roles have included Assistant Headteacher and Acting Headteacher. I am KS1 manager, SENDCo and RE Leader, with a degree in the subject. I currently lead the RE Hub for Manchester Diocese. These roles have equipped me with the knowledge and skills to support, encourage and enable RE Colleagues to teach high quality Religious Education, with an interesting, practical and creative approach for our children.



Needing Help with RE?

- Are you finding the Agreed Syllabus a challenge?
- Not sure how to assess in RE?
- Needing to increase subject knowledge of a specific religion?
- Wanting to raise the profile of RE in your school?
- Committed to developing the effectiveness of the subject leader for Religious Education?

To enquire about RE support and/or to find out more about what we offer please click this link and fill out the enquiry form, and someone will be in touch with you very soon.

<https://clickquestion.lancashire.gov.uk/runQuestionnaire.asp?qid=909700>

New LPDS Website (Teaching & Learning)

You should be aware by now that the Lancashire Grid for Learning (LancsNGFL) moved in July 2022 & is now combined with the Lancashire Professional Development Service (LPDS) website.

The new **LPDS Teaching and Learning Website** can be accessed here:

www.lancashire.gov.uk/lpds If you have a RE website subscription it is located here:

[Religious Education - LPDS Resources \(lancashire.gov.uk\)](http://www.lancashire.gov.uk/lpds/resources/religious-education)

In order to access all of the password protected materials that are available to your school in the **premium & exclusive areas** of the website that you or your school subscribes to, to book on o a course or order a publication you first need your own teacher account to be set up on the new LPDS website, the head has to do this in the first instance, they need to follow the guidance sent to them periodically since July 2022 via the portal & via email, attached to this email, help is also available on the website [Help - LPDS Resources \(lancashire.gov.uk\)](http://www.lancashire.gov.uk/lpds/resources/help)

Account Set up order;

1. **Head** to set up an LPDS account for themselves using this link (if not already done so), it is suggested using the head@ email address [Register - Lancashire Professional Development Service](http://www.lancashire.gov.uk/lpds/register)
2. **Head** to email LPDS@lancashire.gov.uk & let them know which email address has been used to register, LPDS will then add the RE subscription on to your account.
3. **Head** to set up an LPDS account for all teachers
4. **Head** to then give teachers access to each subscription (SLA) as required, such as RE, Maths, Music, PE & English
5. **Teachers** to use forgotten password link to access materials

The help section on the website will answer any questions;

[Help - Lancashire Professional Development Service](http://www.lancashire.gov.uk/lpds/resources/help)

Please note that teachers cannot do stage 5 if the head has not already set up an account on their behalf.

If you need any **technical support** regarding logging on **after** your head has set you up with an account then please contact lpds@lancashire.gov.uk

For other queries such as website content please do not hesitate to contact us on 01257 516166 or advisory.support@lancashire.gov.uk

