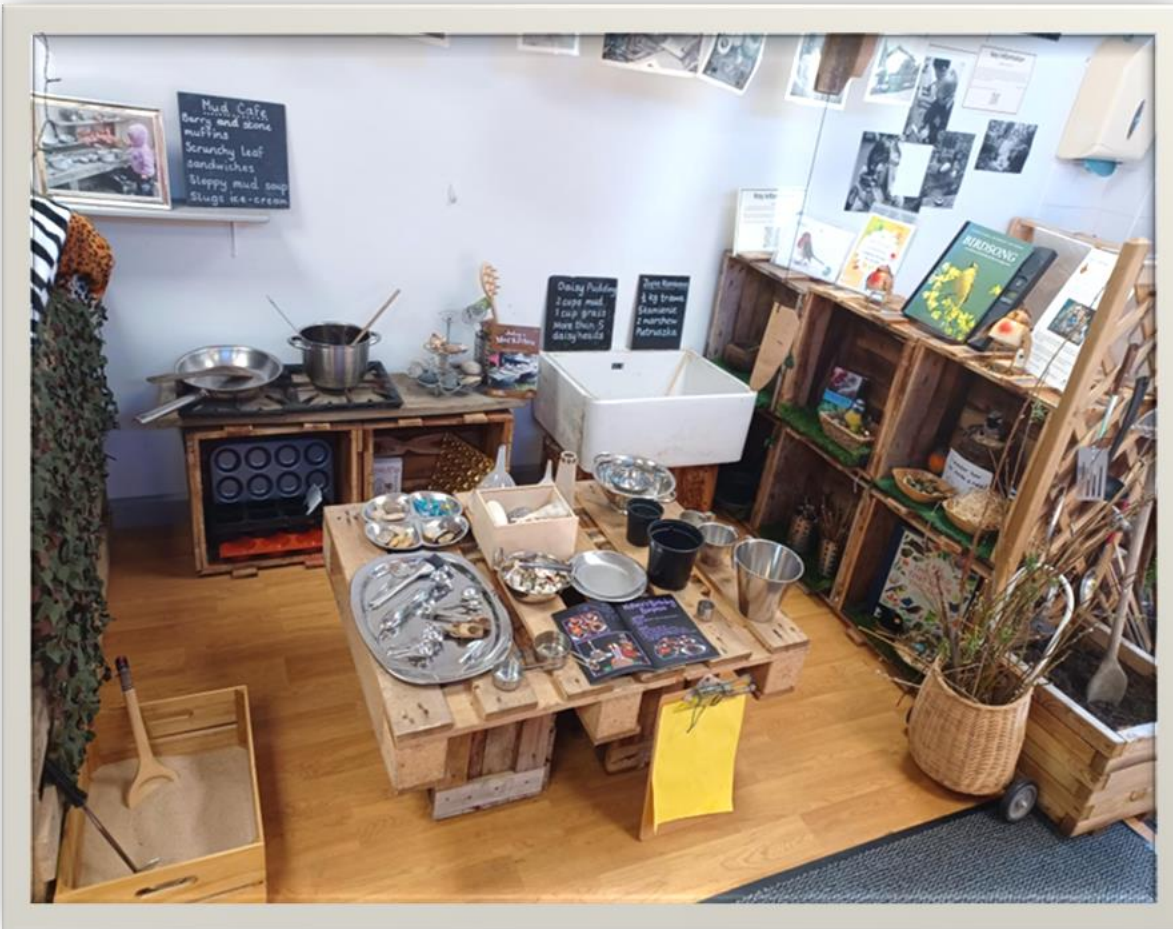


# Outdoor Environment Summer 2024



# Mud/Texture kitchen





Outdoor kitchen – making bird nests

# Nature table



# Transient art and symmetry



# Small world



# Schemas: Enveloping

## Publication:

### **A Window into Your Child's Learning (£20)**

Schemas provide a window into children's learning and this pack includes a wealth of information about these patterns of behaviour. The 12 individual cards look in detail at each schema exploring:

- what you might notice
- how to respond to extend children's thinking
- resource ideas

They are a must for anyone working with children from babies and beyond and can be used by practitioners and lent to parents to support their understanding.

[Order Form](#)





# Gardening

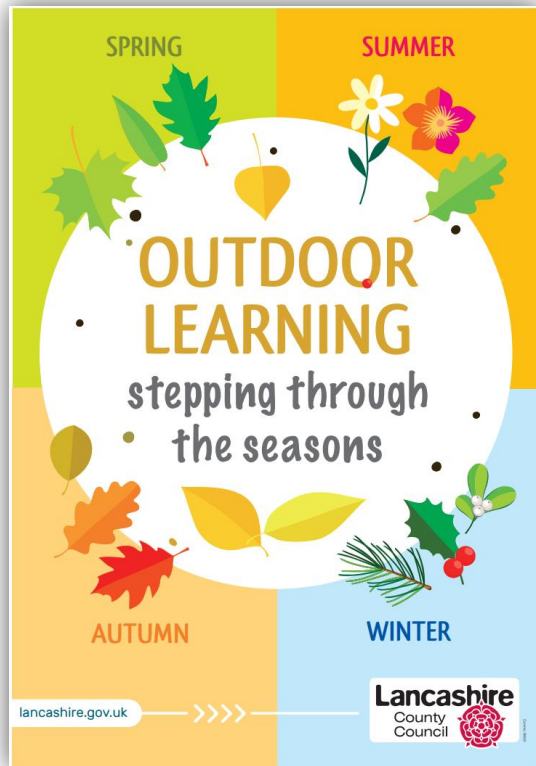


# Cosy spaces



\*New

- Publications for sale - Lancashire County Council



**What can we hear?**

**Links to learning**  
To distinguish one sound from another and begin to recognise bird song

**Resources**  
RSPB soft toy birds local to your area

1. Find out which birds visit your area
2. Sit children in a quiet space and encourage them listen to nearby sounds
3. Introduce bird sounds using RSPB birds encourage children to listen to local birds calling back

**10 Frame**

**Links to learning**  
To begin to develop the skills needed for sorting and subitising (counting with your eyes to instantly recognise quantities of objects)

**Resources**  
10 frame, collecting container and natural resources

1. Walk around local area collecting natural items to sort
2. Encourage the children to sort collections into types
3. With adult support encourage the children to order the collected items from 1-10 in the number frame