



Lancashire  
**Minerals & Waste**  
Local Plan

# Monitoring Report

June 2024

## Table of Contents

Introduction .....	4
The Implementation of the Local Development Scheme .....	4
Implementation of Minerals Policies - Limestone .....	5
Policy – CS3 - Provision will be made for the extraction of 57.8 million tonnes of limestone in the Joint Plan Area between 2001-2022.....	5
Planning permissions granted during plan period.....	5
Policy – CS3 - Provide 10 Year Landbank.....	5
Implementation of Minerals Policies - Gritstone .....	6
Policy – CS3 - Provision will be made for the extraction of 38.1 million tonnes of gritstone in the Joint Plan Area between 2001-2021 .....	6
Planning permission granted during plan period.....	6
Policy – CS3 - Provide 10 Year Landbank.....	6
Implementation of Minerals Policies - Sand and Gravel.....	7
Policy – CS3 - Provision will be made for the extraction of 10.8 million tonnes of sand and gravel in the Joint Plan Area between 2001-2021 .....	7
Planning permission granted during plan period.....	7
Policy – CS3 - Provide 7 Year Landbank.....	7
Implementation of Minerals Policies - other.....	8
Policy – CS3 - Production in Excess of 25% Triggers Review of Aggregate Apportionments.....	8
Policy – CS3 - Building stone, Brick shale, Limestone for Cement manufacture .....	8
Policy – CS1 - Mineral Safeguarding Areas.....	8
Implementation of Waste Policies - Landfill.....	9
Policy – CS7 - Provision will be made, as necessary, for the predicted total landfill capacity requirements for non-hazardous waste. ....	9
Planning permission granted during plan period.....	9
Implementation of Waste Policies - Built Waste Management Facilities .....	10
Policy – CS8 - Provision will be made for sufficient new waste management facilities to meet predicted waste capacity requirements.....	10
Planning permission granted during plan period.....	10
Planning Policy Review .....	13
Local Plan.....	13
Statement of Community Involvement.....	14
Implementation of the Duty to Cooperate.....	15

Appendix 1 - Waste planning applications and decisions.....	21
2023 Planning applications submitted and determined (01/04/2023 – 31/03/2024) ..	21
2022 Planning Permissions (01/04/2022 – 31/03/2023) .....	24
2021 Planning Permissions (01/04/2021 – 31/03/2022) .....	25
2020 Planning Permissions (01/04/2020 – 31/03/2021) .....	27
2019 Planning Permissions 1/4/2019 - 31/3/2020 .....	28
2018 Planning Permissions (1/4/2018 - 31/3/2019).....	30
2017 Planning Permissions (1/4/2017 - 31/3/2018).....	31
2016 Planning Permissions (1/4/2016 - 31/3/2017).....	33
2015 Planning Permissions (1/4/2015 - 31/3/2016).....	34
2014 Planning Permissions 1/4/2014 - 31/3/2015 .....	36
2013 Planning Permissions 1/4/2012 – 31/3/2013.....	38
2012 Planning Permissions 1/4/2012 – 31/3/2013.....	40
2011 Planning Permissions 1/4/2011 - 31/3/2012 .....	42
2010 Planning Permissions 1/4/2010 - 31/3/2011).....	43
2009 Planning Permissions (1/4/2009 - 31/3/2010).....	44
Appendix 2: Minerals Planning Applications.....	46

## Introduction

The production of a monitoring report is seen as the principal mechanism for assessing the performance of the Local Plan and its effects. This reflects the Government's 'plan, monitor, manage' approach to policy formulation.

Section 35 of the Planning and Compulsory Purchase Act (2004) requires every local planning authority to produce a monitoring report containing information on the implementation of the local development scheme, and the extent to which the policies set out in the local plan are being achieved.

Further detailed information on minerals and waste production and management, together with projections and scenarios, is available in the annual Local Aggregate Assessment and Local Waste Assessment.

## The Implementation of the Local Development Scheme

The timetable and key milestones for preparing the Local Plan are set out in the Local Development Scheme 2014-2020 (2018). It sets out a comprehensive list of the documents to be prepared and a timetable for preparing each document. Progress during the monitoring period is reported below.

<b>Stage in Local Plan Review</b>	<b>Timetable in Development Scheme 2014-18</b>	<b>Actual progress</b>	<b>Comment</b>
Scoping consultation	November-December 2014	November 2014	Completed on schedule
Pre-submission consultation	September-December 2018	September-December 2018	Completed on schedule
Submission	April 2019	-	Likely rescheduled to late 2024

As can be seen, the timetable in the Local Development Scheme is out of date. Notwithstanding the delays, there is also a need for an additional consultation stage prior to submission to allow for consultation on additional changes arising from comments submitted during the previous consultation stage. It is our intention to publish a revised Local Development Scheme identifying an updated timetable for consultations to include an additional pre-submission consultation to take place in late 2024.

## Implementation of Minerals Policies - Limestone

### Policy – CS3 - Provision will be made for the extraction of 57.8 million tonnes of limestone in the Joint Plan Area between 2001-2022

	Million Tonnes (MT)
Core Strategy estimate of annual demand	<b>2.75</b>
Core Strategy Apportionment 2001-2021	<b>41.25</b>
Production and sales 2001-2022	<b>50.16</b>
Permitted reserves at end of 2022	<b>43.59</b>
Therefore, additional to be released by 2021 (apportionment minus production minus reserves)	<b>0 (52.5mt surplus)</b>

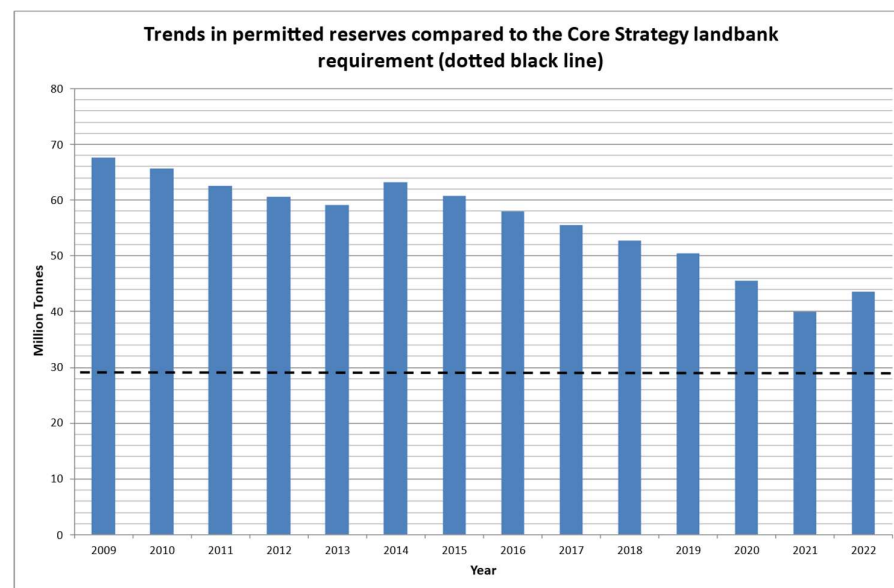
The 10-year average of production and sales (2.25mt), and the 3 year average of production and sales (2.52mt), described in the latest Local Aggregate Assessment, are key indicators in assessing the continued validity of the Core Strategy policies. Both are below the Core Strategy estimate of annual demand, indicating that the Core Strategy slightly overestimates demand.

### Planning permissions granted during the plan period

No planning permissions have been granted for the release of limestone for aggregate purposes during the plan period.

## Policy – CS3 - Provide 10 Year Landbank

These reserves can be expressed as 'landbanks' of minerals, representing the length of time they can be expected to last at estimated rates of use. Based on the 3-year average of production and sales contained in the latest Local Aggregate Assessment this permitted reserve represents a **19 year landbank**; well above the land bank of at least 10 years described in National Policy.



## Implementation of Minerals Policies - Gritstone

### Policy – CS3 - Provision will be made for the extraction of 38.1 million tonnes of gritstone in the Joint Plan Area between 2001-2021

	Million Tonnes
Core Strategy estimate of annual demand	1.81
Core Strategy Apportionment 2001-2021	38.1
Production and sales 2001-2022	23.92
Permitted reserves at end of 2022	74
Therefore, additional to be released by 2021 (apportionment minus production minus reserves)	0 (59.82 MT surplus)

The 10 years average of production and sales (1.04mt), and the 3 years average of production and sales (1.03mt), described in the latest Local Aggregate Assessment, are both below the Core Strategy estimate of annual demand, indicating that the Core Strategy significantly overestimates demand.

### Planning permission granted during plan period

Extension at Brinscall Quarry for approx. 1.16 million tonnes to provide for a local need for building stone and aggregates (2015). Extensions at Whinney Hill for approx. 3.35 million tonnes to avoid sterilisation of reserves by existing permitted works (2010 and 2014).

Extension at Tong Farm for approx. 0.76 million tonnes to provide for a local market need for construction materials (2011 and 2014).

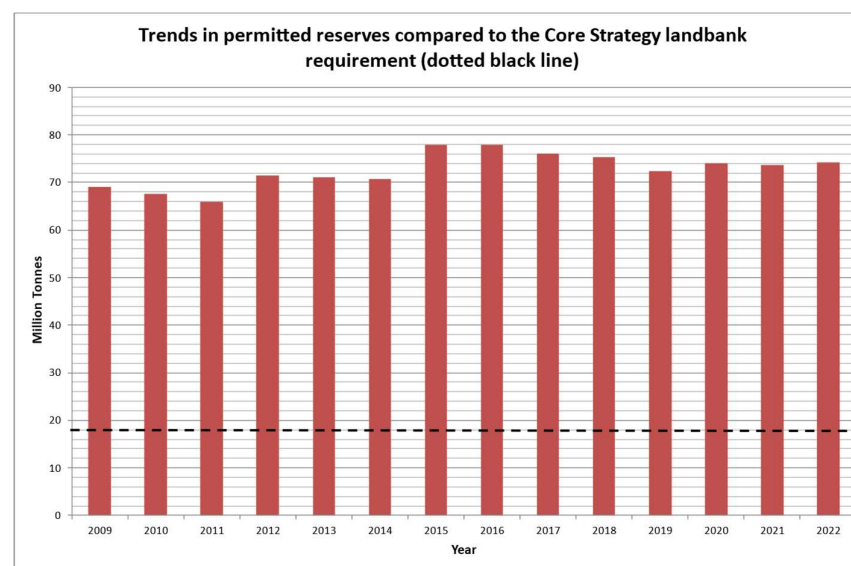
Extension at Tong Farm for approx. 1 million tonnes to provide for a local market need for construction materials (2020).

Proposal for an eastern lateral extension to Ellel Crag Quarry to supply gritstone and shale 1.79 million tonnes (2021).

Time extension at Waddington Fell Quarry to allow mineral working to continue until 2026 and restoration to be completed by 2027 (2024).

### Policy – CS3 - Provide 10 Year Landbank

These reserves can be expressed as 'landbanks' of minerals, representing the length of time they can be expected to last at estimated rates of use. Based on the 10-year average of production and sales contained in the latest Local Aggregate Assessment this permitted reserve represents an **71 year landbank**; well above the land bank of at least 10 years described in National Policy



## Implementation of Minerals Policies - Sand and Gravel

**Policy – CS3 - Provision will be made for the extraction of 10.8 million tonnes of sand and gravel in the Joint Plan Area between 2001-2021**

	Million Tonnes
Core Strategy estimate of annual demand	<b>0.5</b>
Core Strategy Apportionment 2001-2021	<b>10.8</b>
Production and sales 2001-2022	<b>8.2 (9.1 including marine)</b>
Permitted reserves at end of 2022	<b>4.46</b>
Therefore, additional to be released by 2021 (apportionment minus production minus reserves)	<b>0 (2.76mt total surplus)</b>

The 10 years average of production and sales (0.37mt), and the 3 years average of production and sales (0.14mt), are described in the latest Local Aggregate Assessment, are both around the Core Strategy estimate of demand.

### Planning permission granted during plan period

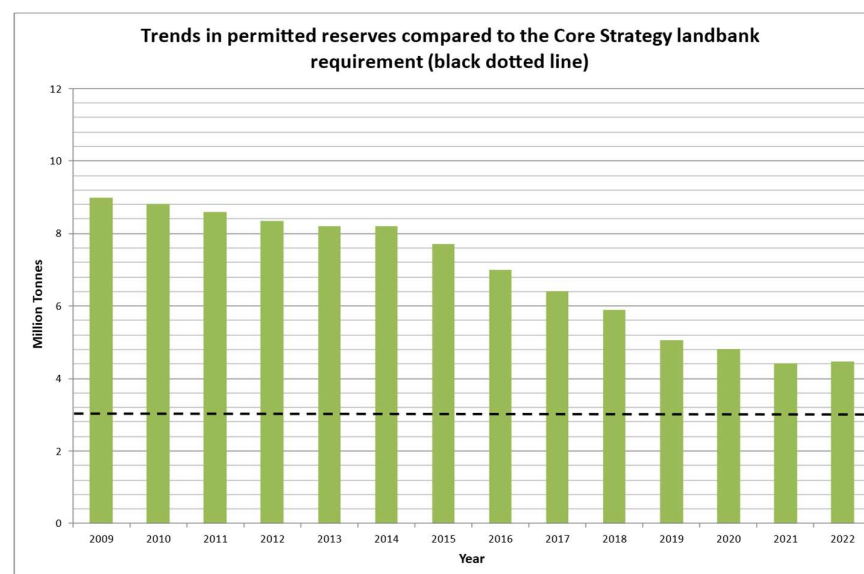
Extension at Sandons Farm for approx. 100,000 tonnes to avoid sterilisation of reserves by existing permitted works (2015) and approx. 103,000 tonnes with associated time extension to 2020 (2017). This will be followed by infilling with inert waste (75,000m<sup>3</sup>) for restoration purposes.

Extension at Bradleys Sandpit for approx. 700,000 tonnes to provide for short term need (2009).

Time extensions to Lydiate Lane to 2020, and Lower Brockholes to 2017 (both 2016), and Sharples/Tarnacre to 2027 (2018) Extension at Clayton Hall for approximately 120,000 tonnes (2015).

### Policy – CS3 - Provide 7 Year Landbank

These reserves can be expressed as 'landbanks' of minerals, representing the length of time they can be expected to last at estimated rates of use. Based on the 10-year average of production and sales contained in the latest Local Aggregate Assessment this permitted reserve represents a **12-year landbank**; above the land bank of at least 7 years described in National Policy.



## **Implementation of Minerals Policies - other**

### **Policy – CS3 - Production in Excess of 25% Triggers Review of Aggregate Apportionments**

No new information was available on recycled or secondary aggregate production. Existing data relating to capacity and sales of recycled aggregates are still not reliable, notwithstanding that considerable efforts have been made to address the issue.

### **Policy – CS3 - Building stone, Brick shale, Limestone for Cement manufacture**

Existing data relating to capacity and sales is not available. National planning guidance published since the adoption of the Core Strategy only requires that landbanks for industrial minerals should be calculated when a new planning application is submitted.

Planning permissions granted in the period are as follows. A new release of limestone for cement manufacture through the deepening of Lanehead quarry was granted, for 10 million tonnes, in 2014 (s106 signed 2019).

Time extension at Claughton Manor Brickworks to 2036.  
Extension at Tong Farm for approx. 0.27 million tonnes fire clay ancillary to the working of sandstone (2020).

Extension of capacity for 36,193 m<sup>3</sup> Sandstones/Gritstone Shale for brickmaking at Ravenhead Quarry (2022).

Extension at Ellel Cragg Quarry approx. 1.76 million tonnes (2021) combined with shales for use in brick manufacture.

### **Policy – CS1 - Mineral Safeguarding Areas**

MSA's are reflected on the policy map of local planning authorities as they are adopted.



## Implementation of Waste Policies - Landfill

### Policy – CS7 - Provision will be made, as necessary, for the predicted total landfill capacity requirements for non-hazardous waste.

The Core Strategy predicts that sufficient landfill capacity is available to meet needs during the plan period.

Landfilled Type	Remaining Capacity @ end of 2022 (,000m <sup>3</sup> )	Core Strategy Estimated Demand 2013-2022	Therefore, additional to be released by 2022
Hazardous	1,684	-	-
Non Hazardous*	6,993++	4,481	-
Inert <sup>†</sup>	2,632	-	-

\* Some non-hazardous sites can accept some Stable Non-Reactive Hazardous Wastes (SNRHW) (principally asbestos) into a dedicated cell, but this is a small part of the overall capacity of the site.

<sup>†</sup> There are also numerous sites operating under exemptions, or as part of wider permits, that also accept inert waste for disposal to land.

++ Not including 6 million tonnes capacity at Whinney Hill that has permission but where the void has not been excavated yet.

## Planning permission granted during plan period

Time extension to 2035 at Clifton Marsh (2015).

Extension (as a nationally significant infrastructure project) at Whitemoss Hazardous Landfill site for 150,000 tonnes per year (2015).

Time extension to 2028 at Woods Waste (2018), also changing a majority of the capacity from non-hazardous to inert.

Whinney Hill Landfill site (the Global Scheme), planning permission granted, outstanding S106 agreement for 3.3 million tonnes (2015).

Extension at Tong Farm for approx. 0.58 million m<sup>3</sup> for inert (2020)

Extension At Ellel Quarry for approx. 0.88 million m<sup>3</sup> for inert (2021)

An application submitted by United Utilities at Waddington Fell Quarry was granted to substitute the source of material used for quarry restoration with up to 1.57million tonnes of arisings and waste from the Haweswater Aqueduct Resilience Project (HARP) which is not considered to be new capacity (2022).

## Implementation of Waste Policies - Built Waste Management Facilities

### Policy – CS8 - Provision will be made for sufficient new waste management facilities to meet predicted waste capacity requirements

The table below describes the new waste management capacity granted planning permission between 1 April 2009 and 31 March

2024. The majority related to changes of use from existing industrial or agricultural uses to waste management.

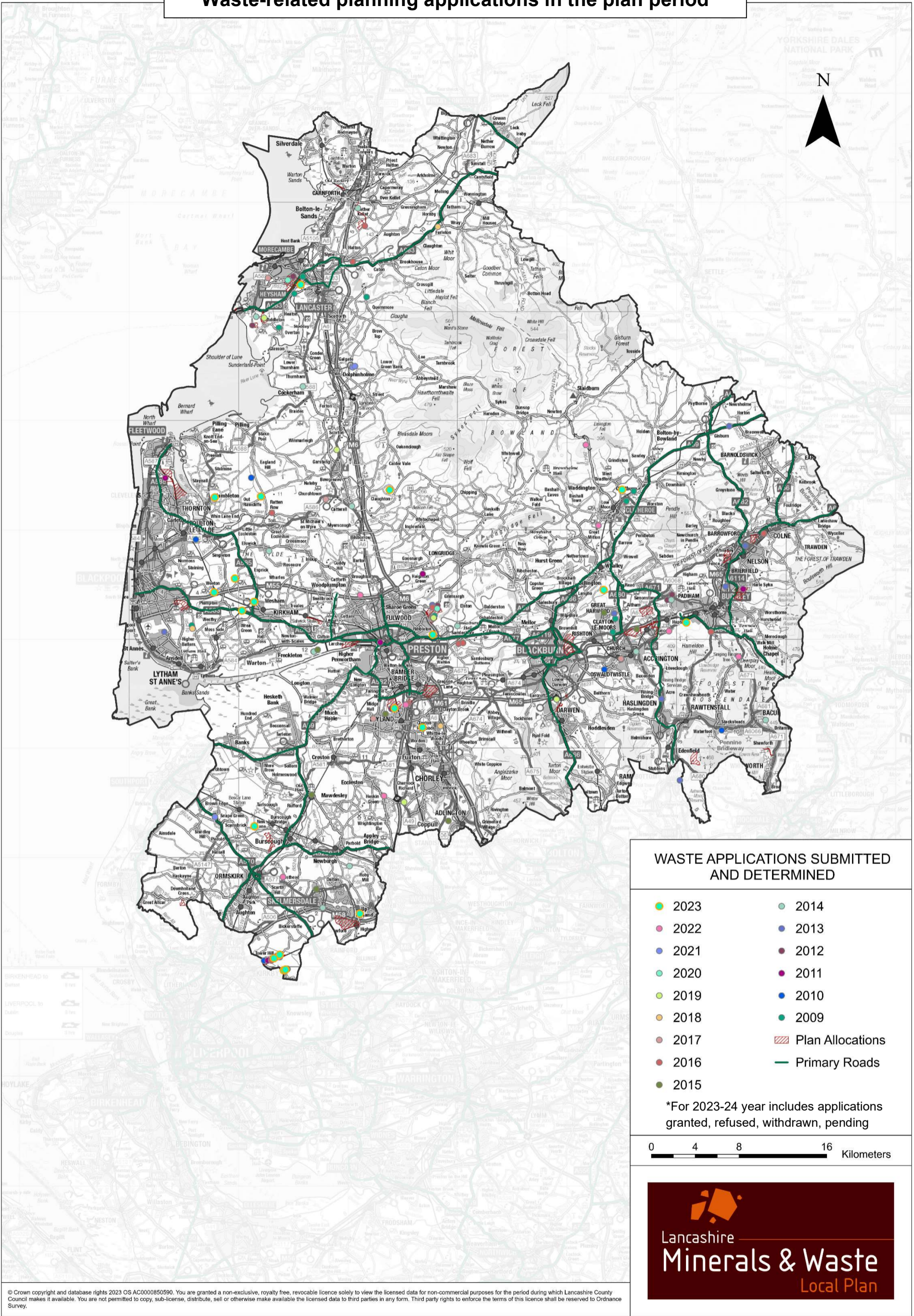
### Planning permission granted during plan period

Waste facility type	Tonnes per year permitted															Total
	2009	2010	2011	2012	2013	2014	2015	2016	2017	2018	2019	2020	2021	2022	2023	
General waste transfer and recycling	279,500	110,000	82,908	85,200	156,000	21,000	10,000	12,500	121,045			12	15,000	150,000	75,000	1,118,165
End of life vehicle	2,900	3,000		75,080	685	75,200	154	150	150							157,319
Metal recycling			1,200		3,000		3,000				500					7,700

Waste facility type	Tonnes per year permitted															Total
	2009	2010	2011	2012	2013	2014	2015	2016	2017	2018	2019	2020	2021	2022	2023	
Incineration / Energy from Waste									7,500		395,000 <sup>1</sup>				24,000	426,500
Plastic recycling	120															120
Inert waste transfer and recycling	252,700		500,000	75,000	75,000	145,000	75,000	78,000	75,000	100,000		75,000		25,000		1,475,700
Anaerobic digestion					56,000	40,555		24	2,000			100,000		100,000	18,000	316,579
Windrow composting				200,000		40,000			275,000							515,000
Waste electrical and electronic equipment												25,000				25,000

<sup>1</sup> Previously reported capacity of 1,225,000T (2019) energy from waste reduced to 395,000T owing to planning permission lapse ref: (Lancashire) LCC/2019/0021 for 330,000T and ref: (Blackburn) 10/19/495 for 500,000T per year.

# Waste-related planning applications in the plan period



## WASTE APPLICATIONS SUBMITTED AND DETERMINED

- 2023
- 2022
- 2021
- 2020
- 2019
- 2018
- 2017
- 2016
- 2015
- 2014
- 2013
- 2012
- 2011
- 2010
- 2009
- ▨ Plan Allocations
- Primary Roads

\*For 2023-24 year includes applications granted, refused, withdrawn, pending



© Crown copyright and database rights 2023 OS AC0000850590. You are granted a non-exclusive, royalty free, revocable licence solely to view the licensed data for non-commercial purposes for the period during which Lancashire County Council makes it available. You are not permitted to copy, sub-license, distribute, sell or otherwise make available the licensed data to third parties in any form. Third party rights to enforce the terms of this licence shall be reserved to Ordnance Survey.

## Planning Policy Review

Paragraph 10a of the Town and Country Planning (Local Planning) Regulations 2012 requires that Local Planning Authorities must complete a review of their local plan and statement of community involvement within every 5 years. The purpose of this review, as set out in the National Planning Practice Guidance (Paragraph: 064 Reference ID: 61-064-20190315), is to determine whether the policies or plan as a whole remain effective or need to be updated. This process will include a consideration of any changes to

social/economic/environmental priorities, national policy or regulations, and local circumstances (in particular as set out in the local aggregate assessment and local waste assessment).

### Local Plan

A review of the local plan is ongoing.

Priorities	National policy or regulation	Local circumstances
IPPC 6 <sup>th</sup> assessment report into climate change identifies clear link between human activities and climate change, and sets out urgent need for change	CCC 6th Carbon Budget identifies specific areas in the waste management industry that need action	Most sand quarries near end of operational life
Covid-19 economic impact and Government recovery programme.	National Planning Policy Framework revised (2018, 2021, 2023).	x3 significant energy from waste planning permissions granted in plan area, x2 have since lapsed.
Government setting into law net-zero carbon target.	National Waste Strategy Our Waste Our Resource revised	Euxton sand quarry still not operational (at 2024).
Government moratorium on fracking for shale gas	Clean Growth Strategy published	Proportion of gritstone reserve held in 1 quarry still large.
Waste import/export bans introduced by China and other international markets	Clean Air Strategy published	Work at St Annes Foreshore sand quarry ceased (at 2024)
	National Planning Policy for Waste revised	Whilst policy is still effective with reference to up to date information, the estimates of need set out in policy need updating.
	25 Year Environment Plan published	
Levelling up and Regeneration Act introduces changes to the plan making process	Growing the bio-economy published	
	Biodiversity net gain enacted	

## Statement of Community Involvement

Adopted in 2017. Minor changes identified in development management section.

<b>Priorities</b>	<b>National policy or regulation</b>	<b>Local circumstances</b>
No significant changes relevant to the contents of the SCI	No significant changes relevant to the contents of the SCI	The Covid-19 emergency measures have in large part been withdrawn, so no change is necessary to the SCI.  Updates to development management section have been identified, to be consulted and updated 2024.

## Implementation of the Duty to Cooperate

Mechanism	Date	Organisation	Issue	Outcome
Email	03/04/2014	Northwest and export/import minerals planning authorities	Circulate Local Aggregate Assessment for comment	No response
Email	20/05/2014	NWWN	Reported on the commencement of the local plan review, inviting comments	No comments
Meeting	11/07/2014	Merseyside Environmental Advisory Service	Discussed need to include minerals and waste movements within local plan review	No comments
Meeting	09/10/2014	Lancaster City Council	Mineral safeguarding areas	City Council to include MSAs in site appraisal process
Email	30/10/2014	Greater Manchester and Merseyside	Local Aggregate Assessment consultation	Respond to LAA about local projected demand based on significant levels of importation
Email	04/11/2014	Export/Import minerals planning authorities	Local Aggregate Assessment	No comments
Email	07/11/2014	Statutory and Neighbour and other affected	Local Plan Review – minerals and waste movements	No comments
Meeting	10/12/2014	Aggregate Working Party	Regional minerals planning update	No comments
Meeting	21/01/2015	Fylde Coast Planning Authorities	Shale gas update	No comments
Meeting	27/01/2015	Northwest Waste Network	Regional waste planning update	No comments
Meeting	29/01/2015	NuLeAF	Low level nuclear waste update	Draft Plan to continue to address LLW explicitly
Email	30/01/2015	Aggregate Working Party	Respond to AMR/LAA report	
Email	22/05/2015	GMGU	Fletcher Bank, contribution to Manchester need	Fletcher Bank continues to be in GM survey. Draft plan to include reference

<b>Mechanism</b>	<b>Date</b>	<b>Organisation</b>	<b>Issue</b>	<b>Outcome</b>
				to Fletcher Bank contribution to GM needs.
Email	02/07/2015	Lancaster City Council	Coating plants and safeguarding in the City Council Local Plan	Lancaster updated on our emerging approach, and the need for them to be mindful of minerals operations when considering land allocations
Meeting		Northwest Development Plan Officers Group	Mineral safeguarding update	District councils to include mineral safeguarding areas on their policy maps
Phone call	29/02/2016	Burnley Borough Council and NLP	Employment land allocations and waste needs	
Meeting	14/03/2016	Aggregate Working Party	Regional minerals planning	No comments
Meeting	21/04/2016	Rossendale Borough Council	MSA and housing allocations, coating plant safeguarding, employment land and waste	LCC to share MSA guidance, RBC to include MSA in site assessments, RBC to share employment methodology
Meeting	20/10/2016	Lancaster CC	Lancaster Local Plan and conformity with minerals policies	No comments
Meeting	20/12/2016	Aggregate Working Party	Regional minerals planning	No comments
Email	15/02/2017	Aggregate Working Party and functionally linked authorities	Invitation to comment on draft Local Aggregate Assessment	Some comments received, logged, and minor changes made to the LAA
Email	27/02/2017	Lancaster CC	Coating plant safeguarding in the Local Plan	Lancaster CC updated on the emerging draft policy
Meeting	15/06/2017	Rossendale Borough Council	Mineral safeguarding areas and housing allocations	Rossendale updated on the emerging policies of the minerals and waste plan regarding coating and batching plant safeguarding, and guidance provided



<b>Mechanism</b>	<b>Date</b>	<b>Organisation</b>	<b>Issue</b>	<b>Outcome</b>
				on addressing and documenting MSAs as part of the site appraisal process.
Meeting	22/06/2017	West Lancashire District Council	General. Use of district industrial land allocations in waste local plan policies	Minuted. West Lancashire are comfortable with the approach
Meeting	28/06/2017	Aggregate Working Party	General	Industry express concerns about mineral sterilisation, and development in proximity to coating and batching plant.
Email	14/08/2017	Wyre Borough Council	Query about growth rates used	None
Meeting	16/10/2017	Aggregate Working Party	General. Approval of Joint Lancashire Minerals and Waste Local Aggregate Assessment	Minuted. Approved
Email	12/04/2018	AWP and linked authorities	Comments on LAA	No changes
Meeting	08/06/2018	Rosendale BC	Minuted D2C - waste on employment sites, MSA, district doesn't need to address m or w in infrastructure plan	No changes. ok with approach both ways
Meeting	11/07/2018	Rosendale BC	Minuted - MSA Coal	No changes
Meeting	09/06/2018	AWP	LAA	Change to projections in LAA to better reflect projected economic growth
Meeting	12/06/2018	NWWN meeting	Landfill capacities etc	Prepare MoU, plan for net self-sufficiency, plan policy positive for new landfill
Email	12/10/2018	Publication invitation email	Invited to submit strategic issues	Consultation responses, no formal duty to cooperate requests
Meeting	22/11/2018	AWP	Minuted	Ratify LAA
Meeting	15/11/2018	Presentation to Lancashire Waste Partnership	Minuted	No comments

<b>Mechanism</b>	<b>Date</b>	<b>Organisation</b>	<b>Issue</b>	<b>Outcome</b>
Meeting	05/03/2019	Lancaster CC local plan minerals and waste meeting	South Carnforth, Heysham Port, MSA, SoCG	draft SoCG for Lancaster CC local plan
Email	12/04/2019	GM Merseyside and Warrington LAA	GM LAA consultation	Submit comment on insufficient assessment of demand
Meeting	23/04/2019	West Lancashire Borough Council D2C	Discuss representations received during consultation	LCC agreed to look at some changes to reflect comments
Meeting	16/10/2019	AWP	Minuted. Std agenda. MSA and proximal sterilisation. Lancaster inquiry.	LAA revisions and ratification.
Email	25/03/2020	Cheshire East LAA	Comment on lack of quantification of shortfall.	
Meeting	20/05/2020	AWP	Minuted. Warrington SoCG	
Email	03/07/2020	GM Merseyside and Warrington LAA	Comment on inadequacy of assessment of demand	
Meeting	05/11/2020	AWP	minuted. LAA of CE issues reiterated. LAA of GMetc issues discussed	
Meeting	07/12/2020	Crown Estate NWMPAs	Minuted	potential for and issues around marine dredged discussed
Meeting	07/01/2021	NWWN meeting	Minuted	further work needed on joint position of information on landfill and EfW capacity
Meeting	29/06/2021	AWP	Minuted	
Meeting	08/07/2021	NWWN meeting	Minuted	
Meeting	20/07/2021	Pendle D2C meeting	Minuted	some changes to draft Plan agreed to resolve issues
Meeting	21/07/2021	Fylde D2C meeting	Minuted	some changes to draft Plan agreed to resolve issues
Meeting	27/07/2021	Wyre D2C meeting	Minuted	some changes to draft Plan agreed to resolve issues
Meeting	02/08/2021	Hyndburn D2C meeting	Minuted	some changes to draft Plan agreed to resolve issues

<b>Mechanism</b>	<b>Date</b>	<b>Organisation</b>	<b>Issue</b>	<b>Outcome</b>
Meeting	03/08/2021	Rosendale D2C meeting	Minuted	some changes to draft Plan agreed to resolve issues
Meeting	02/08/2021	Central Lancashire D2C meeting	Minuted	some changes to draft Plan agreed to resolve issues
Meeting	04/08/2021	Lancaster D2C meeting	Minuted	some changes to draft Plan agreed to resolve issues
Meeting	11/08/2021	Burnley D2C meeting	Minuted	some changes to draft Plan agreed to resolve issues
Email	03/08/2021	LAA consultation with neighbours and functionally linked authorities		Minor changes to LAA
Meeting	24/11/2021	NWAWP	Minuted	LAA ratified
Meeting	26/11/2021	Ribble Valley D2C meeting	Minuted	some changes to draft Plan agreed to resolve issues
Meeting	13/01/2022	NWAWP Marine Planning and Crown Estates	Minuted	
Meeting	10/03/2022	NWAWP Marine Planning	Minuted	
Meeting	30/06/2022	NWAWP		
Email	26/07/2022	Aggregate Working Party and functionally linked authorities	Circulate draft LAA for comment	Comments noted in LAA appendix, changes made where appropriate
Meeting	06/10/2022	NWWN		
Email	21/10/2022	NWAWP	LAA for ratification	Ratification of Joint Lancashire LAA
Meeting	30/11/2022	NWAWP		
Meeting	02/02/2023	NWWN		
Meeting	06/06/2023	NWAWP		

<b>Mechanism</b>	<b>Date</b>	<b>Organisation</b>	<b>Issue</b>	<b>Outcome</b>
Email	19/07/2023	Aggregate Working Party and functionally linked authorities	Circulate draft LAA for comment	Comments noted in LAA appendix, changes made where appropriate
Meeting	07/09/2023	NWWN		
Email	12/09/2023	NWAWP	LAA for ratification	Ratification of Joint Lancashire LAA
Meeting	16/11/2023	NWWN		Commitment to prepare NW landfill position paper
Meeting	22/11/2023	NWAWP		
Meeting	29/02/2024	NWWN	Minuted	Commitment to prepare NW landfill and EfW position papers
Meeting	07/03/2024	NWAWP		
Meeting	13/06/2024	NWAWP		

## Appendix 1 - Waste planning applications and decisions

### 2023 Planning applications submitted and determined (01/04/2023 – 31/03/2024)

Reference	Location	Proposal	Status	Date	Type	Throughput Tonnes per annum (TPA)
BC 24/0003	Former Marton Gas Holding Site, Blackpool	Erection of a new waste treatment building, siting of portacabin style offices and welfare facilities and installation of a soil washing plant	Pending	-	General waste transfer	
LCC/2023/0043	Ravenhead Quarry, Up Holland	Restoration of Ravenhead Quarry through the importation of non-hazardous material	Pending	-	Landfill	
LCC/2023/0042	Land at Simonswood Moss	Improvements to the existing compost product storage area	Withdrawn	March 2023	Composting	N/A
LCC/2023/0033	Bank Farm, Burscough	Change of use from agriculture to waste management including the sorting, storage and distribution of non-hazardous waste, and siting of two containers	Refused	January 2024	General waste transfer	
LCC/2023/0026	Bank Farm, Burscough	Change of use of agricultural building and yard to waste management - the sorting, storage, recycling and distribution of non-hazardous waste, and 2 no. buildings	Refused	January 2024	Inert transfer and recycling	N/A
LCC/2023/0025	Heys Farm, Whalley	Engineering operations for improved agricultural access including the importation of inert soil/stone to level ground	Granted	March 2024	Inert to land	1,385
LCC/2023/0024	Hapton Valley Transfer Station	Demolition of building and construction and operation of an embedded waste fuel gasification and combined heat and power generation facility, utilising densified waste derived fuels	Granted	November 2023	Incineration/EFW	24,000
LCC/2023/0022	Simonswood Industrial Estate	Retrospective Application for the change of use of land to site for processing and recycling of inert waste.	Refused	October 2023	Inert transfer & recycling	N/A
LCC/2020/0024	Land at Simonswood Moss Kirkby	The import of subsoil, topsoil, organic matter and aggregates to restore land levels to improve the site for agricultural use, with ancillary infrastructure	Withdrawn	October 2023	Inert to land	N/A
LCC/2023/0021	Ribblesdale Works, Clitheroe	Installation of solid recovered fuel facility, two trailer docking stations, two buildings, bag filter structure, dosing unit building, conveyors and pipeline linking the dosing unit to main burner.	Refused	October 2023	Incineration/EFW	N/A

Reference	Location	Proposal	Status	Date	Type	Throughput Tonnes per annum (TPA)
LCC/2023/0020	Land at Stopgate Lane	Change of use to storage of inert waste material and product mounds as an extension to waste transfer station	Pending	-	Inert transfer and recycling	
LCC/2023/0019	Clayton Hall Landfill Site	Retention of the Waste Transfer Station, Leachate Plant, Gas Plant and Related Infrastructure.	Granted	September 2023	Landfill	Time extension for completion
LCC/2022/0065	Stanley Villa Farm, Weeton with Preese	Proposed Anaerobic Digestion plant including digester / gas holder and equipment, relocated flare, new earth banking / perimeter landscaping and underground gas export pipeline	Granted	December 2023	Anaerobic Digestion	18,000
LCC/2022/0061	Salt Ayre Recycling & Transfer Facility	The permanent retention of a materials recycling & transfer facility	Granted	April 2023	General waste transfer & recycling	75,000
LCC/2022/0043	Highfield Farm Fisheries	Infilling of a lake and change of use to allow the siting of 28 static holiday caravan pitches and associated infrastructure	Granted	April 2023	Inert to land	11,000
LCC/2022/0041	Land in Lea, Cottam & Northwest Preston	Amendment to approved plans listed in condition 2 of pp. ref LCC/2016/0046 to permit a revision of the screening mounding and landscaping alongside the Preston Western distributor road	Granted	April 2023	Inert to land	200,000
LCC/2021/0061	Ream Hills Farm, Preese	Raise levels of field with inert fill	Refused	December 2023	Inert to land	No change to capacity
LCC/2023/0033	Bank Farm, Burscough	Change of use from agriculture to waste management including the sorting, storage and distribution of non-hazardous waste, and two containers	Refused	January 2024	General waste transfer & recycling	N/A
LCC/2023/0026	Bank Farm, Burscough	Change of use of agricultural building and yard area from agriculture to waste management including the sorting, storage, recycling and distribution of non-hazardous waste, and including two ancillary buildings	Refused	January 2024	General waste transfer & recycling	N/A
LCC/2020/0024	Land at Simonswood Moss	The import of subsoil, topsoil, organic matter and aggregates to restore land levels to improve the site for agricultural use with ancillary infrastructure	Withdrawn	October 2023	Inert to land	No change to capacity

Reference	Location	Proposal	Status	Date	Type	Throughput Tonnes per annum (TPA)
LCC/2023/0022	Former Haulage Yard, Simonswood Industrial Park	Retrospective Application for the change of use of land to site for processing and recycling of inert waste.	Refused	October 2023	Inert transfer and recycling	N/A

## 2022 Planning Permissions (01/04/2022 – 31/03/2023)

Reference	Location	Proposal	Status	Date	Type	Throughput Tonnes per annum (TPA)
BwDC 10/22/1006	Suez Recycling and Recovery Park	Demolition of waste management operations, relocation of waste transfer station and materials recycling facility and erection of anaerobic digestion facility (Resubmitted planning application – planning permission 10/19/0495 refers)	Granted	March 2023	Anaerobic digestion	No change – previously consented
LCC/2021/0062	Tower House, Stopgate Lane, Simonswood	Change of use of site to storage of reclaimed material mounds as an extension to the existing waste transfer station	Withdrawn	April 2022	General waste transfer & recycling	N/A
LCC/2022/0029	Thorney Bank Industrial Estate	Change of use to a waste transfer station for sorting and bulking of skip waste	Granted	July 2022	Inert waste transfer & recycling	25,000
LCC/2022/0025	Deerplay Landfill Site, Bacup Road, Cliviger	Variation of conditions 1, 3, 10, 27, 28 and 29 of planning permission 12/06/0959 to allow landfilling to continue to 31st December 2029 and restoration by 31st December 2030	Granted	July 2022	Landfill	Time extension for completion
LCC/2021/0059	Bradleys Sand Pit, Lightfoot Green Lane, Fulwood	Variation of condition 2 of permission LCC/2017/0019 to allow the continuation of mineral landfill and waste transfer activities until 31 December 2029 with restoration by 31 December 2031	Granted	May 2022	Landfill	Time extension for completion
LCC/2021/0015	Waddington Fell Quarry, Slaidburn Road, Waddington	Revised quarry restoration scheme incorporating tunnel arisings from the Haweswater Aqueduct resilience programme (HARP) namely the Bowland and Marl Hill Tunnel sections	Granted	January 2023	Landfill	1,575,000
LCC/2019/0069	Hapton Valley Transfer Station	Change of use of end of life vehicle building to use for the drying and pelletising of waste solid recovered fuel (SRF), construction of 2x20m high flues, construction of underground ducting to transfer warm air from boiler to the pelletising building, and storage of baled SRF	Granted	February 2023	General waste transfer & recycling	150,000



## 2021 Planning Permissions (01/04/2021 – 31/03/2022)

Reference	Location	Proposal	Status	Date	Type	Throughput Tonnes per annum (TPA)
LCC/2021/0045	410 Southport Road, Scarisbrick	Retrospective change of use from haulage yard to waste recycling (skips).	Granted	March 2022	General waste transfer & recycling	15,000
LCC/2019/0040	Ellel Crag Quarry, Bay Horse Road, Ellel	Variation of condition 1 of planning permission 01/08/0629 to amend the time scale for the completion of landfilling of Ellel Crag Quarry from 30 June 2023 to 30 June 2038, with the whole of the site to be finally restored by 30 June 2039, or within 12 months from the cessation of landfilling operations, whichever is the sooner.	Granted	December 2021	Landfill	Time extension for completion
LCC/2019/0030	Ellel Crag Quarry, Bay Horse Road, Ellel	Proposed eastern lateral extension to the existing gritstone and shale quarry followed by infilling of the excavation with imported inert waste to be completed by the 30 June 2038, together with the rebuilding and extension of the derelict farmhouse for use as site office accommodation, with the whole of the site to be finally restored by 30 June 2039, or within 12 months from the cessation of landfilling operations, whichever is the sooner.	Granted	December 2021	Landfill	1,672,000
LCC/2019/0066	Land Off Old Road, Chatburn	Retrospective application to regularise the importation of soils for use in ground stabilisation and landscaping works associated with the consented residential development.	Granted at appeal	May 2021	Inert to land	3,500
LCC/2022/0003	Culzean W2E Ltd, Simonswood Industrial Park	Demolition of existing building and erection of purpose-built building (and ancillary structures) to house high temperature treatment facility for the management of medical waste.	Pending	-	Hazardous and non-hazardous waste treatment	
LCC/2021/0058	Dunald Mill Quarry, Nether Kellet,	Amendment of condition 1 of permission 1/97/1298 to allow continuation of mineral extraction until 21 February 2034 with site restoration being completed by 21 February 2035.	Pending	-	Landfill	
LCC/2021/0033	Burn Hall Waste Transfer Station, Fleetwood	Amendment to condition 7 of planning permission LCC/2014/0145 to allow the site to accept household waste in addition to the existing permitted waste inputs of commercial and industrial waste.	Granted subject to S106	-	General waste transfer and recycling	
LCC/2021/0025	Unit 3e Bolton Avenue Huncoat	Erection of a building for metal storage and processing facility.	Withdrawn	June 2021	Metal recycling	N/A

Reference	Location	Proposal	Status	Date	Type	Throughput Tonnes per annum (TPA)
LCC/2020/0038	Sandholme Mill Barnacre with Bonds	Creation of a bund including installation of field drainage system and associated landscape.	Withdrawn	April 2021	Inert to land	N/A
LCC/2021/0008	Height Side Farm, Todmorden Road, Bacup	Erection of new building and formation of hardstanding area for use as a site for the sorting and recycling of skip waste	Refused	June 2021	General waste transfer and recycling	N/A
LCC/2020/0023	The Laurels Golf Course, Charnock Richard	Application for remodelling of Charnock Richard golf course incorporating the reconfiguration of 9 holes and localised raising of levels using imported inert waste without complying with condition 11 of permission LCC/2019/0054	Refused	June 2021	Inert to land	N/A

## 2020 Planning Permissions (01/04/2020 – 31/03/2021)

Reference	Location	Proposal	Status	Date	Type	Throughput Tonnes per annum (TPA)
BwDC 10/19/0495	Suez Recycling and Recovery Park	Demolition of waste management operations, relocation of waste transfer station and materials recycling facility and erection of anaerobic digestion facility	Granted	August 2019	Anaerobic digestion	100,000
LCC/2020/0053	Unit 21-22 Roman Way, Preston	Change of Use of land and buildings to a sui generis waste recycling use for the recycling and storage of waste electronic and electrical equipment plastic.	Granted	January 2021	WEEE recycling	25,000
LCC/2020/0051	Willow House Farm, Thornton-Cleveleys	Change of Use of agricultural land to site for recycling of inert wastes	Refused	March 2021	Inert transfer & recycling	N/A
LCC/2020/0040	Thomas Graham and Sons - Northgate Business Park, White Lund Industrial Estate	Retrospective application for a waste transfer station for offensive waste - mainly non-clinical hygiene waste.	Granted	October 2020	General waste transfer and recycling	12
LCC/2020/0029	Former Hanson PLC Site, White Lund Industrial Estate	Change of Use of land to a waste transfer station as an extension to the existing waste management site/ waste transfer station and skip business.	Granted	August 2020	Inert transfer & recycling	75,000
LCC/2020/0018	Tong Quarry, Tong Lane, Bacup	Extension of quarry with restoration by means of infill with inert construction demolition and excavation waste together with ancillary activities, and the consolidation of existing planning permission.	Granted	November 2020	Landfill	580,000m <sup>3</sup>

## 2019 Planning Permissions 1/4/2019 - 31/3/2020

Reference	Location	Proposal	Status	Date	Type	Throughput Tonnes per annum (TPA)
LCC/2019/0054	Charnock Richard Golf Course	Remodelling of Charnock Richard golf course incorporating the reconfiguration of 9 holes and localised raising of levels using imported inert materials	Granted	January 2020	Inert to land	26,000
LCC/2019/0055	Land at Winmara, Lancaster New Road, Cabus	Change of use of buildings to create a metal transfer station (sui generis) and ancillary office	Granted	January 2020	Metal recycling	500
LCC/2019/0044	Clear Water Fisheries, Over Kellet	Creation of a bund	Withdrawn	October 2019	Inert to land	N/A
LCC/2019/0035	Moss Farm, Newton with Clifton	Creation of a bund	Withdrawn	August 2019	Inert to land	N/A
LCC/2019/0033	The Orchard Cabus	Excavation of material and creation of fishing lake	Withdrawn	July 2019	-	N/A
LCC/2019/0029	Land at Red Scar Industrial Estate	Energy recovery facility (ERF) fuelled by non-hazardous household, commercial and industrial waste and refuse derived fuel incorporating ERF building, air cooled condensers, weighbridges and gatehouse, site roads, landscaping, bunds, car parking, surface water swale and wetland, electricity sub-station building and switchyard, pump house, fire water storage tanks, other ancillary plant and equipment, fencing and site security, realignment of existing roadway and drainage ditch through the site, underground power cable network, temporary construction compound.	Granted	December 2019	Incineration/EFW	395,000
LCC/2019/0021	Imperial Road, Heysham	<del>The development of an energy recovery facility comprising: the erection and operation of an energy from waste building including offices, workshop and visitor/education facilities; air cooled condensers; internal access roads; car, cycle and coach parking; perimeter fencing; electricity sub-stations; weighbridges; weighbridge office; contractors office; water and diesel tanks; lighting; heat pipes; hardstandings; earthworks; landscaping and other ancillary infrastructure. (330,000T)</del>	Granted	February 2020	Incineration/EFW	Planning permission now lapsed.

Reference	Location	Proposal	Status	Date	Type	Throughput Tonnes per annum (TPA)
BwDC 10/19/0495	Suez Recycling and Recovery UK Ltd Eccleshill	<del>Demolition of existing waste transfer and materials recycling buildings and construction of an energy from waste facility (EFW) with ancillary infrastructure and landscaping. (500,000T)</del>	Granted	August 2019	Incineration/ EFW	Planning permission now lapsed.
LCC/2019/0005	Gaskell House, 45-49, Rough Hey Road, Preston	Erection of building for a material recycling facility	Withdrawn	July 2019	General waste transfer and recycling	N/A

### 2018 Planning Permissions (1/4/2018 - 31/3/2019)

Reference	Location	Proposal	Status	Date	Type	Throughput Tonnes per annum (TPA)
LCC/2018/0050	Tower House, Stopgate Lane, Simonswood	Erection of a new wash plant facility for processing of inert waste materials to produce recycled aggregates	Granted	March 2019	Inert transfer & recycling	100,000
LCC/2018/0032	Field Between the A683 and the B6480 Hornby	Importation of waste material to restore waterlogged hollow created by collapsed drain and highway surface water runoff and restoration of site to agricultural grazing with rebuilding of drain.	Granted	October 2018	Inert to land	4,800
LCC/2018/0019	Westby Landfill Site, Annas Road, Westby with Plumpton	Variation of condition 1 of permission 05/09/0152 to allow the period of landfill/recycling/waste transfer operations to continue to 1 June 2028	Granted	November 2018	Landfill	Time extension for completion
LCC/2017/0095	Land at Little Quarry, Hill Top Lane, Whittle-Le-Woods	Importation of soils to meet stability requirements for approved residential development and cutting back of rock outcrop to provide a stable landform	Granted	May 2018	Landfill	25,228
LCC/2017/0087	Land Off Chatburn Old Road	Retrospective application for the importation of material for use in ground stabilisation and landscaping works associated with the consented residential development.	Refused	September 2018	Inert to land	N/A

## 2017 Planning Permissions (1/4/2017 - 31/3/2018)

Reference	Location	Proposal	Status	Date	Type	Throughput Tonnes per annum (TPA)
LCC/2017/0007	Tower House, Stopgate Lane, Simonswood	Extension to existing portal framed shed to house 4 no biomass boilers with associated fuel silos and drying floor.	Granted	April 2017	Incineration/EFW	5,500
LCC/2017/0008	Unit 3 Simonswood Industrial Estate Knowsley	Variation of condition 4 of permission 08/11/1283 to also permit the storage and blending of soils, sand/minerals and organic compost.	Granted	April 2017	Windrow composting	125,000
LCC/2016/0091	Blackpool Skip Hire, Beacon Road, Poulton-Le-Fylde	Erection of building and installation of biomass boiler together with the erection of an 11m external exhaust stack.	Granted	April 2017	Incineration/EFW	2,000
LCC/2016/0059	Sandons Farm, Sandy Lane, Adlington	Extension to the area of phased extraction of sand, gravel and clay, followed by infilling with inert waste for restoration purposes, back to agriculture, woodland, and nature conservation including a 5m high screen bund.	Granted	April 2017	Inert transfer & recycling	75,000
LCC/2017/0003	Simonswood Moss, Knowsley Industrial Park	Change of use from composting storage to green waste composting within existing operational area.	Granted	May 2017	Windrow composting	35,000
LCC/2017/0003	Simonswood Moss, Knowsley Industrial Park	Change of use from composting storage to green waste composting within existing operational area.	Granted	May 2017	Windrow composting	150,000
LCC/2017/0014	Salt Ayre Recycling Site, Lancaster	Variation of conditions 1 to allow continued use of the material recycling facility until 31 December 2022 with restoration no later than 31 December 2023 and condition 8 to allow for a scheme and programme for the restoration of the site to be submitted within 3 months of the cessation of use of the material recycling facility of permission LCC/2014/0006.	Granted	May 2017	General waste transfer & recycling	Time extension for completion

Reference	Location	Proposal	Status	Date	Type	Throughput Tonnes per annum (TPA)
LCC/2017/0013	Salt Ayre, Salt Ayre Lane, Lancaster	Variation of conditions 1 to allow continued use of the material recycling facility until 31 December 2022 with restoration no later than 31 December 2023 and condition 8 to allow for a scheme and programme for the restoration of the site to be submitted within 3 months of the cessation of use of the material recycling facility of permission LCC/2014/0005.	Granted	May 2017	General waste transfer & recycling	Time extension for completion
LCC/2017/0037	Unit 10 Fairfield House, Fairfield Street, Accrington	Change of use to vehicle dismantle, vehicle depollution and authorised treatment facility.	Granted	May 2017	ELVs	150
LCC/2017/0050	D13 And D14 Redscar Industrial Estate, Preston	Extension to existing transfer station and relocation of the weighbridge.	Granted	May 2017	General waste transfer & recycling	120,000
LCC/2017/0031	Unit 1a, Summit Works, Burnley	Change of Use from B2 industrial unit to a recycling facility, together with a new roller shutter door from the front access road/car park.	Granted	June 2017	General waste transfer & recycling	1,000
LCC/2017/0073	D16 Red Scar Industrial Estate, Preston	Change of Use of unit from a depot for waste collection vehicles and an associated office to a waste transfer station for the transfer of commercial and industrial waste oils and solvents and cleaning products, and the erection of an associated portal framed, steel clad building.	Granted	October 2017	Inert transfer & recycling	45
LCC/2017/0076	Unit 3 Affordable Skip Hire, Padiham	Erection of a building and use of the site as a car breakers yard	Withdrawn	2017	ELVs	N/A
LCC/2017/0041	Hillam Lane Farm, Cockerham	Construction of a reception building, acidification tanks and extension of the yard area to service the existing anaerobic digester	Withdrawn	June 2017	Anaerobic digestion	N/A
LCC/2016/0038	Land at Little Quarry, Whittle-Le-Woods	Importation of soils to meet stability requirements for approved residential development and cutting back of rock outcrop to provide a stable landform	Withdrawn	December 2017	Inert to land	N/A



## 2016 Planning Permissions (1/4/2016 - 31/3/2017)

Reference	Location	Proposal	Status	Date	Type	Throughput Tonnes per annum (TPA)
LCC/2016/0094	Blackburn Waste Water Treatment Works, Samlesbury	Biomethane process plant to purify the biogas resulting from the sludge treatment process including the erection of kiosks and stacks.	Granted	March 2017	Anaerobic digestion	24
LCC/2016/0084	Foggs Farm, Hobbs Lane, Cloughton On Brock	Change of use of existing buildings and land to use for the production of agricultural bedding materials from imported waste paper products including installation of drying equipment and biomass boiler, installation of flue and weighbridge, erection of new storage building, formation of hard standing, access alterations and siting of two portacabin buildings for offices / rest rooms and toilet / shower block.	Granted	March 2017	General waste transfer & recycling	12,500
LCC/2016/0079	D6B, Red Scar Industrial Estate	Change of use to recycling facility including crushing and screening of aggregate waste materials, construction of storage bays and container units for use as site office and lock up facilities.	Granted	January 2017	Inert transfer & recycling	78,000
LCC/2016/0076	Primet Works, Greenfield Road, Colne	Change of use from engineering to vehicle storage, vehicle dismantle, vehicle depollution and authorised treatment facility.	Granted	November 2016	ELVs	150
LCC/2016/0071	Wyreside Farm, St Michaels on Wyre	Construction of a micro anaerobic digestion plant comprising of digester vessel and combined head and power unit fed by farm waste (dairy slurry)	Granted	October 2016	Anaerobic digestion	None stated
LCC/2016/0052	Halton East Waste Water Treatment Works, Halton	Change of use of land to wastewater treatment and erection of a control kiosk.	Granted	September 2016	Water treatment	None stated
CRT/2016/0042	Recycling Lives, Longridge Road, Preston	Application for lawful development certificate for an existing use of a pre-shredder to continue metal and waste recycling.	Granted	October 2016	ELVs	No change to capacity
LCC/2015/0100	Land off Mythop Road, Weeton	Construction of earth bunded lagoon to store digestate from anaerobic digester plant at Stanley Villa Farm.	Withdrawn	May 2016	Anaerobic digestion	N/A

## 2015 Planning Permissions (1/4/2015 - 31/3/2016)

Reference	Location	Proposal	Status	Date	Type	Throughput Tonnes per annum (TPA)
LCC/2015/0103	Whitemoss Horticultural, Knowsley	Variation of condition 6 of pp. ref 8/11/0528 to allow the importation of green wastes and aggregates between the hours of 06.00 to 18.30 Mondays to Fridays, 07.30 to 17.30 hours on Saturdays and 10.00 to 16.00 on Sundays and public holidays.	Granted	December 2015	General waste transfer & recycling	Time extension for completion
LCC/2015/0084	Primet Foundry, Greenfield Road, Colne	Change of use of part of the site from foundry to end of life vehicle storage, dismantling, depollution and authorised treatment facility (sr2011 no3) also vehicle maintenance, repairs, office and amenity facilities.	Granted	October 2015	ELVs	151
LCC/2015/0076	Steel Point Staveley Road, Skelmersdale	Change of use of land from steel stockholders and associated storage to steel stockholders and associated storage including metal recycling.	Granted	October 2015	Metal recycling	3,000
LCC/2015/0113	Redscar Industrial Estate, Longridge Road, Preston	Application for non-compliance with conditions 5 and 9 of permission 06/96/0183 to remove the restriction on waste types to be processed and stored outside the building and to regularise the removal of a landscaped bund.	Withdrawn	February 2016	General waste transfer & recycling	N/A
LCC/2015/0088	Appley Biomass to Energy Ltd Depot, Appley Bridge	Low temperature pyrolysis plant to convert low worth waste plastic into diesel and gasoline and to comprise a fuel reception hall, conveyors, chemical treatment, fractionation columns, fuel storage tanks a generator set and offices.	Withdrawn	January 2016	EFW/Incineration	N/A
LCC/2015/0026	Unit 1, Station Yard Factory, Station Road, Rufford	Retrospective change of use of land and existing building from light industrial (Class B1) to a mixed use for light industrial (Class B1) and storage and distribution (class b8) uses and the recycling of non-hazardous waste plastics, and erection of a warehouse building for storage and distribution of materials associated with the uses.	Granted	October 2015	General waste transfer & recycling	10,000
LCC/2015/0021	Unit 9 St Lawrence Mill, Great Harwood	Change of use to end of life vehicle authorised treatment centre and car repairs.	Granted	May 2015	ELVs	3
LCC/2015/0014	Sandons Farm, Sandy Lane, Adlington	Extension to the area of phased extraction of sand and gravel and infilling with inert waste for restoration purposes, back to agriculture and conservation.	Granted	May 2015	Landfill	68,000
LCC/2015/0009	Land West of Tomlinson Road, Leyland	Change of use to inert waste transfer and storage, construction of concrete track and loop for vehicles and plant manoeuvring, site office cabin, welfare cabin and weighbridge.	Granted	April 2015	Inert waste transfer and recycling	75,000

Reference	Location	Proposal	Status	Date	Type	Throughput Tonnes per annum (TPA)
LCC/2014/0162	Clifton Marsh Landfill Site, Newton with Clifton	Variation of conditions 1 and 2b of permissions 05/09/0376 and 06/09/0395 to allow landfilling and land raising to be extended until 31 December 2035 and restored within 12 months of cessation of landfilling and land raising and to amend the final restored landform.	Granted	May 2015	Landfill	Time extension for completion
LCC/2015/0081	Land at Little Quarry, Whittle-Le-Woods	Importation of soils to meet stability requirements for approved residential development.	Withdrawn	March 2016	Inert to land	N/A
LCC/2015/0039	Lynwood, Blackpool Road, Newton.	Variation of condition 16 of permission 05/10/0641 to allow the fishing lake to be used for commercial purposes for a maximum of 12 persons at any one time.	Withdrawn	August 2015	-	N/A
LCC/2015/0077	Former NIPA Laboratories Site, Oswaldtwistle	Change of use of land to storage and distribution of raw and recycled UPVC material, siting of static caravan for site security, and 2.4m high security fencing.	Refused	October 2015	General waste transfer and recycling	N/A
LCC/2015/0092	Unit 26, Heysham Business Park, Middleton	Retrospective application for the change of use from go-kart track to waste transfer station. Retention of two demountable units, a bale shed and plant and equipment and erection of a storage and sorting building.	Refused	March 2016	General waste transfer and recycling	N/A
LCC/2015/0067	Jubilee Wood, Rainford Road, Bickerstaffe	Change of use of land to storage and blending of soils, sand/minerals and green and organic compost together with erection of a building, car park to provide 10 spaces and improvement to vehicular access.	Refused	January 2016	Composting facility	N/A
LCC/2014/0166	Iron House Farm, Out Rawcliffe	Variation of condition 2 of pp.02/08/1116 to allow the importation of post IVC compost from commercial waste management facilities	Refused	February 2016	Composting facility	N/A

## 2014 Planning Permissions (01/04/2014 – 31/3/2015)

Reference	Location	Proposal	Status	Date	Type	Throughput Tonnes/ annum (TPA)
11/13/0264	Whinney Hill Quarry and Landfill Site	The extension of Whinney Hill Quarry (phases 2 to 4) and the restoration by means of partial infill with inert construction, demolition and excavation waste and ancillary activities.	Granted	February 2015	Landfill	3,300,000
LCC/2014/0153	Former Garstang Household Waste Recycling Centre	Continued use of recycling centre including an additional 6 containers for use as staff welfare, storage, repair and resale of items and including the stationing of up to 5 HGVS.	Granted	December 2014	General waste transfer & recycling	1,000
LCC/2014/0120	Clifton Marsh Landfill Site, Lytham Road, Clifton	Non-compliance with conditions 5 and 8 of pp 05/13/0696 to extend the hours of working for composting and wood shredding operations and to increase the stockpile height of waste materials from 5m to 10m.	Granted	November 2014	Windrow composting	20,000
LCC/2014/0100	Bezza House, Samlesbury	Importation and laying of subsoil and excavated material and topsoiling to fill in hollow and form lawned garden.	Granted	November 2014	Inert to land	990
LCC/2014/0082	Land off Sydney Street, Accrington	Change of use from sui generis car dealership to sui generis vehicle parts sales and end of life vehicle centre.	Granted	November 2014	ELVs	75,000
LCC/2014/0059	Viridor Polymer and Recycling Facility	Erection of three polytunnels to store bailed plastics stored externally on the site.	Granted	June 2014	General waste transfer & recycling	20,000
LCC/2014/0055	Tong Farm, Tong Lane, Bacup	Extension to quarry and restoration by means of infill with inert construction, demolition and excavation waste, the sorting, screening and export of recyclable material, the consolidation of existing permissions and revision of approved working and restoration.	Granted	October 2014	Landfill	60,000
LCC/2014/0043	Back Lane Quarry, Nether Kellet	Change of use from quarry to area for recycling of road planings and road base.	Granted	June 2014	Inert waste transfer & recycling	75,000
LCC/2014/0003	Tim Butler Plant Hire Ltd, Middleton Road, Middleton	Application for a lawful development certificate for the use of the site for the import, crushing, storage, recycling and distribution of inert materials including on site sales to the building trade, retention of crushing and screening machinery.	Granted	June 2014	Inert waste transfer & recycling	70,000
11/13/0050	Formerly UK Safe Storage	Change Of Use to vehicle depollution/recycling operation including erection of industrial building and provision of one office cabin and 3 storage containers.	Granted	April 2013	ELVs	200

Reference	Location	Proposal	Status	Date	Type	Throughput Tonnes/ annum (TPA)
05/13/0777	Gorst Farm, Lodge Lane, Elswick	Retrospective for retention of imported inert materials, partial infilling of pond, formation of a lake, formation of an access landscaping and extraction of sand.	Granted	January 2014	Inert to land	38,800
05/13/0696	Clifton Marsh Landfill Site	Change of use of concrete pad to a combined use for open air windrow composting, wood shredding and road sweeping recycling.	Granted	February 2014	Windrow composting	20,000
01/13/1092	Hillam Lane Farm, Cockerham	Proposed additional ancillary buildings and plant and equipment as part of an approved anaerobic digestion plant.	Granted	January 2014	Anaerobic digestion	40,555
LCC/2014/0164	Carr Farm, Brying with Warton	The construction of a lagoon and associated work to the existing AD plant	Withdrawn	February 2015	Anaerobic digestion	N/A
LCC/2014/0158	Riverside Waste Transfer and Recycling Centre, Jameson Road, Fleetwood	Non-compliance with condition 12 of planning permission 02/11/0672 to allow development to commence without first approving details for the disposal of foul drainage from the office and staff welfare buildings and for the drainage of water from the site	Withdrawn	January 2015	General waste transfer and recycling	N/A
LCC/2014/0157	Riverside Waste Transfer Station and Recycling Centre	Non-compliance with condition 23 of planning permission 02/11/0671 to allow development to commence without first approving the details for the provision of surface water drainage works from the site	Withdrawn	January 2015	General waste transfer and recycling	N/A
LCC/2014/0064	Tomlinson Industrial Estate, Leyland	Change of use to inert waste transfer and storage, construction of a concrete track and loop for vehicles and plant manoeuvring, site office cabin, welfare cabin and weighbridge	Withdrawn	August 2014	Inert waste transfer & recycling	N/A
LCC/2014/0160	Ream Hills Farm Weeton	Erection of a bund	Refused	January 2015	Inert to land	N/A
LCC/2014/0105	Ream Hills Farm Weeton	Construction of a bund with soils and inert waste	Refused	October 2014	Inert to land	N/A

## 2013 Planning Permissions 1/4/2012 – 31/3/2013

Reference	Location	Proposal	Status	Date	Type	Throughput Tonnes per annum (TPA)
12/13/0509	Green Lane Mill, Burnley	Retrospective application for change of use from B2 industrial to a vehicle recycling centre.	Granted	February 2014	ELVs	625
14/13/0374	Fletcher Bank Quarry, Ramsbottom	Construction and operation of an anaerobic digestion plant including a main reception building, biogas holder, associated storage tanks, 2 CHP engines, standby flare, service yard, weighbridge and offices and water management lagoon.	Granted	November 2013	Anaerobic digestion	45,000
09/12/0868	Clayton Hall Landfill Site Dawson Lane Whittle Le Woods	Extension to waste sorting and recycling centre building to connect with the existing waste transfer station. Increase in the roof height of the existing building to create continuity additional external water tanks electrical cabinets and the creation of additional car parking spaces	Granted	October 2013	General waste transfer & recycling	150,000
14/13/0178	Unit 4 Hudhey Industrial Estate, Haslingden	Change of Use from warehouse to waste tyre recycling centre.	Granted	June 2013	General waste transfer & recycling	6,000
13/13/0109	Riverside Mill, Nelson	Proposed recovery and exportation of construction materials from inert waste.	Granted	June 2013	Inert to land	75,000
11/13/0147	Parkinson Sheet Metal, Accrington	Change of Use from B2 to sui generis use for a vehicle depollution recycling operation.	Granted	May 2013	ELVs	60
06/13/0173	Rowan Scrap Metals Ltd, Rough Hey Industrial Estate, Ribblesdale	Change of Use of part of the site from scrap metal and vehicle decommissioning to inert and excavation waste transfer activity with treatment including retrospective permission for retention of concrete immovable sound barrier.	Granted	June 2013	Inert waste transfer & recycling	75,000
05/13/0431	Unit 2, Scafell Road, Queensway Industrial Estate, St Annes	Change of Use from general industrial unit (B2) to metal recycling processing unit centre.	Granted	November 2013	Metal recycling	3,000
03/13/0452	Willcross Farm, Skipton Old Road, Gisburn	Demolition of farm buildings and construction of an anaerobic digester plant for the production of electricity from crops and livestock manures including one digester tank, a silage storage area, digestate lagoon and flare stack.	Granted	July 2013	Anaerobic digestion	11,000
12/13/0477	27 Stockbridge Road, Padiham	Change of use to a plastic waste recycling facility.	Withdrawn	January 2014	General waste transfer & recycling	N/A

Reference	Location	Proposal	Status	Date	Type	Throughput Tonnes per annum (TPA)
05/13/0777	Gorst Farm, Lodge Lane, Elswick	Retrospective application for the retention of imported inert materials, partial infilling of pond, creation of a lake, formation of a new access and landscaping and extraction of sand	Withdrawn	January 2014	Inert to land	N/A
05/13/0575	Lynwood, Blackpool Road, Newton	Application for operation of fishing lake without complying with condition 16 of planning permission 05/10/0641 by allowing lake to be open for public use	Withdrawn	November 2013	-	N/A
01/13/0945	Unit 26 Heysham Business Park, Middleton	Retrospective application for the change of use from go-kart track to waste transfer station including the erection of a bale shed and new sorting shed	Refused	November 2013	General waste transfer and recycling	N/A
01/12/1027	Nans Nook Farm, Ellel	Change of use of land for processing of inert waste to produce a secondary aggregate including erection of new building and continuation of existing use as agricultural and civil engineering store and depot	Refused	April 2013	Inert waste transfer and recycling	N/A

## 2012 Planning Permissions 1/4/2012 – 31/3/2013

Reference	Location	Proposal	Status	Date	Type	Throughput Tonnes per annum (TPA)
12/12/0083	125 Park Road Padiham Burnley	Change of Use of premises to a waste transfer station including partial demolition of the building to form a new access and erection of an open fronted sorting shed	Granted	June 2012	General waste transfer & recycling	75,000
12/13/0025	Unit 4 Britannia Mill Ruskin Street Burnley	Change of Use from general industrial to waste transfer station.	Granted	March 2013	General waste transfer & recycling	5,200
12/12/0021	Unit 3 Grove Mill Grove Lane Padiham	Retrospective application for use of industrial unit for an indoor depollution recycling and reconditioning of vehicles and parts	Granted	April 2012	ELVs	75,000
08/11/1283	Unit 3/4 Simonswood Industrial Estate Off Stopgate Lane Simonswood	Change of Use from authorised treatment facility for End of Life Vehicles to processing and recycling of waste wood and virgin wood including shredding screening and storage of raw and processed materials and the siting of a 15m long weighbridge demountable offices and car parking facilities.	Granted	April 2012	Windrow composting	70,000
06/12/0705	Unit D6 Longridge Road Ribbleson	Change of Use from storage yard to silt waste dewatering facility the siting of two demountable units a toilet block one secure container eight tipping bays water separator one storage tank lighting and four car parking spaces.	Granted	November 2012	General waste transfer & recycling	5,000
05/12/0246	Clifton Marsh Landfill Site, Lytham Road, Clifton	Change of Use to a mixed use for a wood shredding operation and for an open-air window composting operation.	Granted	July 2012	Windrow composting	130,000
01/12/0948	Back Land Site, Heysham Business Park	Retrospective application for the change of use to soil and aggregate recycling facility.	Granted	December 2012	Inert waste transfer & recycling	75,000
01/12/0778	Ken Allen Autowreckers, White Lund Industrial Estate	Change of Use of Gills Auto Engineers from auto repair to scrap metal recycling facility and retrospective application for change of use of land to scrap car storage area.	Granted	October 2012	ELVs	80
01/12/1181	Hodgsons Garage Morecambe	Change of use from car sales, repairs and servicing to waste recycling facility	Refused	March 2013	General waste transfer & recycling	N/A
05/12/0176	Westby Landfill Site, Westby	Variation of condition 1 of planning permission 05/09/0152 to allow the period for landfilling, recycling and waste transfer operations to continue until 1 June 2040	Refused	August 2012	General waste transfer & recycling	N/A



Reference	Location	Proposal	Status	Date	Type	Throughput Tonnes per annum (TPA)
01/12/0949	Unit 14, Heysham Business Park, Middleton	Retrospective application for change of use of land from go kart track to waste transfer station	Refused	March 2013	General waste transfer and recycling	N/A
09/12/0256	Sandons Farm Adlington	Temporary change of use for the storage of materials including areas for the sorting treating crushing and screening of construction demolition and excavated soil/waste for use in the restoration of the quarry with surplus material being sold back to the market	Withdrawn	May 2012	Inert waste transfer and recycling	N/A
07/11/0632	Railway Sidings, Off Brownedge Road, Bamber Bridge	Application for a Lawful Development Certificate for a proposed railhead for unloading and onward distribution of aggregate including construction of 4 storage bays, weighbridge and office.	Withdrawn	February 2013	-	N/A
09/12/0934	Rigby Landfill Site Chorley Road Standish	Variation of condition 2 of permission 09/07/0262 to allow the retention of the surface water management areas all associated areas and the restoration of the site by 31 March 2014	Withdrawn	November 2012	-	N/A
09/12/0429	Duxbury Park Golf Course Duxbury Hall Road Chorley	Remodelling works to improve the quality and condition of the course consisting of reshaping works using imported inert soils and landscaping to enhance playability and drainage	Withdrawn	July 2012	Inert to land	N/A
06/12/0399	Roman Way Fulwood Preston	Change of use from car park to treatment plant including earth mound two demountable units and storage facilities	Withdrawn	June 2012	-	N/A

## 2011 Planning Permissions 1/4/2011 - 31/3/2012

Reference	Location	Proposal	Status	Date	Type	Throughput Tonnes per annum (TPA)
12/10/0668	Unit 2 Balderstone Lane Heasandford Industrial Estate, Burnley	Retention of part of unit 2 as a waste transfer station.	Granted	February 2011	General waste transfer & recycling	7,800
08/11/0527	Unit 2 Simonswood Industrial Estate Simonswood	Retrospective application for change of use to an inert recycling centre including processing area and access/haul roads.	Granted	November 2011	Inert waste transfer & recycling	500,000
06/11/0842	Guild Park, Cumeragh Lane, Whittingham	Retrospective application for the change of use of land and buildings for the purpose of importing sorting segregating bulking up and removal of Lancashire care NHS foundation trust waste.	Granted	December 2011	General waste transfer & recycling	108
06/11/0559	Croft Street Ashton Preston	Change of Use from distribution warehouse to waste metal recycling.	Granted	September 2011	Metal recycling	1,200
02/11/0184	Unit 8, Burn Hall Industrial Estate, Venture Road Thornton-Cleveleys	Change of Use from general industrial to waste transfer station for commercial waste including demolition and modification of existing buildings, erection of waste transfer building, materials recovery facility plant, and perimeter fencing.	Granted	October 2011	General waste transfer & recycling	75,000
11/11/0332	Albert Mill Everest Works, Accrington	Change of use from B2 general industrial to sui generis vehicle recycling operations	Refused	October 2010	ELVs	N/A
07/11/0426	Railway Sidings, Off Browndge Road, Bamber Bridge	Application for a lawful development certificate for a proposed railhead for the unloading and onward distribution of aggregate including the construction of 4 storage bays, weighbridge and office building.	Withdrawn	September 2011	-	N/A
12/10/0683	Hapton Valley Colliery Accrington Road Hapton Burnley	Application to allow for waste transfer operations to continue with an increased number of HGV movements on the site as a whole	Withdrawn	February 2011	General waste transfer and recycling	N/A
01/11/1118	Nans Nook Farm, Bay Horse, Lancaster	Retrospective application for the change of use of existing plant and machinery storage yard to recycling unit for demolition and excavation materials and mobile crushing/screening equipment	Withdrawn	February 2012	General waste transfer and recycling	N/A

**2010 Planning Permissions 1/4/2010 - 31/3/2011)**

Reference	Location	Proposal	Status	Date	Type	Throughput Tonnes per annum (TPA)
14/10/0452	Waterbarn Mill Stacksteads	Change Of Use from industrial thermoplastic recycling plant to waste transfer station.	Granted	November 2010	General waste transfer & recycling	10,000
14/10/0325	Tong Farm Tong Lane Bacup	Retrospective application for mineral working and the importation of soil/subsoil for the purposes of restoration.	Granted	June 2010	Landfill	102,200
11/10/0299	Brookside Mill Oswaldtwistle	Change of Use from B2 general industrial to vehicle depollution/recycling operation sui generis	Granted	June 2010	ELVs	500
08/10/0319	PD Logistics Pingwood Lane, Kirkby	Retrospective application for change of use of existing timber storage use to allow storage of domestic recyclable material.	Granted	June 2010	General waste transfer & recycling	25,000
07/10/0146	Lancashire Enterprise Business Park	Change of Use from general industrial to waste transfer station.	Granted	June 2010	General waste transfer & recycling	75,000
06/10/0169	Unit 31 Former Interbrew Unit Longridge Road Preston	Change of Use of land and buildings from storage and distribution centre B8 to a waste recycling centre sui generis predominantly for the recycling and storage of ferrous and non-ferrous metals waste electronic and electrical equipment and end of life vehicles. (400,000T Metals, 25,000T WEEE)	Granted	June 2010	ELVs	425,000 – No change - relocation and consolidation of two facilities
02/10/0205	Poulton Business Park Poulton Le Fylde	Retrospective application for change of use of land and building from waste transfer station to an end of life Vehicle processing and recycling centre.	Granted	June 2010	ELVs	2,500
05/10/0270	Land Off West Moss Lane, Higher Ballam	Construction of an irrigation reservoir by extraction and export of clay	Refused	October 2010	-	N/A
05/10/0200	Tarnbrick Farm Kirkham	Variation of condition 3 4 and 6 of permission 05/08/0620 to allow the importation and shredding of waste wood in addition to the permitted green waste types	Refused	June 2010	Composting facility	N/A
02/10/0724	Land to The South of Crook Gate Lane, Out Rawcliffe	Extraction of clay to form a fishing lake including creation of an access road car park office and associated landscaping	Refused	March 2011	-	N/A
12/10/0248	Unit 2 Balderstone Lane Heasandford Industrial Estate	Change of use from brick crushing to waste recycling centre	Withdrawn	August 2010	General waste transfer and recycling	N/A
07/10/0064	Higher Seed Lee Barn, Bamber Bridge	Creation of an acoustic bund with new temporary access road	Withdrawn	April 2010	Inert to land	N/A

## 2009 Planning Permissions (1/4/2009 - 31/3/2010)

Reference	Location	Proposal	Status	Date	Type	Throughput Tonnes per annum (TPA)
02/08/1116	Iron House Farm Out Rawcliffe	Retrospective application for change of use of land to form composting site.	Granted	March 2010	Windrow composting	10,000
01/07/1233	Ellel Crag Quarry Lancaster	Retrospective Change of Use to inert recycling facility erection of new building and parking in association with transfer station.	Granted	December 2009	Inert transfer & recycling	18,200
05/09/0071	Westby Landfill Site Annas Road Westby	Extension to existing transfer station building to allow the dry storage of baled paper card and plastic materials.	Granted	May 2009	Plastic recycling	120
01/09/0278	Overton Playing Fields	Raising levels of the playing field by importation of inert waste	Granted	July 2009	Inert to land	10,000
01/09/0316	Morecambe Metals Northgate White Lund Estate	Change Of Use of existing garage for the storage and treatment of end of life vehicles.	Granted	July 2009	ELVs	2,500
03/09/0369	Hickeys Garage, Pendle Trading Estate, Clitheroe	Change Of Use from light engineering plant depot to waste transfer station.	Granted	July 2009	General waste transfer & recycling	75,000
01/09/0521	39a Lune Industrial Estate Lancaster	Storage, de-pollution and dismantling of end of life vehicles.	Granted	July 2009	ELVs	400
11/09/0215	Unit 6 & 7 Holme Road Clayton Le Moors	Change Of Use from haulage yard and garage area to form extension to existing waste transfer station and change of use of existing storage area to allow the storage of processed waste.	Granted	August 2009	General waste transfer & recycling	25,000
11/09/0226	Unit D6-11 Junction 7 Business Park Blackburn Road Clayton Le Moors	Change of Use from B2 (storage and manufacturing) to sui generis (waste treatment recycling facility) for the recycling of end of life tyres and wire from tyres and the transfer of waste plastic and the provision of two external storage silos and a cyclone.	Granted	July 2009	General waste transfer & recycling	79,500
01/09/0639	Leapers Wood Quarry Kellet Road Carnforth	Inert aggregate recycling facility.	Granted	November 2009	Inert transfer & recycling	55,000
03/09/0633	Miles Fox (Haulage) Ltd	Change Of Use of building and part of depot to a waste transfer station.	Granted	September 2009	General waste transfer & recycling	100,000
06/09/0550	B5 Red Scar Industrial Estate	Change Of Use to recycling facility including crushing and screening of aggregate waste material.	Granted	November 2009	Inert transfer & recycling	75,000

Reference	Location	Proposal	Status	Date	Type	Throughput Tonnes per annum (TPA)
07/09/0318	Dungeon Farm Skip Lane Hutton Preston	Proposed green waste composting facility in redundant cattle buildings and silage clamps	Granted subject to S106			
02/09/0549	Land Adjacent to The Wyre Way, Preesall	Proposed retention of two mineral exploration pads, associated capped well structures and access tracks	Refused	January 2010		
01/09/0553	Nightingale Hall Farm Lancaster	Temporary permission for timber recycling for biomass energy	Refused	January 2010		
05/09/0351	Pittfield Farm Singleton	Change of use from agriculture to composting facility	Refused	August 2009		
07/09/0319	Higher Seed Lee Barm Brindle Road Bamber Bridge Preston	Creation of an acoustic bund	Withdrawn	September 2009		
05/09/0201	Land Off West Moss Lane Higher Ballam	Construction of an irrigation reservoir by extraction and export of clay	Withdrawn	December 2009		
02/09/0787	C15 West Road Hillhouse International Business Park	Anaerobic digestion facility processing commercial organic waste streams to provide renewable energy through CHP power plant	Withdrawn	December 2009		

## Appendix 2: Minerals Planning Applications

Reference	Location	Proposal	Status	Date	Type	Capacity (Tonnes)
LCC/2023/0041	Lower Brockholes Quarry Brockholes Brow Preston	Variation of conditions 2, 3, 6, 17 and 18 attached to pp. LCC/2021/0050 to amend the timescale for the site restoration with infilling completed by 30 September 2025 with final restoration achieved by not later than 30 April 2026.	Pending		Extension of time for site restoration	
LCC/2023/0030	Land off Bourbles Lane, Preesall	The extraction and processing of sand and gravel including the construction of new site access roads, landscaping and screening bunds, minerals washing plant and other associated infrastructure with restoration to leisure end-uses, agricultural land and biodiversity enhancement, using imported inert fill.	Pending		Also reported under waste owing to use of inert fills	
LCC/2023/0039	Waddington Fell Quarry, Waddington	Variation of Condition 1 of Planning Permission LCC/2022/0057 to allow mineral working to continue until 1 July 2026 and restoration to be completed by 1 July 2027	Granted	2023/24	Extension of time for site restoration	
LCC/2023/0002	Preston New Road, Little Plumpton	Variation of condition 2 of planning permission LCC/2014/0096 to allow the date of final restoration of the site to be postponed until 30th June 2025.	Granted	2023/24	Extension of time for site restoration	
LCC/2021/0059	Bradleys Sand Pit, Lightfoot Green Lane, Fulwood	Variation of condition 2 of permission LCC/2017/0019 to allow the continuation of mineral landfill and waste transfer activities until 31 December 2029 with restoration by 31 December 2031	Granted	2023/24	Extension of time for completion	
LCC/2022/0030	Land At St Annes Foreshore, Lytham St Annes	Continuation of sand winning, including the winning and working of sand from the foreshore, exportation of sand off site and the retention of associated infrastructure including site access, secure compound and stockpiling area	Withdrawn	2023/24	-	N/A
LCC/2022/0057	Waddington Fell Quarry, Slaidburn Road, Waddington	Variation of condition 2 of planning permission 03/06/0095 to allow mineral working to continue until 31 December 2023 and final restoration to be completed by 31 December 2024.	Granted	2022/23	Extension of time until 2023 to fully work the quarry.	
LCC/2022/0025	Dearplay Landfill Site, Cliviger	Variation of conditions 1, 3, 10, 27, 28 and 29 of planning permission 12/06/0959 to allow landfilling operations to continue to 31st December 2029 with final restoration by 31st December 2030.	Granted	2022/23	Extension of time for site restoration	

Reference	Location	Proposal	Status	Date	Type	Capacity (Tonnes)
LCC/2022/0012	Catlow Fold Farm, Southfield Lane, Southfield	Removal of Condition 18 (to allow crushing & screening of mineral) & variation of condition 26 (inert materials) of planning permission LCC/2015/0055 in relation to mineral working & site restoration at Catlow West Quarry	Granted	2022/23	Screening and crushing of inert wastes to support quarry restoration	
LCC/2022/0011	Catlow Fold Farm, Southfield Lane, Southfield	Removal of Condition 6 (to allow crushing & screening of mineral) & variation of condition 23 (inert materials) of planning permission LCC/2020/0073 in relation to mineral working & site restoration at Catlow East Quarry	Granted	2022/23	Screening and crushing of inert wastes to support quarry restoration	
LCC/2022/0006	Dunald Mill Quarry, Nether Kellet	Variation of condition 1 of planning permission LCC/2016/0061 to allow for continued operation of the concrete batching plant until 21 February 2034, with all buildings, plant and associated equipment being removed and the site restored by 21 February 2035	Pending			
LCC/2021/0012	Lower Hall Farm, Samesbury	Extraction of sand and gravel including construction of new access road and new junction with A59 Preston New Road, creation of plant site, weighbridge and stockpiling area, silt ponds, landscaping including screen mounding, with progressive restoration to wetland and passive flood management facility, woodland and agriculture	Pending			
LCC/2021/0007	Land North of A674 Millennium Way, Northeast M61 Junction. 8	Prior extraction of sand / gravel and subsequent restoration with inert engineering fill to facilitate a platform for employment development, or agriculture, with peripheral landscaping	Pending			
LCC/2022/0016	Ravenhead Quarry, Chequer Lane, Upholland	Variation of conditions 2, 3, 4, 5, 7, 21 and 25 of planning permission LCC/2014/0008 to allow extension of the approved mineral working area	Granted	2021/22	Quarry extension	100,000 Great Arc Sandstones and inter-bedded Siltstones, 36,000 Shales
LCC/2020/0074	Catlow Quarry Southfield	Formation of an additional access road into the quarry	Withdrawn	May 2021		

Reference	Location	Proposal	Status	Date	Type	Capacity (Tonnes)
LCC/2020/0073	Catlow East Quarry Nelson	Planning application to vary condition 1 of planning permission 13/12/0585 to extend the period of time to process stone and restore the site to 31/12/2028	Granted	2021/22	Extension of time for implementation	
LCC/2020/0071	Catlow Quarry Southfield	Variation of condition 2 of permission 13/12/0584 to allow the retention of the saw shed until 31 March 2028 with restoration of the site by 31 December 2028	Withdrawn	May 2021	-	N/A
LCC/2020/0018	Tong Quarry, Tong Lane, Bacup	Extension of quarry with restoration by means of infill with inert construction demolition and excavation waste together with ancillary activities, and the consolidation of existing planning permission.	Granted	2020/21	1,000,000T sandstone 270,000T fireclay	1,270,000
LCC/2019/0030	Ellel Crag Quarry, Bay Horse Road, Ellel	Eastern lateral extension to the existing gritstone and shale quarry followed by infilling of the excavation with imported inert waste to be completed by the 30 June 2038, together with the rebuilding and extension of the derelict farmhouse for use as site office accommodation, with the whole of the site to be restored by 30 June 2039, or within 12 months from the cessation of landfilling, whichever is the sooner.	Granted	2021/22	Extension to cut	1,790,000
LCC/2022/0005	Dunald Mill Quarry, Long Dales Lane, Nether Kellet	Variation of condition 2 of planning permission LCC/2017/0035 to extend the operation period of the depot to 21 February 2034 in line with the extension proposed by tarmac on application LCC/2021/0058	Pending			
LCC/2015/0050	Whinney Hill Quarry, Accrington	Application for continuation of stone quarrying and restoration of the site by backfilling with inert waste without complying with conditions 2 and 5 of planning permission 11/13/0264 in order to remove the requirement to construct an inert waste bund on the south boundary of the extension	Granted subject to S106			
LCC/2019/0037	Altcar Moss Wellsite, Great Altcar	Construction of a temporary wellsite and associated access track, drill, hydraulically stimulate and test two petroleum exploration boreholes including drilling rig (maximum height 60m) and associated plant and equipment, followed by wellsite restoration.	Withdrawn	July 2020		N/A
LCC/2019/0028	Former Parbold Hill Quarry Parbold	Proposed land restoration and regrading works using inert material including new access	Granted subject to S106			N/A



Reference	Location	Proposal	Status	Date	Type	Capacity (Tonnes)
LCC/2018/0044	Claughton Manor Brickworks, Claughton	Variation of condition 1 of planning permission 1/88/955 to extend the duration of the brick manufacturing operations 31 December 2036 with restoration of the site by 31 December 2037	Granted	2019/20		
LCC/2017/0040	Tarnacre Quarry, Tarnacre Lane, St Michaels on Wyre	Variation of conditions 1 and 2 of permission 02/13/0342 to allow the duration of sand and gravel extraction to be extended to 31 March 2027 and to amend the working scheme and water management proposals	Granted	2018/19		
14/13/0515	Hutchbank Quarry, Haslingden	Application for determination of conditions for permission 14/94/0355 (as amended by 14/95/0506) for the winning and working of minerals.	Granted	2018/19		
LCC/2016/0059	Sandsons Farm, Sandy Lane, Adlington	Extension to the area of phased extraction of sand, gravel and clay, followed by infilling with inert waste for restoration purposes back to agriculture, woodland and nature conservation.	Granted	2016/17	Extension to cut	75,500m <sup>3</sup>
LCC/2016/0035	Lydiat Sand Quarry, Lydiat Lane, Farington	Variation of Condition 1 of pp. 07/11/0739 to allow development to continue until 1/6/2031, variation of condition 26 of pp. 07/11/0739 to allow site operations from 6:30am Monday-Friday in relation to extraction of sand and restoration to agricultural land by the import of waste.	Granted	2016/17	Extension of time for implementation	
LCC/2017/0064	Beaconsall Exploration Site, Off Bonny Barn Road, Hundred End, Banks	Variation of condition 1 of permission LCC/2017/0016 to allow works to plug and abandon the borehole and to restore the site in accordance with condition 17 of permission LCC/2017/0016 to be undertaken between 01 April 2018 and 31 October 2018.	Refused	October 2017		N/A
LCC/2016/0041	Iron House Farm, Out Rawcliffe	Variation of condition 3 of permission 02/08/1116 to extend hours of working to 0730 - 1800 hours Monday to Friday. 0730 - 1700 hours Saturdays and 0730 - 1700 hours Sundays and bank holidays	Withdrawn	October 2016		N/A

Reference	Location	Proposal	Status	Date	Type	Capacity (Tonnes)
LCC/2014/0097	Monitoring works in a 4km radius of the proposed Preston New Road Exploration Site, Near Little Plumpton	Application for monitoring works in a 4 km radius of the proposed Preston new road exploration site comprising: the construction, operation and restoration of two seismic monitoring arrays comprising of 80 buried seismic monitoring stations and 10 surface seismic monitoring stations. The seismic monitoring stations will comprise underground installation of seismicity sensors; enclosed equipment and fenced enclosures. The surface array will also comprise monitoring cabinets. The application is also for the drilling of three boreholes, each installed with 2 monitoring wells, to monitor groundwater and ground gas, including fencing at the perimeter of the Preston New Road exploration site.	Granted at appeal	October 2016	Energy mineral exploration	N/A
LCC/2015/0069	Clayton Hall Landfill Site, Whittle-le-Woods	Revised working scheme including amended levels and extension of the mineral extraction and landfill areas.	Granted	2016/17	Extension to cut	120,000
LCC/2015/0014	Sandons Farm, Adlington	Extension to area of phased extraction of sand and gravel and infilling with inert waste for restoration purposes, to agriculture and conservation.	Granted	2015/16	Extension to cut	68,000
LCC/2014/0170	Brinscall Quarry, Withnell	Extension for approx. 1.16 million tonnes to provide for a local need for building stone and aggregates (2015).	Granted	2015/16	Extension to cut	1,160,000
LCC/2014/0096	Agricultural Land North of Preston New Road, Off Preston New Road, Little Plumpton	Construction and operation of a site for drilling up to four exploration wells, hydraulic fracturing of the wells, testing for hydrocarbons, abandonment of the wells and restoration, including provision of an access road and access onto the highway, security fencing, lighting and other uses ancillary to the exploration activities, including the construction of a pipeline and a connection to the gas grid network and associated	Granted at appeal	October 2016	Energy mineral exploration	N/A
LCC/2014/0055	Tong Farm, Tong Lane, Bacup	Extension to quarry and restoration by means of infill with inert construction, demolition and excavation waste, the sorting, screening and export of recyclable material, consolidation of existing permissions and the revisions of approved working and restoration schemes.	Granted	2014/15	Extension to cut	

Reference	Location	Proposal	Status	Date	Type	Capacity (Tonnes)
08/12/1032	Becconsall Exploration Site, Off Bonny Barn Road, Hundred End, Banks	Variation of condition 1 of planning permission 08/10/0973 to extend the period of time for the testing for hydrocarbons in the drilled exploratory borehole and restoration of the site by a further 18 months until 28 March 2014	Withdrawn	September 2014		N/A
05/12/0003	Land South of Grange Road, Singleton	Variation of condition 2 of permission 05/10/0091 to extend the period of time for the completion and testing (fracking) in the drilled exploratory borehole and restoration of the site by 20th May 2014	Withdrawn	November 2014		N/A
LCC/2014/0101	Agricultural Land off Roseacre Road and Inskip Road, Roseacre and Wharles, Preston	Construction and operation of a site for drilling up to four exploratory wells, hydraulic fracturing of the wells, testing for hydrocarbons, abandonment of the wells and restoration, including provision of access roads and improvement of accesses onto the highway, security fencing, lighting and other uses ancillary to the exploration activities, including the construction of a pipeline and a connection to the gas grid network and associated infrastructure	Dismissed at appeal	June 2015		N/A
03/12/0940	Lanehead Quarry, Ribblesdale Works, Clitheroe	Variation of Condition 13 of planning permissions 03/96/0772 03/96/0773 03/96/0774 to allow part of Lanehead Quarry to be deepened to minus 31 metres AOD (s106 signed 2019).	Granted	2013/14		10,000,000
05/13/0021	Annas Road Exploration Site, Off Peel Road, Westby	Drilling of horizontal borehole for the purposes of hydrocarbon exploration including core sampling but excluding hydraulic fracturing.	Withdrawn	March 2013		N/A
08/13/0151	Dalton Quarry, Lees Lane, Dalton	Variation of condition 10 of permission 08/09/0494 to allow exportation of 25,000 tonnes sandstone per year for general sale.	Granted	April 2013		60,000
14/10/0324	Tong Farm, Tong Lane, Bacup	Retrospective application for mineral working and the importation of soil/subsoil for the purposes of restoration.	Granted	2010/11		755,000
1/10/0305	Whinney Hill Quarry Accrington	Extension to quarry for the winning and working of sandstone and mudstone and restoration to original levels with inert waste	Pending			

<b>Reference</b>	<b>Location</b>	<b>Proposal</b>	<b>Status</b>	<b>Date</b>	<b>Type</b>	<b>Capacity (Tonnes)</b>
08/09/0563	Stoney Brow Quarry Up Holland	Change of use from permitted agricultural end of use to golf course	Withdrawn	August 2009		N/A
06/07/1197	Bradleys Sand Pit, Fulwood	Extension of quarry to allow the extraction of sand and gravel over a period of 12 years.	Granted	2008/09		700,000

