



Lancashire

Minerals & Waste

Local Plan

Monitoring Report

April 2022

Table of Contents

Introduction	4
The Implementation of the Local Development Scheme	5
Implementation of Minerals Policies - Limestone	6
Policy – CS3 - Provision will be made for the extraction of 57.8 million tonnes of limestone in the Joint Plan Area between 2001-2021	6
Planning permissions granted during plan period	6
Policy – CS3 - Provide 10 Year Landbank.....	6
Implementation of Minerals Policies - Gritstone	7
Policy – CS3 - Provision will be made for the extraction of 38.1 million tonnes of gritstone in the Joint Plan Area between 2001-2021	7
Planning permission granted during plan period.....	7
Policy – CS3 - Provide 10 Year Landbank.....	7
Implementation of Minerals Policies - Sand and Gravel	8
Policy – CS3 - Provision will be made for the extraction of 10.8 million tonnes of sand and gravel in the Joint Plan Area between 2001-2021	8
Planning permission granted during plan period.....	8
Policy – CS3 - Provide 7 Year Landbank.....	8
Implementation of Minerals Policies - other.....	9
Policy – CS3 - Production in Excess of 25% Triggers Review of Aggregate Apportionments.....	9
Policy – CS3 - Building stone, Brick shale. Limestone for Cement manufacture	9
Policy – CS1 - Mineral Safeguarding Areas.....	9
Implementation of Waste Policies - Landfill.....	10
Policy – CS7 - Provision will be made, as necessary, for the predicted total landfill capacity requirements for non-hazardous waste.	10
Planning permission granted during plan period.....	10
Implementation of Waste Policies - Built Waste Management Facilities	11
Policy – CS8 - Provision will be made for sufficient new waste management facilities to meet predicted waste capacity requirements.....	11
Planning permission granted during plan period.....	11
Planning Policy Review	14
Local Plan.....	14
Statement of Community Involvement.....	15
Implementation of the Duty to Cooperate.....	16

Appendix 1 Waste Planning Permissions Granted.....	21
2009 Planning Permissions (1/4/2009 - 31/3/2010).....	21
2010 Planning Permissions	22
2011 Planning Permissions	23
2012 Planning Permissions	24
2013 Planning Permissions	26
2014 Planning Permissions	27
2015 Planning Permissions	29
2016 Planning Permissions	30
2017 Planning Permissions	32
2018 Planning Permissions	33
2019 Planning Permissions	34
2020 Planning Permissions	36
2021 Planning Permissions	37
Appendix 2: Minerals Planning Applications.....	38

Introduction

The production of a monitoring report is seen as the principal mechanism for assessing the performance of the Local Plan and its effects. This reflects the Government's 'plan, monitor, manage' approach to policy formulation.

Section 35 of the Planning and Compulsory Purchase Act (2004) requires every local planning authority to produce a monitoring report containing information on the implementation of the local development scheme, and the extent to which the policies set out in the local plan are being achieved.

Further detailed information on minerals and waste production and management, together with projections and scenarios, is available in the annual Local Aggregate Assessment and Local Waste Assessment.

The Implementation of the Local Development Scheme

The timetable and key milestones for preparing the Local Plan are set out in the Local Development Scheme 2014-2020 (2018). It sets out a comprehensive list of the documents to be prepared and a timetable for preparing each document. Progress during the monitoring period is reported below.

Stage in Local Plan Review	Timetable in Development Scheme 2014-18	Actual progress	Comment
Scoping consultation	November-December 2014	November 2014	Completed on schedule
Pre-submission consultation	September-December 2018	September-December 2018	Completed on schedule
Submission	April 2019	-	Likely rescheduled to 2023

As can be seen, the timetable in the Local Development Scheme is out of date. Notwithstanding the delays, there is also a need for an additional consultation stage prior to submission to allow for consultation on additional changes arising from comments submitted during the previous consultation stage. It is our intention to publish a revised Local Development Scheme identifying an updated timetable for consultations to include an additional pre-submission consultation to take place in late 2022.

Implementation of Minerals Policies - Limestone

Policy – CS3 - Provision will be made for the extraction of 57.8 million tonnes of limestone in the Joint Plan Area between 2001-2021

	Million Tonnes (mt)
Core Strategy estimate of annual demand	2.75
Core Strategy Apportionment 2001-2021	57.8
Production and sales 2001-2020	44.85
Permitted reserves at end of 2020	45.49
Therefore, additional to be released by 2021 (apportionment minus production minus reserves)	0 (32.54mt surplus)

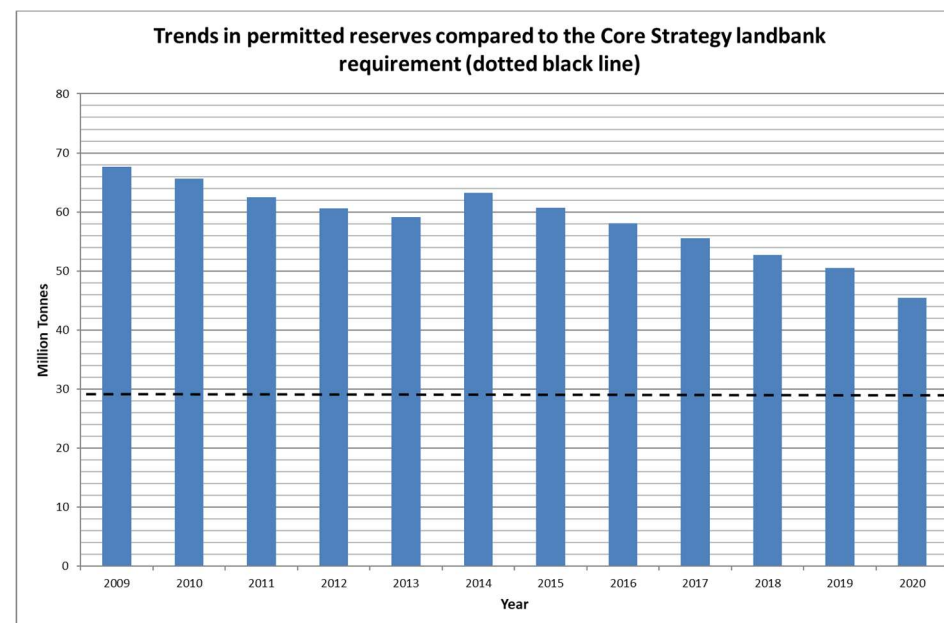
The 10 year average of production and sales (2.02mt), and the 3 year average of production and sales (2.35mt), described in the latest Local Aggregate Assessment, are key indicators in assessing the continued validity of the Core Strategy policies. Both are below the Core Strategy estimate of annual demand, indicating that the Core Strategy slightly overestimates demand.

Planning permissions granted during plan period

No planning permissions have been granted for the release of limestone for aggregate purposes during the plan period.

Policy – CS3 - Provide 10 Year Landbank

These reserves can be expressed as 'landbanks' of minerals, representing the length of time they can be expected to last at estimated rates of use. Based on the 3 year average of production and sales contained in the latest Local Aggregate Assessment this permitted reserve represents a **19 year landbank**; well above the land bank of at least 10 years described in National Policy.



Implementation of Minerals Policies - Gritstone

Policy – CS3 - Provision will be made for the extraction of 38.1 million tonnes of gritstone in the Joint Plan Area between 2001-2021

	Million Tonnes
Core Strategy estimate of annual demand	1.81
Core Strategy Apportionment 2001-2021	38.1
Production and sales 2001-2020	22.84
Permitted reserves at end of 2020	74
Therefore, additional to be released by 2021 (apportionment minus production minus reserves)	0 (58.74mt surplus)

The 10 years average of production and sales (1.01mt), and the 3 years average of production and sales (0.99mt), described in the latest Local Aggregate Assessment, are both below the Core Strategy estimate of annual demand, indicating that the Core Strategy significantly overestimates demand.

Planning permission granted during plan period

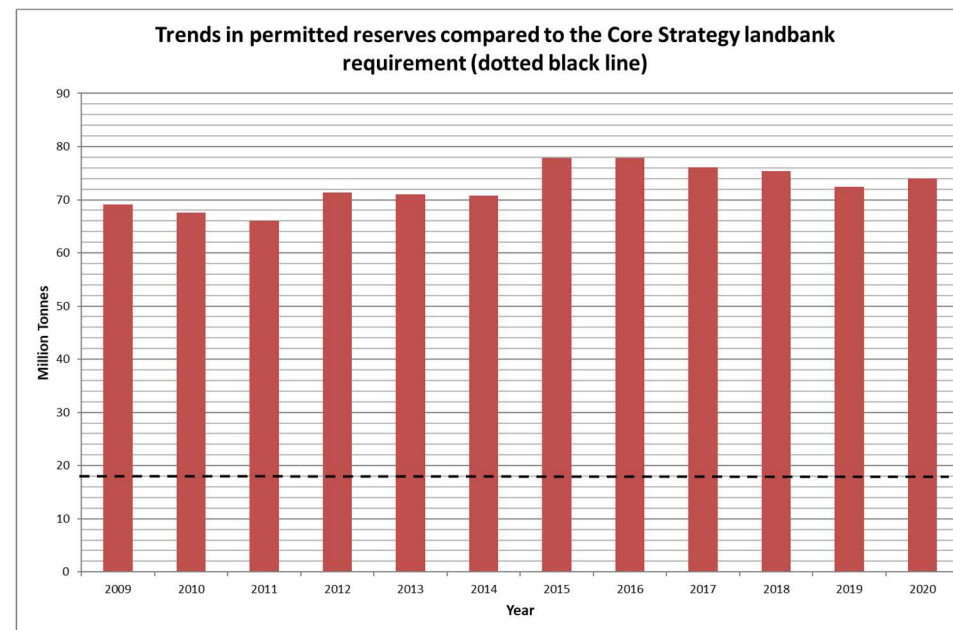
Extension at Brinscall Quarry for approx. 1.16 million tonnes to provide for a local need for building stone and aggregates (2015)
 Extensions at Whinney Hill for approx. 3.35 million tonnes to avoid sterilisation of reserves by existing permitted works (2010 and 2014)

Extension at Tong Farm for approx. 755,000 tonnes to provide for a local market need for construction materials (2011 and 2014)
 Extension at Tong Farm for approx. 1 million tonnes to provide for a local market need for construction materials (2020)

Extension at Ellel Cragg Quarry approx. 1.76 million tonnes (2021) combined with shales for use in brick manufacture.

Policy – CS3 - Provide 10 Year Landbank

These reserves can be expressed as 'landbanks' of minerals, representing the length of time they can be expected to last at estimated rates of use. Based on the 10 year average of production and sales contained in the latest Local Aggregate Assessment this permitted reserve represents an **73 year landbank**; well above the land bank of at least 10 years described in National Policy



Implementation of Minerals Policies - Sand and Gravel

Policy – CS3 - Provision will be made for the extraction of 10.8 million tonnes of sand and gravel in the Joint Plan Area between 2001-2021

	Million Tonnes
Core Strategy estimate of annual demand	0.5
Core Strategy Apportionment 2001-2021	10.8
Production and sales 2001-2020	8.2 (9.1 including marine)
Permitted reserves at end of 2020	4.8
Therefore, additional to be released by 2021 (apportionment minus production minus reserves)	0 (2.2 surplus)

The 10 years average of production and sales (0.42mt), and the 3 years average of production and sales (0.38mt), are described in the latest Local Aggregate Assessment, are both around the Core Strategy estimate of demand.

Planning permission granted during plan period

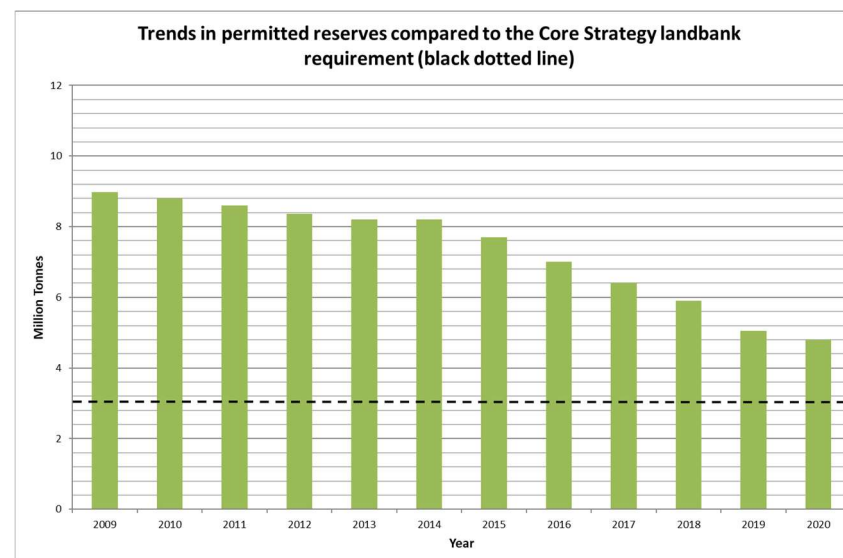
Extension at Sandons Farm for approx. 100,000 tonnes to avoid sterilisation of reserves by existing permitted works (2015) and approx. 103,000 tonnes with associated time extension to 2020 (2017). This will be followed by infilling with inert waste (75,000m³) for restoration purposes.

Extension at Bradleys Sandpit for approx. 700,000 tonnes to provide for short term need (2009).

Time extensions to Lydiate Lane to 2020, and Lower Brockholes to 2017 (both 2016), and Sharples/Tarnacre to 2027 (2018) Extension at Clayton Hall for approximately 120,000 tonnes (2015).

Policy – CS3 - Provide 7 Year Landbank

These reserves can be expressed as 'landbanks' of minerals, representing the length of time they can be expected to last at estimated rates of use. Based on the 10 year average of production and sales contained in the latest Local Aggregate Assessment this permitted reserve represents a **11 year landbank**; well above the land bank of at least 7 years described in National Policy.



Implementation of Minerals Policies - other

Policy – CS3 - Production in Excess of 25% Triggers Review of Aggregate Apportionments

No new information was available on recycled or secondary aggregate production. Existing data relating to capacity and sales of recycled aggregates are still not reliable, notwithstanding that considerable efforts have been made to address the issue.

Policy – CS3 - Building stone, Brick shale. Limestone for Cement manufacture

Existing data relating to capacity and sales is not available. National planning guidance published since the adoption of the Core Strategy only requires that landbanks for industrial minerals should be calculated when a new planning application is submitted.

Planning permission for a new release of limestone for cement manufacture through the deepening of Lanehead quarry was granted, for 10 million tonnes, in 2014 (s106 signed 2019).
Time extension at Claughton Manor Brickworks to 2036.
Extension at Tong Farm for approx. 0.27 million tonnes fire clay ancillary to the working of sandstone (2020)

Policy – CS1 - Mineral Safeguarding Areas

MSA's are reflected on the policy map of local planning authorities as they are adopted.

Implementation of Waste Policies - Landfill

Policy – CS7 - Provision will be made, as necessary, for the predicted total landfill capacity requirements for non-hazardous waste.

The Core Strategy predicts that sufficient landfill capacity is available to meet needs during the plan period.

Landfilled Type	Remaining Capacity @ end of 2020 (,000m ³)	Core Strategy Estimated Demand 2013-2021	Therefore, additional to be released by 2021
Hazardous	1,862	-	-
Non Hazardous*	10,204++	4,481	-
Inert [†]	1,757	-	-

* Some non-hazardous sites can accept some Stable Non-Reactive Hazardous Wastes (SNRHW) (principally asbestos) into a dedicated cell, but this is a small part of the overall capacity of the site.

[†] There are also numerous sites operating under exemptions, or as part of wider permits, that also accept inert waste for disposal to land.

++ Not including 6 million tonnes capacity at Whinney Hill that has permission but where the void has not been excavated yet.

Planning permission granted during plan period

Time extension to 2035 at Clifton Marsh (2015).

Extension (as a nationally significant infrastructure project) at Whitemoss Hazardous Landfill site for 150,000 tonnes per year (2015).

Time extension to 2028 at Woods Waste (2018), also changing a majority of the capacity from non-hazardous to inert.

Whinney Hill Landfill site (the Global Scheme), planning permission granted, outstanding S106 agreement for 3.3 million tonnes (2015).

Extension at Tong Farm for approx. 0.5 million m³ for inert (2020)

Extension At Ellel Quarry for approx. 0.88 million m³ for inert (2021)

Implementation of Waste Policies - Built Waste Management Facilities

Policy – CS8 - Provision will be made for sufficient new waste management facilities to meet predicted waste capacity requirements

The table below describes the new waste management capacity granted planning permission between 1 April 2009 and 31 March

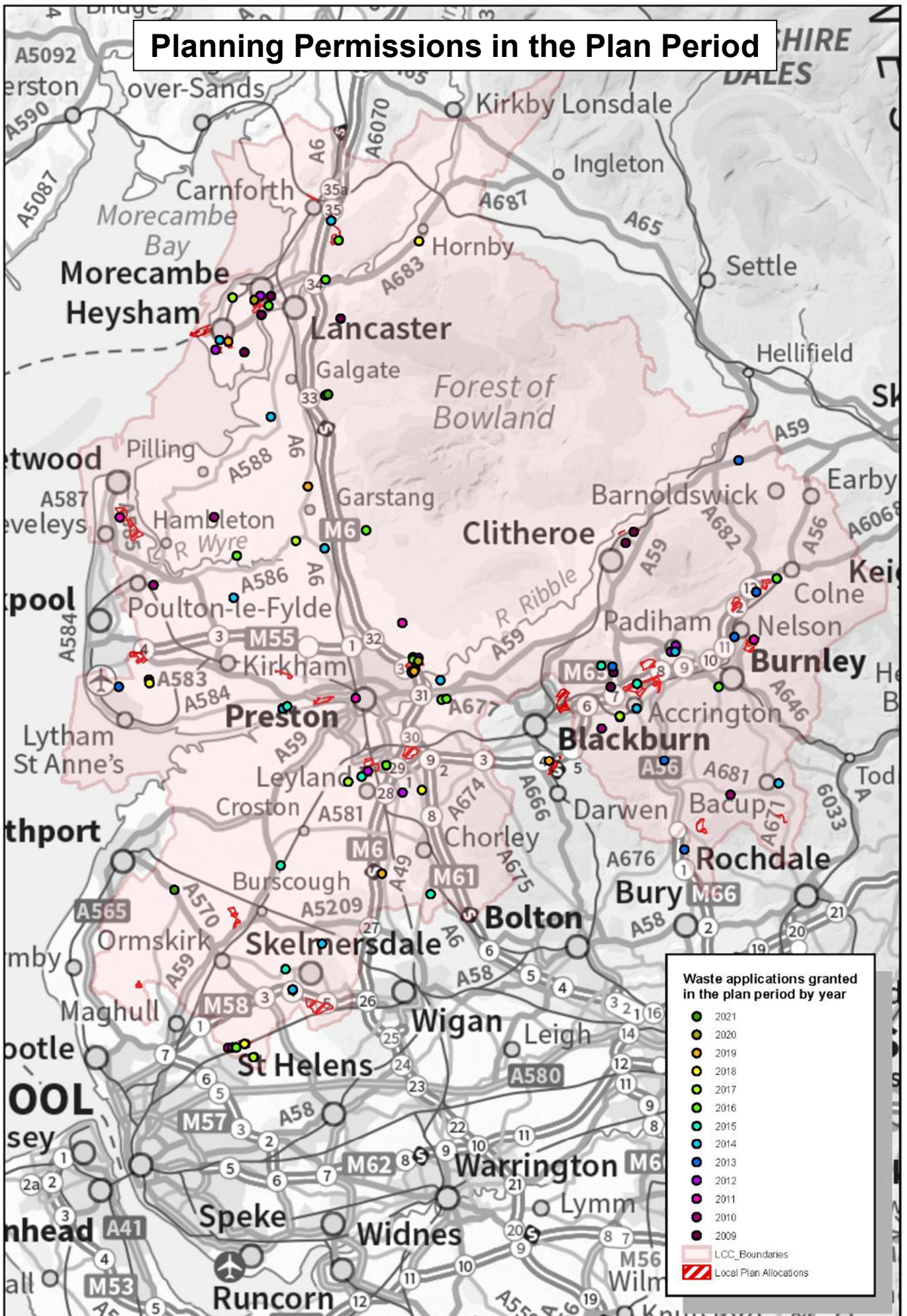
2022. The majority related to changes of use from existing industrial or agricultural uses to waste management.

Planning permission granted during plan period

Waste facility type	Tonnes per year permitted														
	2009	2010	2011	2012	2013	2014	2015	2016	2017	2018	2019	2020	2021	2022	Total
General waste transfer and recycling	283,000	100,000	75,000	221,000	5,000			19,000	147,295					15,000	865,295
End of life vehicle	5,500	3,000		215,000	200	76,000	300	150	150						300,000
Metal recycling			1,200		3,000		3,000				500				7,700
Incineration / Energy from Waste											1,225,000				1,225,000

Plastic recycling			200,000				10,000								210,000
Inert waste transfer and recycling	130,000		500,000	75,000	75,000	220,000	75,000	78,000	75,000	100,000		75,000			1,403,000
Anaerobic digestion					56,000	41,000		24	7,000						104,024
Windrow composting		10,000		130,000		150,000		345,000	35,000						670,000
Waste electrical and electronic equipment		425,000										25,000			450,000

Planning Permissions in the Plan Period



Waste applications granted in the plan period by year

- 2021
- 2020
- 2019
- 2018
- 2017
- 2016
- 2015
- 2014
- 2013
- 2012
- 2011
- 2010
- 2009

LCC Boundaries
 Local Plan Allocations

Planning Policy Review

Paragraph 10a of the Town and Country Planning (Local Planning) Regulations 2012 requires that Local Planning Authorities must complete a review of their local plan and statement of community involvement within every 5 years. The purpose of this review, as set out in the National Planning Practice Guidance (Paragraph: 064 Reference ID: 61-064-20190315), is to determine whether the policies or plan as a whole remain effective, or need to be updated. This process will

include a consideration of any changes to social/economic/environmental priorities, national policy or regulations, and local circumstances (in particular as set out in the local aggregate assessment and local waste assessment).

Local Plan

A review of the local plan is ongoing.

Priorities	National policy or regulation	Local circumstances
IPPC 6 th assessment report into climate change identifies clear link between human activities and climate change, and sets out urgent need for change	CCC 6th Carbon Budget identifies specific areas in the waste management industry that need action	Most sand quarries near end of operational life
Covid-19 economic impact and Government recovery programme.	National Planning Policy Framework revised (2018, 2021), 2022 changes anticipated.	3 significant energy from waste planning permissions granted in plan area.
Government setting into law net-zero carbon target.	National Waste Strategy Our Waste Our Resource revised	Euxton sand quarry still not operational (at 2020).
Government moratorium on fracking for shale gas	Clean Growth Strategy published	Proportion of gritstone reserve held in 1 quarry still large.
Waste import/export bans introduced by China and other international markets	Clean Air Strategy published	Work at St Annes Foreshore sand quarry suspended (at 2021)
	National Planning Policy for Waste revised	Whilst policy is still effective with reference to up to date information, the estimates of need set out in policy need updating.
	25 Year Environment Plan published	
	Growing the Bio-economy published	
	Environment Act biodiversity net gain published	

Statement of Community Involvement

Adopted in 2017. Minor changes identified in development management section, to be updated 2022.

Priorities	National policy or regulation	Local circumstances
No significant changes relevant to the contents of the SCI	No significant changes relevant to the contents of the SCI	The Covid-19 emergency measures have in large part been withdrawn, so no change is necessary to the SCI. Updates to development management section have been identified, to be consulted and updated 2022.

Implementation of the Duty to Cooperate

Mechanism	Date	Organisation	Issue	Outcome
Email	03/04/2014	North West and export/import minerals planning authorities	Circulate Local Aggregate Assessment for comment	No response
Email	20/05/2014	NWWN	Reported on the commencement of the local plan review, inviting comments	No comments
Meeting	11/07/2014	Merseyside Environmental Advisory Service	Discussed need to include minerals and waste movements within local plan review	No comments
Meeting	09/10/2014	Lancaster City Council	Mineral safeguarding areas	City Council to include MSAs in site appraisal process
Email	30/10/2014	Greater Manchester and Merseyside	Local Aggregate Assessment consultation	Respond to LAA about local projected demand based on significant levels of importation
Email	04/11/2014	Export/Import minerals planning authorities	Local Aggregate Assessment	No take up
Email	07/11/2014	Statutory and Neighbour and other affected	Local Plan Review – minerals and waste movements	No take up
Meeting	10/12/2014	Aggregate Working Party	Regional minerals planning update	No comments
Meeting	21/01/2015	Fylde Coast Planning Authorities	Shale gas update	No comments
Meeting	27/01/2015	North West Waste Network	Regional waste planning update	No comments
Meeting	29/01/2015	NuLeAF	Low level nuclear waste update	Draft Plan to continue to address LLW explicitly
Email	30/01/2015	Aggregate Working Party	Respond to AMR/LAA report	
Email	22/05/2015	GMGU	Fletcher Bank, contribution to Manchester need	Fletcher Bank continues to be in GM survey. Draft plan to include reference to Fletcher

				Bank contribution to GM needs.
Email	02/07/2015	Lancaster City Council	Coating plants and safeguarding in the City Council Local Plan	Lancaster updated on our emerging approach, and the need for them to be mindful of minerals operations when considering land allocations
Meeting		North West Development Plan Officers Group	Mineral safeguarding update	District councils to include mineral safeguarding areas on their policy maps
Phone call	29/02/2016	Burnley Borough Council and NLP	Employment land allocations and waste needs	
Meeting	14/03/2016	Aggregate Working Party	Regional minerals planning	No comments
Meeting	21/04/2016	Rossendale Borough Council	MSA and housing allocations, coating plant safeguarding, employment land and waste	LCC to share MSA guidance, RBC to include MSA in site assessments, RBC to share employment methodology
Meeting	20/10/2016	Lancaster CC	Lancaster Local Plan and conformity with minerals policies	No comments
Meeting	20/12/2016	Aggregate Working Party	Regional minerals planning	No comments
Email	15/02/2017	Aggregate Working Party and functionally linked authorities	Invitation to comment on draft Local Aggregate Assessment	Some comments received, logged, and minor changes made to the LAA
Email	27/02/2017	Lancaster CC	Coating plant safeguarding in the Local Plan	Lancaster CC updated on the emerging draft policy
Meeting	15/06/2017	Rossendale Borough Council	Mineral safeguarding areas and housing allocations	Rossendale updated on the emerging policies of the minerals and waste plan regarding coating and batching plant safeguarding, and guidance provided on addressing and documenting

				MSAs as part of the site appraisal process.
Meeting	22/06/2017	West Lancashire District Council	General. Use of district industrial land allocations in waste local plan policies	Minuted. West Lancashire are comfortable with the approach
Meeting	28/06/2017	Aggregate Working Party	General	Industry express concerns about mineral sterilisation, and development in proximity to coating and batching plant.
Email	14/08/2017	Wyre Borough Council	Query about growth rates used	None
Meeting	16/10/2017	Aggregate Working Party	General. Approval of Joint Lancashire Minerals and Waste Local Aggregate Assessment	Minuted. Approved
Email	12/04/2018	AWP and linked authorities	Comments on LAA	No changes
Meeting	08/06/2018	Rosendale BC	Minuted D2C - waste on employment sites, MSA, district doesn't need to address m or w in infrastructure plan	No changes. ok with approach both ways
Meeting	11/07/2018	Rosendale BC	Minuted - MSA Coal	No changes
Meeting	09/06/2018	AWP	LAA	Change to projections in LAA to better reflect projected economic growth
Meeting	12/06/2018	NWWN meeting	landfill capacities etc	Prepare MoU, plan for net self sufficiency, plan policy positive for new landfill
Email	12/10/2018	Publication invitation email	Invited to submit strategic issues	Consultation responses, no formal duty to cooperate requests
Meeting	22/11/2018	AWP	minuted	ratify LAA
Meeting	15/11/2018	Presentation to Lancashire Waste Partnership	minuted	No comments
Meeting	05/03/2019	Lancaster CC local plan minerals and waste meeting	South Carnforth, Heysham Port, MSA, SoCG	draft SoCG for Lancaster CC local plan

Email	12/04/2019	GM Merseyside and Warrington LAA	GM LAA consultation	Submit comment on insufficient assessment of demand
Meeting	23/04/2019	West Lancashire Borough Council D2C	Discuss representations received during consultation	LCC agreed to look at some changes to reflect comments
Meeting	20191016	AWP	Minuted. Std agenda. MSA and proximal sterilisation. Lancaster inquiry.	LAA revisions and ratification.
Email	20200325	Cheshire East LAA	Comment on lack of quantification of shortfall.	
Meeting	20200520	AWP	Minuted. Warrington SoCG	
Email	20200703	GM Merseyside and Warrington LAA	Comment on inadequacy of assessment of demand	
Meeting	20201105	AWP	minuted. LAA of CE issues reiterated. LAA of GMetc issues discussed	
Meeting	20201207	Crown Estate NWMPAs	minuted	potential for and issues around marine dredged discussed
Meeting	20210107	NWWN meeting	minuted	further work needed on joint position of information on landfill and EFW capacity
Meeting	20210629	AWP	minuted	
Meeting	20210708	NWWN meeting	minuted	
Meeting	20210720	Pendle D2C meeting	minuted	some changes to draft Plan agreed to resolve issues
Meeting	20210721	Fylde D2C meeting	minuted	some changes to draft Plan agreed to resolve issues
Meeting	20210727	Wyre D2C meeting	minuted	some changes to draft Plan agreed to resolve issues
Meeting	20210802	Hyndburn D2C meeting	minuted	some changes to draft Plan agreed to resolve issues
Meeting	20210803	Rosendale D2C meeting	minuted	some changes to draft Plan agreed to resolve issues

Meeting	20210802	Central Lancashire D2C meeting	minuted	some changes to draft Plan agreed to resolve issues
Meeting	20210804	Lancaster D2C meeting	minuted	some changes to draft Plan agreed to resolve issues
Meeting	20210811	Burnley D2C meeting	minuted	some changes to draft Plan agreed to resolve issues
Email	20210830	LAA consultation with neighbours and functionally linked authorities		Minor changes to LAA
Meeting	20211124	NWAWP	Minuted	LAA ratified
Meeting	20211126	Ribble Valley D2C meeting	Minuted	some changes to draft Plan agreed to resolve issues
Meeting	20220113	NWAWP Marine Planning and Crown Estates	Minuted	
Meeting	20220310	NWAWP Marine Planning	Minuted	

Appendix 1 Waste Planning Applications Granted

2009 Planning Permissions (1/4/2009 - 31/3/2010)

Application Number	Location	Proposal	Capacity (Tonnes)
01/07/1233	Ellel Crag Quarry Lancaster	Retrospective Change Of Use of land to inert recycling facility erection of new building and ancillary parking in association with transfer station.	70
05/09/0071	Westby Landfill Site Annas Road Westby	Extension to existing transfer station building to allow the dry storage of baled paper card and plastic materials.	120
01/09/0278	Overton Playing Fields Off Lancaster Road Overton	Raising levels of the playing field by importation of inert waste	10,000
01/09/0316	Morecambe Metals Northgate White Lund Estate Morecambe	Change Of Use of existing garage for the storage and treatment of end of life vehicles.	2,500
03/09/0369	Hickeys Garage, Pendle Trading Estate, Clitheroe Road, Clitheroe	Change Of Use from light engineering plant depot to waste transfer station.	75,000
01/09/0521	39a Lune Industrial Estate Lancaster	Storage, de-pollution and dismantling of end of life vehicles.	Dismantling 300-400 vehicles annually
11/09/0215	Unit 6 & 7 Holme Road Clayton Le Moors Accrington	Change Of Use from haulage yard and garage area To form extension to existing waste transfer station and change of use of existing storage area to allow the storage of processed waste.	25,000
11/09/0226	Unit D6-11 Junction 7 Business Park Blackburn Road Clayton Le Moors	Change Of Use from B2 (storage and manufacturing) to sui generis (waste treatment recycling facility) for the recycling of end of life tyres and wire from tyres and the transfer of waste plastic and the provision of two external storage silos and a cyclone.	83,000
01/09/0639	Leapers Wood Quarry Kellet Road Carnforth	Inert aggregate recycling facility.	55,000
03/09/0633	Miles Fox (Haulage) Ltd Salthill Industrial Est Lincoln Way Clitheroe	Change Of Use of building and part of depot to a waste transfer station.	100,000
06/09/0550	B5 Red Scar Industrial Estate Longridge Road Preston	Change Of Use to recycling facility including crushing and screening of aggregate waste material.	75,000

2010 Planning Permissions 1/4/2010 - 31/3/2011)

Application Number	Location	Proposal	Capacity (Tonnes)
14/10/0452	Waterbarn Mill Newchurch Road Stacksteads Bacup	Change Of Use from industrial thermoplastic recycling plant to waste transfer station.	10,000
14/10/0324	Tong Farm Tong Lane Bacup	Retrospective application for mineral working and the importation of soil/subsoil for the purposes of restoration.	
11/10/0299	Brookside Mill Brookside Street Oswaldtwistle	Change Of Use from b2 general industrial to vehicle depollution/recycling operation sui generis	10 vehicles per week
08/10/0319	Pd Logistics Pingwood Lane Kirkby	Retrospective application for change of use of existing timber storage use to allow storage of domestic recyclable material.	25,000
07/10/0146	Lancashire Enterprise Business Park Centurion Way Leyland Pr26 6tz	Change Of Use from general industrial to waste transfer station.	75,000
06/10/0169	Unit 31 Former Interbrew Unit Longridge Road Preston	Change Of Use of land and buildings from storage and distribution centre b8 to a waste recycling centre sui generis predominantly for the recycling and storage of ferrous and non ferrous metals waste electronic and electrical equipment and end of life vehicles.	425,000
02/10/0205	10 Beacon Road Poulton Business Park Poulton Le Fylde	Retrospective application for change of use of land and building from waste transfer station to an end of life Vehicle processing and recycling centre.	2,500
02/08/1116	Iron House Farm Lancaster Road Out Rawcliffe	Retrospective application for change of use of land to form composting site.	10,000

2011 Planning Permissions 1/4/2011 - 31/3/2012

Application Number	Location	Proposal	Capacity (Tonnes)
12/10/0668	Unit 2 Balderstone Lane Heasandford Industrial Estate, Burnley	Retention of part of unit 2 as a waste transfer station.	30
08/11/0527	Unit 2 Simonswood Industrial Estate Simonswood	Retrospective application for change of use to an inert recycling centre including processing area and access/haul roads.	500,000
08/11/0324	Viridor Gerrard Place Gillibrand Skelmersdale	L section installation and plastic storage bay.	200,000
06/11/0842	Guild Park Cumeragh Lane Whittingham	Retrospective application for the change of use of land and buildings for the purpose of importing sorting segregating bulking up and removal of Lancashire care NHS foundation trust waste.	101
06/11/0559	Croft Street Ashton Preston	Change Of Use from distribution warehouse to waste metal recycling.	1,200
02/11/0184	Unit 8, Burn Hall Industrial Estate, Venture Road Thornton-Cleveleys	Change Of Use from general industrial to waste transfer station for commercial waste including demolition and modification of existing buildings, erection of waste transfer building, materials recovery facility plant, and perimeter fencing.	75,000

2012 Planning Permissions 1/4/2012 - 31/3/2013

Application Number	Location	Proposal	Capacity (Tonnes)
12/12/0083	125 Park Road Padiham Burnley	Change Of Use of existing premises to a waste transfer station including partial demolition of the building to form a new access and erection of an open fronted sorting shed.	75,000
12/12/0021	Unit 3 Grove Mill Grove Lane Padiham	Retrospective application for use of existing industrial unit for a fully indoor depollution recycling and reconditioning of vehicles and parts facility.	75,000
09/12/0868	Clayton Hall Landfill Site Dawson Lane Whittle Le Woods	Extension to waste sorting and recycling centre building to connect with the existing waste transfer station. Increase in the roof height of the existing building to create continuity additional external water tanks electrical cabinets and the creation of additional car parking spaces.	150,000
08/11/1283	Unit 3/4 Simonswood Industrial Estate Off Stopgate Lane Simonswood Knowsley	Change Of Use from authorised treatment facility for end of life vehicles to processing and recycling of waste wood and virgin wood including shredding screening and storage of raw and processed materials and the siting of a 15m long weighbridge demountable offices and car parking facilities.	140,000
07/12/0355	Unit 12 Centurion Way Farington Leyland	Temporary household waste recycling centre until 31 December 2012.	
06/12/0705	Unit D6 Longridge Road Ribbleton Preston	Change Of Use from storage yard to silt waste dewatering facility the siting of two demountable units a toilet block one secure container eight tipping bays water separator one storage tank lighting and four car parking spaces.	5,000
06/12/0463	Roman Way Fulwood Preston	Change Of Use from car park to treatment plant (silt waste de-watering facility) including siting of one demountable units two parking spaces five tipping bays water separator two storage tanks gates and fencing.	5,000
05/12/0246	Clifton Marsh Landfill Site, Lytham Road, Clifton, Preston	Change Of Use to a mixed use for a wood shredding operation and for an open air window composting operation.	130,000
01/12/0948	Back Land Site, Heysham Business Park, Middleton, Morecambe	Retrospective application for the change of use to soil and aggregate recycling facility.	75,000

01/12/0778	Ken Allen Autowreckers, Northgate White Lund Industrial Estate, Morecambe	Application for Change Of Use of gills auto engineers from auto repair business to scrap metal recycling facility and retrospective application for change of use of land to scrap car storage area.	80
------------	--	--	----

2013 Planning Permissions 1/4/2013 - 31/3/2014

Application Number	Location	Proposal	Capacity (Tonnes)
14/13/0374	Fletcher Bank Quarry, Manchester Road, Ramsbottom	Construction and operation of an anaerobic digestion plant including a main reception building, biogas holder, associated storage tanks, 2 CHP engines, standby flare, service yard, weighbridge and offices and water management lagoon.	45,000
14/13/0178	Unit 4 Hudhey Industrial Estate, Hudhey Road, Haslingden	Change Of Use from warehouse to waste tyre recycling centre.	6,000
13/13/0109	Riverside Mill, Charles Street/Reedyford Road, Nelson	Proposed recovery and exportation of construction materials from inert waste.	75,000
12/13/0025	Unit 4 Britannia Mill Ruskin Street Burnley	Change Of Use from general industrial to waste transfer station.	5,200
11/13/0147	Parkinson Sheet Metal, Unit 2 Charter Street, Accrington	Change Of Use from B2 to sui generis use for a vehicle depollution recycling operation.	60
11/13/0050	Yard (Formerly Uk Safe Storage), Heys Lane, Great Harwood	Change Of Use to vehicle depollution/recycling operation including erection of industrial building and provision of one office cabin and three storage containers.	200
06/13/0173	Rowan Scrap Metals Ltd, Rough Hey Industrial Estate, Ribblesdale, Preston	Change Of Use of part of the site from scrap metal and vehicle decommissioning to inert and excavation waste transfer activity with treatment including retrospective permission for retention of concrete immovable sound barrier.	75,000
05/13/0431	Unit 2, Scafell Road, Queensway Industrial Estate, St Annes	Change Of Use from general industrial unit (B2) to metal recycling processing unit centre.	3,000
03/13/0452	Willcross Farm, Skipton Old Road, Gisburn	Demolition of farm buildings and construction of an anaerobic digester plant for the production of electricity from crops and livestock manures including one digester tank, a silage storage area, digestate lagoon and flare stack.	11,000

2014 Planning Permissions 1/4/2014 - 31/3/2015

Application Number	Location	Proposal	Capacity (Tonnes)
LCC/2014/0153	Former Garstang Household Waste Recycling Centre, Brockholes Way, Cloughton, Catterall	Continued use of recycling centre including an additional 6 containers for use as staff welfare, storage, repair and resale of items and including the stationing of up to 5 HGVS.	1,000
LCC/2014/0120	Clifton Marsh Landfill Site, Lytham Road, Clifton, Preston	Non compliance with conditions 5 and 8 of planning permission 05/13/0696 to extend the hours of working for composting and wood shredding operations and to increase the stockpile height of waste materials from 5m to 10m.	170,000
LCC/2014/0100	Bezza House, Bezza Lane, Samlesbury	Importation and laying of subsoil and excavated material and topsoiling to fill in hollow and form lawned garden.	990
LCC/2014/0082	Land Off Sydney Street, Accrington	Change of use from sui generis car dealership to sui generis vehicle parts sales and end of life vehicle centre with associated uses.	75,000
LCC/2014/0064	Land West Of Tomlinson Road, Tomlinson Industrial Estate, Leyland	Change of use to inert waste transfer and storage, construction of a concrete track and loop for vehicles and plant manoeuvring, site office cabin, welfare cabin and weighbridge.	75,000
LCC/2014/0059	Viridor Polymer And Recycling Facility, Gerrard Place, Gillibrand Industrial Estate, Skelmersdale	Erection of three polytunnels to store bailed plastics stored externally on the site.	20,000
LCC/2014/0055	Tong Farm, Tong Lane, Bacup	Extension to quarry and restoration by means of infill with inert construction, demolition and excavation waste, the sorting, screening and export of recyclable material, the consolidation of existing permissions and the revision of approved working and restoration schemes.	60,000
LCC/2014/0043	Back Lane Quarry, Nether Kellet, Carnforth	Change of use from quarry to area for recycling of road planings and road base.	75,000
LCC/2014/0003	Tim Butler Plant Hire Ltd, Middleton Road, Middleton	Application for a lawful development certificate for the use of the site for the import, crushing, storage, recycling and distribution of inert materials including on site sales to the building supply trade, retention of crushing and screening machinery.	70,000

12/13/0509	Green Lane Mill, Stockbridge Road, Burnley	Retrospective application for change of use from B2 industrial to a vehicle recycling centre.	625
08/13/0151	Dalton Quarry, Lees Lane, Dalton	Variation of condition 10 of permission 08/09/0494 to allow exportation of 25,000 tonnes of sandstone per year for general sale.	160,000
05/13/0777	Gorst Farm, Lodge Lane, Elswick, Preston	Retrospective application for the retention of imported inert materials, partial infilling of pond, creation of a lake, formation of a new access and landscaping and extraction of sand.	38,800
05/13/0696	Clifton Marsh Landfill Site, Lytham Road, Clifton	Change of use of existing concrete pad to a combined use for open air windrow composting, wood shredding and road sweeping recycling.	150,000
01/13/1092	Hillam Lane Farm, Hillam Lane, Cockerham, Lancaster	Proposed additional ancillary buildings and plant and equipment as part of an approved anaerobic digestion plant.	40,555

2015 Planning Permissions (1/4/2015 - 31/3/2016)

Application Number	Location	Proposal	Capacity (Tonnes)
LCC/2015/0103	Whitemoss Horticultural, North Perimeter Road, Knowsley	Variation of condition 6 of planning permission ref 8/11/0528 to allow the importation of green wastes and aggregates between the hours of 06.00 to 18.30 Mondays to Fridays, 07.30 to 17.30 hours on Saturdays and 10.00 to 16.00 on Sundays and public holidays.	
LCC/2015/0084	Primet Foundry, Greenfield Road, Colne	Change of use of part of the site from foundry to end of life vehicle storage, dismantling, depollution and authorised treatment facility (sr2011 no3) also vehicle maintenance, repairs, office and amenity facilities.	150
LCC/2015/0076	Steel Point Staveley Road, Skelmersdale	Change of use of land from steel stockholders and associated storage to steel stockholders and associated storage including metal recycling.	3,000
LCC/2015/0026	Unit 1, Station Yard Factory, Station Road, Rufford	Retrospective change of use of land and existing building from light industrial (class b1) to a mixed use for light industrial (class b1) and storage and distribution (class b8) uses and the recycling of non-hazardous waste plastics, and the proposed erection of a warehouse building for the storage and distribution of materials associated with the uses.	10,000
LCC/2015/0021	Unit 9 St Lawrence Mill, Mill Street, Great Harwood	Change of use to end of life vehicle authorised treatment centre and car repairs.	8,000
LCC/2015/0014	Sandons Farm, Sandy Lane, Adlington, Chorley	Extension to the area of phased extraction of sand and gravel and infilling with inert waste for restoration purposes, back to agriculture and conservation.	68,000
LCC/2015/0009	Land West of Tomlinson Road, Tomlinson Road Industrial Estate, Leyland	Change of use to inert waste transfer and storage, construction of concrete track and loop for vehicles and plant manoeuvring, site office cabin, welfare cabin and weighbridge.	75,000
LCC/2014/0162	Clifton Marsh Landfill Site, Preston New Road, Newton with Clifton	Variation of conditions 1 and 2b of permissions 05/09/0376 and 06/09/0395 to allow landfilling and land raising to be extended until 31 December 2035 and restored within 12 months of cessation of landfilling and land raising and to amend the final restored landform.	
11/13/0264	Whinney Hill Quarry and Landfill Site, Whinney Hill Road, Altham, Accrington	The extension of Whinney Hill Quarry (phases 2 to 4) and the restoration by means of partial infill with inert construction, demolition and excavation waste and ancillary activities.	3,300,000

2016 Planning Permissions (1/4/2016 - 31/3/2017)

Application Number	Location	Proposal	Capacity (Tonnes)
LCC/2017/0031	Unit 1a, Summit Works, Manchester Road, Burnley	Change Of Use from b2 industrial unit to a recycling facility, together with a new roller shutter door from the front access road/car park.	1,000
LCC/2017/0029	Blackburn Waste Water Treatment Works, Cuerdale Lane, Samlesbury	New primary, secondary and tertiary treatment plant with new sludge treatment plant, extension of the waste water treatment works, ground reprofiling with surplus excavated material, and landscaping.	
LCC/2017/0014	Salt Ayre, Salt Ayre Lane, Lancaster.	Variation of conditions 1 to allow continued use of the material recycling facility until 31 December 2022 with restoration no later than 31 December 2023 and condition 8 to allow for a scheme and programme for the restoration of the site to be submitted within 3 months of the cessation of use of the material recycling facility of permission LCC/2014/0006.	
LCC/2017/0013	Salt Ayre, Salt Ayre Lane, Lancaster.	Variation of conditions 1 to allow continued use of the material recycling facility until 31 December 2022 with restoration no later than 31 December 2023 and condition 8 to allow for a scheme and programme for the restoration of the site to be submitted within 3 months of the cessation of use of the material recycling facility of permission LCC/2014/0005.	
LCC/2017/0008	Unit 3 Simonswood Industrial Estate Off Stopgate Lane Simonswood Knowsley	Variation of condition 4 of permission 08/11/1283 to also permit the storage and blending of soils, sand/minerals and organic compost.	195,000
LCC/2017/0007	Tower House, Stopgate Lane, Simonswood	Extension to existing portal framed shed to house 4 no biomass boilers with associated fuel silos and drying floor	5,500
LCC/2017/0003	Simonswood Moss, North Perimeter Road, Knowsley Industrial Park, Kirkby	Change of use from composting storage to green waste composting within existing operational area.	150,000
LCC/2016/0094	Blackburn Waste Water Treatment Works, Cuerdale Lane, Samlesbury.	Biomethane process plant to purify the biogas resulting from the sludge treatment process including the erection of kiosks and stacks.	24

LCC/2016/0084	Foggs Farm, Hobbs Lane, Cloughton On Brock.	Change of use of existing buildings and land to use for the production of agricultural bedding materials from imported waste paper products including installation of drying equipment and biomass boiler, installation of flue and weighbridge, erection of new storage building, formation of hard standing, access alterations and siting of two portacabin buildings for offices / rest rooms and toilet / shower block.	12,500
LCC/2016/0079	D6B, Red Scar Industrial Estate, Longridge Road, Preston	Change of use to recycling facility including crushing and screening of aggregate waste materials, construction of storage bays and container units for use as site office and lock up facilities.	78,000
LCC/2016/0076	Primet Works, Greenfield Road, Colne	Change of use from engineering to vehicle storage, vehicle dismantle, vehicle depollution and authorised treatment facility.	150
LCC/2016/0071	Wyreside Farm, Rawcliffe Road, St Michaels On Wyre	Construction of a micro anaerobic digestion plant comprising of digester vessel and combined head and power unit fed by on farm waste (dairy slurry)	
LCC/2016/0061	Dunald Mill Quarry, Long Dales Lane, Nether Kellet.	Variation of condition 1 of planning permission 01/06/1004 to permit the use of the existing batching plant until 21 February 2022.	
LCC/2016/0052	Halton East Waste Water Treatment Works, Dennybeck Lane, Halton	Change of use of land to waste water treatment and erection of a control kiosk.	
LCC/2016/0035	Lydiat Lane Sand Quarry, Lydiat Lane, Farington, Leyland.	Variation of condition 1 of permission 07/11/0739 to allow the development to continue until 01 June 2031 and variation of condition 26 of permission 07/11/0739 to allow site operations from 06.30am Mondays to Fridays, in relation to the extraction of sand and restoration to agricultural land by the importation of waste.	
CRT/2016/0042	Recycling Lives, Longridge Road, Preston	Application for lawful development certificate for an existing use of a pre-shredder to continue metal and waste recycling.	

2017 Planning Permissions (1/4/2017 - 31/3/2018)

Application Number	Location	Proposal	Capacity (Tonnes/cubic meters)
LCC/2017/0007	Tower House, Stopgate Lane, Simonswood	Extension to existing portal framed shed to house 4 no biomass boilers with associated fuel silos and drying floor.	5,500 tonnes
LCC/2016/0091	Blackpool Skip Hire, Beacon Road ,Poulton-Le-Fylde	Erection of building and installation of biomass boiler together with the erection of an 11m external exhaust stack.	2,000 tonnes
LCC/2016/0059	Sandons Farm, Sandy Lane, Adlington, Chorley	Extension to the area of phased extraction of sand, gravel and clay, followed by infilling with inert waste for restoration purposes, back to agriculture, woodland, and nature conservation including a 5m high screen bund.	75,000 m ³
LCC/2017/0003	Simonswood Moss, North Perimeter Road, Knowsley Industrial Park, Kirkby	Change of use from composting storage to green waste composting within existing operational area.	35,000 tonnes
LCC/2017/0037	Unit 10 Fairfield House, Fairfield Street, Accrington	Change of use to vehicle dismantle, vehicle depollution and authorised treatment facility.	150 tonnes
LCC/2017/0050	D13 And D14 Redscar Industrial Estate, Longridge Road, Preston	Extension to existing transfer station and relocation of the weighbridge.	120,000 tonnes
LCC/2017/0055	Units 116 To 118, Clydesdale Place, Moss Side Industrial Estate, Leyland	Change of use of unit 116 to waste processing and storage facility including new canopy, development of external tank farm (16 tanks), proposed new building on unit 118, raising of roof height on unit 117 and relocation and consolidation of car parking spaces.	
LCC/2017/0073	D16 Red Scar Industrial Estate, Longridge Road, Preston	Change Of Use of unit from a depot for waste collection vehicles and an associated office to a waste transfer station for the transfer of commercial and industrial waste oils and solvents and cleaning products, and the erection of an associated portal framed, steel clad building.	45 tonnes

2018 Planning Permissions (1/4/2018 - 31/3/2019)

Application Number	Location	Proposal	Capacity permitted	Type	
LCC/2018/0050	Tower House, Stopgate Lane, Simonswood	Erection of a new wash plant facility for processing of inert waste materials to produce recycled aggregates	100,000	CDE washing screening	new
LCC/2018/0032	Field Between the A683 And The B6480 Hornby	Importation of waste material to restore water logged hollow created by collapsed drain and highway surface water run off and restoration of site to agricultural grazing with rebuilding of drain.	4,800	inert deposit to land	new
LCC/2018/0019	Westby Landfill Site, Annas Road, Westby With Plumpton	Variation of condition 1 of permission 05/09/0152 to allow the period of landfill/recycling/waste transfer operations to continue to 1 June 2028	-	landfill and CDE CI recycling	time extension to 1/6/2028
LCC/2017/0095	Land at Little Quarry, Hill Top Lane, Whittle-Le-Woods	Importation of soils to meet stability requirements for approved residential development and cutting back of rock outcrop to provide a stable landform	56,000m ³	soils	additional

2019 Planning Permissions 1/4/2019 - 31/3/2020

Application Number	Location	Proposal	Capacity permitted	Type	
LCC/2019/0054	The Laurels At Charnock, Charnock Richard Golf Course , Preston Road, Charnock Richard	Remodelling of Charnock Richard golf course incorporating the reconfiguration of 9 holes and localised raising of levels using imported inert materials.	26,742m ³	Recovery - deposit to land	New
LCC/2019/0055	Land at Winmara, Lancaster New Road, Cabus	Change of use of buildings to create a metal transfer station (sui generis) and ancillary office.	500	Transfer/storage	New
LCC/2019/0029	Land at Red Scar Industrial Estate	Energy recovery facility (ERF) fuelled by non-hazardous household, commercial and industrial waste and refuse derived fuel incorporating erf main building, air cooled condensers, weighbridges and gatehouse, site roads, landscaping including bunds, car parking, surface water swale and wetland, electricity sub-station building and switchyard, pump house, fire water storage tanks, other ancillary plant and equipment, fencing and site security, realignment of existing roadway and drainage ditch through the site, underground power cable network, temporary construction compound.	395,000	Recovery - Energy from waste	New
LCC/2019/0021	Imperial Road, Heysham	The development of an energy recovery facility comprising: the erection and operation of an energy from waste building including offices, workshop and visitor/education facilities; air cooled condensers; internal access roads; car, cycle and coach parking; perimeter fencing; electricity sub-stations; weighbridges; weighbridge office; contractors office; water and diesel tanks; lighting; heat pipes; hardstandings; earthworks; landscaping and other ancillary infrastructure.	330,000	Recovery – Energy from waste	New

10/19/0495	Suez Recycling and Recovery UK Ltd Lower Eccleshill Road Eccleshill Darwen BB3 0RP	Demolition of existing waste transfer and materials recycling buildings and construction of an energy from waste facility (EFW) with ancillary infrastructure and landscaping.	500,000	Recovery – energy from waste	New, demolition of existing transfer station
------------	--	--	---------	------------------------------	--

2020 Planning Permissions (01/04/2020 – 31/03/2021)

Application Number	Location	Proposal	Capacity permitted	Type
LCC/2020/0053	Unit 21-22 Roman Way Longridge Road Preston	Change Of Use of land and buildings to a sui generis waste recycling use for the recycling and storage of waste electronic and electrical equipment plastic.	25,000	wee plastic separation dismantling treatment
LCC/2020/0040	Thomas Graham And Sons - Warehouse 2, Northgate Business Park, Middlegate, White Lund Industrial Estate, Morecambe	Retrospective application for a waste transfer station for offensive waste - mainly non-clinical hygiene waste.	12	nonclinical hygiene
LCC/2020/0029	Former Hanson PLC Site, Whitegate, White Lund Industrial Estate	Change of Use of land to a waste transfer station as an extension to the existing waste management site/ waste transfer station and skip business.	75,000	CDE recycling

2021 Planning Permissions (01/04/2021 – 31/03/2022)

Application Number	Location	Proposal	Capacity permitted	Type	
LCC/2021/0045	410 Southport Road, Scarisbrick	Retrospective change of use of haulage yard to waste recycling (skips)	15,000 T	Sorting of non-hazardous waste with transfer to other waste handlers	
LCC/2019/0040	Ellel Crag Quarry, Bay Horse Road, Ellel, Lancaster	Variation of condition 1 of planning permission 01/08/0629 to amend the time scale for the completion of landfilling of Ellel Crag Quarry from 30 June 2023 to 30 June 2038, with the whole of the site to be finally restored by 30 June 2039, or within 12 months from the cessation of landfilling operations, whichever is the sooner.	0	N/A	Variation of condition - extension of time - no change to quantities
LCC/2019/0030	Ellel Crag Quarry, Bay Horse Road, Ellel, Lancaster	Proposed eastern lateral extension to the existing gritstone and shale quarry followed by infilling of the excavation with imported inert waste to be completed by the 30 June 2038, together with the rebuilding and extension of the derelict farmhouse for use as site office accommodation, with the whole of the site to be finally restored by 30 June 2039, or within 12 months from the cessation of landfilling operations, whichever is the sooner.	1,672,713 m3	N/A	Inert landfill

Appendix 2: Minerals Planning Applications

Application Number	Location	Proposal	Decision type	Financial Year Determined	Capacity (Tonnes)
06/07/1197	Bradleys Sand Pit, Lightfoot Green Lane, Fulwood, Preston	Extension of existing quarry to allow the extraction of sand and gravel over a period of 12 years.	Granted	2008/09	700,000
14/10/0324	Tong Farm, Tong Lane, Bacup	Retrospective application for mineral working and the importation of soil/subsoil for the purposes of restoration.	Granted	2010/11	755,000
03/12/0940	Lanehead Quarry, Ribblesdale Works, Clitheroe	Variation of Condition 13 of planning permissions 03/96/0772 03/96/0773 03/96/0774 to allow part of Lanehead Quarry to be deepened to minus 31 metres AOD (s106 signed 2019).	Granted	2013/14	10,000,000
LCC/2014/0055	Tong Farm, Tong Lane, Bacup	Extension to quarry and restoration by means of infill with inert construction, demolition and excavation waste, the sorting, screening and export of recyclable material, the consolidation of existing permissions and the revisions of approved working and restoration schemes.	Granted	2014/15	
LCC/2014/0170	Brinscall Quarry, Twist Moor Lane, Withnell, Chorley	Extension for approx. 1.16 million tonnes to provide for a local need for building stone and aggregates (2015).	Granted	2015/16	1,160,000
LCC/2015/0014	Sandons Farm, Sandy Lane, Adlington, Chorley	Extension to the area of phased extraction of sand and gravel and infilling with inert waste for restoration purposes, back to agriculture and conservation.	Granted	2015/16	68,000
LCC/2015/0069	Clayton Hall Landfill Site,	Revised working scheme including amended levels and extension of the mineral extraction and landfill areas.	Granted	2016/17	120,000

	Dawson Lane, Whittle-le-Woods				
LCC/2016/0059	Sandsons Farm, Sandy Lane, Adlington, Chorley	Extension to the area of phased extraction of sand, gravel and clay, followed by infilling with inert waste for restoration purposes back to agriculture, woodland and nature conservation.	Granted	2016/17	75,500m ³
LCC/2016/0035	Lydiate Land Sand Quarry, Lydiate Lane, Farington, Leyland	Variation of Condition 1 of permission 07/11/0739 to allow the development to continue until 1/6/2031 and variation of condition 26 of permission 07/11/0739 to allow site operations from 6:30am Monday-Friday in relation to the extraction of sand and restoration to agricultural land by the importance of waste.	Granted	2016/17	
LCC/2017/0040	Tarnacre Quarry, Tarnacre Lane, St Michaels on Wyre	Application for the variation of conditions 1 and 2 of permission 02/13/0342 to allow the duration of sand and gravel extraction to be extended to 31 March 2027 and to amend the working scheme and water management proposals	Granted	2018/19	
14/13/0515	Hutchbank Quarry, Haslingden	Application for determination of conditions for permission 14/94/0355 (as amended by 14/95/0506) for the winning and working of minerals.	Granted	2018/19	
LCC/2018/0044	Claughton Manor Brickworks, Hornby Rd, Claughton	Variation of condition 1 of planning permission 1/88/955 to extend the duration of the brick manufacturing operations 31 December 2036 with restoration of the site by 31 December 2037.	Granted	2019/20	
LCC/2020/0018	Tong Quarry, Tong Lane, Bacup	Extension of quarry with restoration by means of infill with inert construction demolition and excavation waste together with ancillary activities, and the consolidation of existing planning permission.	Granted	2020/21	1,000,000 tonnes sandstone 270,000 tonnes fireclay 580,000m ³ void for inert waste

LCC/2019/0030	Ellel Crag Quarry, Bay Horse Road, Ellel, Lancaster	Proposed eastern lateral extension to the existing gritstone and shale quarry followed by infilling of the excavation with imported inert waste to be completed by the 30 June 2038, together with the rebuilding and extension of the derelict farmhouse for use as site office accommodation, with the whole of the site to be finally restored by 30 June 2039, or within 12 months from the cessation of landfilling operations, whichever is the sooner.	Granted	2020/21	1,790,000T This is an extension to the east of the existing cut and the materials to be used for processing for sand and also shales for brick making.
LCC/2019/0041	Ellel Crag Quarry, Bay Horse Road, Ellel, Lancaster	Variation of condition 1 of planning permission LCC/2016/0001 to amend the time scale for the inert waste transfer and recycling operations, and the wood shredding/chipping operations, from 30 June 2023 to 30 June 2038 or within 6 months of completion of the landfilling activities at Ellel Crag quarry, whichever is the earlier, with restoration of the site within a further 12 months	Granted	2020/21	Variation of condition - extension of time - site restoration
LCC/2020/0073	Catlow East Quarry Catlow Fold Farm Southfield Lane Nelson	Planning application to vary condition 1 of planning permission 13/12/0585 to extend the period of time to process stone and restore the site to 31/12/2028	Granted	2021/22	

