

# M6 Junction 33

**Statement of Community Consultation**

**Document Reference: 14/SOCC/04**

[www.lancashire.gov.uk](http://www.lancashire.gov.uk)



**Document Control**

**Project Title:** M6 Junction 33

**Document Title:** Statement of Community Consultation

**Document Reference:** 14/SOCC/04

**Version No:** 4

	<b>Created By</b>	<b>Checked By</b>	<b>Date Comments provided</b>
<b>Version 1</b> <i>02/09/2019</i>	Niamh O'Sullivan	Phill Wilson	07/09/2019
<b>Version 2</b> <i>26/05/2020</i>	Niamh O'Sullivan	Sharon McGuinness	24/06/2020
<b>Version 3</b> <i>30/06/2020</i>	Niamh O'Sullivan	Mark Cassidy	31/07/2020
<b>Version 4</b> <i>03/08/2020</i>	Niamh O'Sullivan		
<b>Document Status</b>	Final draft		

## Table of Contents

<b>1. Statement of Community Consultation (SoCC)</b> .....	<b>3</b>
<b>2. Proposal summary</b> .....	<b>4</b>
<b>3. Purpose and context of consultation</b> .....	<b>6</b>
<b>4. What the consultation is about?</b> .....	<b>7</b>
<b>5. Consultation Strategy</b> .....	<b>9</b>
<b>6. Who we will consult</b> .....	<b>9</b>
<b>7. How we will consult</b> .....	<b>10</b>
<b>8. Indicative consultation timetable</b> .....	<b>15</b>
<b>9. How we will respond to consultation</b> .....	<b>15</b>
<b>10. Further information</b> .....	<b>17</b>
<b>11. Appendix A; Primary Consultation Area</b> .....	<b>18</b>
<b>12. Appendix B: Link to Documents</b> .....	<b>19</b>

# 1 Statement of Community Consultation

- 1.1.1 Lancashire County Council (the applicant) is preparing to submit an application for a Development Consent Order (DCO) to the Infrastructure Planning Commission (IPC) to gain the necessary powers to construct an improved Junction 33 on M6 motorway with additional connectivity to the existing highway network, This application will be made under the Planning Act 2008, (later referred to as “the Act”).
- 1.1.2 The Planning Act 2008 established the Infrastructure Planning Commission as an independent public body responsible for the assessment and approval of nationally significant infrastructure projects.
- 1.1.3 The Act requires applicants to undertake public consultation in advance of submission of a DCO application to the IPC. A Statement of Community Consultation (SoCC) must be prepared, setting out how the applicant proposes to consult people living in the vicinity of the land about the proposals for the scheme.
- 1.1.4 At the same time as consulting with the local community and the public, Lancashire County Council will be consulting with local authorities, statutory consultees and stakeholders.
- 1.1.5 The applicant will not be in a position to submit final proposals for the scheme and the draft Development Consent Order until the completion of the consultations.
- 1.1.6 The greatest opportunity that the public will have to comment upon the proposals will be during this pre-application consultation periods.
- 1.1.7 Following the pre-application consultation, the only way people will have the opportunity to comment is by registering with the IPC and making formal

written representation; or making oral representation at a hearing if they are held.

- 1.1.8 Lancashire County Council will undertake consultation in accordance with the SoCC and is committed to being open and transparent in the dealings with the local community and key stakeholders throughout the pre-application consultation process. Our SoCC, and public notice, to be published in the press in advance of the public consultation period.

## 2 Proposal Summary

### 2.1.1 Objectives of scheme

- Improve the M6 Junction 33
- Investigate the connections to the proposed Bailrigg Garden Village; and,
- Relieve congestion in Galgate (centred on the main crossroads in the village) to remove the Air Quality Management Area.

- 2.1.2 Lancashire County Council has developed options to alter the layout of M6 Junction 33 to alleviate forecasted congestion and provide connectivity to the Bailrigg Garden Village.

### 2.1.3 The feasibility stage looked at

- the need and justification;
- identified a broad study/search area;
- assessed baseline information;
- undertook surveys;
- identified constraints;

- reviewed policies;
- undertook stakeholder consultation; and,
- produced corridor/design options.

#### 2.1.4 The development of design options

- decided the best environmental locations for required infrastructure;
- developed and refined design options;
- identified potential mitigation measures and their feasibility;
- undertook stakeholder consultation; and,
- selected corridor/design options.

#### 2.1.5 The work was undertaken in three consecutive stages:

Stage 1 – Identification of preliminary alignment options

Stage 2 – Refinement of route alignment options

Stage 3 – Identification of preferred corridor alignment(s)

#### 2.1.6 A transport assessment, noise assessment and air quality assessment were undertaken on the refined alignment options.

#### 2.1.7 Once a preferred option is decided, we will start work on the planning application supporting documents. This will firstly be a scoping report followed by environmental surveys to support an Environmental Statement. A second consultation will take place in autumn 2022 on the Preliminary Environmental Information (PEI) before submission of the planning application in summer 2023.

## 3 Purpose and Context of Consultation

3.1.1 Lancashire County Council want to provide the opportunity for the community to express their opinion and become involved in developing the details of the scheme. By consulting at this pre-application stage;

- residents and businesses have the opportunity to comment on and express their opinions about proposals that will affect their community;
- the consultation generates feedback that can influence the details of the design proposal and any proposed mitigation measures;
- we should be able to develop the best possible scheme by working together; and,
- accurate information will be provided to those directly affected by the scheme helping to allay fears and reduce uncertainty.

### 3.2 Other Consultation's in the Area

3.2.1 A joint consultation on the options for M6 Junction 33 scheme and options for the city centre within the Lancaster City Centre Movement and Public Realm Strategy will take place in autumn 2020. This will allow residents to understand and contribute to the changes in Lancaster city centre and at Junction 33 in South Lancaster.

3.2.2 Lancaster City Council has undertaken works on the Local Plan and Lancaster South Area Action Plan. At a Full Council meeting on 29 July 2020, Lancaster City Council voted to adopt the Lancaster District Local Plan.

3.2.3 The Local Plans DPD's will be reviewed to enable consideration of the implications of Lancaster City Council's declaration of a Climate Change

Emergency in January 2019. It is likely that the first consultation process regarding the review will commence between late-2020 and early-2021

- 3.2.4 Lancaster City Council are starting preparatory work on the Lancaster South Area Action Plan this will include workshops in autumn 2020 and involve a public consultation on a draft document in early 2021. With consultation on the publication document in summer 2021.

## **4 What the consultations are about?**

### **4.1 Scope of the Consultations**

- 4.1.1 There will be two consultation stages. The first stage will be a non-statutory consultation on a number of proposed alignments to decide on a preferred option this will take place in autumn 2020. The second stage will be a statutory consultation on the Preliminary Environmental Information (PEI) this will take place in autumn 2022.

#### **Design Standards**

- 4.1.2 The Design Manual for Roads and Bridges sets out design parameters that provide standards and best practice guidance to achieve operational safety. Our junction layouts and the overall alignment will be designed to comply with the design standards and must remain so. While we will take on board community comments and consider where opinions or comments can be incorporated, design parameters may restrict our ability to make some suggested changes.

#### **Other Issues**

- 4.1.3 For the statutory consultation The Act specifies that we must consult on the proposals for a minimum of 28 days. In agreement with Lancaster City



Council and Lancashire County Council the applicant plans to undertake consultation over a period of 6 weeks.

- 4.1.4 Lancashire County Council will continue to engage with the community, stakeholders, and statutory consultees in advance and after this period, but for comments and suggestions to be considered for incorporation into the scheme, we must receive them by the close of the consultation periods.

## 5 Consultation Strategy

- 5.1.1 We are at the early stage of this scheme and we will have two consultation stages. The first stage will be a non-statutory consultation on a number of proposed alignments to decide on a preferred option. The second stage will be a statutory consultation on the Preliminary Environmental Information (PEI) of the preferred option.
- 5.1.2 The PEI summarises what environmental assessments have been undertaken, those which we plan to complete and a preliminary assessment of the key environmental issues. It will also outline the suite of mitigation, enhancement and compensation measures that will be proposed.
- 5.1.3 We will produce a biannual newsletter summarising the scheme, the process and the key changes, detailing when a consultation will take place and results of the consultations.
- 5.1.4 A virtual exhibition will be held throughout the consultation period.
- 5.1.5 Upon completion of the consultation periods, we will prepare a Consultation Report. This report will summarise the comments that we have received to the proposals. The changes that have been made to the design in response to consultation will be detailed. Where suggestions have not been incorporated into the design feedback will be provided as to why.

5.1.6 When the Consultation Report has been completed, we will issue a notification in the Garstang Courier, Lancaster Guardian and Morecambe The Visitor newspapers. This notification will summarise the key changes that have been incorporated and will detail where the report is available to view. Copies of the report will be available on the scheme website and paper copies will be made available upon request. A notification that the Consultation Report is available will also go out on our social media.

## **6 Who we will consult**

6.1.1 Under section 47 of the Act, Lancashire County Council is required to consult people living in the vicinity of the land we propose to develop. The vicinity of the land has broader implications than those that live within the area; it extends to those who work in and or use the area (this can include small businesses, leisure users etc.).

6.1.2 To do this we will inform everyone living in residences in our primary consultation zone by sending every property a newsletter. Within this zone, we have also included commercial buildings. A map showing our primary public consultation zone can be found in Appendix A. This will be the primary consultation area.

6.1.3 We will notify and send copies of the newsletter to all parish and town councils in the Lancaster District, Wyre District and South Lakeland District. This will be the secondary consultation area.

6.1.4 However, people outside these areas who may wish to comment are welcome to view the consultation online or contact us directly, through the project website or the telephone number included within Section 10. To encourage wider knowledge of the consultation process we will seek agreement with major employment sites within the area, retail outlets and key local transport service areas to reach tourists to allow us to put up information posters detailing our proposals and consultation events.

6.1.5 In line with published guidance we intend to take a broad view of our duty to consult under section 47 of the Act and will consult with;

- parish and town councils;
- organisations representing the business community including the Chamber of Commerce and the Lancaster District Local Strategic Partnership; and.
- we will also offer to consult with the local tourism industry and visitors to the area at their request.

6.1.6 Outside the scope of the section 47 consultation, but under section 42 of the Act we are also required to consult the following groups during statutory consultation, a process that will run in parallel to this community consultation.

- Statutory consultees, as specified in regulations. This includes regional stakeholders such as the Environment Agency and Natural England, amongst others;
- The local authorities within whose boundaries the land falls; Lancashire County Council and Lancaster City Council;
- Owners, lessees, tenants and occupiers of the land within the areas we propose to develop and those affected by the proposals; and,
- All neighbouring local authorities that share a boundary with Lancaster City Council.

## **7 How We Will Consult**

7.1.1 During the pre-application phase, we will utilise a range of communication techniques to ensure that the public and stakeholders have an opportunity to comment on proposals for the M6 Junction 33 scheme.

7.1.2 We will work closely with the local authorities to identify and engage with those who do not want to make formal written representations or feel that they cannot engage with the planning process.

7.1.3 Our proposed consultation methods are set out below:

- **Virtual consultation exhibition:** we will hold virtual exhibition online during the consultation period. This will provide an opportunity for people to attend at any time that suits them.

The virtual exhibition will have display boards outlining the options/ or scheme (depending on the consultation), the changes and key elements of the proposals. Selected design drawings and preliminary environmental information will also be available to view at these consultations.

- **Residents meetings (Second stage statutory consultation on PEI):** where changes to the proposals have a direct impact on residents, we will arrange meetings with those affected to discuss what has changed, the effects of the changes and address any concerns. Our engineer and estates team members will attend these meetings to ensure that we can provide answers to any queries.
- **Stakeholder meetings (Second stage statutory consultation on PEI):** during the consultation period we will invite key stakeholders to meetings to discuss our proposals and seek their comment.

## Other Communications Techniques

7.1.4 We intend to use the following communication techniques to explain our proposals to the local community and stakeholders, advertise the consultation, obtain comments and publicise the outcome of the consultation process

- **Newsletters:** we will distribute our newsletter 'Transforming Lancaster Travel' to the community and stakeholders prior to the consultation period. The newsletters will be used to explain the scheme, the IPC process and how to become involved, detail the consultation timetable and provide feedback on the changes that have resulted in response to community comment. Newsletters will be left in public areas such as libraries and supermarkets for people to pick up if interested (when Covid-19 restrictions are lifted and this is safe to do so). Copies of newsletters will also be available on the scheme website. The newsletter issue detailing our consultation and how to engage with the IPC process will be directly mailed to people within the primary consultation area as mentioned in Section 6. Copies of the newsletter will also be sent to all councils in the secondary consultation area.
- **Website:** we will continue to update the website ([www.lancashire.gov.uk/Transforming-Lancaster-Travel](http://www.lancashire.gov.uk/Transforming-Lancaster-Travel)) with progress, key events and details of consultations etc. Consultation documents will also be placed on the website during the consultation period. This will provide an opportunity for stakeholders to view and consider areas they may specifically wish to discuss. There will also be a facility to submit comments about the proposals via the scheme website [www.lancashire.gov.uk/Transforming-Lancaster-Travel](http://www.lancashire.gov.uk/Transforming-Lancaster-Travel). The entry will provide a brief overview of the project and options for users to submit their views.
- **Media:** The local media, including the Garstang Courier, Lancaster Guardian and Morecambe The Visitor, will be used to provide regular

features and updates about our progress and proposals. We will also utilise them to publish details of our consultations and the final proposed DCO application.

- **Council publications:** we will approach Lancaster City Council and other local councils and parishes to put information and articles into their publications.
- **Information posters / boards:** we will set up information posters / boards (Second stage statutory consultation on PEI): outlining key information about the scheme. These information posters / boards will be located at major employment sites within the area, retail outlets and key local transport service areas to reach tourists. We will also provide further details of the scheme and consultation event details by providing a summary leaflets at these locations people can take away with them.
- **Telephone contact** 01772 535479 messaging service can be used to contact the project team with queries and questions.
- **Twitter** [www.twitter.com/lancashirecc](http://www.twitter.com/lancashirecc): The county council's twitter account will be used to promote the consultation process. Regular tweets will be posted to promote consultation as well as promote the range of ways in which stakeholders can engage in the consultation process.
- **Facebook** [www.facebook.com/lancashirecc](http://www.facebook.com/lancashirecc): The corporate Facebook page will be used to highlight the project and the consultation process. Users will be encouraged to post their comments and opinions to the page.

7.1.5 Throughout the consultation process comments can be supplied in writing using the project email address or postal address in Section 10 or online through the Have Your Say service; [www.lancashire.gov.uk/haveyoursay](http://www.lancashire.gov.uk/haveyoursay).

## Deposit of documents

7.1.6 For the second stage statutory consultation on PEI in 2022 (not available for 2020 consultation) we will deposit documents at the following locations during the consultation period

Location of available information	Availability
<p><b>Lancaster city centre</b></p> <p>Lancaster Town Hall, Dalton Square, Lancaster, LA1 1PW</p> <p>Lancaster Library, Market Square, LA1 1HY</p>	<p>Available for inspection at Reception between the hours of 09:00 – 17:00 Monday to Friday</p> <p>Mon, Tues, Thurs, Fri, Sat 09:00 – 17:00 Wed, 09:00 – 19:00</p>
<p><b>Morecambe town centre</b></p> <p>Morecambe Town Hall, Market Road, Morecambe, LA1 5AF</p>	<p>Available for inspection at Reception between the hours of 09:00 – 17:00 Monday to Friday</p>
<p><b>Galgate</b></p> <p>Ellel Village Hall, Main Road, Galgate LA2 0LQ</p>	<p>Available for inspection by appointment</p>
<p><b>Scotforth</b></p> <p>St Paul's Parish Hall, Scotforth Road, LA1 4TS</p>	<p>Available for inspection Monday to Friday 09.30-12:00 (subject to change due to staff availability)</p>
<p><b>Preston city centre</b></p> <p>County Hall, Pitt Street, Preston, PR1 0LD</p>	<p>Available for inspection between the hours of 09:00 – 17:00 Monday to Friday</p>

## Feedback Following Consultation

- 7.1.7 Following the completion of the consultation exercise, we will produce a Consultation Report, as detailed in Section 5. This will be available to view at our website and hard copies available upon request.
- 7.1.8 A summary of the key changes brought about because of community comments will be published in the Garstang Courier, Lancaster Guardian and Morecambe The Visitor newspapers. We will also produce a newsletter with further details of the results of the consultation. This newsletter will be left in key locations such as libraries and supermarkets (when Covid-19 restrictions are lifted and this is safe to do so).for people to pick up, it will also be posted to those in primary consultation area and distributed by email to key stakeholder groups.

## 8 Indicative Consultation Timetable

- 8.1.1 A planned timetable for the pre-application consultation is shown below. This is indicative and may be subject to change depending upon how the scheme evolves, though we will make best efforts to achieve the dates shown.

Consultation	Start of Consultation	End of Consultation
Preferred Option Consultation	26 October 2020	04 December 2020
Preliminary Environmental Information Consultation	18 August 2022	30 September 2022



## 9 How We Will Respond to Consultation

9.1.1 Lancashire County Council will carefully consider the responses received during the consultation period. Upon completion of the consultation period, we will publish a Consultation Report on our website that will:

- provide a summary of the consultation process
- set out how we have complied with the Act and relevant guidance
- summarise the feedback received throughout the consultation process explain how we have taken account of the feedback from all consultees, the community, local authorities and the statutory consultees.
- describe how the Development Consent Order application has been influenced or directly changed in response to the feedback received explain where changes haven't been made in response to comments with a statement of reasons.
- detail any instances where we have not followed the advice of a relevant local authority or the guidance issued by the IPC and explain why.

9.1.2 This Consultation Report will be submitted to the IPC as part of the formal application and will be examined; if the IPC believe that the community consultation was insufficient or that Lancashire County Council were not fully committed to implementing any community suggestions or listening to feedback, the application may be rejected. Therefore, these rounds of consultation will be an opportunity for the local community to really influence the scheme proposals; knowing that the County Council will be accountable for ensuring they consider all reasonable proposals.

9.1.3 To ensure that the community are aware of how their feedback has been incorporated into the design we will;

- Publish the Consultation Report and make it available for the public to view via our website and paper copies will be made available upon request; and,
- Notify the community that the Consultation Report has been published through the local press, social media and our newsletter.

## 10 Further Information

10.1.1 For further information about this community consultation or the M6 Junction 33 proposals please:

- Visit the project website:  
[www.lancashire.gov.uk/Transforming-Lancaster-Travel](http://www.lancashire.gov.uk/Transforming-Lancaster-Travel)
- Email questions, comments or queries to: [TLT@lancashire.gov.uk](mailto:TLT@lancashire.gov.uk)
- Call us on 01772 535479
- Write to us at:

Transforming Lancaster Travel

Infrastructure Delivery Team

Lancashire County Council

County Hall

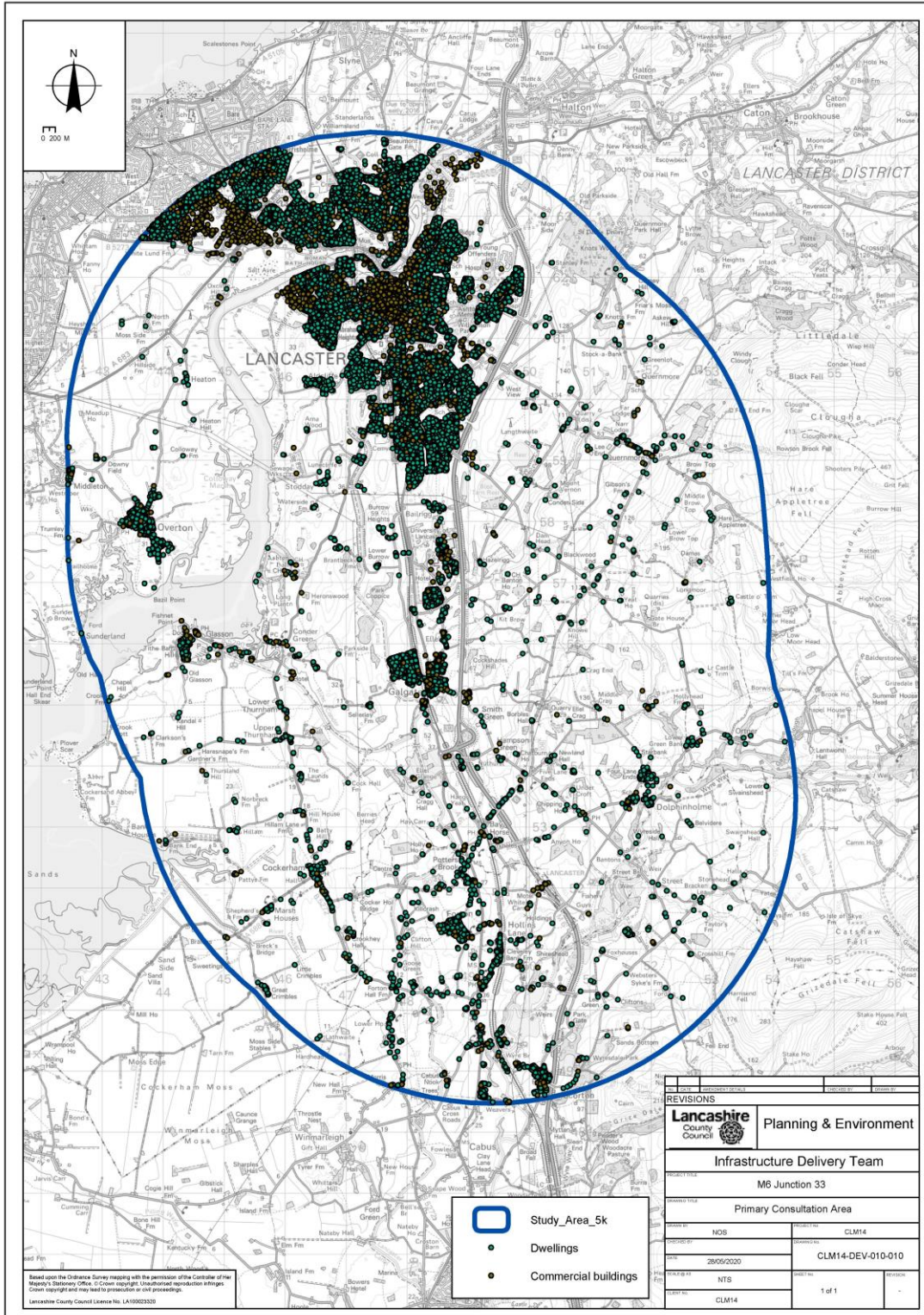
Pitt Street

Preston

PR1 0LD

# 11 Appendix A

## Primary Consultation Area



## 12 Appendix B

Link to documents:

The Planning Act 2008 - <https://www.legislation.gov.uk/ukpga/2008/29/contents>

Lancashire County Council, 2020, Summary Options Report -  
[www.lancashire.gov.uk/TransformingLancasterTravel](http://www.lancashire.gov.uk/TransformingLancasterTravel)

Lancashire County Council, 2020, Engineering Options Report -  
[www.lancashire.gov.uk/TransformingLancasterTravel](http://www.lancashire.gov.uk/TransformingLancasterTravel)

Jacobs, 2020, Traffic, Noise and Air Quality Report -  
[www.lancashire.gov.uk/TransformingLancasterTravel](http://www.lancashire.gov.uk/TransformingLancasterTravel)

Lancashire County Council, 2020, Lancaster City Centre Movement and Public Realm Strategy - [www.lancashire.gov.uk/TransformingLancasterTravel](http://www.lancashire.gov.uk/TransformingLancasterTravel)

Lancaster City Council, 2020, Lancaster Local Plan –  
<http://www.lancaster.gov.uk/planning/planning-policy/about-local-plan>

Highways England, 2019, Design Manual for Roads and Bridges -  
<https://www.standardsforhighways.co.uk/dmrb/>