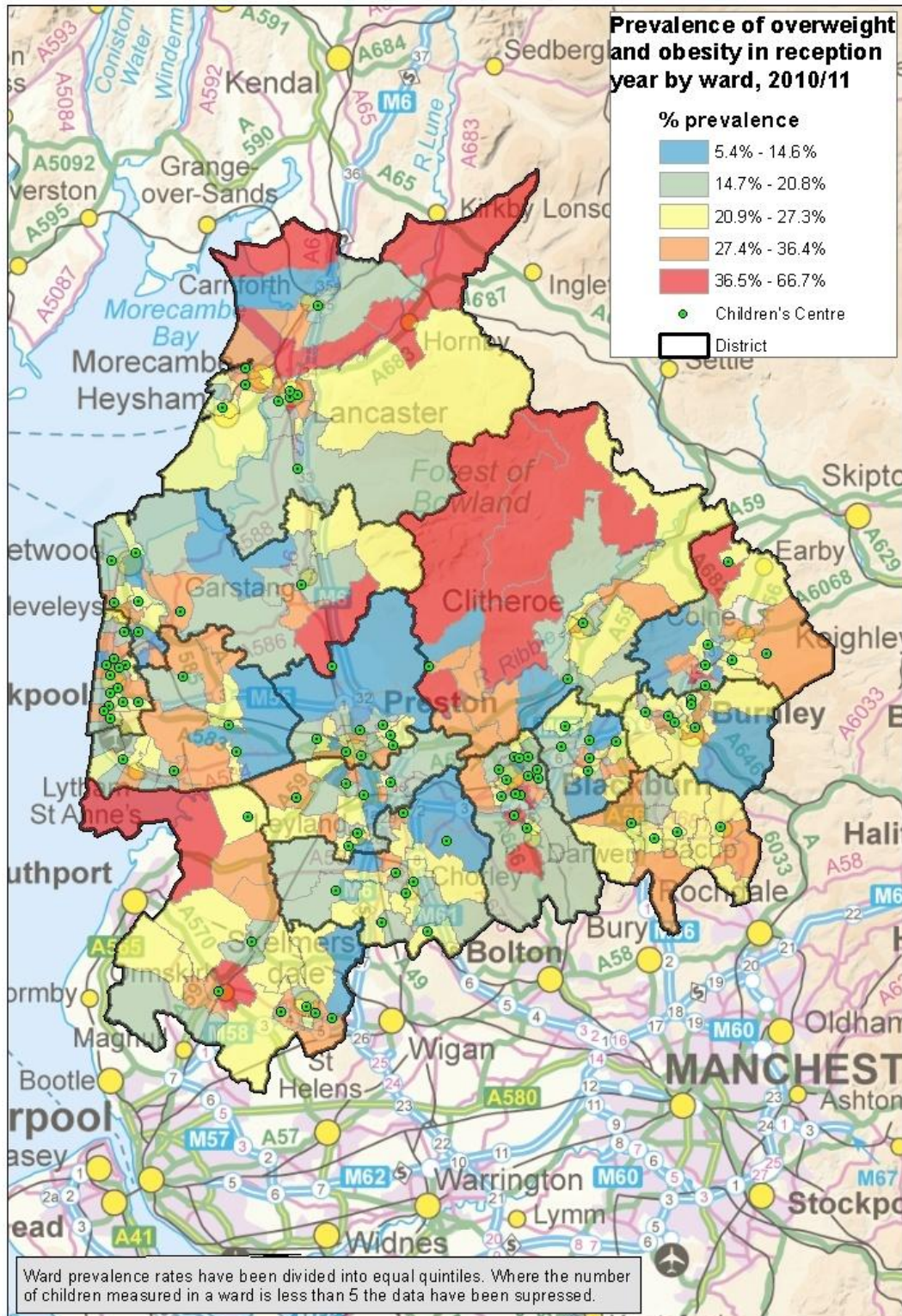


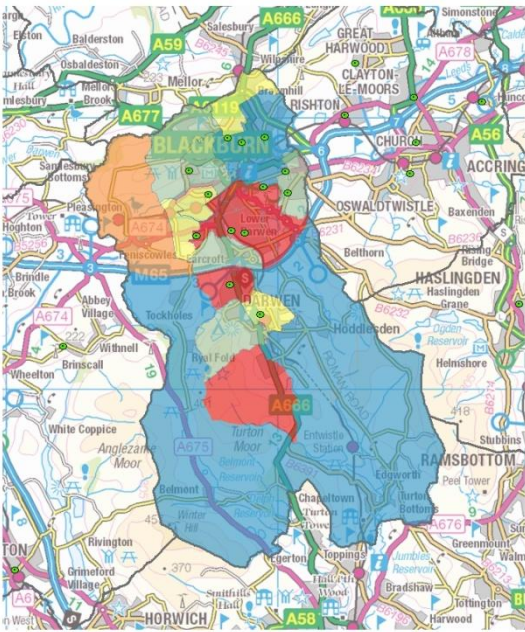
Appendix A - District level overweight and obesity maps

Reception year



Produced by the Lancashire JSNA team, January 2012 using data from the National Child Measurement Programme 2010/11.

Blackburn with Darwen



Prevalence of overweight and obesity in reception year by ward, 2010/11
 % prevalence

- 5.4% - 16.7%
- 16.8% - 21.2%
- 21.3% - 25.0%
- 25.1% - 29.7%
- 29.8% - 66.7%

Children's centre
 District

Produced by the Lancashire JSNA team, January 2012.

Data is divided into quintiles. In wards where fewer than 5 children were measured, the data have been suppressed.

Blackpool



Prevalence of overweight and obesity in reception year by ward, 2010/11
 % prevalence

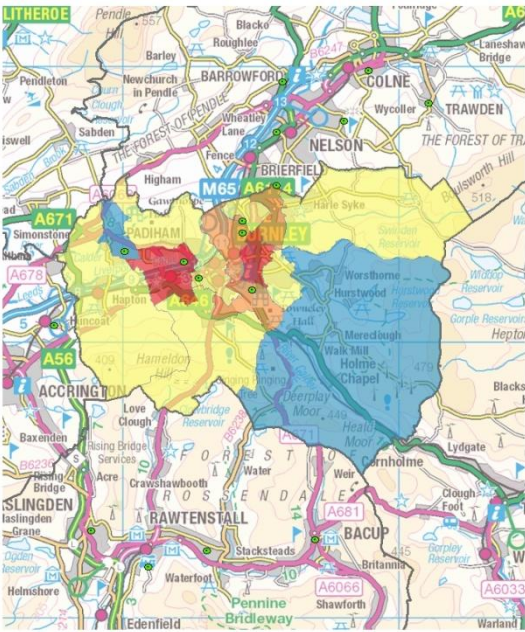
- 5.4% - 16.7%
- 16.8% - 21.2%
- 21.3% - 25.0%
- 25.1% - 29.7%
- 29.8% - 66.7%

Children's centre
 District

Produced by the Lancashire JSNA team, January 2012.

Data is divided into quintiles. In wards where fewer than 5 children were measured, the data have been suppressed.

Burnley



Prevalence of overweight and obesity in reception year by ward, 2010/11
 % prevalence

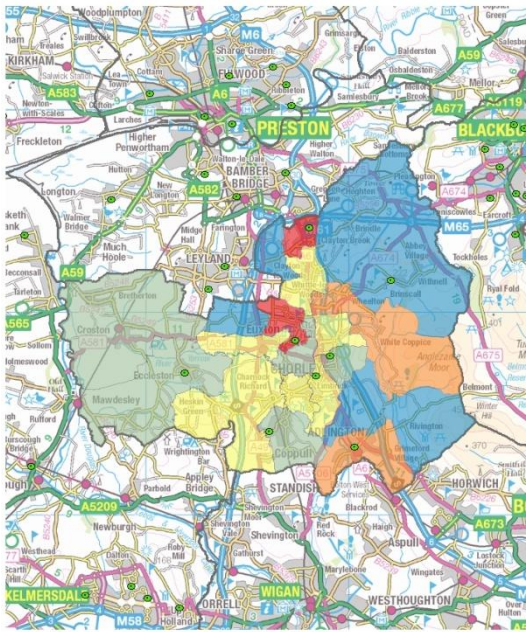
- 5.4% - 16.7%
- 16.8% - 21.2%
- 21.3% - 25.0%
- 25.1% - 29.7%
- 29.8% - 66.7%

Children's centre
 District

Produced by the Lancashire JSNA team, January 2012.

Data is divided into quintiles. In wards where fewer than 5 children were measured, the data have been suppressed.

Chorley



Prevalence of overweight and obesity in reception year by ward, 2010/11
 % prevalence

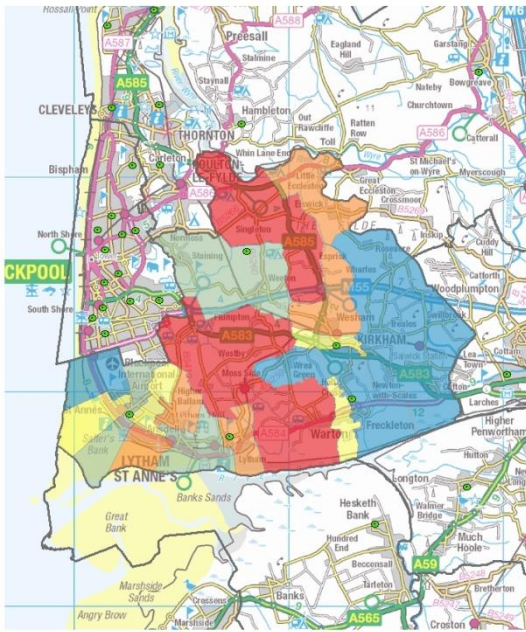
- 5.4% - 16.7%
- 16.8% - 21.2%
- 21.3% - 25.0%
- 25.1% - 29.7%
- 29.8% - 66.7%

Children's centre
 District

Produced by the Lancashire JSNA team, January 2012.

Data is divided into quintiles. In wards where fewer than 5 children were measured, the data have been suppressed.

Fylde



Prevalence of overweight and obesity in reception year by ward, 2010/11
 % prevalence

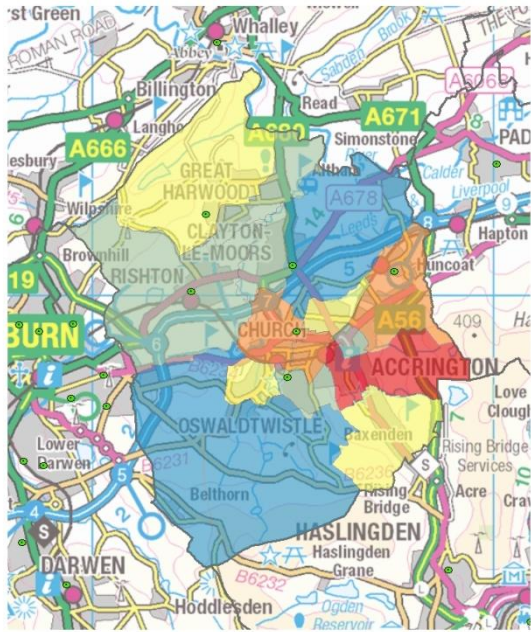
- 5.4% - 16.7%
- 16.8% - 21.2%
- 21.3% - 25.0%
- 25.1% - 29.7%
- 29.8% - 66.7%

● Children's centre
 □ District

Produced by the Lancashire JSNA team, January 2012.

Data is divided into quintiles. In wards where fewer than 5 children were measured, the data have been suppressed.

Hyndburn



Prevalence of overweight and obesity in reception year by ward, 2010/11
 % prevalence

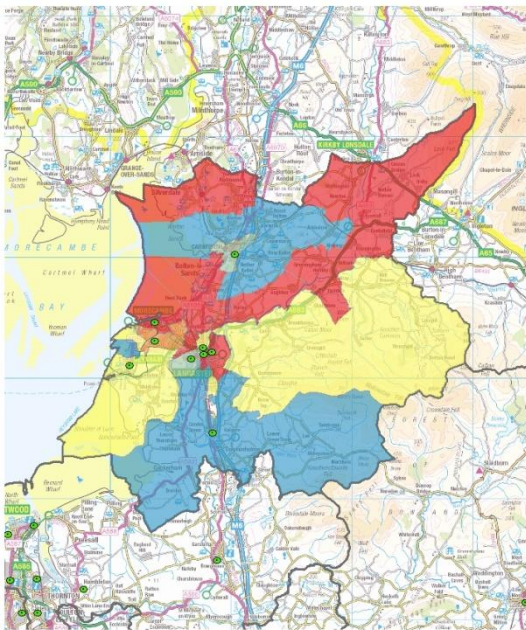
- 5.4% - 16.7%
- 16.8% - 21.2%
- 21.3% - 25.0%
- 25.1% - 29.7%
- 29.8% - 66.7%

● Children's centre
 □ District

Produced by the Lancashire JSNA team, January 2012.

Data is divided into quintiles. In wards where fewer than 5 children were measured, the data have been suppressed.

Lancaster



Prevalence of overweight and obesity in reception year by ward, 2010/11
 % prevalence

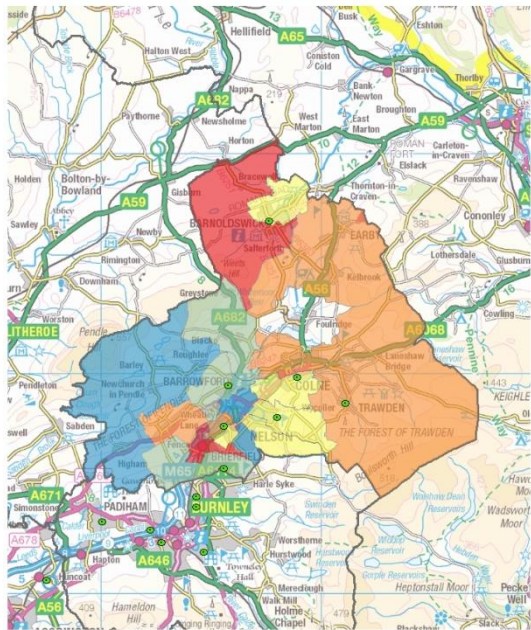
- 5.4% - 16.7%
- 16.8% - 21.2%
- 21.3% - 25.0%
- 25.1% - 29.7%
- 29.8% - 66.7%

● Children's centre
 □ District

Produced by the Lancashire JSNA team, January 2012.

Data is divided into quintiles. In wards where fewer than 5 children were measured, the data have been suppressed.

Pendle



Prevalence of overweight and obesity in reception year by ward, 2010/11
 % prevalence

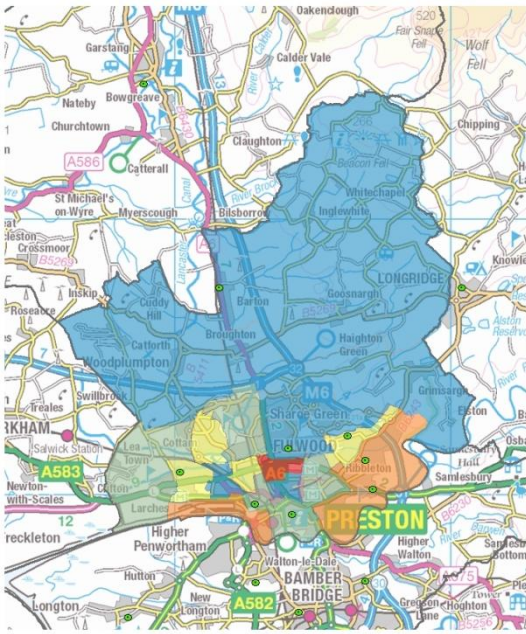
- 5.4% - 16.7%
- 16.8% - 21.2%
- 21.3% - 25.0%
- 25.1% - 29.7%
- 29.8% - 66.7%

● Children's centre
 □ District

Produced by the Lancashire JSNA team, January 2012.

Data is divided into quintiles. In wards where fewer than 5 children were measured, the data have been suppressed.

Preston



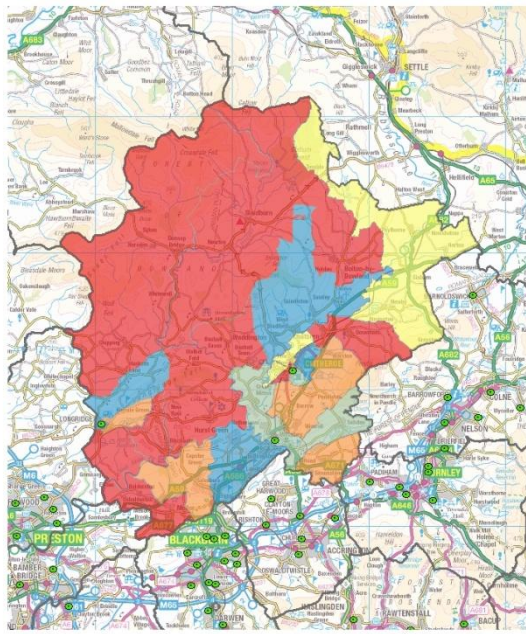
Prevalence of overweight and obesity in reception year by ward, 2010/11
 % prevalence

- 5.4% - 16.7%
- 16.8% - 21.2%
- 21.3% - 25.0%
- 25.1% - 29.7%
- 29.8% - 66.7%

Produced by the Lancashire JSNA team, January 2012.

Data is divided into quintiles. In wards where fewer than 5 children were measured, the data have been suppressed.

Ribble Valley



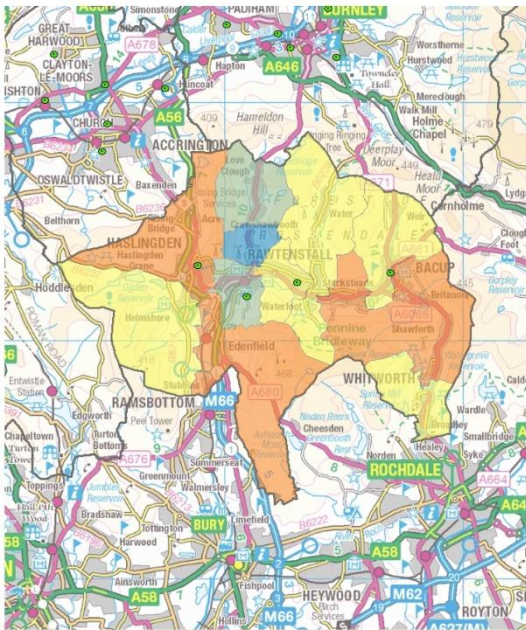
Prevalence of overweight and obesity in reception year by ward, 2010/11
 % prevalence

- 5.4% - 16.7%
- 16.8% - 21.2%
- 21.3% - 25.0%
- 25.1% - 29.7%
- 29.8% - 66.7%

Produced by the Lancashire JSNA team, January 2012.

Data is divided into quintiles. In wards where fewer than 5 children were measured, the data have been suppressed.

Rossendale



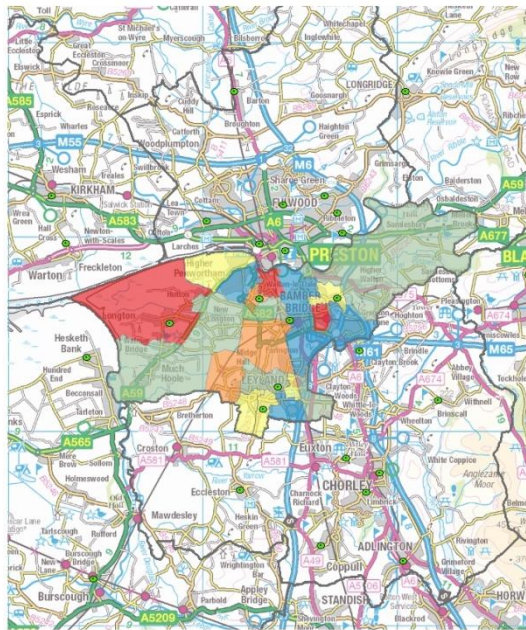
Prevalence of overweight and obesity in reception year by ward, 2010/11
 % prevalence

- 5.4% - 16.7%
- 16.8% - 21.2%
- 21.3% - 25.0%
- 25.1% - 29.7%
- 29.8% - 66.7%

Produced by the Lancashire JSNA team, January 2012.

Data is divided into quintiles. In wards where fewer than 5 children were measured, the data have been suppressed.

South Ribble



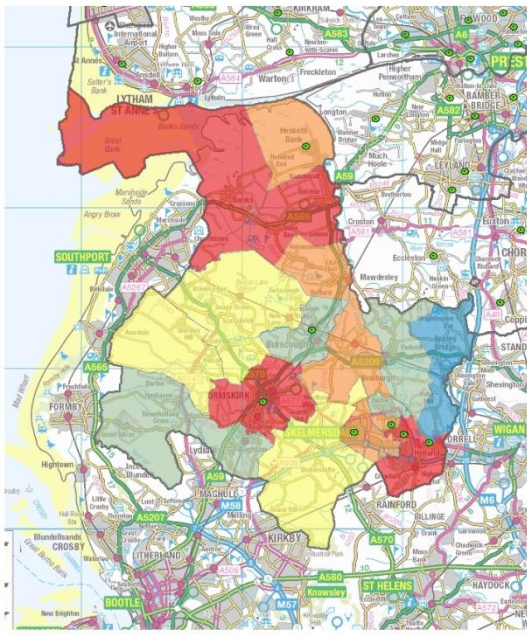
Prevalence of overweight and obesity in reception year by ward, 2010/11
 % prevalence

- 5.4% - 16.7%
- 16.8% - 21.2%
- 21.3% - 25.0%
- 25.1% - 29.7%
- 29.8% - 66.7%

Produced by the Lancashire JSNA team, January 2012.

Data is divided into quintiles. In wards where fewer than 5 children were measured, the data have been suppressed.

West Lancashire



Prevalence of overweight and obesity in reception year by ward, 2010/11
 % prevalence

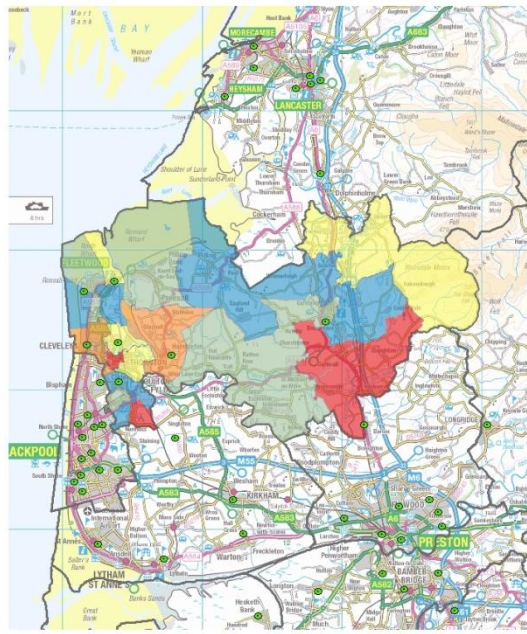
- 5.4% - 16.7%
- 16.8% - 21.2%
- 21.3% - 25.0%
- 25.1% - 29.7%
- 29.8% - 66.7%

● Children's centre
 □ District

Produced by the Lancashire JSNA team, January 2012.

Data is divided into quintiles. In wards where fewer than 5 children were measured, the data have been suppressed.

Wyre



Prevalence of overweight and obesity in reception year by ward, 2010/11
 % prevalence

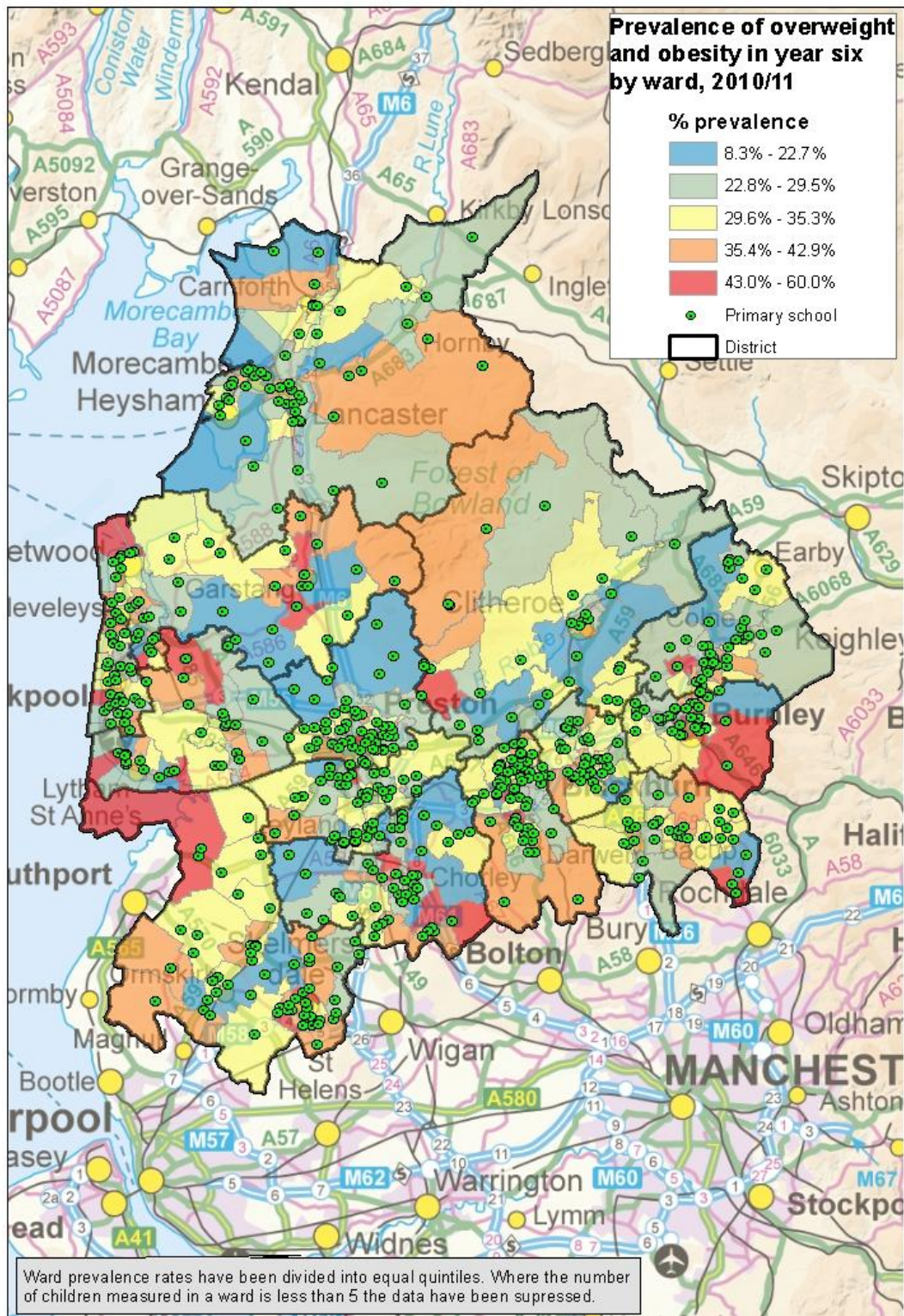
- 5.4% - 16.7%
- 16.8% - 21.2%
- 21.3% - 25.0%
- 25.1% - 29.7%
- 29.8% - 66.7%

● Children's centre
 □ District

Produced by the Lancashire JSNA team, January 2012.

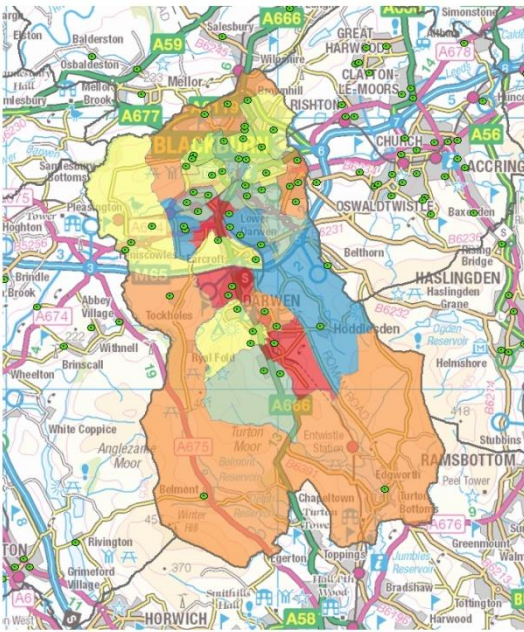
Data is divided into quintiles. In wards where fewer than 5 children were measured, the data have been suppressed.

Year six



Produced by the Lancashire JSNA team, January 2012 using data from the National Child Measurement Programme 2010/11.

Blackburn with Darwen



Prevalence of overweight and obesity in year six by ward, 2010/11
 % prevalence

- 8.3% - 25.0%
- 25.1% - 29.5%
- 29.6% - 33.3%
- 33.4% - 38.2%
- 38.3% - 60.0%

Produced by the Lancashire JSNA team, January 2012.

Data is divided into quintiles. In wards where fewer than 5 children were measured, the data have been suppressed.

Blackpool



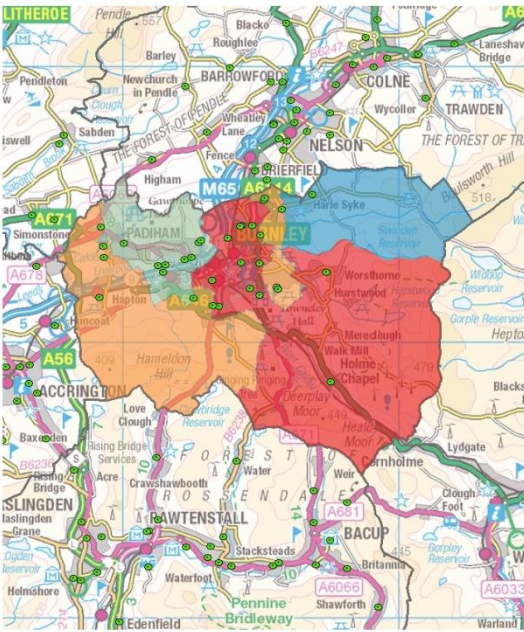
Prevalence of overweight and obesity in year six by ward, 2010/11
 % prevalence

- 8.3% - 25.0%
- 25.1% - 29.5%
- 29.6% - 33.3%
- 33.4% - 38.2%
- 38.3% - 60.0%

Produced by the Lancashire JSNA team, January 2012.

Data is divided into quintiles. In wards where fewer than 5 children were measured, the data have been suppressed.

Burnley



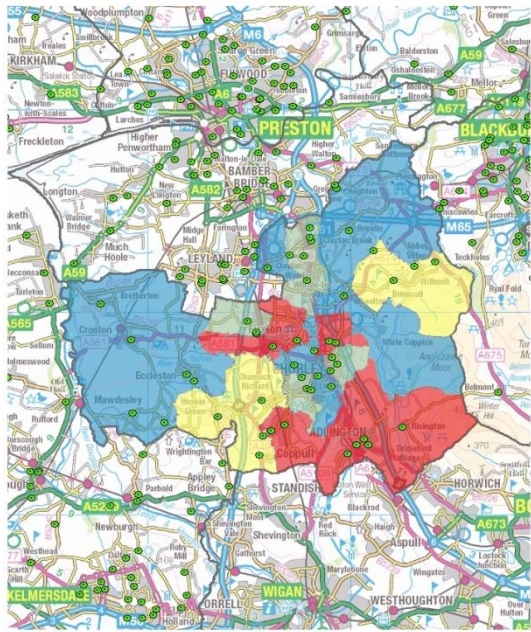
Prevalence of overweight and obesity in year six by ward, 2010/11
 % prevalence

- 8.3% - 25.0%
- 25.1% - 29.5%
- 29.6% - 33.3%
- 33.4% - 38.2%
- 38.3% - 60.0%

Produced by the Lancashire JSNA team, January 2012.

Data is divided into quintiles. In wards where fewer than 5 children were measured, the data have been suppressed.

Chorley



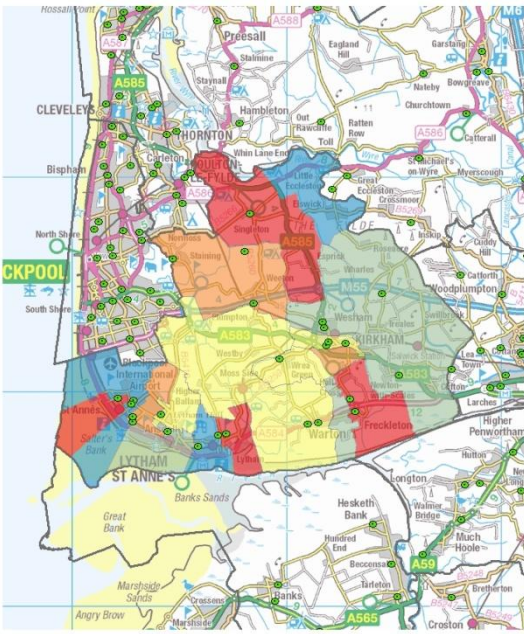
Prevalence of overweight and obesity in year six by ward, 2010/11
 % prevalence

- 8.3% - 25.0%
- 25.1% - 29.5%
- 29.6% - 33.3%
- 33.4% - 38.2%
- 38.3% - 60.0%

Produced by the Lancashire JSNA team, January 2012.

Data is divided into quintiles. In wards where fewer than 5 children were measured, the data have been suppressed.

Fylde



Prevalence of overweight and obesity in year six by ward, 2010/11
 % prevalence

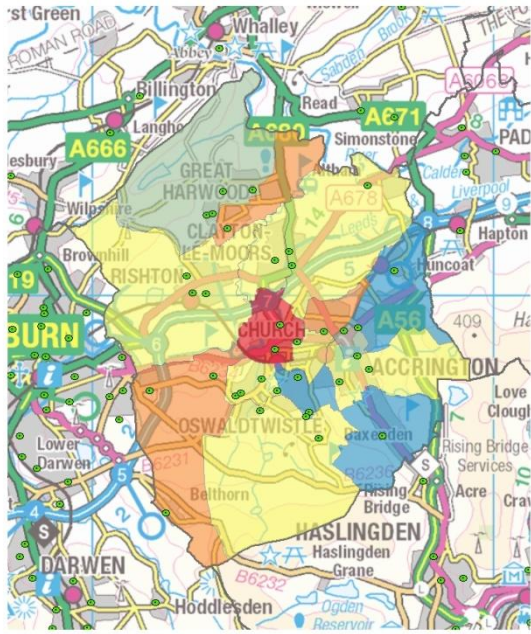
- 8.3% - 25.0%
- 25.1% - 29.5%
- 29.6% - 33.3%
- 33.4% - 38.2%
- 38.3% - 60.0%

● Primary school
 District

Produced by the Lancashire JSNA team, January 2012.

Data is divided into quintiles. In wards where fewer than 5 children were measured, the data have been suppressed.

Hyndburn



Prevalence of overweight and obesity in year six by ward, 2010/11
 % prevalence

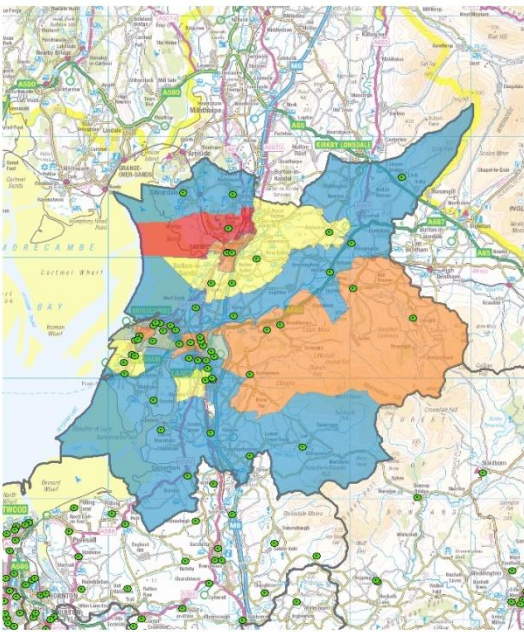
- 8.3% - 25.0%
- 25.1% - 29.5%
- 29.6% - 33.3%
- 33.4% - 38.2%
- 38.3% - 60.0%

● Primary school
 District

Produced by the Lancashire JSNA team, January 2012.

Data is divided into quintiles. In wards where fewer than 5 children were measured, the data have been suppressed.

Lancaster



Prevalence of overweight and obesity in year six by ward, 2010/11
 % prevalence

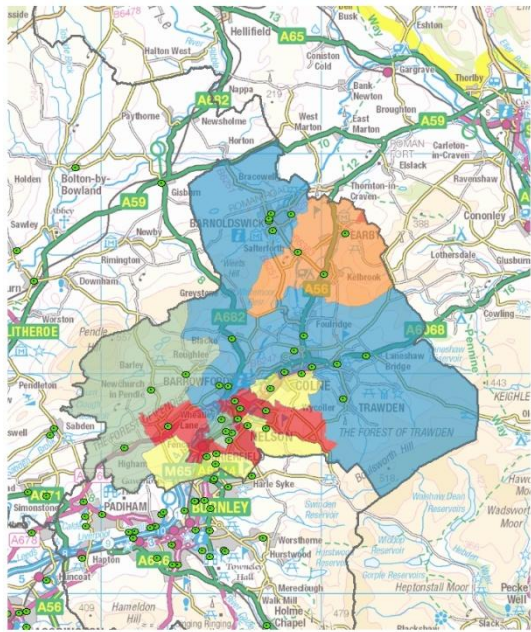
- 8.3% - 25.0%
- 25.1% - 29.5%
- 29.6% - 33.3%
- 33.4% - 38.2%
- 38.3% - 60.0%

● Primary school
 District

Produced by the Lancashire JSNA team, January 2012.

Data is divided into quintiles. In wards where fewer than 5 children were measured, the data have been suppressed.

Pendle



Prevalence of overweight and obesity in year six by ward, 2010/11
 % prevalence

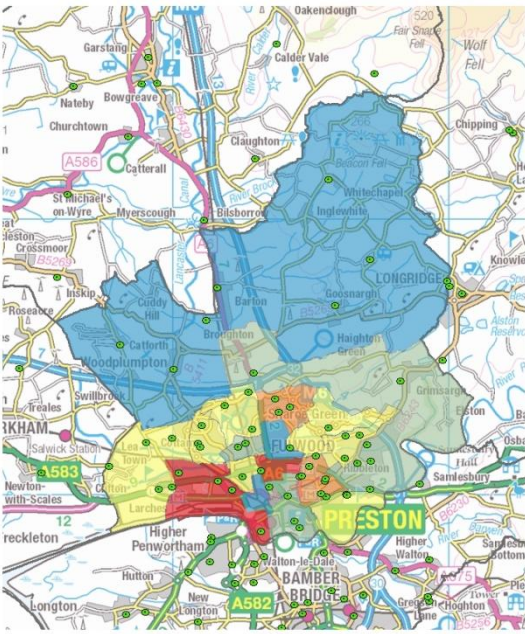
- 8.3% - 25.0%
- 25.1% - 29.5%
- 29.6% - 33.3%
- 33.4% - 38.2%
- 38.3% - 60.0%

● Primary school
 District

Produced by the Lancashire JSNA team, January 2012.

Data is divided into quintiles. In wards where fewer than 5 children were measured, the data have been suppressed.

Preston



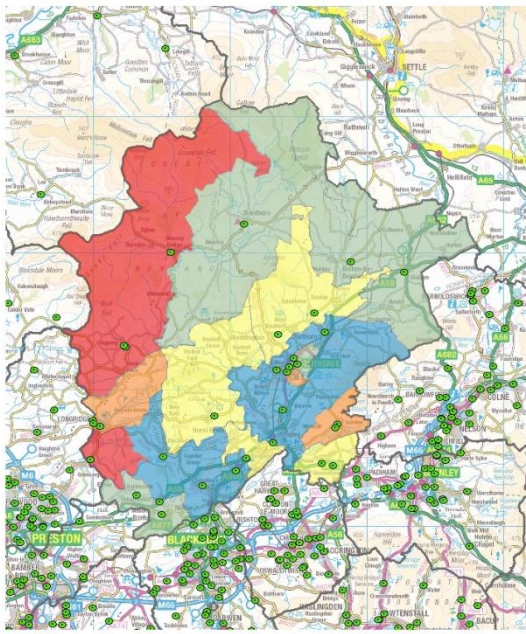
Prevalence of overweight and obesity in year six by ward, 2010/11
 % prevalence

- 8.3% - 25.0%
- 25.1% - 29.5%
- 29.6% - 33.3%
- 33.4% - 38.2%
- 38.3% - 60.0%

Produced by the Lancashire JSNA team, January 2012.

Data is divided into quintiles. In wards where fewer than 5 children were measured, the data have been suppressed.

Ribble Valley



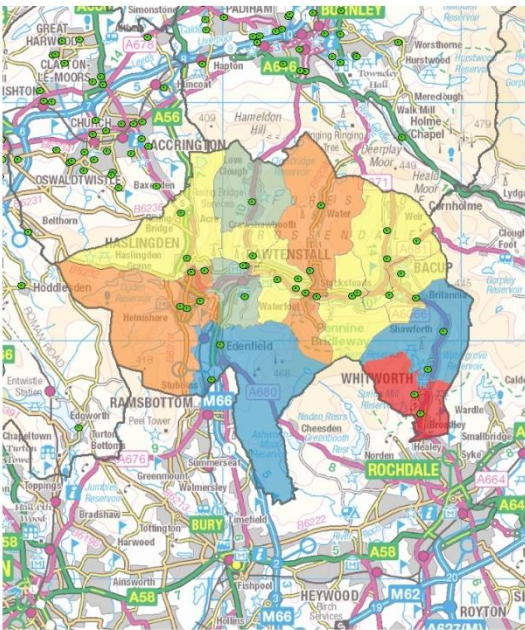
Prevalence of overweight and obesity in year six by ward, 2010/11
 % prevalence

- 8.3% - 25.0%
- 25.1% - 29.5%
- 29.6% - 33.3%
- 33.4% - 38.2%
- 38.3% - 60.0%

Produced by the Lancashire JSNA team, January 2012.

Data is divided into quintiles. In wards where fewer than 5 children were measured, the data have been suppressed.

Rossendale



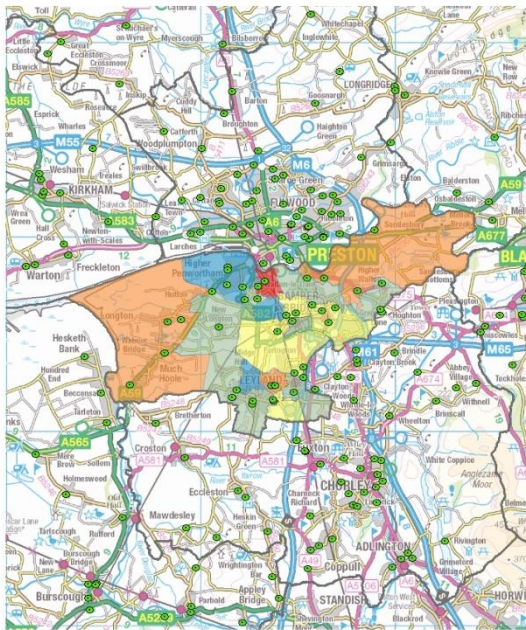
Prevalence of overweight and obesity in year six by ward, 2010/11
 % prevalence

- 8.3% - 25.0%
- 25.1% - 29.5%
- 29.6% - 33.3%
- 33.4% - 38.2%
- 38.3% - 60.0%

Produced by the Lancashire JSNA team, January 2012.

Data is divided into quintiles. In wards where fewer than 5 children were measured, the data have been suppressed.

South Ribble



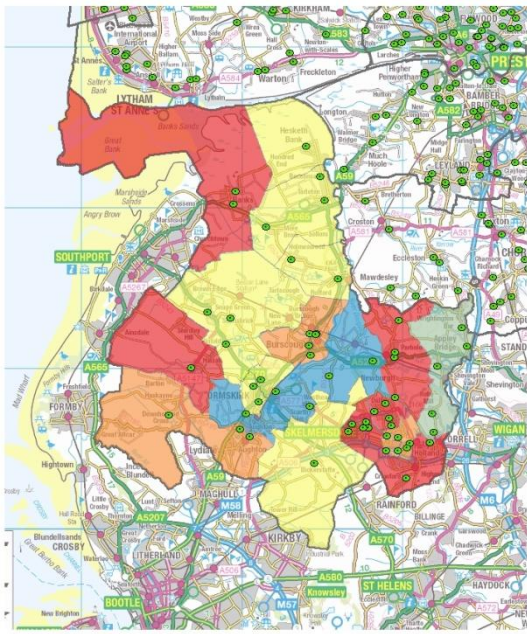
Prevalence of overweight and obesity in year six by ward, 2010/11
 % prevalence

- 8.3% - 25.0%
- 25.1% - 29.5%
- 29.6% - 33.3%
- 33.4% - 38.2%
- 38.3% - 60.0%

Produced by the Lancashire JSNA team, January 2012.

Data is divided into quintiles. In wards where fewer than 5 children were measured, the data have been suppressed.

West Lancashire



Prevalence of overweight and obesity in year six by ward, 2010/11
 % prevalence

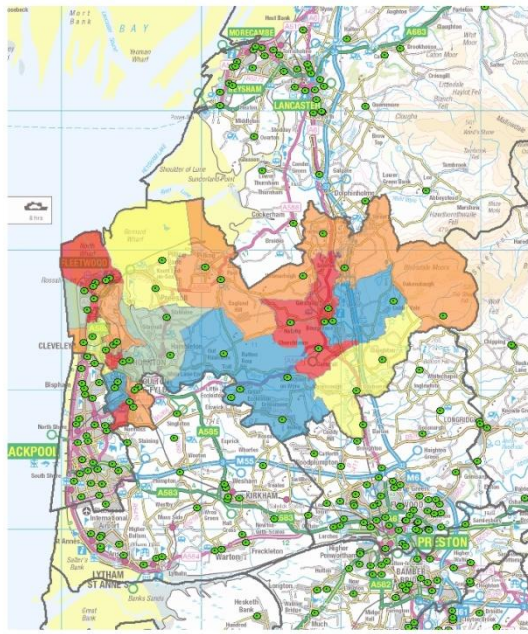
- 8.3% - 25.0%
- 25.1% - 29.5%
- 29.6% - 33.3%
- 33.4% - 38.2%
- 38.3% - 60.0%

● Primary school
 District

Produced by the Lancashire JSNA team, January 2012.

Data is divided into quintiles. In wards where fewer than 5 children were measured, the data have been suppressed.

Wyre



Prevalence of overweight and obesity in year six by ward, 2010/11
 % prevalence

- 8.3% - 25.0%
- 25.1% - 29.5%
- 29.6% - 33.3%
- 33.4% - 38.2%
- 38.3% - 60.0%

● Primary school
 District

Produced by the Lancashire JSNA team, January 2012.

Data is divided into quintiles. In wards where fewer than 5 children were measured, the data have been suppressed.