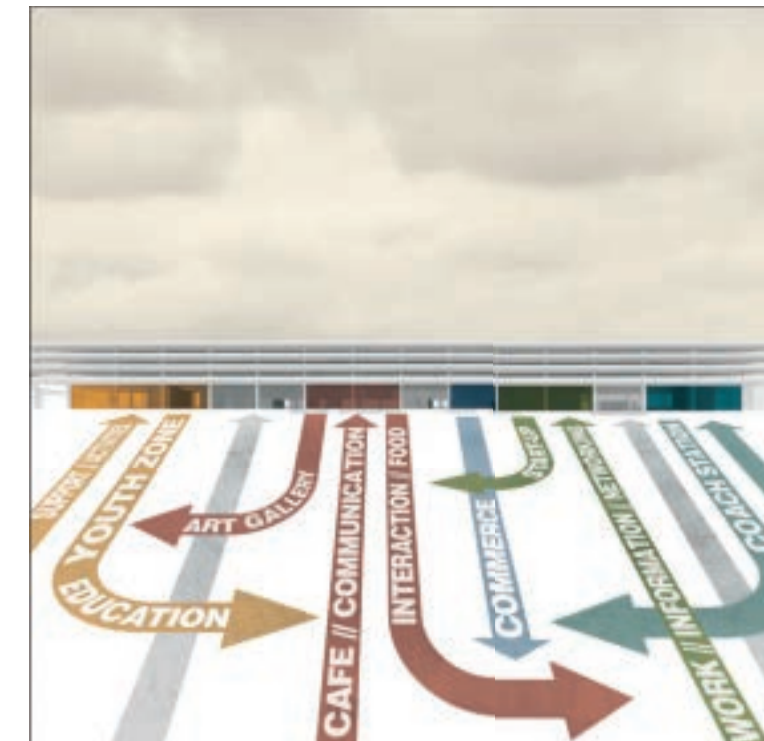
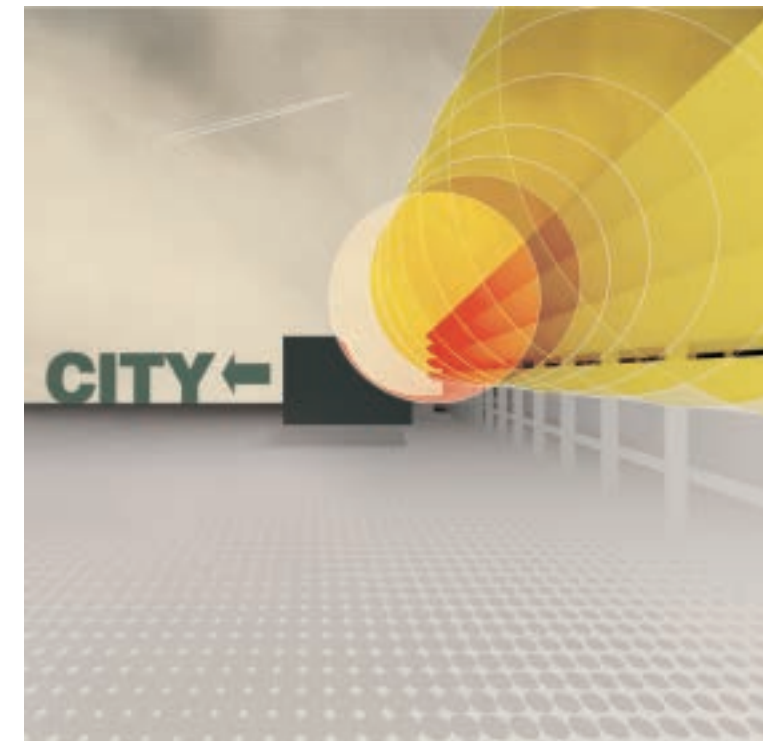


"Erase the Traces. Destroy, in order to create. Build a new world on the ruins of the old. This, it is often thought, is the Modernist imperative. So what would it mean, then, to look for the future's remnants? To uncover clues about those who wanted, as Walter Benjamin put it, to 'live without traces'? Can we, should we, try and excavate utopia?" O.H.

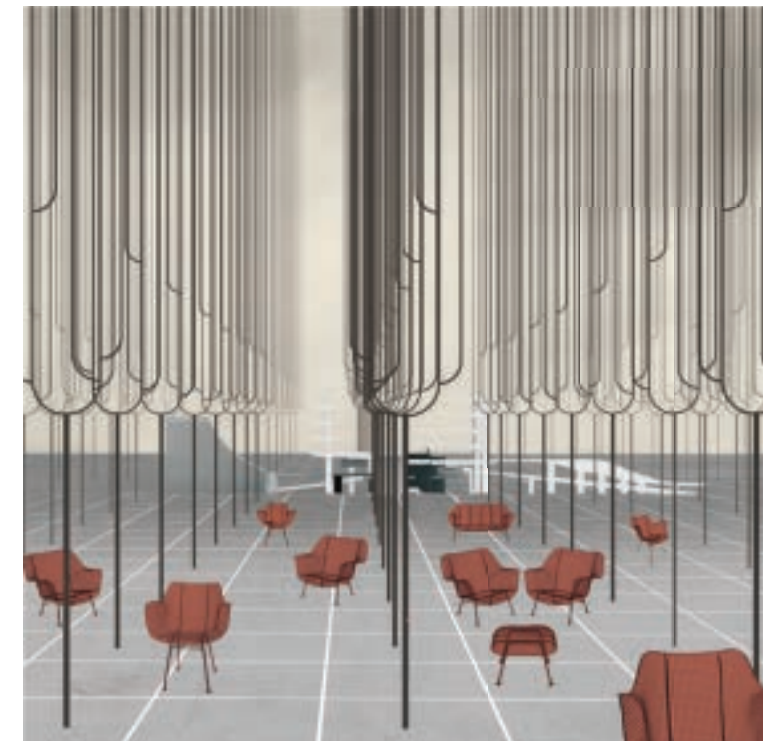


**THE BUS STATION:** functions as a transport hub, connecting Preston with the rest of the world. The gallery will function as an activity hub connecting Preston citizens with each other and with the city

It acts as a horizontal axis placed at the intersection of the city and the community various needs, generating a collection of alternative center points.



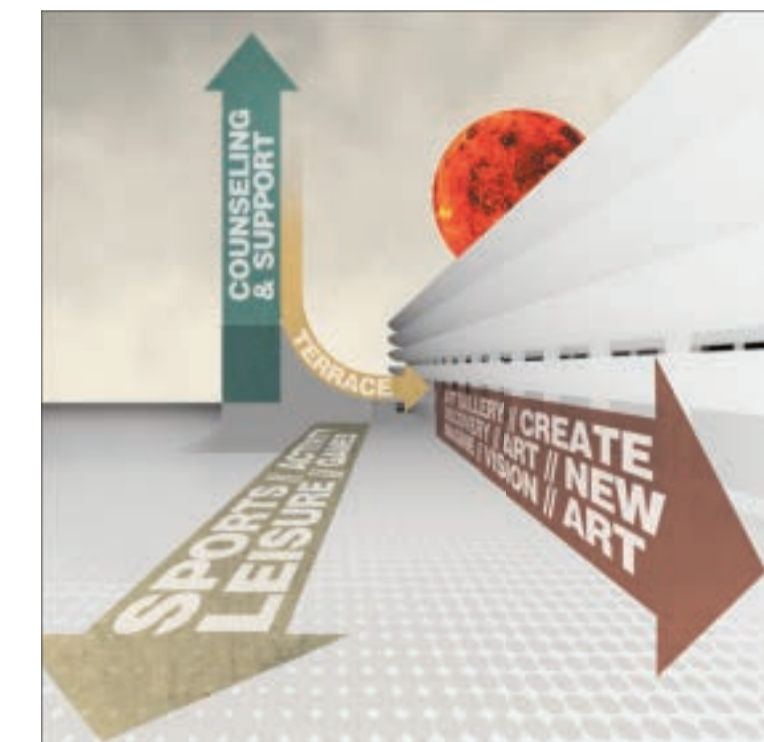
**PRESTON YOUTH ZONE:** A three floor height curved volume slides in the ground floor of the existing building at mezzanine level as a 500 sqm terrace. The curve of the slab is parallel with the curve of the facade panels as a spatial dialog between the existing building and the extension, while also opening towards the city.



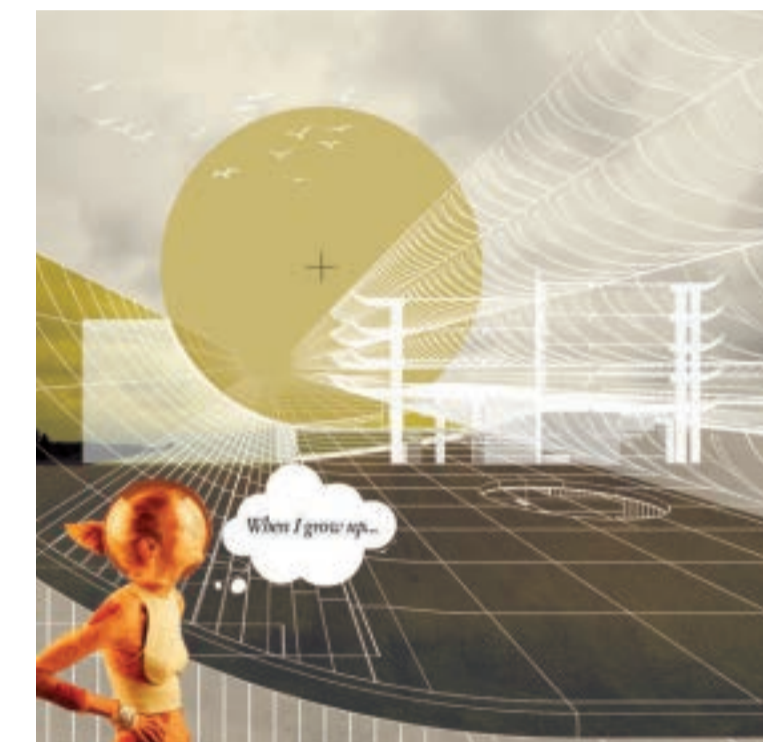
**THE PARK:** will be predominantly mineral borrowing from the history of the place as a former bus station. The green space is reduced to an elementary presence: a network of trees extending in the open space of the gallery that will function as a link between the interior and the exterior. 300 metal chairs can scatter freely in the park and in the bus station, offering the possibility of diverse typologies that create and dissolve freely because the users can move everywhere.



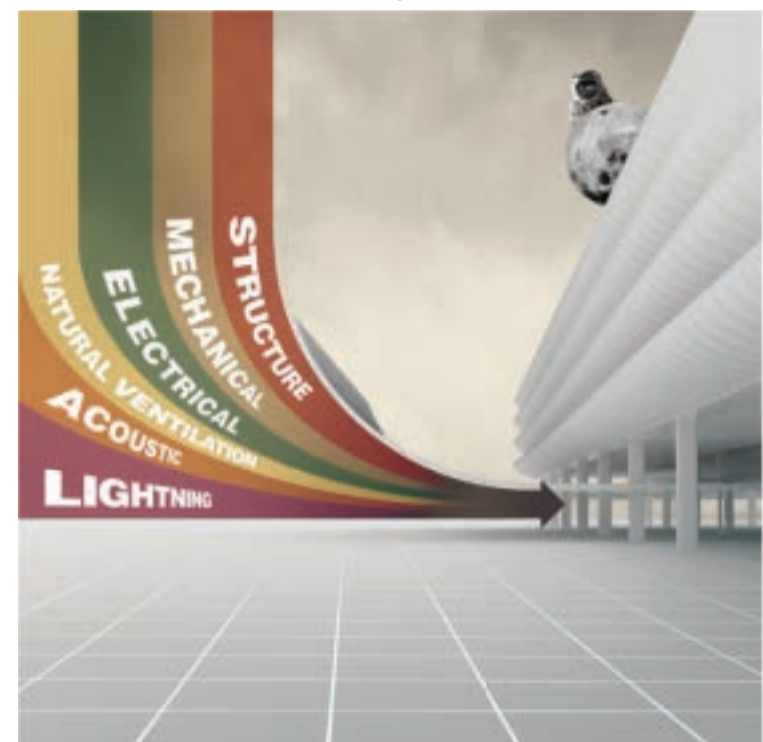
The Bus Station open space will combine various community oriented pop-up programs: an art gallery, a co-working space, virtual multimedia library, restaurants and stores etc. The cassette above the entries will be replaced with a led screens band that will run people's tweets and Facebook messages etc containing a particular hashtag - connecting the whole world with the Preston Bus Station



The youth center is organized in three axes. In the new building, a vertical counseling axis and a horizontal sports axis that extends outside with the exterior sports area. In the old building an arts axis that can extend in the gallery as an exhibition space. The axes intersect at ground floor level in the foyer and the recreation area



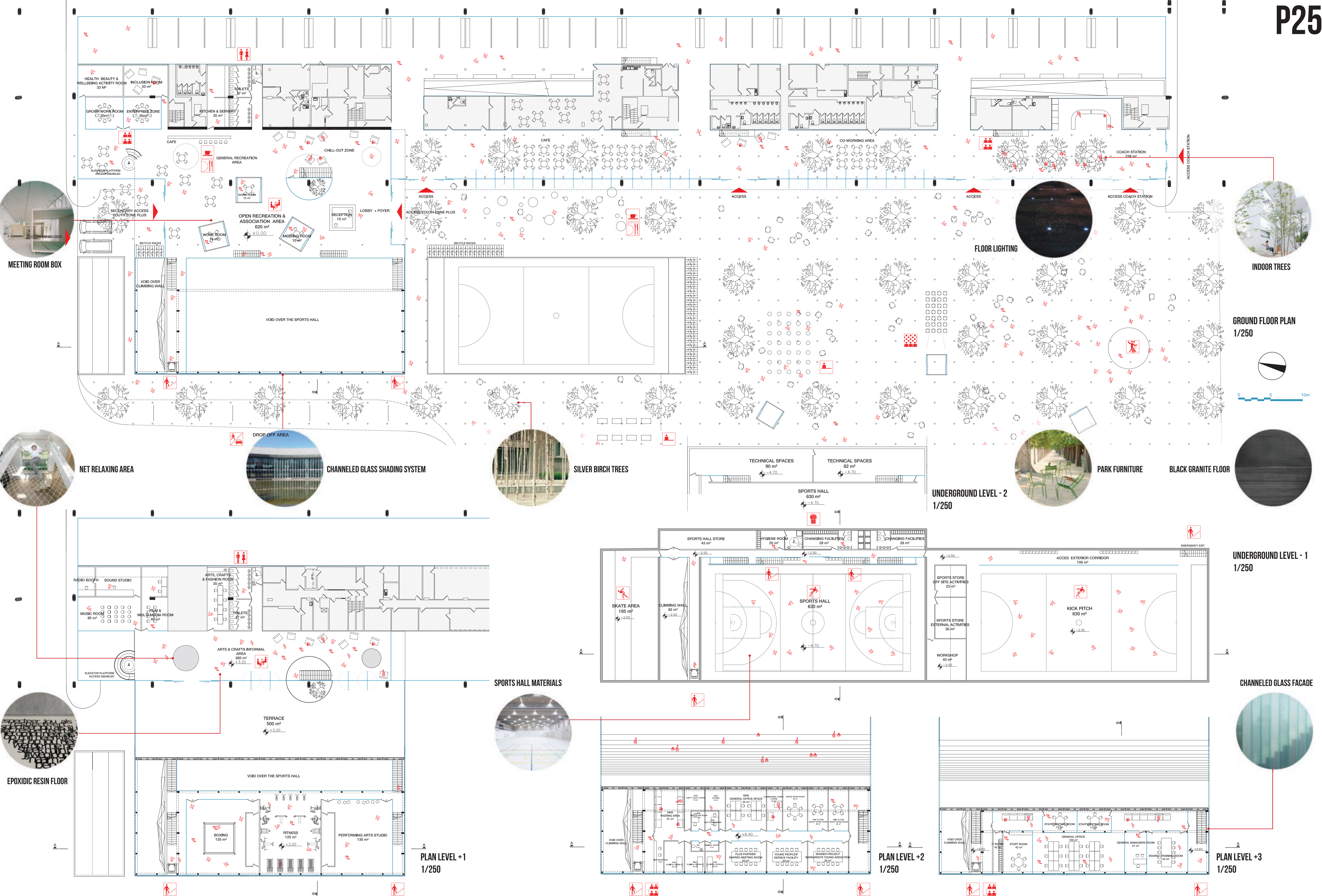
The curved slab creates at mezzanine level a terrace that can function as a protected exterior space for the Youth Zone connecting the old building and the extension at functional level as well as at formal level.



The curved slab is suspended on cables and functions as a central active core that distributes all the mechanical, acoustic and fluid systems of the building. The cable structure will shelter a flexible, wide open space for the main functions of the Youth Center



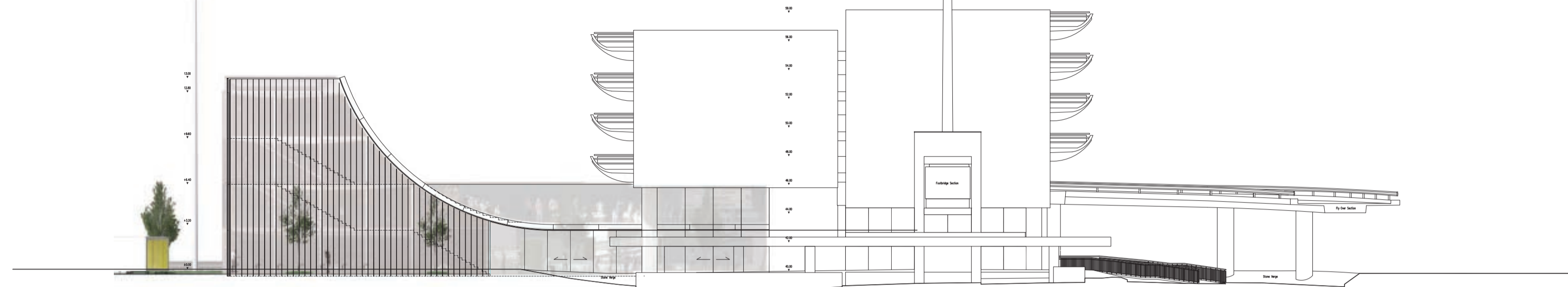
P R E S T O N B U S S T A T I O N C O M P E T I T I O N



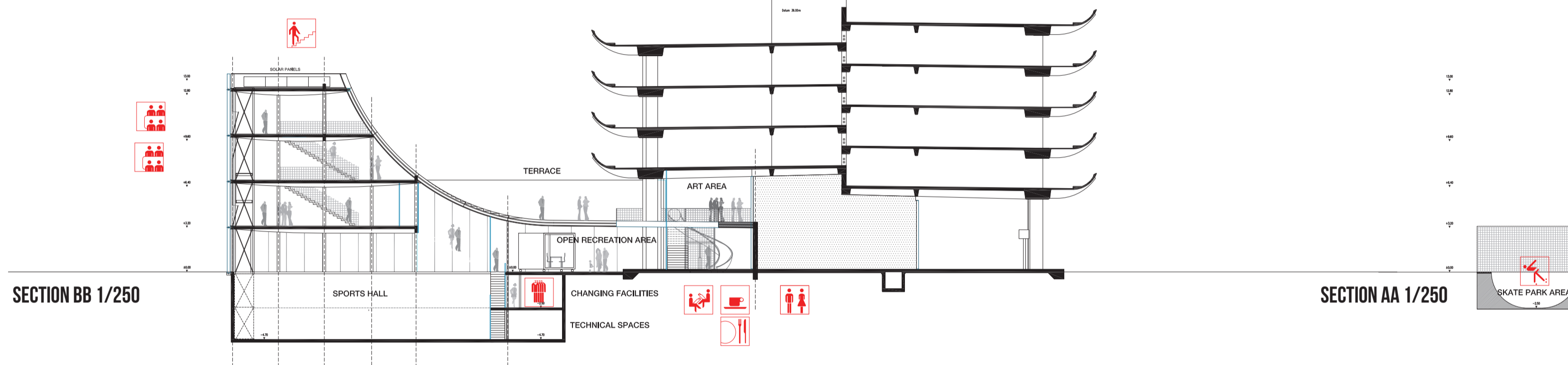
# P R E S T O N B U S S T A T I O N C O M P E T I T I O N



FACADE WEST 1/250



FACADE SOUTH 1/250



SECTION BB 1/250

SECTION AA 1/250



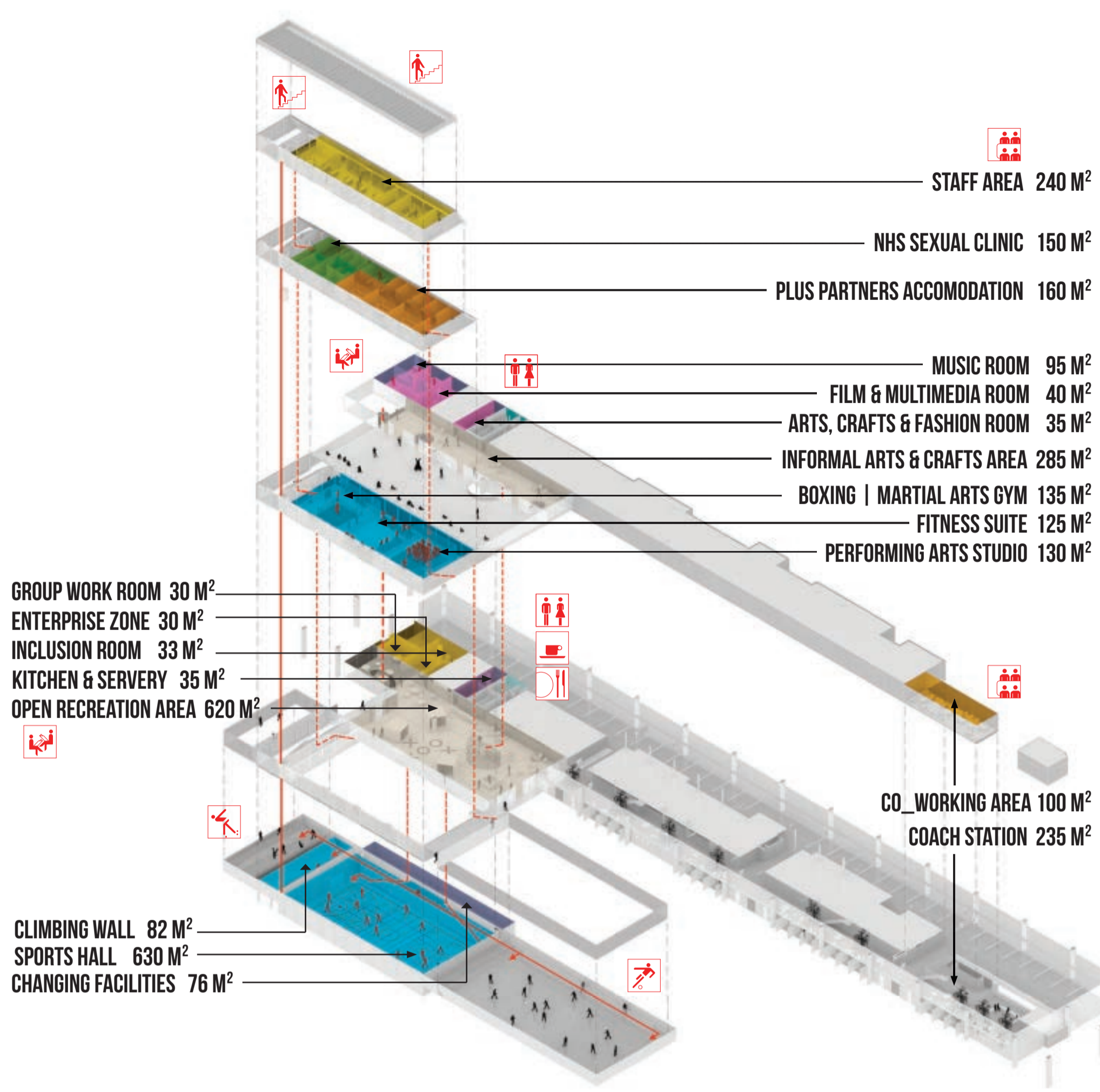
SITE SECTION 1/1000



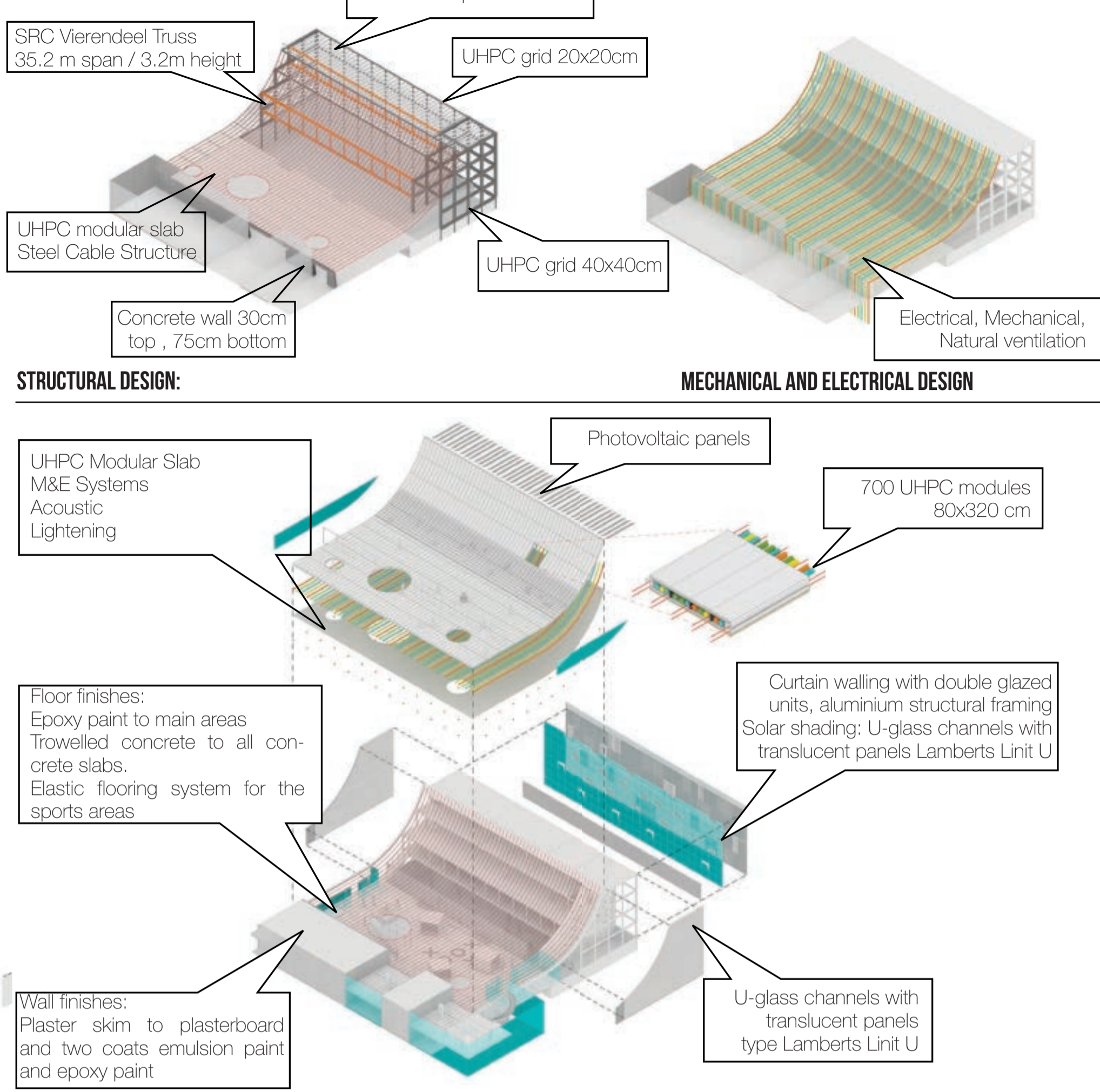
SITE SECTION 1/1000



FUNCTIONAL SCENARIO



TECHNICAL SCENARIO



LANDSCAPE

