

Westinghouse Opportunities in the UK



*Presented by David Mills,
Westinghouse UK*

15th September 2010



Outline

- UK Update
- The Westinghouse AP1000
- Westinghouse in the UK

Major utilities are already investing in the UK



EdF acquired British Energy for £12.5bn and plans to build 4 reactors with Centrica at Hinkley and Sizewell.



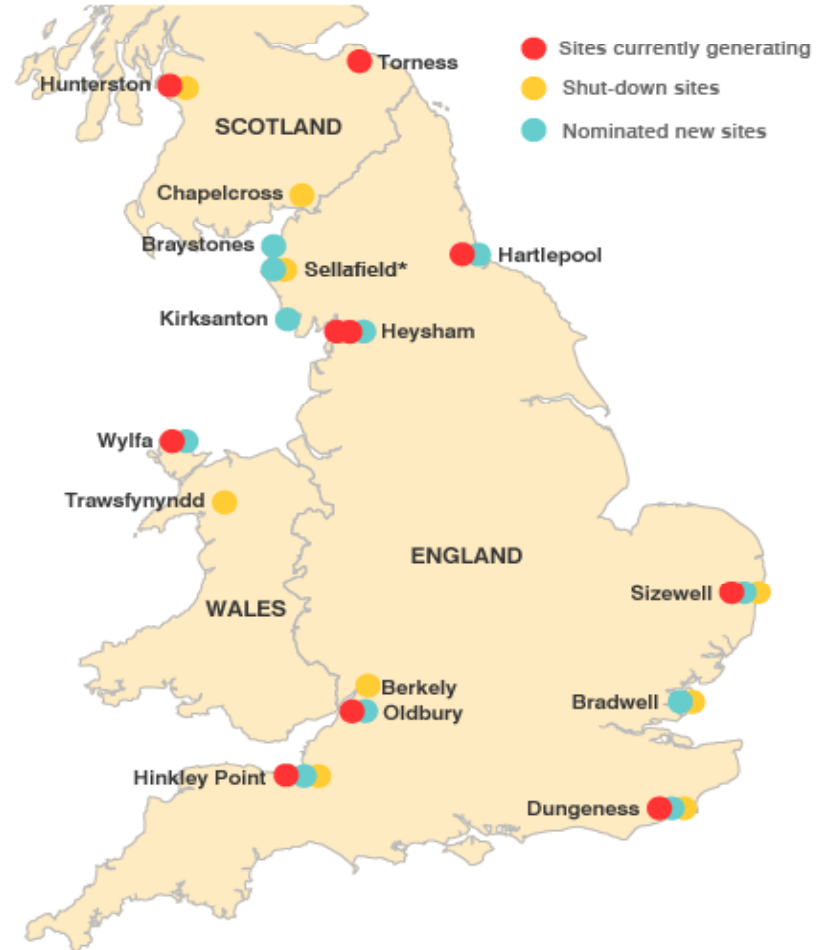
Horizon intends to build 6 GWe nuclear by 2025 and has acquired land at Wylfa and Oldbury.



Iberdrola/GDF Suez/Scottish and Southern intends to build 3 GWe nuclear and has acquired land at Sellafield



NOMINATED SITES FOR NEW NUCLEAR POWER STATIONS

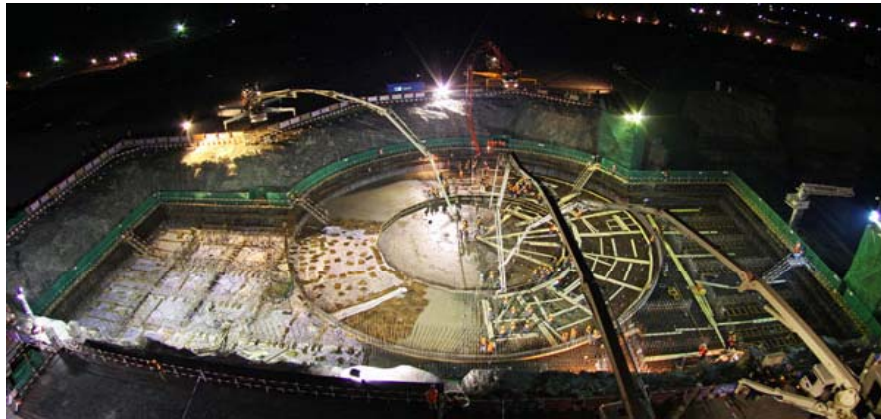


*Shut-down site known as Calder Hall

SOURCE: DECC



The first four AP1000s are under construction in China - providing a valuable experience base



Sanmen Unit #1 - Commercial Operation 2013
Four units operational by 2015



Westinghouse Plans for Business in the UK



- Purchased the Springfields business on 1 April 2010 as a platform for growth.
- Will diversify to produce PWR fuel, with the option for Recycled Uranium.
- Significant capital investment will be needed.

•Westinghouse forms Nuclear Power Delivery UK a consortium with Shaw, Laing O'Rourke and Toshiba to build AP1000's in the UK.

The AP1000 and Springfields provide UK opportunities for the Supply Chain

- Westinghouse believes that in excess of 70% of the construction value can be supplied locally
- Ongoing fuel and services support to AP1000s in the UK can be supplied locally
- The key challenges are in terms of meeting the quality requirements for nuclear components.
- Springfields and Nuclear Power Deliver UK have run supplier days in the last few months.

Springfields Supplier Day – June 2010

- Around 40 exhibiting companies
- Over 300 visitors to the exhibition



Nuclear Power Delivery UK Supplier Event – Manchester, June 2010

- Around 300 attendees
- Around 170 companies
- Keynote presentations from
OND and Horizon Nuclear Power



Impact on the North West – Potential Jobs?

- 2300 UK companies involved in Sizewell build
- At peak more than 5000 people employed
- Large % from North-West

Source: Nuclear Industry Association

